

njtruckking.com
856-693-3181
1229 Broadway
Westville, New Jersey
08093

King of Cars and
Trucks

2000 Ford Excursion Limited

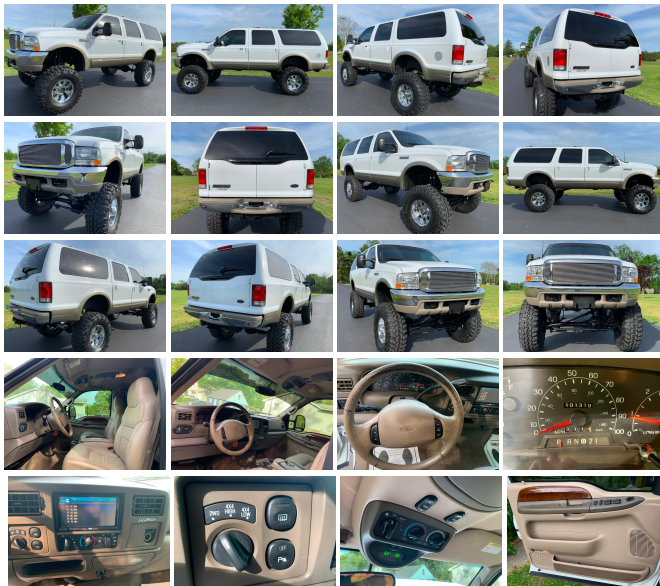
View this car on our website at njtruckking.com/6800152/ebrochure



Our Price **\$16,500**

Specifications:

Year: 2000
VIN: 1FMNU43S8YED97157
Make: Ford
Model/Trim: Excursion Limited
Condition: Pre-Owned
Body: SUV
Exterior: White
Engine: 6.8L (415) SOHC SEFI V10 ENGINE
Interior: Tan Leather
Mileage: 101,319
Drivetrain: 4 Wheel Drive



2000 FORD EXCURSION 4X4

~LIMITED~

6.8L V10

AUTOMATIC TRANSMISSION

CLEAN CARFAX

(ONLY 101,319 ORIGINAL / ACTUAL MILES)

ORIGINAL OWNERS MANUALS

ALL THE OPTIONS

REAR ENTERTAINMENT SYSTEM !

3RD ROW

REAR CLIMATE CONTROL & MORE

10 INCH LIFT

41 INCH IROK SUPER SWAMPERS

18 INCH EAGLE ALLOY RIMS

RUNS AND DRIVES EXCELLENT!

WILL NOT LAST LONG!

GETTING HARDER AND HARDER TO FIND!

DON'T SNOOZE AND LOSE!

\$16500

CALL/TEXT AARON FOR MORE INFO , 856-693-9370 !

2000 Ford Excursion Limited

King of Cars and Trucks - 856-693-3181 - View this car on our website at njtruckking.com/6800152/ebrochure

Our Location :



2000 Ford Excursion Limited

King of Cars and Trucks - 856-693-3181 - View this car on our website at njtruckking.com/6800152/ebrochure

Installed Options

Interior

- Leather front captains chairs-inc: 6-way pwr driver seat
- Overhead console-inc: trip computer, pwr rear quarter window controls
- Premium electronic AM/FM stereo w/compact disc/cassette-inc: 80-watt amp
- Pwr door locks- Pwr windows w/driver one-touch-down
- Remote keyless entry-inc: 2-transmitters, door keypad- (10) cup holders
- (5) auxiliary pwr points- 1st/2nd color-keyed carpeted floor mats- Cargo net
- Cigarette lighter- Color-keyed 12 oz carpet- Color-keyed instrument panel
- Color-keyed sun visors-inc: illuminated vanity mirrors, secondary sun blade
- Dual coat hooks in cargo area- Dual coat hooks over 2nd row doors
- Electrochromatic rear view mirror- Floor console w/storage bin- Front/rear assist handles
- Glove box
- Instrumentation-inc: tachometer, trip odometer, voltmeter, oil pressure/ coolant temp/fuel gauges
- Leather 2nd row reclining 60/40 split bench seat-inc: dual tip/slide feature center armrests, cup holders
- Leather 3rd row 3-passenger removable fold-flat bench seat w/rollers
- Leather steering wheel
- Lights-inc: underhood, glove box, front dome/map, front door courtesy, overhead rear cargo, 2nd/3rd row map lights
- Manual front/rear air conditioning- Molded cloth headliner
- Molded door trim panel-inc: soft armrest, upper woodgrain insert, dual map pockets, lower carpet
- Passive anti-theft system- Rear floor heat ducts- Rear seat audio controls
- Rear window defroster- Speed control- Tilt steering column

Exterior

- Black pwr heated mirrors- Pwr rear quarter windows
- Rear window intermittent wiper w/washer- Speed-sensitive intermittent windshield wipers
- "Blocker Beam" front bumper supplement- Aero halogen headlights- Aero grille

Option Packages

Factory Installed Packages

6.8L (415) SOHC SEFI V10 ENGINE

- Beige body-side/wheel lip moldings- Beige rear step bumper- Body-side paint stripe
- Chrome front bumper- Color-keyed door handles- Illuminated beige running boards
- Luggage rack- Privacy glass- Reverse sensing system
- Tri-panel rear door-inc: top half liftgate, 2 lower swing-out cargo doors

Safety

- Leather front captains chairs-inc: 6-way pwr driver seat
- Overhead console-inc: trip computer, pwr rear quarter window controls
- Premium electronic AM/FM stereo w/compact disc/cassette-inc: 80-watt amp
- Pwr door locks- Pwr windows w/driver one-touch-down
- Remote keyless entry-inc: 2-transmitters, door keypad- (10) cup holders
- (5) auxiliary pwr points- 1st/2nd color-keyed carpeted floor mats- Cargo net
- Cigarette lighter- Color-keyed 12 oz carpet- Color-keyed instrument panel
- Color-keyed sun visors-inc: illuminated vanity mirrors, secondary sun blade
- Dual coat hooks in cargo area- Dual coat hooks over 2nd row doors
- Electrochromatic rear view mirror- Floor console w/storage bin- Front/rear assist handles
- Glove box
- Instrumentation-inc: tachometer, trip odometer, voltmeter, oil pressure/ coolant temp/fuel gauges
- Leather 2nd row reclining 60/40 split bench seat-inc: dual tip/slide feature center armrests, cup holders
- Leather 3rd row 3-passenger removable fold-flat bench seat w/rollers
- Leather steering wheel
- Lights-inc: underhood, glove box, front dome/map, front door courtesy, overhead rear cargo, 2nd/3rd row map lights
- Manual front/rear air conditioning- Molded cloth headliner
- Molded door trim panel-inc: soft armrest, upper woodgrain insert, dual map pockets, lower carpet
- Passive anti-theft system- Rear floor heat ducts- Rear seat audio controls
- Rear window defroster- Speed control- Tilt steering column

Mechanical

- (5) LT265/75R16D all-season SBR OWL tires
- 4-speed electronically-controlled automatic transmission w/OD
- 4-wheel anti-lock braking system- Full size spare tire- (2) front tow hooks
- (4) 16" x 7.0" 5-hole styled aluminum wheels - 130 amp alternator
- 2-speed transfer case w/Control Trac Shift-on-the-Fly- 3.73 axle ratio- 44 gallon fuel tank
- 6.8L (415) SOHC SEFI V10 engine - 78 amp/hr (750 CCA) battery
- 8,900# GVWR (3800 front/5240 rear), springs (3800 front/5240 rear), axles (5200 front/7000 rear)
- Battery saver- Class IV trailer towing pkg-inc: 7-wire harness, trailer brake wiring kit
- Four wheel drive- Front stabilizer bar- Pwr 4-wheel disc brakes- Pwr steering

King of Cars and Trucks

njtruckking.com

856-693-3181

1229 Broadway

Westville, New Jersey 08093

© 2024 AutoRevo - All rights reserved. - Powered by AutoRevo