



2015 Scion FR-S Release Series 1.0

Website Price \$19,995

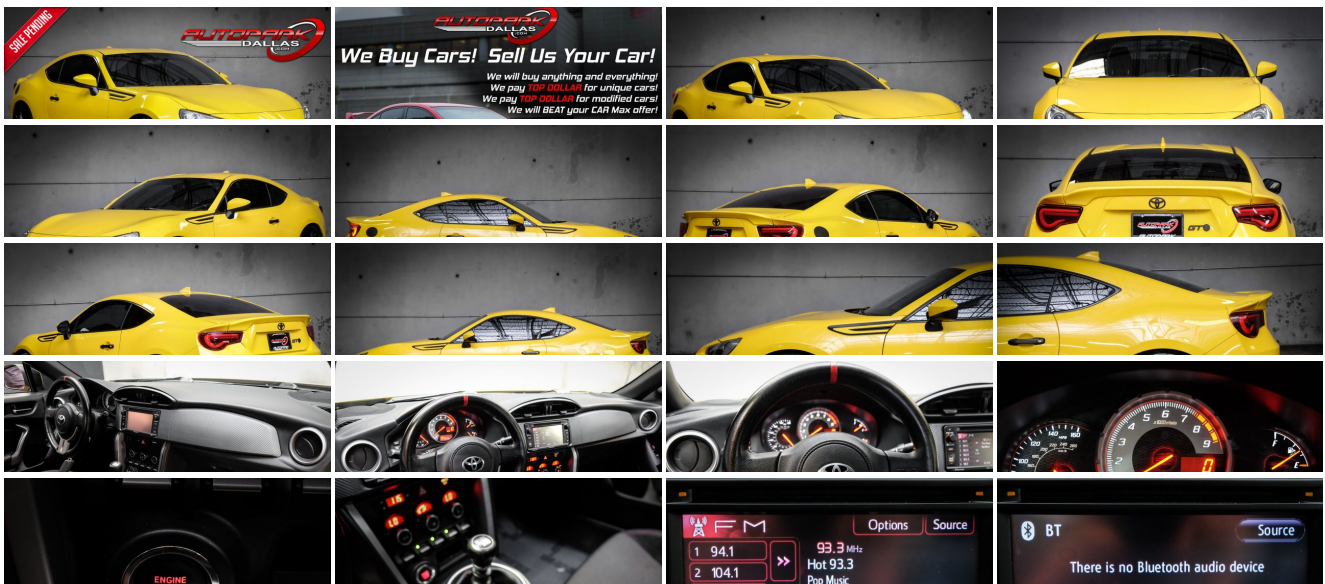
View this vehicle on our website at autoparkdallas.com



(214) 945-2601

2061 S Stemmons Fwy , Lewisville, TX 75067

- Photos
- Details
- Contact



Specifications:

Year:	2015
VIN:	JF1ZNAA17F9705278
Make:	Scion
Model/Trim:	FR-S Release Series 1.0
Condition:	Pre-Owned
Body:	Coupe
Exterior:	Yuzu
Engine:	Engine: 2.0L H-4 DOHC D-4S Injection
Interior:	Black Cloth
Transmission:	Transmission: 6-Speed Manual
Mileage:	67,121
Drivetrain:	Rear Wheel Drive
Economy:	City 22 / Highway 30

Vehicle Description

AutoPark Dallas is thrilled to offer you this RARE #392 of 1,500 2015 Scion FR-S Release Series 1.0 for sale! Just one corner, one gear change, and one glance at the exclusive Yuzu Yellow Exterior will immediately make you say "Wow" with a smile with this FR-S! Some may think that the Yuzu Yellow is all this FR-S has to offer to separate it from just a regular FR-S or BRZ, but that isn't the case at all with this Scion! The Release Series TRD quad-tip exhaust supplies a louder note than a regular FR-S, the Aero kit is relative to a TRD concept car that gives a unique exterior look with extra aerodynamics, and lowering springs that give a lower stance plus a whole different performance feel! Kick it back to the fact that ONLY 1,500 of these Release Series were made, just solidifies the fact that you have to check out this Scion parked parked in our indoor 16,000 Sq Ft Showroom located in Dallas , Texas amongst our inventory of 100+ other Performance / Modified and Luxury cars! BEFORE ITS TO LATE!!!

2015 Scion FR-S Release Series 1.0

* #392 of 1500 Made !*

Yuzu Yellow Exterior

(Exterior Color Exclusive Only to Release Series)

Black Cloth Interior

Hands Free Bluetooth

Navigation w/ Voice Command

Push Button Start

Comfort Access Keyless Entry

VSC 'Sport' Mode

Cruise Control

Daytime Running Lights

Dual Climate Controls

CD / AUX / USB Capable

Sport Tuned Suspension

TRD Quasi-Dual Stainless Steel Exhaust

2.0L H-4 DOHC D-4S Injection Engine

6-Speed Manual Transmission

Rear Wheel Drive

Professionally Detailed!

Well Maintained!

* Free CarFax Report !*

AND SO MUCH MORE!!!

Financing is available!

Check out our Payment Calculator to get an estimate on your monthly payments!

OR

Get pre-approved in no time by filling out a credit application on the 'Finance' section of our website!

We also offer MANY different Extended Warranty options!

Check out our Google Reviews by *Clicking* this LINK!

Referrals and Testimonials is what our business is built on!

The team here at AutoPark Dallas, is dedicated to offering a level of customer service not usually found in the automobile industry. Thanks to years of extensive car buying / selling experience, we pursue quality used and new vehicles that are hand-picked from factory sources. Our love for automobiles and dislike of traditional dealership tactics is what motivates us to provide the service we do! The pride we take in continuing this service long after the vehicle has been delivered is what we strive for! Looking forward to making every effort to see that our customer is completely satisfied and a friend for life!

Pre-purchase inspections are always welcomed!

We also offer airport pick-up, competitive financing options, free CarFax Reports, Car Shipping nationwide, Extended Warranty plans, and so much more!

Trade-In(s) are always accepted or sell us your used car (MODIFIED OR NOT)! Please call or text for more information about Trade-Ins or selling your car to us @ (214) 945-2601!

#(214) 945-2601

Call or Text **Anytime!**

Se habla Español

WE BUY CARS!

WWW.AUTOPARKDALLAS.COM

Installed Options

Interior

- 1 Seatback Storage Pocket- 2 12V DC Power Outlets
- 4-Way Passenger Seat -inc: Manual Rear Seat Easy Entry - 6-Way Driver Seat
- Air Filtration- Analog Display- Cargo Area Concealed Storage- Cargo Space Lights
- Carpet Floor Trim and Carpet Mat - Cruise Control w/Steering Wheel Controls
- Day-Night Rearview Mirror- Delay Off Interior Lighting- Delayed Accessory Power
- Driver And Passenger Visor Vanity Mirrors - Driver Foot Rest
- Dual Zone Front Automatic Air Conditioning- Engine Immobilizer
- Fabric Upholstery w/T-Pattern- Fixed Rear Windows

Option Packages

Factory Installed Packages

RADIO: BESPOKE PREMIUM AUDIO
\$1,199

50 STATE EMISSIONS

STANDARD PAINT

- Front Bucket Seats -inc: 6-way driver seat and 4-way front-passenger seat w/integrated headrests
- Front Cupholder- Front Map Lights
- Full Carpet Floor Covering -inc: Carpet Front And Rear Floor Mats - Full Cloth Headliner
- Full Floor Console w/Storage and 2 12V DC Power Outlets
- Full Folding Bench Front Facing Fold Forward Seatback Rear Seat
- Gauges -inc: Speedometer, Odometer, Engine Coolant Temp, Tachometer, Trip Odometer and Trip Computer
- Glove Box- Instrument Panel Bin, Driver And Passenger Door Bins
- Interior Trim -inc: Simulated Carbon Fiber Instrument Panel Insert, Metal-Look Door Panel Insert, Metal-Look Console Insert and Metal-Look Interior Accents
- Leather/Aluminum Gear Shift Knob- Leatherette Door Trim Insert
- Manual Adjustable Front Head Restraints and Fixed Rear Head Restraints
- Manual Tilt/Telescoping Steering Column- Outside Temp Gauge
- Power 1st Row Windows w/Driver And Passenger 1-Touch Up/Down
- Power Door Locks- Proximity Key For Doors And Push Button Start
- Redundant Digital Speedometer
- Remote Keyless Entry w/Integrated Key Transmitter, Illuminated Entry, Illuminated Ignition Switch and Panic Button
- Remote Releases -Inc: Power Cargo Access and Mechanical Fuel
- Seats w/Cloth Back Material- Sport Leather/Metal-Look Steering Wheel- Trip Computer
- Valet Function

Exterior

- Tires: P215/45R17 87W Michelin Primacy HP Summer- Black Grille
- Black Side Windows Trim- Body-Colored Door Handles- Body-Colored Front Bumper
- Body-Colored Power Side Mirrors w/Manual Folding
- Body-Colored Rear Bumper w/Black Rub Strip/Fascia Accent- Clearcoat Paint
- Compact Spare Tire Mounted Inside Under Cargo- Fixed Rear Window w/Defroster
- Fully Automatic Projector Beam High Intensity Low/High Beam Daytime Running Headlamps w/Delay-Off
- Galvanized Steel/Aluminum Panels- LED Brakelights- Light Tinted Glass- Lip Spoiler
- Rocker Panel Extensions- Steel Spare Wheel
- Tailgate/Rear Door Lock Included w/Power Door Locks- Trunk Rear Cargo Access
- Variable Intermittent Wipers- Wheels: 17" x 7" Alloy

Safety

- 1 Seatback Storage Pocket- 2 12V DC Power Outlets
- 4-Way Passenger Seat -inc: Manual Rear Seat Easy Entry - 6-Way Driver Seat
- Air Filtration- Analog Display- Cargo Area Concealed Storage- Cargo Space Lights
- Carpet Floor Trim and Carpet Mat- Cruise Control w/Steering Wheel Controls
- Day-Night Rearview Mirror- Delay Off Interior Lighting- Delayed Accessory Power
- Driver And Passenger Visor Vanity Mirrors- Driver Foot Rest
- Dual Zone Front Automatic Air Conditioning- Engine Immobilizer
- Fabric Upholstery w/T-Pattern- Fixed Rear Windows
- Front Bucket Seats -inc: 6-way driver seat and 4-way front-passenger seat w/integrated headrests
- Front Cupholder- Front Map Lights
- Full Carpet Floor Covering -inc: Carpet Front And Rear Floor Mats - Full Cloth Headliner
- Full Floor Console w/Storage and 2 12V DC Power Outlets
- Full Folding Bench Front Facing Fold Forward Seatback Rear Seat
- Gauges -inc: Speedometer, Odometer, Engine Coolant Temp, Tachometer, Trip Odometer and Trip Computer
- Glove Box- Instrument Panel Bin, Driver And Passenger Door Bins
- Interior Trim -inc: Simulated Carbon Fiber Instrument Panel Insert, Metal-Look Door Panel Insert, Metal-Look Console Insert and Metal-Look Interior Accents
- Leather/Aluminum Gear Shift Knob- Leatherette Door Trim Insert
- Manual Adjustable Front Head Restraints and Fixed Rear Head Restraints
- Manual Tilt/Telescoping Steering Column- Outside Temp Gauge
- Power 1st Row Windows w/Driver And Passenger 1-Touch Up/Down
- Power Door Locks- Proximity Key For Doors And Push Button Start
- Redundant Digital Speedometer
- Remote Keyless Entry w/Integrated Key Transmitter, Illuminated Entry, Illuminated Ignition Switch and Panic Button
- Remote Releases -Inc: Power Cargo Access and Mechanical Fuel
- Seats w/Cloth Back Material- Sport Leather/Metal-Look Steering Wheel- Trip Computer
- Valet Function

Mechanical

- 13.2 Gal. Fuel Tank- 130 Amp Alternator
- 4-Wheel Disc Brakes w/4-Wheel ABS, Front And Rear Vented Discs and Brake Assist
- 4.10 Axle Ratio- 48-Amp/Hr 390CCA Maintenance-Free Battery

YUZU

BLACK, FABRIC UPHOLSTERY W/T-PATTERN

Option Packages Total

\$1,199

- Double Wishbone Rear Suspension w/Coil Springs- Electric Power-Assist Steering
- Engine: 2.0L H-4 DOHC D-4S Injection- Front And Rear Anti-Roll Bars
- Gas-Pressurized Shock Absorbers- Mechanical Limited Slip Differential
- Quasi-Dual Stainless Steel Exhaust w/Chrome Tailpipe Finisher- Rear-Wheel Drive
- Sport Tuned Suspension- Strut Front Suspension w/Coil Springs
- Transmission: 6-Speed Manual

AUTOPARK

Dallas

Auto Park Dallas

View this car on our website at autoparkdallas.com/6798303

Website: autoparkdallas.com

Phone: (214) 945-2601

Map: 2061 S Stemmons Fwy, Lewisville, TX 75067

