



## 2016 NISSAN SENTRA SV 73K MLS 1-OWNER BACK-UP CAMERA SERVICE RECORDS NEW TIRES

Contact Sales 310-987-1212

**Our Price \$7,590**

**Retail Value \$9,820**

View this vehicle on our website at [boutiqueautosales.com](http://boutiqueautosales.com)

Boutique Auto Sales

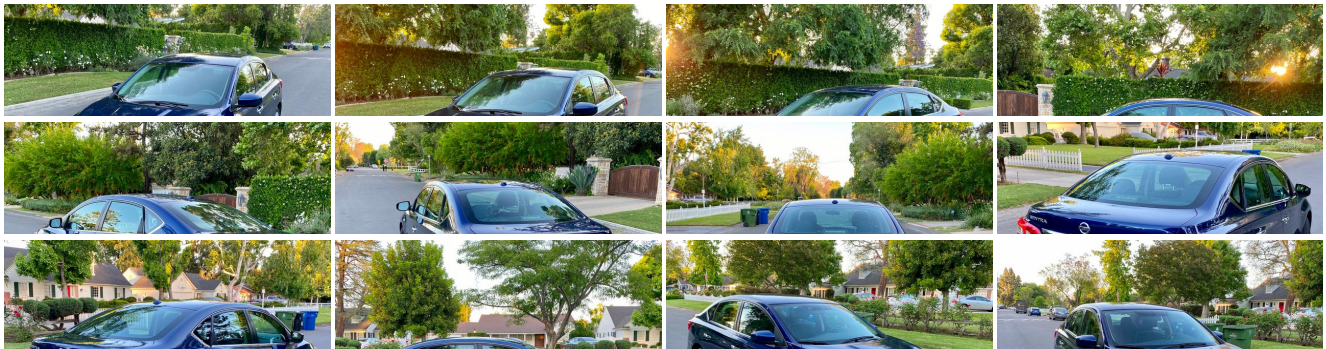
[310-987-1212](tel:310-987-1212)

5950 Laurel Canyon Blvd, North Hollywood, CA 91607

Photos

Details

Contact





## Specifications:

<b>Year:</b>	2016
<b>VIN:</b>	<a href="#">3N1AB7AP1GL659868</a>
<b>Make:</b>	NISSAN
<b>Stock:</b>	9868
<b>Model/Trim:</b>	SENTRA SV 73K MLS 1-OWNER BACK-UP CAMERA SERVICE RECORDS NEW TIRES
<b>Condition:</b>	Pre-Owned
<b>Body:</b>	Sedan
<b>Exterior:</b>	Deep Blue Pearl
<b>Engine:</b>	Engine: 1.8L DOHC 16-Valve 4-Cylinder
<b>Interior:</b>	Marble Gray Cloth
<b>Mileage:</b>	73,165
<b>Drivetrain:</b>	Front Wheel Drive
<b>Economy:</b>	City 29 / Highway 38

## Vehicle Description

### Installed Options

#### Interior

- 1 12V DC Power Outlet- 1 Seatback Storage Pocket
- 4-Way Passenger Seat -inc: Manual Recline and Fore/Aft Movement
- 60-40 Folding Split-Bench Front Facing Fold Forward Seatback Rear Seat - Air Filtration
- Analog Display- Cargo Space Lights
- Carpet Floor Trim and Carpet Trunk Lid/Rear Cargo Door Trim - Cloth Door Trim Insert
- Cruise Control w/Steering Wheel Controls- Day-Night Rearview Mirror
- Delayed Accessory Power
- Driver And Passenger Visor Vanity Mirrors w/Driver And Passenger Auxiliary Mirror
- Driver Foot Rest- Driver Seat- Engine Immobilizer
- FOB Controls -inc: Trunk/Hatch/Tailgate- Fade-To-Off Interior Lighting
- Front Bucket Seats -inc: 6-way adjustable driver's seat - Front Cupholder
- Front Map Lights- Full Carpet Floor Covering- Full Cloth Headliner
- Full Floor Console w/Covered Storage, Mini Overhead Console w/Storage and 1 12V DC Power Outlet
- Gauges -inc: Speedometer, Odometer, Engine Coolant Temp, Tachometer, Trip Odometer and Trip Computer
- Glove Box- Instrument Panel Covered Bin, Driver / Passenger And Rear Door Bins
- Interior Trim -inc: Piano Black Instrument Panel Insert, Piano Black Door Panel Insert, Piano Black Console Insert and Chrome/Metal-Look Interior Accents
- Leather/Metal-Look Steering Wheel
- Manual Adjustable Front Head Restraints and Manual Adjustable Rear Head Restraints
- Manual Air Conditioning- Manual Tilt/Telescoping Steering Column
- NissanConnect Selective Service Internet Access- Outside Temp Gauge
- Perimeter Alarm- Power 1st Row Windows w/Driver 1-Touch Up/Down
- Power Door Locks w/Autolock Feature- Power Rear Windows
- Premium Cloth Seat Trim- Proximity Key For Doors And Push Button Start
- Rear Cupholder
- Remote Keyless Entry w/Integrated Key Transmitter, Illuminated Entry, Illuminated Ignition Switch and Panic Button
- Remote Releases -Inc: Power Cargo Access and Mechanical Fuel
- Seats w/Cloth Back Material- Sliding Front Center Armrest and Rear Center Armrest

### Option Packages

#### Factory Installed Packages

WHEELS: 16" ALUMINUM ALLOY

#### [K01] STYLE PACKAGE

-inc: Power Sliding Glass Moonroof w/Tilt Feature, Wheels: 16" Aluminum Alloy, Center Room Dim Lamp (LED), Dual Illuminated Visor Vanity Mirrors

\$750

#### [U01] DRIVER'S ASSIST PACKAGE

-inc: NissanConnect w/Navigation & Mobile Apps, 5.8" color touch-screen monitor, Nissan voice recognition for audio and navigation, SiriusXM Traffic and Travel Link (fuel prices, weather, movie listings and stock info), Blind Spot Warning (BSW) and Rear Cross Traffic Alert (RCTA)

\$1,020

DEEP BLUE PEARL

Option Packages Total

\$1,770

- Trip Computer- Urethane Gear Shift Knob- Valet Function

---

## Exterior

- Body-Colored Front Bumper- Body-Colored Power Side Mirrors w/Manual Folding
- Body-Colored Rear Bumper- Chrome Door Handles- Chrome Grille
- Chrome Side Windows Trim and Black Front Windshield Trim - Clearcoat Paint
- Compact Spare Tire Mounted Inside Under Cargo- Fixed Rear Window w/Defroster
- Fully Automatic Aero-Composite Halogen Headlamps w/Delay-Off
- Fully Galvanized Steel Panels- Light Tinted Glass- Steel Spare Wheel
- Tires: P205/55HR16 AS- Trunk Rear Cargo Access- Variable Intermittent Wipers
- Wheels: 16" Steel w/Full Wheel Covers

---

## Safety

- 1 12V DC Power Outlet- 1 Seatback Storage Pocket
- 4-Way Passenger Seat -inc: Manual Recline and Fore/Aft Movement
- 60-40 Folding Split-Bench Front Facing Fold Forward Seatback Rear Seat - Air Filtration
- Analog Display- Cargo Space Lights
- Carpet Floor Trim and Carpet Trunk Lid/Rear Cargo Door Trim - Cloth Door Trim Insert
- Cruise Control w/Steering Wheel Controls- Day-Night Rearview Mirror
- Delayed Accessory Power
- Driver And Passenger Visor Vanity Mirrors w/Driver And Passenger Auxiliary Mirror
- Driver Foot Rest- Driver Seat- Engine Immobilizer
- FOB Controls -inc: Trunk/Hatch/Tailgate- Fade-To-Off Interior Lighting
- Front Bucket Seats -inc: 6-way adjustable driver's seat - Front Cupholder
- Front Map Lights- Full Carpet Floor Covering- Full Cloth Headliner
- Full Floor Console w/Covered Storage, Mini Overhead Console w/Storage and 1 12V DC Power Outlet
- Gauges -inc: Speedometer, Odometer, Engine Coolant Temp, Tachometer, Trip Odometer and Trip Computer
- Glove Box- Instrument Panel Covered Bin, Driver / Passenger And Rear Door Bins
- Interior Trim -inc: Piano Black Instrument Panel Insert, Piano Black Door Panel Insert, Piano Black Console Insert and Chrome/Metal-Look Interior Accents
- Leather/Metal-Look Steering Wheel
- Manual Adjustable Front Head Restraints and Manual Adjustable Rear Head Restraints
- Manual Air Conditioning- Manual Tilt/Telescoping Steering Column
- NissanConnect Selective Service Internet Access- Outside Temp Gauge
- Perimeter Alarm- Power 1st Row Windows w/Driver 1-Touch Up/Down
- Power Door Locks w/Autolock Feature- Power Rear Windows
- Premium Cloth Seat Trim - Proximity Key For Doors And Push Button Start
- Rear Cupholder
- Remote Keyless Entry w/Integrated Key Transmitter, Illuminated Entry, Illuminated Ignition Switch and Panic Button
- Remote Releases -Inc: Power Cargo Access and Mechanical Fuel
- Seats w/Cloth Back Material- Sliding Front Center Armrest and Rear Center Armrest
- Trip Computer- Urethane Gear Shift Knob- Valet Function

---

## Mechanical

- 110 Amp Alternator- 13.2 Gal. Fuel Tank- 3.52 Axle Ratio
- 49-Amp/Hr 470CCA Maintenance-Free Battery w/Run Down Protection
- Brake Actuated Limited Slip Differential- Electric Power-Assist Speed-Sensing Steering
- Engine: 1.8L DOHC 16-Valve 4-Cylinder- Front And Rear Anti-Roll Bars
- Front Disc/Rear Drum Brakes w/4-Wheel ABS, Front Vented Discs and Brake Assist
- Front-Wheel Drive- Gas-Pressurized Shock Absorbers- Single Stainless Steel Exhaust
- Strut Front Suspension w/Coil Springs- Torsion Beam Rear Suspension w/Coil Springs
- Transmission w/Driver Selectable Mode- Transmission: Xtronic CVT

Boutique Auto Sales

Boutique Auto Sales

View this car on our website at [boutiqueautosales.com/6798012](http://boutiqueautosales.com/6798012)

Website: [boutiqueautosales.com](http://boutiqueautosales.com)

Phone: 310-987-1212

Map: 5950 Laurel Canyon Blvd, North Hollywood, CA 91607

