



2013 Mercedes-Benz GLK 250 BlueTEC

Website Price \$16,495

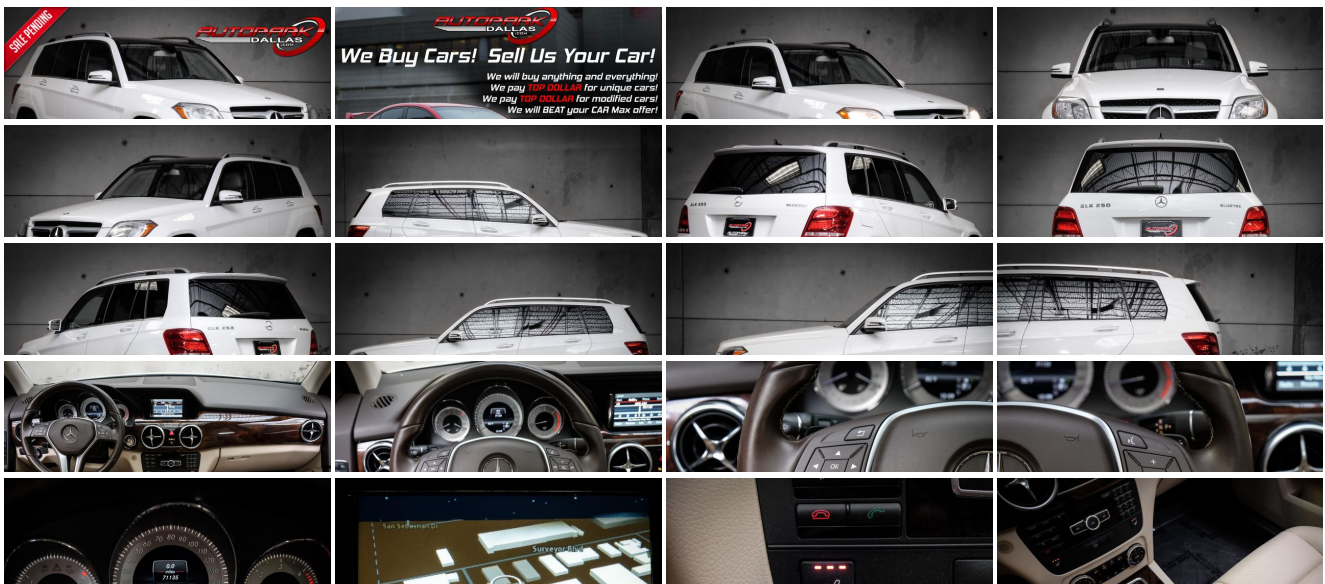
View this vehicle on our website at autoparkdallas.com



(214) 945-2601

2061 S Stemmons Fwy , Lewisville, TX 75067

- Photos
- Details
- Contact



Specifications:

Year:	2013
VIN:	WDCGG0EB1DG132454
Make:	Mercedes-Benz
Model/Trim:	GLK 250 BlueTEC
Condition:	Pre-Owned
Body:	SUV
Exterior:	Polar White
Engine:	2.2L turbocharged I4 BlueTEC diesel engine
Interior:	Almond/Mocha Leather
Transmission:	Driver-adaptive 7-speed automatic transmission -inc: Touch Shift, eco/sport shift programs
Mileage:	71,131
Drivetrain:	All Wheel Drive
Economy:	City 24 / Highway 33

Vehicle Description

AutoPark Dallas is thrilled to offer you this 2013 Mercedes-Benz GLK 250 BlueTEC for sale! A collision of off-road and luxury in one package by a well known name. Mercedes-Benz! The GLK 250 is for those looking for a car that provides a great on-road and off-road experience, while still giving each 5 seats in the car a luxurious experience. Though it has all these off-road capabilities, its main concern is the family aspect that keeps everyone safe and comfortable! Come check out this GLK 250 parked in our indoor 16,000 Sq Ft Showroom located in Dallas , Texas amongst our inventory of 100+ other Performance / Modified and Luxury cars!

2013 Mercedes-Benz GLK 250 BlueTEC

* Clean CarFax !*

* Premium 1 Package !*

Polar White Exterior

Almond / Mocha Leather Interior

Hands Free Bluetooth

Navigation w/ Voice Command

Heated Front Row Seats

Driver Seat Memory

ECO / Sport Modes

Powered Liftgate

Panorama Sunroof

Dual Climate Controls

CD & AUX Capable

Cruise Control

LED Daytime Driving Lights

Manual Mode w/ Paddle Shifters

Steering Wheel Mounted Controls

2.2L Turbocharged I4 BlueTEC Diesel Engine

7-Speed Automatic Transmission

All Wheel Drive

Professionally Detailed!

Well Maintained!

* Free CarFax Report !*

AND SO MUCH MORE!!!

Financing is available!

Check out our Payment Calculator to get an estimate on your monthly payments!

OR

Get pre-approved in no time by filling out a credit application on the 'Finance' section of our website!

We also offer MANY different Extended Warranty options!

Check out our Google Reviews by *Clicking* this LINK!

Referrals and Testimonials is what our business is built on!

The team here at AutoPark Dallas, is dedicated to offering a level of customer service not usually found in the automobile industry. Thanks to years of extensive car buying / selling experience, we pursue quality used and new vehicles that are hand-picked from factory sources. Our love for automobiles and dislike of traditional dealership tactics is what motivates us to provide the service we do! The pride we take in continuing this service long after the vehicle has been delivered is what we strive for! Looking forward to making every effort to see that our customer is completely satisfied and a friend for life!

Pre-purchase inspections are always welcomed!

We also offer airport pick-up, competitive financing options, free CarFax Reports, Car Shipping nationwide, Extended Warranty plans, and so much more!

Trade-In(s) are always accepted or sell us your used car (MODIFIED OR NOT)! Please call or text for more information about Trade-Ins or selling your car to us @ (214) 945-2601!

#(214) 945-2601

Call or Text *Anytime!*

Se habla Español

WE BUY CARS!

WWW.AUTOPARKDALLAS.COM

Installed Options

Interior

- 8-way pwr front bucket seats w/active head restraints -inc: driver memory
- Anti-theft alarm -inc: engine immobilizer- Burl walnut wood interior trim
- Central controller for audio, telephone & optional navigation functions
- Chrome door sill trim- Cruise control
- Digital display for clock & Touch Shift gear/mode selector
- Driver & front passenger 4-way pwr lumbar support- Driver-programmable autolock
- Dual-zone automatic climate control -inc: electrostatic dust & pollen filter, sun sensor
- Electric analog instrumentation -inc: speedometer, tachometer, fuel, coolant
- Flat-folding 2nd row seat- Front center armrest w/storage
- Front door side pockets w/integrated speaker- Front/rear cupholders
- Front/rear floor mats- Illuminated visor vanity mirrors
- Leather-wrapped multi-function pwr-adjustable tilt/telescopic steering wheel -inc: memory
- MB-TeX seat trim
- Mercedes-Benz maintenance system -inc: displays distance remaining to maintenance, type of service due & reminders
- Multi-function 4.5" display -inc: odometer, trip meter, outside temp, audio controls, vehicle reminder & message indicator, driver-programmable settings, trip computer
- Night security illumination- Pwr windows w/1-touch up/down- Rear cargo cover
- Rear window defroster w/auto-shutoff
- SmartKey remote control -inc: remote door lock/unlock, liftgate, fuel-filler door, removable valet key & panic alarm, selective unlock, windows open/close

Exterior

- 19" triple-5-spoke aluminum wheels
- Automatic headlamps w/twilight sensor & locator lighting- Chrome exterior accents
- Chrome load sill plate- Halogen headlamps- Integrated front foglamps
- Intermittent front wipers- LED taillights- P235/50R19 all-season tires- Privacy glass
- Pwr heated mirrors w/LED turn indicators- Rear foglamp
- Rear intermittent wiper w/washer- Roof rails

Safety

- 8-way pwr front bucket seats w/active head restraints -inc: driver memory
- Anti-theft alarm -inc: engine immobilizer- Burl walnut wood interior trim
- Central controller for audio, telephone & optional navigation functions
- Chrome door sill trim- Cruise control
- Digital display for clock & Touch Shift gear/mode selector
- Driver & front passenger 4-way pwr lumbar support- Driver-programmable autolock
- Dual-zone automatic climate control -inc: electrostatic dust & pollen filter, sun sensor
- Electric analog instrumentation -inc: speedometer, tachometer, fuel, coolant
- Flat-folding 2nd row seat- Front center armrest w/storage
- Front door side pockets w/integrated speaker- Front/rear cupholders
- Front/rear floor mats- Illuminated visor vanity mirrors
- Leather-wrapped multi-function pwr-adjustable tilt/telescopic steering wheel -inc: memory
- MB-TeX seat trim
- Mercedes-Benz maintenance system -inc: displays distance remaining to maintenance, type of service due & reminders
- Multi-function 4.5" display -inc: odometer, trip meter, outside temp, audio controls, vehicle reminder & message indicator, driver-programmable settings, trip computer
- Night security illumination- Pwr windows w/1-touch up/down- Rear cargo cover
- Rear window defroster w/auto-shutoff
- SmartKey remote control -inc: remote door lock/unlock, liftgate, fuel-filler door, removable valet key & panic alarm, selective unlock, windows open/close

Mechanical

- 2.2L turbocharged I4 BlueTEC diesel engine
- 4-wheel adaptive ventilated pwr disc brakes -inc: brake drying, hill-start assist, pre-charging
- 4MATIC all-wheel drive- AGILITY CONTROL suspension system w/selective damping
- Driver-adaptive 7-speed automatic transmission -inc: Touch Shift, eco/sport shift programs
- Dual chrome exhaust tips- Independent 3-link front suspension
- Independent multi-link rear suspension
- Speed-sensitive hydraulic pwr steering w/variable centering

Option Packages

Factory Installed Packages

HEATED FRONT SEATS	\$750
IPOD/MP3 MEDIA INTERFACE -inc: iPod/MP3 cable	\$310
KEYLESS-GO	\$650
PRE-WIRING FOR BECKER MAP PILOT	\$200
PREMIUM 1 PKG -inc: garage door opener, auto-dimming rearview mirror w/compass, auto-dimming driver & front passenger side exterior mirrors w/memory, iPod & MP3 media interface, SiriusXM satellite radio, pwr liftgate, pwr tilt/sliding panorama sunroof, 115V pwr outlet in cargo	\$3,450
SIRIUSXM SATELLITE RADIO	\$460
STANDARD PAINT	
POLAR WHITE	
ALMOND/MOCHA, MB-TEX SEAT TRIM	
Option Packages Total	\$5,820

AUTOPARK

Dallas

Auto Park Dallas

View this car on our website at autoparkdallas.com/6796419

Website: autoparkdallas.com

Phone: (214) 945-2601

Map: 2061 S Stemmons Fwy, Lewisville, TX 75067

