

# 2015 Jeep Wrangler Unlimited Sport

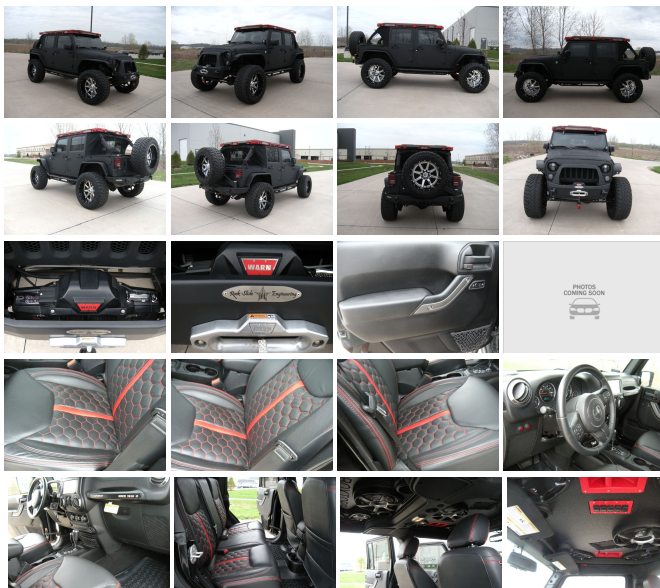
View this car on our website at [worldclassmotorcarsstl.com/6785056/ebrochure](http://worldclassmotorcarsstl.com/6785056/ebrochure)



Our Price **\$54,950**

## Specifications:

<b>Year:</b>	2015
<b>VIN:</b>	1C4HJWDGXFL602258
<b>Make:</b>	Jeep
<b>Model/Trim:</b>	Wrangler Unlimited Sport
<b>Condition:</b>	Pre-Owned
<b>Body:</b>	SUV
<b>Exterior:</b>	Black Clearcoat
<b>Engine:</b>	ENGINE: 3.6L V6 24V VVT
<b>Interior:</b>	Black Leather
<b>Transmission:</b>	TRANSMISSION: 5-SPEED AUTOMATIC (W5A580)
<b>Mileage:</b>	2,650
<b>Drivetrain:</b>	4 Wheel Drive
<b>Economy:</b>	City 16 / Highway 20



**FREE SHIPPING TO THE 48 STATES  
AT THE BUY IT NOW!!!!**

World Class Motorcars of St Louis MO is offering a rare opportunity to own a custom Jeep Wrangler Unlimited with a Starwood Motors Custom SEMA build package. These Jeeps are in excess of \$90k when new and you can own this one at a substantial saving. The vehicle started its life as a black Wrangler Unlimited. Factory options from Jeep included the Connectivity Group with tire pressure monitors. Next the vehicle was equipped with the Max Trailer Tow Package, Supplemental front seat airbags, 5 speed automatic transmission and a 3.73 locking rear differential and the Alpine 9 speaker Stereo system with All weather subwoofer. The vehicle was then sent to the Starwood Motors Facility in Dallas TX where every Jeep is built in house to the exact standards of the Starwood Motors team This

standards of the Starwood Motors team. This Jeep was upfitted with a special package that Starwood used at the 2015 SEMA (Specialty Equipment Market Assoc). First the entire exterior is finished in Starwood Motors Exclusive Kevlar Rhino Bed Liner material. This is a textured surface that is colored to Matte Black Finish. No need to worry about scuffs, scratches or marring the paint finish. This is the toughest surface you can apply to a vehicle. The next step is the Tera Flex Brand suspension lift with new Shocks and Coils. To finish the exterior there are 22" Fuel Two Piece black and chrome wheels. Last steps include Verona Leather interior, XRC Gen2 bumper with Warn 10k winch, rugged ridge spare tire carrier and light guards and Vision X Xenon headlamps. This Vehicle was presented in conjunction with a company called PROBOX. They have added the special top that includes 8 6x9 three way speakers and two 10" subwoofers power by 2 400 watt PROBOX amps and a complete light package that surrounds the top.

## VEHICLE CONDITION

This is a one owner car in excellent condition.

It is Carfax Certified and has never been wrecked or damaged. The vehicle comes complete with a soft top and hardtop. The interior is in excellent condition and was previously owned by a non smoker. A fresh fluid service has just been performed. The vehicle has been professionally cleaned and detailed and is ready to go.

## TERMS OF THE SALE

World Class Motorcars is a licensed and bonded Missouri auto dealer and all laws pertaining to the sale of motor vehicles in the state of Missouri shall apply. I have made every effort to accurately describe this vehicle. If you are unsure of something please contact me via phone at 636-530-1133 and I will gladly answer your questions. If you email please use EBay Message system for security reasons. I will respond to email questions through EBay. I never charge additional "Doc

through eBay. I never charge additional Doc Fees or fees for paperwork or FedEx. The amount you bid is what you pay. Free shipping is included at the BUY IT NOW price to anywhere in the continental US Free airport pickup at Lambert St Louis airport is also provided. I do reserve the right to end the auction early in the event of a prior sale.

2015 Jeep Wrangler Unlimited Sport

World Class Motorcars - (636) 530-1133 - View this car on our website at [worldclassmotorcarsstl.com/6785056/ebrochure](http://worldclassmotorcarsstl.com/6785056/ebrochure)

### Our Location :



2015 Jeep Wrangler Unlimited Sport

World Class Motorcars - (636) 530-1133 - View this car on our website at [worldclassmotorcarsstl.com/6785056/ebrochure](http://worldclassmotorcarsstl.com/6785056/ebrochure)

## Installed Options

### Interior

- 2 12V DC Power Outlets- 2 Seatback Storage Pockets
- 4-Way Passenger Seat -inc: Manual Recline and Fore/Aft Movement
- 6-Way Driver Seat -inc: Manual Recline, Height Adjustment and Fore/Aft Movement
- 60-40 Folding Split-Bench Front Facing Fold Forward Seatback Rear Seat
- Analog Display- Carpet Floor Trim, Carpet And Rubber Mat
- Cloth Bucket Seats -inc: adjustable head restraints - Compass
- Cruise Control w/Steering Wheel Controls- Day-Night Rearview Mirror
- Delayed Accessory Power- Driver And Passenger Visor Vanity Mirrors
- Fade-To-Off Interior Lighting- Front Center Armrest w/Storage- Front Cupholder
- Full Carpet Floor Covering -inc: Carpet Front And Rear Floor Mats
- Full Floor Console w/Locking Storage and 2 12V DC Power Outlets
- Gauges -inc: Speedometer, Odometer, Engine Coolant Temp, Tachometer, Trio Odometer

and Trip Computer

- Instrument Panel Bin, Dashboard Storage, Driver And Passenger Door Bins
- Interior Trim -inc: Metal-Look Instrument Panel Insert, Metal-Look Door Panel Insert and Metal-Look Interior Accents
- Locking Cargo Area Concealed Storage- Locking Glove Box- Manual 1st Row Windows
- Manual Adjustable Front Head Restraints and Fixed Rear Head Restraints
- Manual Air Conditioning- Manual Rear Windows and Removable 3rd Row Windows
- Manual Tilt Steering Column- Outside Temp Gauge- Rear Cupholder
- Sentry Key Engine Immobilizer- Trip Computer- Urethane Gear Shift Knob

## Exterior

- Aero-Composite Halogen Headlamps- Black Door Handles- Black Fender Flares
- Black Front Bumper w/2 Tow Hooks- Black Manual Side Mirrors w/Manual Folding
- Black Rear Bumper w/1 Tow Hook- Black Side Windows Trim- Body-Colored Grille
- Clearcoat Paint- Conventional Rear Cargo Access
- Convertible w/Fixed Roll-Over Protection- Front Fog Lamps
- Full-Size Spare Tire Mounted Outside Rear- Fully Galvanized Steel Panels
- Light Tinted Glass- Manual Tailgate/Rear Door Lock- Removable Rear Window
- Steel Spare Wheel- Sunrider Soft Top- Tires: P225/75R16 BSW On/Off Road
- Variable Intermittent Wipers- Wheels: 16" x 7.0" Luxury Styled Steel

## Safety

- 2 12V DC Power Outlets- 2 Seatback Storage Pockets
- 4-Way Passenger Seat -inc: Manual Recline and Fore/Aft Movement
- 6-Way Driver Seat -inc: Manual Recline, Height Adjustment and Fore/Aft Movement
- 60-40 Folding Split-Bench Front Facing Fold Forward Seatback Rear Seat
- Analog Display- Carpet Floor Trim, Carpet And Rubber Mat
- Cloth Bucket Seats -inc: adjustable head restraints - Compass
- Cruise Control w/Steering Wheel Controls- Day-Night Rearview Mirror
- Delayed Accessory Power- Driver And Passenger Visor Vanity Mirrors
- Fade-To-Off Interior Lighting- Front Center Armrest w/Storage- Front Cupholder
- Full Carpet Floor Covering -inc: Carpet Front And Rear Floor Mats
- Full Floor Console w/Locking Storage and 2 12V DC Power Outlets
- Gauges -inc: Speedometer, Odometer, Engine Coolant Temp, Tachometer, Trip Odometer and Trip Computer
- Instrument Panel Bin, Dashboard Storage, Driver And Passenger Door Bins
- Interior Trim -inc: Metal-Look Instrument Panel Insert, Metal-Look Door Panel Insert and Metal-Look Interior Accents
- Locking Cargo Area Concealed Storage- Locking Glove Box- Manual 1st Row Windows
- Manual Adjustable Front Head Restraints and Fixed Rear Head Restraints
- Manual Air Conditioning- Manual Rear Windows and Removable 3rd Row Windows
- Manual Tilt Steering Column- Outside Temp Gauge- Rear Cupholder
- Sentry Key Engine Immobilizer- Trip Computer- Urethane Gear Shift Knob

## Mechanical

- 1000# Maximum Payload- 160 Amp Alternator- 2 Skid Plates- 22.5 Gal. Fuel Tank
- 3.21 Rear Axle Ratio
- 4-Wheel Disc Brakes w/4-Wheel ABS, Front And Rear Vented Discs, Brake Assist and Hill Hold Control
- 50 State Emissions- 600CCA Maintenance-Free Battery- Auto Locking Hubs
- Brake Actuated Limited Slip Differential- Engine Oil Cooler- Engine: 3.6L V6 24V VVT
- Front And Rear Anti-Roll Bars- GVWR: 5,400 lbs- Gas-Pressurized Shock Absorbers
- Hydraulic Power-Assist Steering- Leading Link Front Suspension w/Coil Springs
- Manual Transfer Case- Normal Duty Suspension- Part-Time Four-Wheel Drive
- Single Stainless Steel Exhaust- Towing Equipment -inc: Trailer Sway Control
- Trailing Arm Rear Suspension w/Coil Springs- Transmission: 6-Speed Manual (NSG370)

## Option Packages

### Factory Installed Packages

ENGINE: 3.6L V6 24V VVT

TRANSMISSION: 5-SPEED AUTOMATIC (W5A580)

-inc: Tip Start, Hill Descent Control \$1,350

-  
ALPINE 9-SPEAKER W/ALL WEATHER  
SUBWOOFER

-inc: Amplified 552W 9 speaker,  
including subwoofer \$845

-  
ANTI-SPIN DIFFERENTIAL REAR AXLE  
\$395

-  
CONNECTIVITY GROUP

-inc: Vehicle Information Center,  
Uconnect Voice Command  
w/Bluetooth, Tire Pressure  
Monitoring Display \$670

-  
MAX TOW PACKAGE

-inc: 3.73 Rear Axle Ratio, Trailer  
Tow Group, Class II Receiver  
Hitch, Trailer Tow w/4-Pin  
Connector Wiring \$845

-  
SUPPLEMENTAL FRONT SEAT SIDE AIR  
BAGS

\$495

-  
Option Packages Total  
\$4,600

World Class Motorcars

[worldclassmotorcarsstl.com](http://worldclassmotorcarsstl.com)

(636) 530-1133

635 Spirit Valley Central Drive

Chesterfield, Missouri 63005

© 2020 AutoRevo - All rights reserved. - Powered by AutoRevo