

2020 Jeep Wrangler JL Unlimited Rubicon 4X4 LIFTED,BUMPERS,LED'S,NAV,HTD LTH

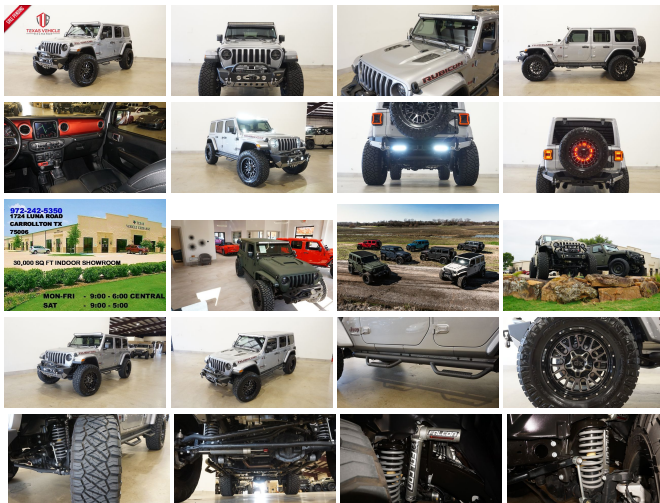
View this car on our website at tveauto.com/6784997/ebrochure



Our Price **\$74,900**

Specifications:

Year:	2020
VIN:	1C4HJXFGXLW281030
Make:	Jeep
Stock:	281030
Model/Trim:	Wrangler JL Unlimited Rubicon 4X4 LIFTED,BUMPERS,LED'S,NAV,HTD LTH
Condition:	Pre-Owned
Body:	SUV
Exterior:	Billet Silver Metallic Clearcoat
Engine:	ENGINE: 3.6L V6 24V VVT UPG I W/ESS
Interior:	Black Leather
Transmission:	TRANSMISSION: 8-SPEED AUTOMATIC (850RE)
Mileage:	7,651
Drivetrain:	4 Wheel Drive
Economy:	City 17 / Highway 22



NATION WIDE FINANCING

SUBMIT CREDIT APP WWW.TVEAUTO.COM

OR CALL 972-242-5350

**"BILLET SILVER METALLIC CLEAR COAT
EDITION"**

CUSTOM BUILT 2020 JEEP WRANGLER JL
UNLIMITED RUBICON 4X4 WITH 24R
PACKAGE

UPGRADES INCLUDE:

OF GRADES INCLUDE:

- * BILLET SILVER METALLIC CLEAR COAT
- * PAINTED TO MATCH 3 PIECE HARD TOP
- * CUSTOM ALEA BLACK LEATHER WITH SILVER STITCHING
- * FACTORY REMOTE START
- * REMOTE PROXIMITY KEYLESS ENTRY
- * COLD WEATHER GROUP
- * LED LIGHTING GROUP
- * SAFETY GROUP
- * FACTORY 8.4 INCH TOUCH SCREEN NAVIGATION WITH HD AM/FM/SIRIUS STEREO & ALPINE PREMIUM AUDIO SYSTEM
- * FACTORY BACK-UP CAMERA
- * U-CONNECT
- * (4.10 AXLE RATIO)
- * SMITTYBILT XRC GEN 2 FRONT BUMPER WITH LED FOGLIGHTS
- * FRONT D-RINGS & ISOLATORS (BILLET SILVER)
- * SMITTYBILT NEW GEN II "X20" 10,000 LB WATERPROOF AND WIRELESS CONTROL WINCH WITH SYNTHETIC ROPE
- * FACTOR 55 PROLINK (BLACK)
- * FACTORY LED HEADLIGHTS
- * RUGGED RIDGE BLACK HEADLIGHT GUARDS
- * MOPAR 10TH ANNIVERSARY RUBICON POWER DOME HOOD
- * PAINTED TO MATCH FENDER FLARES
- * RUBICON EXPRESS 2.5" LIFT KIT WITH TERAFLX FALCON SERIES 3 SHOCKS & RESERVOIRS
- * TERAFLX FALCON STABILIZER KIT

- * MOPAR AUXILIARY SWITCH BANK KIT
- * 50" LED LIGHT BAR AND 2 RIGID INDUSTRIES DUALY D2 LED PILLAR LIGHTS (LIGHT BRACKETS PAINTED TO MATCH)
- * SMITTYBILT BLACK TUBULAR STEPS
- * EVOLUTION 2 BLACK LED TAIL LIGHTS
- * SMITTYBILT PIVOT HD TIRE CARRIER
- * RUGGED RIDGE LED THIRD BRAKE LIGHT RING
- * SMITTYBILT XRC GEN 2 REAR BUMPER WITH 2 LED LIGHTS & REAR PARK DISTANCE SENSORS
- * REAR D-RINGS & ISOLATORS (BILLET SILVER)
- * MAGNAFLOW BLACK SERIES EXHAUST SYSTEM
- * ALL WEATHER FLOOR MATS
- * TAZER JL PROGRAMMER WITH SPEEDOMETER CALIBRATION
- * 20" KMC "XD842 SNARE" WHEELS
- * NITTO RIDGE GRAPPLER 37X13.50R/20 TIRES

WE BUILD EVERY JEEP WITH PRIDE! DO NOT HESITATE TO CALL US WITH THIS JEEP BUILD. WE CAN MAKE CHANGES TO THIS JEEP BUILD OR CUSTOM BUILD ANY JEEP TO YOUR PREFERENCE. GIVE US A CALL @ 972-242-5350 OR STOP BY FOR A TEST DRIVE. 1724 LUNA RD IN CARROLLTON - 2 MILES NORTH OF 635.

Our Location :



2020 Jeep Wrangler JL Unlimited Rubicon 4X4 LIFTED,BUMPERS,LED'S,NAV,HTD LTH

Texas Vehicle Exchange - 972-242-5350 - View this car on our website at veauto.com/6784997/ebrochure

Installed Options

Interior

- 6-Way Driver Seat -inc: Manual Recline, Height Adjustment, Fore/Aft Movement and Manual Lumbar Support
- Front Seats w/Cloth Back Material and Manual Driver Lumbar
- Full Carpet Floor Covering -inc: Carpet Front And Rear Floor Mats
- Gauges -inc: Speedometer, Odometer, Voltmeter, Oil Pressure, Engine Coolant Temp, Tachometer, Engine Hour Meter, Trip Odometer and Trip Computer
- Power 1st Row Windows w/Driver And Passenger 1-Touch Down
- Power Door Locks w/Autolock Feature
- Power Rear Windows and Removable 3rd Row Windows
- Premium Cloth Low-Back Bucket Seats- Proximity Key For Push Button Start Only
- Remote Keyless Entry w/Integrated Key Transmitter, Illuminated Entry and Panic Button
- Trip Computer- 2 12V DC Power Outlets
- 2 12V DC Power Outlets and 1 AC Power Outlet - 2 Seatback Storage Pockets
- 4-Way Passenger Seat -inc: Manual Recline and Fore/Aft Movement
- 60-40 Folding Split-Bench Front Facing Fold Forward Seatback Premium Cloth Rear Seat
- Air Filtration- Analog Display- Cargo Space Lights
- Carpet Floor Trim, Carpet And Rubber Mat- Compass
- Cruise Control w/Steering Wheel Controls- Day-Night Rearview Mirror
- Delayed Accessory Power
- Driver And Passenger Visor Vanity Mirrors w/Driver And Passenger Illumination
- Fade-To-Off Interior Lighting- Front And Rear Map Lights
- Front Center Armrest w/Storage
- Full Floor Console w/Locking Storage, 2 12V DC Power Outlets and 1 AC Power Outlet
- Garage Door Transmitter- HVAC -inc: Console Ducts- Illuminated Front Cupholder
- Illuminated Rear Cupholder
- Instrument Panel Bin, Dashboard Storage, Driver / Passenger And Rear Door Bins
- Interior Trim -inc: Colored Instrument Panel Insert, Metal-Look Door Panel Insert, Metal-Look Console Insert and Metal-Look Interior Accents
- Leather Steering Wheel- Locking Cargo Area Concealed Storage- Locking Glove Box

Option Packages

Factory Installed Packages

ENGINE: 3.6L V6 24V VVT UPG I W/ESS

TRANSMISSION: 8-SPEED AUTOMATIC (850RE)

-inc: TIP Start, Hill Descent Control \$2,750

8.4" RADIO & PREMIUM AUDIO GROUP

-inc: SiriusXM Traffic Plus, Alpine Premium Audio System, HD Radio, Radio: Uconnect 4C Nav w/8.4" Display, For Details, Visit DriveUconnect.com, Rear View Auto Dim Mirror, 1-Year SiriusXM Guardian Trial, 5-Year SiriusXM Travel Link Service, GPS Navigation, 5-Year SiriusXM Traffic Service, SiriusXM Travel Link, 4G LTE Wi-Fi Hot Spot, Emergency/Assistance Call, 8.4" Touchscreen Display \$1,845

BODY COLOR 3-PIECE HARD TOP

\$2,295

BODY COLOR FENDER FLARES

\$595

COLD WEATHER GROUP

-inc: Heated Steering Wheel, Heated Front Seats \$995

LED LIGHTING GROUP

-inc: Daytime Running Lamps LED Accents, Front LED Fog Lamps, LED Reflector \$1,195

- Manual Adjustable Front Head Restraints and Foldable Rear Head Restraints
- Manual Tilt/Telescoping Steering Column- Outside Temp Gauge- Perimeter Alarm
- Redundant Digital Speedometer- Sentry Key Engine Immobilizer
- Smart Device Integration- Systems Monitor- Urethane Gear Shifter Material
- Voice Activated Dual Zone Front Automatic Air Conditioning

Exterior

- Black Front Bumper w/2 Tow Hooks- Black Rear Bumper w/1 Tow Hook
- Front Fog Lamps
- Fully Automatic Aero-Composite Halogen Daytime Running Headlamps w/Delay-Off
- Manual Convertible Top w/Fixed Roll-Over Protection
- Tailgate/Rear Door Lock Included w/Power Door Locks
- Tires: LT285/70R17C BSW Off-Road- Wheels: 17" x 7.5" Machined w/Black Pockets
- 97 MPH Vehicle Max Speed Calibration- Aluminum Spare Wheel
- BF Goodrich Brand Tires- Black Door Handles
- Black Power Heated Side Mirrors w/Manual Folding- Black Side Windows Trim
- Black Wheel Well Trim and Black Fender Flares- Body-Color Grille w/Colored Accents
- Clearcoat Paint w/Badging- Conventional Rear Cargo Access- Deep Tinted Glass
- Full-Size Spare Tire Mounted Outside Rear
- Galvanized Steel/Aluminum/Magnesium Panels- Non-Lock Fuel Cap w/o Discriminator
- Removable Rear Window- Variable Intermittent Wipers

Safety

- 6-Way Driver Seat -inc: Manual Recline, Height Adjustment, Fore/Aft Movement and Manual Lumbar Support
- Front Seats w/Cloth Back Material and Manual Driver Lumbar
- Full Carpet Floor Covering -inc: Carpet Front And Rear Floor Mats
- Gauges -inc: Speedometer, Odometer, Voltmeter, Oil Pressure, Engine Coolant Temp, Tachometer, Engine Hour Meter, Trip Odometer and Trip Computer
- Power 1st Row Windows w/Driver And Passenger 1-Touch Down
- Power Door Locks w/Autolock Feature
- Power Rear Windows and Removable 3rd Row Windows
- Premium Cloth Low-Back Bucket Seats- Proximity Key For Push Button Start Only
- Remote Keyless Entry w/Integrated Key Transmitter, Illuminated Entry and Panic Button
- Trip Computer- 2 12V DC Power Outlets
- 2 12V DC Power Outlets and 1 AC Power Outlet - 2 Seatback Storage Pockets
- 4-Way Passenger Seat -inc: Manual Recline and Fore/Aft Movement
- 60-40 Folding Split-Bench Front Facing Fold Forward Seatback Premium Cloth Rear Seat
- Air Filtration- Analog Display- Cargo Space Lights
- Carpet Floor Trim, Carpet And Rubber Mat- Compass
- Cruise Control w/Steering Wheel Controls- Day-Night Rearview Mirror
- Delayed Accessory Power
- Driver And Passenger Visor Vanity Mirrors w/Driver And Passenger Illumination
- Fade-To-Off Interior Lighting- Front And Rear Map Lights
- Front Center Armrest w/Storage
- Full Floor Console w/Locking Storage, 2 12V DC Power Outlets and 1 AC Power Outlet
- Garage Door Transmitter- HVAC -inc: Console Ducts- Illuminated Front Cupholder
- Illuminated Rear Cupholder
- Instrument Panel Bin, Dashboard Storage, Driver / Passenger And Rear Door Bins
- Interior Trim -inc: Colored Instrument Panel Insert, Metal-Look Door Panel Insert, Metal-Look Console Insert and Metal-Look Interior Accents
- Leather Steering Wheel- Locking Cargo Area Concealed Storage- Locking Glove Box
- Manual Adjustable Front Head Restraints and Foldable Rear Head Restraints
- Manual Tilt/Telescoping Steering Column- Outside Temp Gauge- Perimeter Alarm
- Redundant Digital Speedometer- Sentry Key Engine Immobilizer
- Smart Device Integration- Systems Monitor- Urethane Gear Shifter Material
- Voice Activated Dual Zone Front Automatic Air Conditioning

Mechanical

- 4-Wheel Disc Brakes w/4-Wheel ABS, Front Vented Discs, Brake Assist and Hill Hold Control
- Brake Actuated Limited Slip Differential- Driver Selectable Front Locking Differential
- Driver Selectable Rear Locking Differential- Transmission: 6-Speed Manual
- 21.5 Gal. Fuel Tank- 220 Amp Alternator- 4.10 Rear Axle Ratio- 5 Skid Plates
- 50 State Emissions- 650CCA Maintenance-Free Battery w/Run Down Protection
- 892# Maximum Payload- Auto Locking Hubs- Aux Battery
- Electro-Hydraulic Power Assist Steering- Engine Oil Cooler
- Engine: 3.6L V6 24V VVT UPG I w/ESS
- Front Active w/Driver Control Anti-Roll Bar and Rear Anti-Roll Bar- GVWR: 5,800 lbs
- HD Shock Absorbers- Leading Link Front Suspension w/Coil Springs

FROM LED Fog Lamps, LED Reflector
Headlamps, LED Taillamps

REMOTE PROXIMITY KEYLESS ENTRY

\$495

SAFETY GROUP

-inc: ParkSense Rear Park Assist System, Blind Spot & Cross Path Detection, LED Taillamps

\$995

QUICK ORDER PACKAGE 24R

-inc: Engine: 3.6L V6 24V VVT UPG I w/ESS,
Transmission: 8-Speed Automatic (850RE)

BILLET SILVER METALLIC CLEARCOAT

\$245

Option Packages Total

\$11,410

- Manual Transfer Case- Part-Time Four-Wheel Drive- Performance Suspension
 - Single Stainless Steel Exhaust- Stop-Start Dual Battery System
 - Towing Equipment -inc: Trailer Sway Control
 - Trailing Arm Rear Suspension w/Coil Springs
-

Texas Vehicle Exchange

tveauto.com

972-242-5350

1724 Luna Road

Carrollton, TX 75006

© 2024 AutoRevo - All rights reserved. - Powered by AutoRevo