

PREMIER
AUTOMOTIVE SOURCE, LLC

3075 Leon Rd. Ste. 6
Jacksonville, FL 32246
Ph 904.382.7230

www.PremierAutomotiveSource.com



NO DEALER FEES OR HIDDEN FEES!

PREMIER
AUTOMOTIVE SOURCE, LLC

2006 Jeep Wrangler Rubicon

Nolan Hill

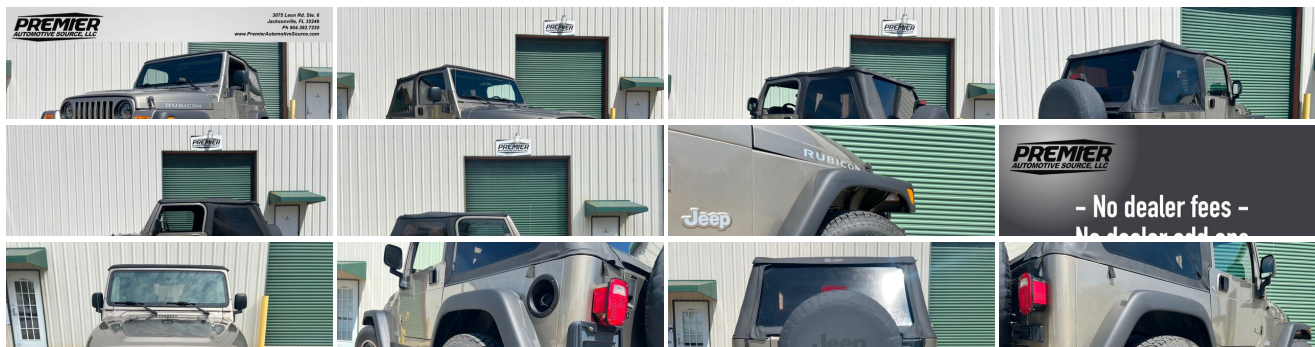
Our Price \$0

View this vehicle on our website at premierautomotivesource.com



445 Tresca Rd. , Jacksonville , FL 32225

Photos
Details
Contact



**- No dealer fees -
No hidden fees**



Specifications:

Year:	2006
VIN:	1J4FA69SX6P706255
Make:	Jeep
Model/Trim:	Wrangler Rubicon
Condition:	Pre-Owned
Body:	SUV
Exterior:	Light Khaki Metallic
Engine:	4.0L SMPi I6 "POWER TECH" ENGINE
Interior:	Khaki Cloth
Transmission:	6-SPEED MANUAL TRANSMISSION
Mileage:	104,150
Drivetrain:	4 Wheel Drive
Economy:	City 14 / Highway 18

Vehicle Description

2006 JEEP WRANGLER RUBICON TJ

- CLEAN SOUTHERN JEEP -
- LEGENDARY 4.0 INLINE 6 CYL ENGINE -
- 6 SPEED MANUAL TRANSMISSION -
- FACTORY DANA 44'S FRONT & REAR -
- FACTORY 4.10 GEARS -
- FACTORY LOCKERS -
- ROUGH CONTRY 2" LIFT -
- MAMMOTH WHEELS -
- SPRAY LINED FLOORS -
- SOFTOP -
- COLD A/C -
- NO DEALER FEES, NO HIDDEN FEES! -
- WE TAKE TRADE INS -
- WE SELL WORLDWIDE -

CALL OR TEXT NOLAN @ 904-382-7230

- LIVE WALK AROUND VIDEO AVAILABLE -

No dealer fees, no dealer add ons, no hidden fees! When making price comparisons please consider that other dealer's listed prices may not always be the final price. We do not have extra fees tacked onto our purchase price. It's the price of the vehicle plus your applicable state sales tax, tag, registration and title fees. ALL INVENTORY IS STORED INDOORS AND SHOWN BY APPOINTMENT. Trades accepted.

2006 TJ Jeep Wrangler Rubicon, Khaki metallic, Khaki interior, Bestop Soft Top, Factory DANA 44s, Factory 4:10 gears, Factory Locking Differentials, Factory 4 wheel disc brakes, 2" lift, Mammoth wheels with 265/75/16 A/T tires with plenty of tread, spray lined interior floors, Cold A/C, 4.0L inline 6 cylinder with a 6 speed manual transmission. This Jeep has had lots of recent service including new A/C evaporator, heater core, clutch, brakes and tires all have been replaced within the past 10k miles. It runs, drives, and looks good. It is very clean inside and out as well as underneath. Sale includes 2 keys, rubber mats, and owners manuals.

For financing we recommend LightStream, a division of Truist Bank, to offer low-interest financing to people with good credit. LightStream has an easy online application process, and provides a quick response during business hours. This is a confidential process between you and LightStream. For more information or to apply:

<http://lightstream.com/?fact=14755&irad=391622&irmp=304022>

(Please note, we may receive a referral fee from LightStream through this link.)

Installed Options

Interior

- AM/FM stereo w/CD player-inc: changer control
- Cloth reclining high-back front bucket seats - (7) speakers w/subwoofer- Air conditioning
- Aux 12-volt pwr outlet- Black diamond plate sill guards- Cargo tie down loops
- Courtesy/underhood lamps- Easy access tip/slide driver seat
- Easy access tip/slide passenger seat- Fixed long mast antenna- Folding rear seat
- Front/rear seat, wheelhouse, cargo area carpeting- Full length floor console
- Glove box w/lock- Sirius satellite radio-inc: 1-year service- Sport bar w/full padding
- Tilt steering column

Exterior

- Easy folding soft top- Bumper extensions- Deep tint sunscreen glass- Fog lamps
- Fold away mirrors- Front door light tinted windows- Premium fender flares
- Variable intermittent windshield wipers

Safety

- AM/FM stereo w/CD player-inc: changer control
- Cloth reclining high-back front bucket seats - (7) speakers w/subwoofer- Air conditioning
- Aux 12-volt pwr outlet- Black diamond plate sill guards- Cargo tie down loops
- Courtesy/underhood lamps- Easy access tip/slide driver seat
- Easy access tip/slide passenger seat- Fixed long mast antenna- Folding rear seat
- Front/rear seat, wheelhouse, cargo area carpeting- Full length floor console
- Glove box w/lock- Sirius satellite radio-inc: 1-year service- Sport bar w/full padding
- Tilt steering column

Mechanical

- (2) front/(1) rear tow hooks- (5) 16" x 8.0" "Moab" aluminum wheels
- 117-amp alternator- 19 gallon fuel tank- 4-wheel pwr disc brakes
- 4.0L SMPI I6 "Power Tech" engine - 4.11 axle ratio- 4600# GVWR
- 4:1 Rocktrac HD part-time 4WD system- 6-speed manual transmission
- 600-CCA maintenance free battery- Front stabilizer bar
- Full size spare tire w/outside carrier- HD Dana 44 front axle- HD Dana 44 rear axle
- High pressure gas-charged shock absorbers- LT245/75R16 on/off road BSW tires
- Next generation engine controller- Pwr recirculating ball steering
- Skid plates-inc: transfer case, fuel tank- Tru-lok front/rear differential

Option Packages

Factory Installed Packages

4.0L SMPI I6 "POWER TECH" ENGINE

6-SPEED MANUAL TRANSMISSION

SPEED CONTROL

-inc: leather wrapped steering wheel

\$300

Option Packages Total

\$300

DEALER POLICIES: Please review all photos carefully and ask questions prior to making an offer if there is anything you are not sure about. We welcome pre-sale inspections. Any descriptions we make of vehicles shall not be construed as any type of warranty. Our pictures are as thorough and precise as we can make them. Please be advised that this is not a brand new vehicle. It is a pre-owned vehicle and has previously been driven, so therefore with respect to the miles there will most likely be average wear and tear, such as minor scratches, minor dings, or small rock chips. We do our best to disclose any substantial blemishes in our photos and descriptions. If our vehicles include manuals, service records or extra sets of keys, it will be shown in the pictures and noted in the description. The advertised mileage is a round number and may vary slightly from the exact mileage due to demo and test drives. Once a vehicle leaves our premises, no refunds, credits, or adjustments, will be issued. All Vehicles are conveyed AS-IS. Dealer neither makes nor implies any warranty on this or any vehicle. Any dispute that may arise shall take place under the laws of the state of Florida, in the state of Florida and all sales are subject to binding Arbitration under the rules of the American Arbitration Association. All applicable sales tax, tag and title fees apply. When we receive a vehicle into our inventory, sometimes the title is being held by a bank or lender as collateral for the previous loan or payoff. Occasionally there is a delay in receiving the title from these lending institutions after payoff of the loan for up to two weeks. While we usually have the titles in our possession, there are instances where we may be waiting for the title to arrive. We guarantee clean titles on our vehicles unless otherwise noted. In some cases we may hold titles until cashiers checks or other funds are cleared or unless other arrangements were agreed upon. Titles will be sent via Fedex for proper tracking. Thank you for your patience and understanding. The photographs contained on this, and any other site under the PremierAutomotiveSource.com domain, are the property of Premier Automotive Source LLC and are protected by United States and International copyright laws. All copyright, trademark, and other intellectual property rights in this site, are the property of Premier Automotive Source LLC. No permission, either express or implied, is granted for the electronic transmission, storage, retrieval, or printing of the photographs, other than that which is related to the normal "caching" practices of web browsers and activities such as downloading solely for your personal enjoyment. No parties/individuals visiting or viewing images from PremierAutomotiveSource.com, may otherwise copy, modify, publish, transmit, or distribute the contents of the photographs found herein. Express written permission must be granted, on behalf of the photographer (copyright holder, Premier Automotive Source LLC), in order to use these photographs for any purpose that is not outlined above. Your use of PremierAutomotiveSource.com or viewing of this statement indicates your acceptance of these conditions.

Premier Automotive Source LLC

Premier Automotive Source LLC

View this car on our website at premierautomotivesource.com/6780695

Website: premierautomotivesource.com

Phone:

Map: 445 Tresca Rd. , Jacksonville , FL 32225

