



## 2012 Ford Super Duty F-350 SRW Pickup XL

**Our Price \$15,950**

View this vehicle on our website at [randyadamsinc.com](http://randyadamsinc.com)

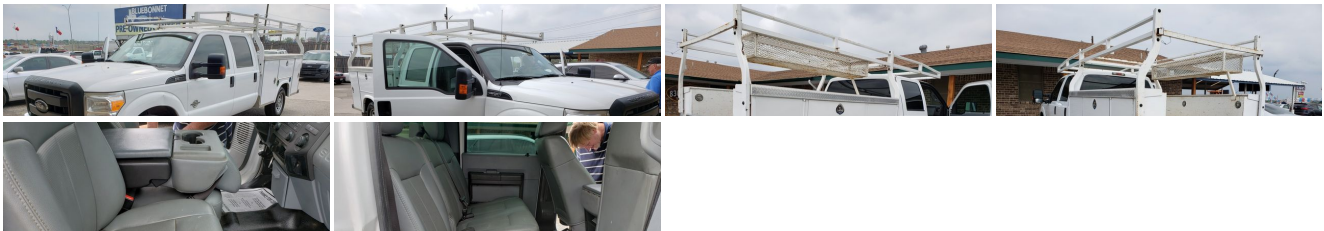
[\(830\) 625-7159](tel:8306257159)

1687 Business Loop 35 S , New Braunfels, TX 78130

Photos

Details

Contact



### Specifications:

<b>Year:</b>	2012
<b>VIN:</b>	<a href="#">1FT8W3AT1CEB15435</a>
<b>Make:</b>	Ford
<b>Model/Trim:</b>	Super Duty F-350 SRW Pickup XL
<b>Condition:</b>	Pre-Owned
<b>Body:</b>	Pickup Truck

<b>Exterior:</b>	White
<b>Engine:</b>	6.7L 32-VALVE PWR STROKE V8 TURBO DIESEL ENGINE
<b>Interior:</b>	Gray
<b>Mileage:</b>	206,214
<b>Drivetrain:</b>	Rear Wheel Drive

## Vehicle Description

# Installed Options

## Interior

- Air conditioning
- HD vinyl 40/20/40 split bench front seat -inc: center armrest, cupholder, storage
- (2) aux pwr outlets in instrument panel - (4) air registers w/positive shut-off
- 3-blink lane change signal- Black vinyl full-floor covering- Color-keyed cloth headliner
- Color-keyed molded door trim panel-inc: hard armrest, grab handle, reflector
- Color-keyed scuff plates- Dash-top tray- Driver & front passenger grab handles
- Driver manual lumbar support- Dual color-keyed coat hooks
- Dual color-keyed vinyl sunvisors-inc: driver-side pocket, passenger-side mirror insert
- Front door operated dome lamp w/time delay off & IP switch
- Front passenger-side roof ride handle- Front/rear map lamps- Glove box
- Instrument panel mounted storage
- Multifunction switch message center -inc: ice blue lighting, 3-button message control on steering wheel, outside temp display
- Oil minder system
- Overhead console -inc: storage bins for garage door opener & sunglasses
- Rear seating roof ride handles- Secondary glove box- SecuriLock anti-theft ignition
- Tilt/telescoping steering column
- Vinyl 60/40 flip-up/fold-down rear split bench seat -inc: (3) head restraints

## Exterior

- (4) 17" argent painted steel wheels -inc: painted hub covers & center ornaments
- (5) LT245/75R17E all-season BSW tires- Full-size spare tire w/lock & carrier
- Black door handles- Black molded-in-color grille- Black painted rear bumper
- Black painted steel front bumper w/grained molded-in-color top cover & black lower air dam
- Box-rail & tailgate top-edge moldings- Dual beam jewel-effect headlamps
- Front fender vents- Front/rear license plate brackets
- Manual telescoping trailer tow mirrors w/manual glass- Pickup box/cargo lights
- Removable locking tailgate w/black handle & TailGate Assist - Solar tinted glass
- Underhood service light- Variable intermittent windshield wipers

## Safety

- Air conditioning
- HD vinyl 40/20/40 split bench front seat -inc: center armrest, cupholder, storage
- (2) aux pwr outlets in instrument panel - (4) air registers w/positive shut-off
- 3-blink lane change signal- Black vinyl full-floor covering- Color-keyed cloth headliner
- Color-keyed molded door trim panel-inc: hard armrest, grab handle, reflector
- Color-keyed scuff plates- Dash-top tray- Driver & front passenger grab handles
- Driver manual lumbar support- Dual color-keyed coat hooks
- Dual color-keyed vinyl sunvisors-inc: driver-side pocket, passenger-side mirror insert
- Front door operated dome lamp w/time delay off & IP switch
- Front passenger-side roof ride handle- Front/rear map lamps- Glove box
- Instrument panel mounted storage
- Multifunction switch message center -inc: ice blue lighting, 3-button message control on steering wheel, outside temp display
- Oil minder system
- Overhead console -inc: storage bins for garage door opener & sunglasses
- Rear seating roof ride handles- Secondary glove box- SecuriLock anti-theft ignition
- Tilt/telescoping steering column
- Vinyl 60/40 flip-up/fold-down rear split bench seat -inc: (3) head restraints

## Mechanical

- 12.5K trailer hitch receiver -inc: 2" hitch
- 6.2L SOHC 16-valve EFI NA V8 flex-fuel engine
- TorqShift 6-speed automatic transmission w/tow/haul mode (REQ: 996 Engine)
- (2) front tow hooks- 157-amp HD alternator- 2-ton mechanical jack
- 3.73 axle ratio (REQ: 996 Engine)
- 6-3/4' pickup box -inc: (4) tie-down hooks, partitionable & stackable storage
- 72 amp/hr (650 CCA) battery- Front stabilizer bar- HD gas shock absorbers
- Pwr steering w/steering damper- Rear wheel drive
- Stationary elevated engine idle control (SEIC)
- Trailer tow pkg -inc: 7-wire harness w/relays, 7/4 pin combination connector
- Twin I-beam front axle w/coil spring suspension

# Option Packages

## Factory Installed Packages

6.7L 32-VALVE PWR STROKE V8 TURBO DIESEL ENGINE	
-inc: 750 CCA 78-AH dual batteries, intelligent oil life minder, 14K trailer hitch receiver w/2.5" trailer hitch & 2" sleeve reducer	\$7,960

Option Packages Total	\$7,960
-----------------------	---------

Purchase prices do not include taxes, title, license, inspection or doc fee. It is the customer's sole responsibility to verify the accuracy of the price and existence and condition of any equipment listed. Dealer is not responsible for any typographical, technical or misprint errors on prices or equipment. This site and all information and materials appearing on it, are presented to the user "as is" without warranty of any kind, either express or implied. Mileage posted may vary slightly due to local test driving, in-transit repairs or road testing. Pricing subject to change without notice. All vehicles are subject to prior sale.

Randy Adams Inc.

View this car on our website at [randyadamsinc.com/6780080](https://randyadamsinc.com/6780080)

Website: [randyadamsinc.com](https://randyadamsinc.com)

Phone: (830) 625-7159

Map: [1687 Business Loop 35 S, New Braunfels, TX 78130](#)

