

2016 Jeep Wrangler Sahara 2 Door Hardtop Automatic One Owner Navigati

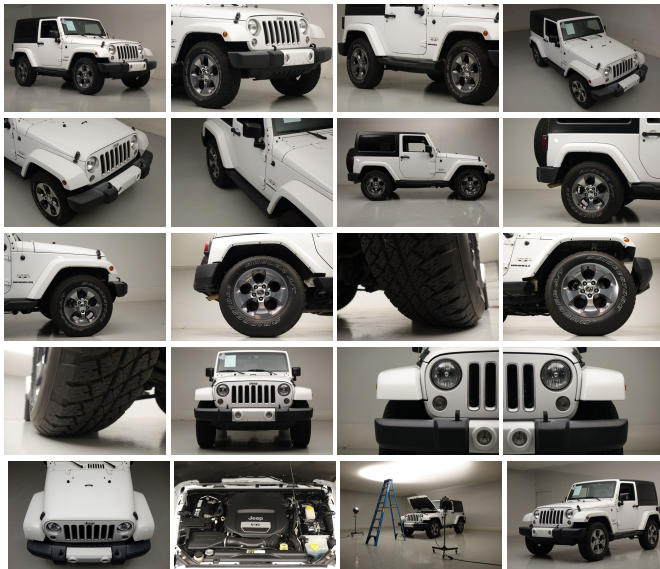
View this car on our website at shawneemotors.com/6779505/ebrochure



Our Price **\$25,950**

Specifications:

Year:	2016
VIN:	1C4AJWBG6GL110753
Make:	Jeep
Stock:	2518
Model/Trim:	Wrangler Sahara 2 Door Hardtop Automatic One Owner Navigati
Condition:	Pre-Owned
Body:	SUV
Exterior:	Bright White Clearcoat
Engine:	ENGINE: 3.6L V6 24V VVT
Interior:	Black Cloth
Transmission:	TRANSMISSION: 5-SPEED AUTOMATIC (W5A580)
Mileage:	35,946
Drivetrain:	4 Wheel Drive
Economy:	City 17 / Highway 21



Pure and simple. This 2016 Jeep Wrangler Sahara two door harkens back to easier time. The nearly new Bridgestone tires are the same size as what this Jeep left the factory on. The suspension is stock with no lift kit. You forget just how tightly a two door Jeep Wrangler can turn. The factory hard top consists of three removable pieces. The two panels over the front seats are very easy to remove while the back portion takes more effort. Please review the clean one owner Carfax report included with our listing.

Vehicle History Report : as Of 04/04/2020

 Snapshot

2016 JEEP WRANGLER SAHARA

	No accidents reported to CARFAX
	No damage reported to CARFAX
	CARFAX 1-Owner vehicle
	6 Service history records
	Personal vehicle
	35,946 Last reported odometer reading



FREE CARFAX Report

See the full CARFAX Report for additional information

*carfax Snapshot is a reflection of available information on the date the report was pulled. carfax is constantly being updated with new information and is subject to change at any time.

Our Location :



2016 Jeep Wrangler Sahara 2 Door Hardtop Automatic One Owner Navigati
Shawnee Motor Company - (214) 350-2931 - View this car on our website at shawneemotors.com/6779505/ebrochure

Installed Options

Interior

- 2 12V DC Power Outlets- 2 12V DC Power Outlets and 1 AC Power Outlet
- 2 Seatback Storage Pockets
- 4-Way Passenger Seat -inc: Manual Recline, Fore/Aft Movement and Manual Rear Seat Easy Entry
- 6-Way Driver Seat -inc: Manual Recline, Height Adjustment and Fore/Aft Movement
- Analog Display- Carpet Floor Trim, Carpet And Rubber Mat
- Cloth Seats w/Adjustable Head Restraints- Compass
- Cruise Control w/Steering Wheel Controls- Day-Night Auto-Dimming Rearview Mirror
- Delayed Accessory Power- Driver And Passenger Visor Vanity Mirrors
- Fade-To-Off Interior Lighting- Front Center Armrest w/Storage- Front Cupholder
- Front Map Lights- Full Carpet Floor Covering -inc: Carpet Front Floor Mats
- Full Floor Console w/Locking Storage, 2 12V DC Power Outlets and 1 AC Power Outlet
- Gauges -inc: Speedometer, Odometer, Engine Coolant Temp, Tachometer, Trip Odometer and Trip Computer
- Instrument Panel Bin, Dashboard Storage, Driver And Passenger Door Bins
- Interior Trim -inc: Deluxe Sound Insulation, Metal-Look Instrument Panel Insert, Metal-Look Door Panel Insert and Metal-Look Interior Accents
- Leather Wrapped Steering Wheel- Leather/Chrome Gear Shift Knob
- Locking Cargo Area Concealed Storage- Locking Glove Box
- Manual Adjustable Front Head Restraints and Fixed Rear Head Restraints
- Manual Air Conditioning- Manual Tilt Steering Column- Outside Temp Gauge
- Perimeter Alarm- Power 1st Row Windows w/Driver And Passenger 1-Touch Down
- Power Door Locks w/Autolock Feature- Rear Cupholder
- Remote Keyless Entry w/Integrated Key Transmitter, Illuminated Entry and Panic Button
- Removable Full Folding Bench Front Facing Tumble Forward Rear Seat
- Removable Rear Windows- Sentry Key Engine Immobilizer- Trip Computer

Exterior

- Aluminum Spare Wheel- Black Door Handles- Black Front Bumper w/2 Tow Hooks
- Black Power Heated Side Mirrors w/Manual Folding- Black Rear Bumper w/1 Tow Hook
- Black Side Windows Trim- Body-Colored Fender Flares- Clearcoat Paint
- Conventional Rear Cargo Access- Convertible w/Fixed Roll-Over Protection
- Deep Tinted Glass- Front Fog Lamps- Full-Size Spare Tire Mounted Outside Rear
- Fully Automatic Aero-Composite Halogen Headlamps- Fully Galvanized Steel Panels
- Removable Rear Window- Side Steps- Sunrider Soft Top
- Tailgate/Rear Door Lock Included w/Power Door Locks
- Tires: P255/70R18 OWL On/Off Road- Variable Intermittent Wipers
- Wheels: 18" x 7.5" Polished Satin Carbon

Safety

- 2 12V DC Power Outlets- 2 12V DC Power Outlets and 1 AC Power Outlet
- 2 Seatback Storage Pockets
- 4-Way Passenger Seat -inc: Manual Recline, Fore/Aft Movement and Manual Rear Seat Easy Entry
- 6-Way Driver Seat -inc: Manual Recline, Height Adjustment and Fore/Aft Movement
- Analog Display- Carpet Floor Trim, Carpet And Rubber Mat
- Cloth Seats w/Adjustable Head Restraints- Compass
- Cruise Control w/Steering Wheel Controls- Day-Night Auto-Dimming Rearview Mirror
- Delayed Accessory Power- Driver And Passenger Visor Vanity Mirrors
- Fade-To-Off Interior Lighting- Front Center Armrest w/Storage- Front Cupholder
- Front Map Lights- Full Carpet Floor Covering -inc: Carpet Front Floor Mats
- Full Floor Console w/Locking Storage, 2 12V DC Power Outlets and 1 AC Power Outlet
- Gauges -inc: Speedometer, Odometer, Engine Coolant Temp, Tachometer, Trip Odometer and Trip Computer
- Instrument Panel Bin, Dashboard Storage, Driver And Passenger Door Bins
- Interior Trim -inc: Deluxe Sound Insulation, Metal-Look Instrument Panel Insert, Metal-Look Door Panel Insert and Metal-Look Interior Accents
- Leather Wrapped Steering Wheel- Leather/Chrome Gear Shift Knob
- Locking Cargo Area Concealed Storage- Locking Glove Box
- Manual Adjustable Front Head Restraints and Fixed Rear Head Restraints
- Manual Air Conditioning- Manual Tilt Steering Column- Outside Temp Gauge
- Perimeter Alarm- Power 1st Row Windows w/Driver And Passenger 1-Touch Down
- Power Door Locks w/Autolock Feature- Rear Cupholder
- Remote Keyless Entry w/Integrated Key Transmitter, Illuminated Entry and Panic Button
- Removable Full Folding Bench Front Facing Tumble Forward Rear Seat
- Removable Rear Windows- Sentry Key Engine Immobilizer- Trip Computer

Mechanical

- 160 Amp Alternator- 18.6 Gal. Fuel Tank- 2 Skid Plates- 3.21 Rear Axle Ratio
- 4-Wheel Disc Brakes w/4-Wheel ABS, Front And Rear Vented Discs, Brake Assist and Hill Hold Control
- 50 State Emissions- 600CCA Maintenance-Free Battery- 880# Maximum Payload
- Auto Locking Hubs- Brake Actuated Limited Slip Differential- Engine Oil Cooler
- Engine: 3.6L V6 24V VVT- Front And Rear Anti-Roll Bars- GVWR: 5,000 lbs
- HD Shock Absorbers- Heavy Duty Suspension w/Gas Shocks
- Hydraulic Power-Assist Steering- Leading Link Front Suspension w/Coil Springs
- Manual Transfer Case- Part-Time Four-Wheel Drive- Single Stainless Steel Exhaust
- Towing Equipment -inc: Trailer Sway Control
- Trailing Arm Rear Suspension w/Coil Springs- Transmission: 6-Speed Manual (NSG370)

Option Packages

Factory Installed Packages

ENGINE: 3.6L V6 24V VVT

TRANSMISSION: 5-SPEED AUTOMATIC (W5A580)

-inc: Tip Start, Hill Descent Control \$1,350

AIR CONDITIONING W/AUTO TEMP CONTROL

-inc: Humidity Sensor, Air Filtering \$395

-
BLACK 3-PIECE HARD TOP

-inc: Freedom Panel Storage Bag, Rear Window Defroster, Rear Window Wiper/Washer, Delete Sunrider Soft Top **\$995**

-
RADIO: 430N

-inc: 6.5" Touchscreen Display, Remote USB Port, 5-Year SiriusXM Travel Link Service, 40GB Hard Drive w/28GB Available, GPS Navigation, SiriusXM Travel Link **\$1,195**

-
QUICK ORDER PACKAGE 24G

-inc: Engine: 3.6L V6 24V VVT, Transmission: 5-Speed Automatic (W5A580), Body Color/Accent Color Grille, Body Color Appliques Front Bumper, Body Color Appliques Rear Bumper

-
STANDARD PAINT

-
BRIGHT WHITE CLEARCOAT

-
BLACK, CLOTH SEATS W/ADJUSTABLE HEAD RESTRAINTS

-
WHEELS: 18" X 7.5" 7-SPOKE POLISHED ALUMINUM

\$745

-
Option Packages Total

\$4,680

Shawnee Motor Company

shawneemotors.com

(214) 350-2931

3250 Oradell Ln

Dallas, Texas 75220

© 2020 AutoRevo - All rights reserved. - Powered by AutoRevo