



## 2017 Chevrolet Equinox LS

**Our Price \$17,770**

View this vehicle on our website at [parksdeals.com](http://parksdeals.com)

Parks Chevrolet, Inc.

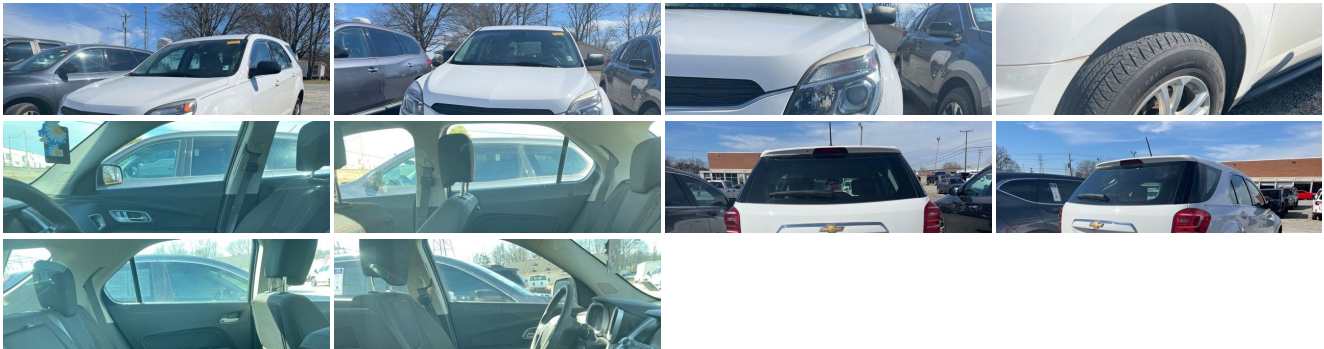
[833-825-2763](tel:833-825-2763)

615 NC-66 South, Kernersville, NC 27284

[Photos](#)

[Details](#)

[Contact](#)



### Specifications:

Year:	2017
VIN:	<a href="#">2GNFLEEK7H6155082</a>
Make:	Chevrolet

<b>Stock:</b>	7K6048B
<b>Model/Trim:</b>	Equinox LS
<b>Condition:</b>	Pre-Owned
<b>Body:</b>	SUV
<b>Exterior:</b>	Summit White
<b>Engine:</b>	ENGINE, 2.4L DOHC 4-CYLINDER SIDI (SPARK IGNITION DIRECT INJECTION)
<b>Interior:</b>	Jet Black Cloth
<b>Mileage:</b>	96,500
<b>Drivetrain:</b>	All Wheel Drive
<b>Economy:</b>	City 20 / Highway 28

## Vehicle Description

Parks Chevrolet in Kernersville, NC ! We offer low payment - easy financing on everything ! We sell in volume and that saves you money!!

2017 Summit White Chevrolet Equinox Clean CARFAX. AWD.

\$1000 - Dealer Trade-in Allowance (Must own and trade a 2014 or newer passenger vehicle to qualify for the Dealer Trade-in Allowance), Allowance is \$1000 above True Car Cash Offer. This offer is based on the current condition of the vehicle and must be appraised at the Dealership to receive the Trade-In Allowance. \$1000 - Dealer Finance Discount (Must qualify and finance with GM Financial, not available with special financing rates or programs.) Price does not include tax, tag, and fees.

### Installed Options

#### Interior

- Seats, Deluxe front bucket - Interior, Premium Cloth
- Seat adjuster front driver power lumbar and 2-way power height adjuster
- Floor mats, carpeted front- Floor mats, carpeted rear
- Steering wheel, comfort grip vinyl with mounted cruise and audio controls
- Steering wheel controls, mounted audio controls
- Driver Information Center monitors 26 various systems including, Vehicle Information Menu (oil life, tire pressure, standard/metric units), Trip Information Menu (trip 1, trip 2, fuel range, average fuel economy, instant fuel economy, average vehicle speed) and compass display
- Door locks, power programmable with power lockout protection
- Remote Keyless Entry with 2 transmitters, panic button, content theft alarm activation verification and illuminated entry
- Cruise control, electronic with set and resume speed
- Theft-deterrent system, anti-theft alarm and engine immobilizer
- Seat, rear, 2-way fore/aft adjustment with 60/40 split seatback and 3-way recline
- Console, front center with armrest and concealed storage
- Armrest, rear center with dual cup holders - Steering column, tilt and telescopic
- Instrumentation includes speedometer, single trip odometer, fuel level, engine temperature and tachometer
- Compass display included in Driver Information Center (DIC)
- Windows, power with Express-Down on all 4 doors
- Air conditioning, manual climate control- Defogger, rear-window electric
- Cupholders, 2 front in center console and 2 rear in center armrest with 1 bottle holder in each door
- Power outlets, 4 auxiliary with covers, 12-volt includes 1 front of console, 1 in console, 1 in back of console and 1 in cargo area
- Mirror, inside rearview manual day/night
- Visors, driver and front passenger illuminated vanity mirrors
- Assist handles, front passenger and rear outboards
- Map pocket, front seatback, driver and front passenger
- Lighting, interior with theatre dimming, center-mounted dome, rear cargo area, dual front map lights, ambient lighting on center stack surround, and center console cupholders

#### Exterior

- Wheels, 17" (43.2 cm) aluminum (1LG26 AWD model only.)
- LS Exterior Appearance includes body-color bumpers with Charcoal lowers, body-color door handles, 17" aluminum wheels and Black mirrors
- Tires, P225/65R17 all-season, blackwall (Included and only available with (RSB) 17" (43.2 cm) aluminum wheels or (RVF) 17" (43.2 cm) aluminum wheels.)
- Tire, compact spare with steel wheel- Bumpers, body-color with Charcoal lowers
- Moldings, Charcoal lower rocker- Rocker moldings, door mounted, Charcoal

### Option Packages

#### Factory Installed Packages

ENGINE, 2.4L DOHC 4-CYLINDER SIDI (SPARK IGNITION DIRECT INJECTION)  
with VVT (Variable Valve Timing) (182 hp [135.7 kW] @ 6700 rpm, 172 lb-ft [232.2 N-m] @ 4900 rpm)

- Grille, Black with chrome surround- Headlamps, halogen projector style- Glass, tinted
- Mirrors, outside power-adjustable, Black, manual-folding
- Wipers, front variable-speed, intermittent with washer
- Wiper, rear variable-speed, intermittent with washer
- Liftgate, rear manual with fixed glass- Door handles, body-color

## Safety

- Seats, Deluxe front bucket - Interior, Premium Cloth
- Seat adjuster front driver power lumbar and 2-way power height adjuster
- Floor mats, carpeted front- Floor mats, carpeted rear
- Steering wheel, comfort grip vinyl with mounted cruise and audio controls
- Steering wheel controls, mounted audio controls
- Driver Information Center monitors 26 various systems including, Vehicle Information Menu (oil life, tire pressure, standard/metric units), Trip Information Menu (trip 1, trip 2, fuel range, average fuel economy, instant fuel economy, average vehicle speed) and compass display
- Door locks, power programmable with power lockout protection
- Remote Keyless Entry with 2 transmitters, panic button, content theft alarm activation verification and illuminated entry
- Cruise control, electronic with set and resume speed
- Theft-deterrent system, anti-theft alarm and engine immobilizer
- Seat, rear, 2-way fore/aft adjustment with 60/40 split seatback and 3-way recline
- Console, front center with armrest and concealed storage
- Armrest, rear center with dual cup holders - Steering column, tilt and telescopic
- Instrumentation includes speedometer, single trip odometer, fuel level, engine temperature and tachometer
- Compass display included in Driver Information Center (DIC)
- Windows, power with Express-Down on all 4 doors
- Air conditioning, manual climate control- Defogger, rear-window electric
- Cupholders, 2 front in center console and 2 rear in center armrest with 1 bottle holder in each door
- Power outlets, 4 auxiliary with covers, 12-volt includes 1 front of console, 1 in console, 1 in back of console and 1 in cargo area
- Mirror, inside rearview manual day/night
- Visors, driver and front passenger illuminated vanity mirrors
- Assist handles, front passenger and rear outboards
- Map pocket, front seatback, driver and front passenger
- Lighting, interior with theatre dimming, center-mounted dome, rear cargo area, dual front map lights, ambient lighting on center stack surround, and center console cupholders

## Mechanical

- Transmission, 6-speed automatic with overdrive
- Engine, 2.4L DOHC 4-cylinder SIDI (Spark Ignition Direct Injection) with VVT (Variable Valve Timing) (182 hp [135.7 kW] @ 6700 rpm, 172 lb-ft [232.2 N-m] @ 4900 rpm)
- Axle, 3.53 final drive ratio (Requires 1LG26 model and (LEA) 2.4L DOHC 4-cylinder SIDI engine.)
- GVWR, 5070 lbs (2300 kg) (Requires all-wheel drive vehicles and (LEA) 2.4L DOHC 4-cylinder SIDI engine.)
- E10 Fuel capable, for 2.4L DOHC 4-cylinder engine (May be upgraded to (FHS) E85 FlexFuel Capable with (FE9) Federal emissions.)
- Chassis, all-wheel drive (1LG26 model only.)
- Battery, maintenance free with rundown protection, 525 CCA- Alternator, 120 amps
- Suspension, front independent MacPherson strut with stabilizer bar, optimally-tuned shocks and hydraulic-ride bushings in front control arms
- Suspension, rear independent multi-link with hydraulic rear trailing arm links and stabilizer bar
- Suspension, Refined Ride- Steering, power-assist, electric-variable
- Brakes, 4-wheel antilock, 4-wheel disc- Exhaust, single

Parks Chevrolet, Inc.

Parks Chevrolet, Inc.

View this car on our website at [parksdeals.com/6777239](https://parksdeals.com/6777239)

Website: [parksdeals.com](https://parksdeals.com)

Phone: 833-825-2763

Map: 615 NC-66 South, Kernersville, NC 27284

