



2017 Chevrolet Cruze LT

Khristian Cayias

Our Price \$12,971

View this vehicle on our website at gpmotorz.com

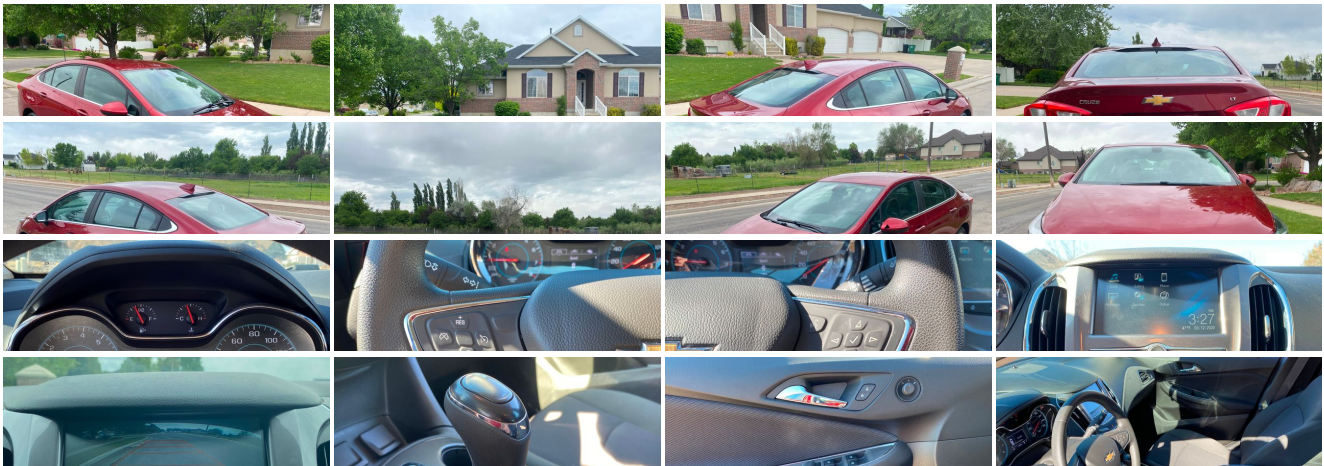
GP Motor Company

420 N Kays Dr , Kaysville, UT 84037

Photos

Details

Contact





Specifications:

Year:	2017
VIN:	3G1BE5SM9HS520511
Make:	Chevrolet
Stock:	520511
Model/Trim:	Cruze LT
Condition:	Pre-Owned
Body:	Sedan
Exterior:	Cajun Red Tintcoat
Engine:	ENGINE, 1.4L TURBO DOHC 4-CYLINDER DI
Interior:	Jet Black Cloth
Mileage:	23,117
Drivetrain:	Front Wheel Drive
Economy:	City 30 / Highway 40

Vehicle Description

Great looking, clean title Chevrolet Cruze LT for sale, this car is in great mechanical condition and runs and drives great! The Chevy Cruze is an amazing commuter car, with great fuel economy and is a blast to drive. The Cruze LT comes with tons of great features like an interactive dash display, cruise control, hands free Bluetooth calling, AM/FM radio, back up camera, power locks, power mirrors and power windows. The car does have some dings from a hailstorm it was caught in which is why I have it priced so well. Give me a call or shoot me a text if you would like to come check it out. 247A

Installed Options

Interior

- Door locks, power- Floor mats, carpeted front and rear- Remote Keyless Entry
- Remote panic alarm- Seat trim, cloth
- Seat, rear 60/40 split-folding includes center fold-down armrest with 2 cupholders
- Seats, front bucket with reclining seatbacks and adjustable head restraints
- Theft-deterrent system, unauthorized entry- Tire Pressure Display
- Visors, driver and front passenger vanity mirrors
- Air conditioning, single-zone electronic includes air filter
- Armrest, rear center, fold-down with 2 cupholders- Console, floor, with armrest
- Cruise control- Defogger, rear-window, electric
- Driver Information Center, monochromatic display
- Engine immobilizer, theft-deterrent system- Head restraints, 2-way adjustable, front
- Instrumentation, analog with mph speedometer
- Key, primary foldable, additional foldable (Deleted when (6K5) Convenience Package is ordered.)
- Lighting, interior overhead courtesy lamp and dual reading lamps
- Lighting, interior, roof, rear courtesy- Lighting, interior, trunk/cargo area
- Map pockets, driver and front passenger seatbacks
- Mirror, inside rearview manual day/night- Oil life monitoring system
- Rear air ducts, floor mounted- Seat adjuster, driver 6-way manual
- Seat adjuster, front passenger 2-way manual- Sensor, cabin humidity
- Steering column, manual tilt and telescopic
- Steering wheel controls, mounted audio and phone interface controls
- Steering wheel, 3-spoke, deluxe- Trunk release, power, remote
- Warning tones, driver and front passenger safety belts
- Windows, power with driver and front passenger Express-Down

Exterior

- Tires, 205/55R16 all-season, blackwall- Wheels, 16" (40.6 cm) aluminum
- Daytime Running Lamps, separate cavity, LED- Door handles, body-color

Option Packages

Factory Installed Packages

ENGINE, 1.4L TURBO DOHC 4-CYLINDER DI
with Continuous Variable Valve Timing (CVT)
(153 hp [114.08 kW] @ 5600 rpm, 177 lb-ft of
torque [239 N-m] @ 2000-4000 rpm)

- Glass, solar absorbing
- Headlamps, halogen dual projector with LED signature lighting with automatic on/off and delay
- Mirrors, outside heated power-adjustable, manual-folding
- Moldings, bright beltline (Not included when ordering (WBL) Redline Edition.)
- Tire, T115/70R16, blackwall, compact spare- Wheel, spare, 16" (40.6 cm) steel
- Windshield, solar absorbing Wipers, front intermittent, variable

Safety

- Door locks, power- Floor mats, carpeted front and rear- Remote Keyless Entry
- Remote panic alarm- Seat trim, cloth
- Seat, rear 60/40 split-folding includes center fold-down armrest with 2 cupholders
- Seats, front bucket with reclining seatbacks and adjustable head restraints
- Theft-deterrent system, unauthorized entry- Tire Pressure Display
- Visors, driver and front passenger vanity mirrors
- Air conditioning, single-zone electronic includes air filter
- Armrest, rear center, fold-down with 2 cupholders- Console, floor, with armrest
- Cruise control- Defogger, rear-window, electric
- Driver Information Center, monochromatic display
- Engine immobilizer, theft-deterrent system- Head restraints, 2-way adjustable, front
- Instrumentation, analog with mph speedometer
- Key, primary foldable, additional foldable (Deleted when (6K5) Convenience Package is ordered.)
- Lighting, interior overhead courtesy lamp and dual reading lamps
- Lighting, interior, roof, rear courtesy- Lighting, interior, trunk/cargo area
- Map pockets, driver and front passenger seatbacks
- Mirror, inside rearview manual day/night- Oil life monitoring system
- Rear air ducts, floor mounted- Seat adjuster, driver 6-way manual
- Seat adjuster, front passenger 2-way manual- Sensor, cabin humidity
- Steering column, manual tilt and telescopic
- Steering wheel controls, mounted audio and phone interface controls
- Steering wheel, 3-spoke, deluxe- Trunk release, power, remote
- Warning tones, driver and front passenger safety belts
- Windows, power with driver and front passenger Express-Down

Mechanical

- Transmission, 6-speed automatic- Alternator, 130 amps- Axle, 3.14 ratio
- Battery, 80AH- Brake lining, high-performance, noise and dust performance
- Brake, parking, manual, foot apply- Brakes, 4-wheel disc, 4-wheel antilock, Duralife
- Coolant protection, engine- Engine control, stop-start system
- Engine, 1.4L turbo DOHC 4-cylinder DI with Continuous Variable Valve Timing (CVVT) (153 hp [114.08 kW] @ 5600 rpm, 177 lb-ft of torque [239 N-m] @ 2000-4000 rpm)
- Front wheel drive- Steering, power, electric rack-mounted, reduced travel
- Suspension, front MacPherson strut- Suspension, rear, compound crank

GP Motor Company

GP Motor Company

View this car on our website at gpmotorz.com/6777078

Website: gpmotorz.com

Phone:

Map: [420 N Kays Dr , Kaysville, UT 84037](#)

