



2011 BMW X5 xDrive35i Premium

Website Price \$18,995

View this vehicle on our website at autoparkdallas.com



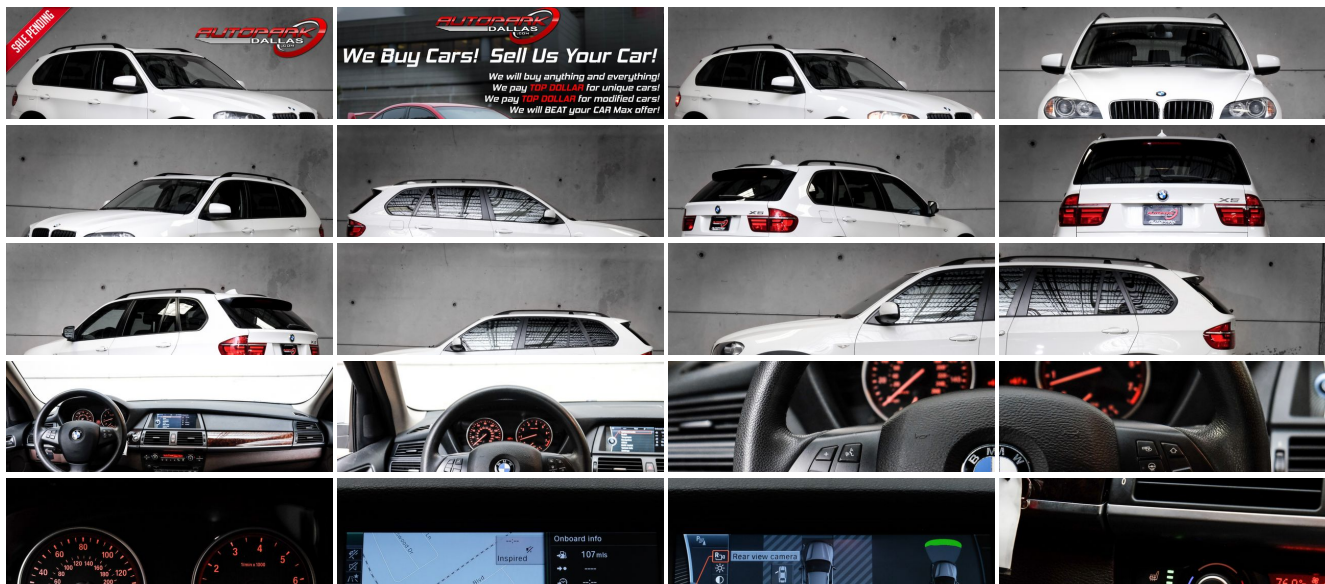
(214) 945-2601

2061 S Stemmons Fwy , Lewisville, TX 75067

Photos

Details

Contact



Specifications:

Year:	2011
VIN:	5UXZV4C59BL412683
Make:	BMW
Model/Trim:	X5 xDrive35i Premium
Condition:	Pre-Owned
Body:	SUV
Exterior:	Alpine White
Engine:	3.0-liter, 300-horsepower, 24-valve inline 6-cylinder dual overhead cam (DOHC) engine with TwinPower Turbo technology, Valvetronic, piezo direct fuel injection, and Double-VANOS steplessly variable valve timing
Interior:	Cinnamon Brown Leather
Transmission:	8-speed Sport Automatic transmission with Adaptive Transmission Control (ATC), Sport and steptronic Manual shift modes, and steering wheel-mounted paddle shifters
Mileage:	47,984
Drivetrain:	All Wheel Drive
Economy:	City 16 / Highway 23

Vehicle Description

AutoPark Dallas is excited to offer you this 2011 BMW X5 xDrive35i Premium for sale! The BMW enjoys a well-deserved reputation for bundling outstanding driving dynamics, excellent quality and undeniable prestige into gorgeous piece of metal. There is no denying that everybody knows the signature look of a BMW, which this X5 doesn't let that reputation down. These are a beautiful piece of machinery that can make anybody feel important on the road and to their peers! Stop by to check out this BMW X5 parked in our indoor 16,000 Sq Ft Showroom located in Dallas , Texas amongst our inventory of 100+ other Performance / Modified and Luxury cars!

2011 BMW X5 xDrive35i Premium

*** 1 OWNER !***

*** Rear Entertainment System !***

Alpine White Exterior

Cinnamon Brown Leather Interior

*** Custom Gloss Black X5 Wheels !***

Hands Free Bluetooth

Navigation w/ Voice Command

Heated Front Row Seats

Dual Climate Controls

Front & Rear Reverse Sensors

Cruise Control

Daytime Running Lights

Bluetooth Audio Streaming

Panoramic Moonroof

Steering Wheel Mounted Controls

Heated Steering Wheel

Powered Tailgate

3.0L 24-valve TwinPower Turbo Inline 6-Cyl DOHC Engine

8-Speed Automatic Transmission

All Wheel Drive

Professionally Detailed!

Well Maintained!

* Free CarFax Report !*

AND SO MUCH MORE!!!

Financing is available!

Check out our Payment Calculator to get an estimate on your monthly payments!

OR

Get pre-approved in no time by filling out a credit application on the 'Finance' section of our website!

We also offer MANY different Extended Warranty options!

Check out our Google Reviews by *Clicking* this LINK!

Referrals and Testimonials is what our business is built on!

The team here at AutoPark Dallas, is dedicated to offering a level of customer service not usually found in the automobile industry. Thanks to years of extensive car buying / selling experience, we pursue quality used and new vehicles that are hand-picked from factory sources. Our love for automobiles and dislike of traditional dealership tactics is what motivates us to provide the service we do! The pride we take in continuing this service long after the vehicle has been delivered is what we strive for! Looking forward to making every effort to see that our customer is completely satisfied and a friend for life!

Pre-purchase inspections are always welcomed!

We also offer airport pick-up, competitive financing options, free CarFax Reports, Car Shipping nationwide, Extended Warranty plans, and so much more!

Trade-In(s) are always accepted or sell us your used car (MODIFIED OR NOT)! Please call or text for more information about Trade-Ins or selling your car to us @ (214) 945-2601!

#(214) 945-2601

Call or Text **Anytime!**

Se habla Español

WE BUY CARS!

WWW.AUTOPARKDALLAS.COM

Installed Options

Interior

- 10-way power-adjustable driver and passenger bucket seats and memory system for driver seat, steering wheel and outside mirrors
- Active Head Restraints in front seats- Active-charcoal micro-filter ventilation
- Automatic front climate control with separate left/right temperature settings, automatic air conditioning and recirculation control
- Auxiliary pwr outlet

Option Packages

Factory Installed Packages

3-STAGE HEATED FRONT SEATS	
-inc: fast heating, 4-zone balance control	\$500

BMW ON-BOARD NAVIGATION SYSTEM	
-inc: 8" display, expanded iDrive system	\$1,000

- Central locking system with center console switch (leaves gas filler door unlocked), double-lock feature and 2-step unlocking
- Dark Burl Walnut Wood trim- Dual cupholders front and rear
- Dual front sun visors with illuminated mirrors - Dynamic Cruise Control
- Electronic analog instrumentation with LED illumination
- Front-seat center console with armrest, storage compartment, and auxiliary input
- Fully finished cargo area with velour carpeting- Keyless entry w/remote trunk release
- Nevada Leather upholstery- Outside-temperature display
- Power tilt/telescopic leather-wrapped multi-function steering wheel
- Power windows with key-off operation, "one-touch" opening and closing of all door windows, anti-trapping feature
- Power-adjustable steering column- Rear-seat center armrest- Rear-window defroster
- Service Interval Indicator and Check Control vehicle monitor- Split folding rear seats
- Vehicle & Key Memory
- iDrive system with on-board computer and Controller, and 6 programmable memory buttons

Exterior

- Adaptive Brake Lights- Automatic headlights
- Automatic tilt-down of right outside mirror for visibility of curb when backing up
- Body-color exterior door and tailgate handles- Dual power outside mirrors
- Halogen free-form foglights with Cornering Lights function
- Intermittent rain-sensing windshield wipers with adjustable and vehicle-speed-sensitive wiping interval, single-wipe control, windshield-washer system with heated washer jets
- Matte black roof rails- Metallic paint
- Panoramic moonroof with 2-piece glass panel, power slide and lift control, wind deflector and electric interior sunshade
- Privacy glass in rear windows
- Rear-window wiper/washer with adjustable wiping interval
- Star Spoke (Style 334) 19 x 9.0 light alloy wheels and 255/50 run-flat all-season tires
- Xenon Adaptive Headlights with auto-leveling and Corona headlight-rings

Safety

- 10-way power-adjustable driver and passenger bucket seats and memory system for driver seat, steering wheel and outside mirrors
- Active Head Restraints in front seats- Active-charcoal micro-filter ventilation
- Automatic front climate control with separate left/right temperature settings, automatic air conditioning and recirculation control
- Auxiliary pwr outlet
- Central locking system with center console switch (leaves gas filler door unlocked), double-lock feature and 2-step unlocking
- Dark Burl Walnut Wood trim- Dual cupholders front and rear
- Dual front sun visors with illuminated mirrors - Dynamic Cruise Control
- Electronic analog instrumentation with LED illumination
- Front-seat center console with armrest, storage compartment, and auxiliary input
- Fully finished cargo area with velour carpeting- Keyless entry w/remote trunk release
- Nevada Leather upholstery- Outside-temperature display
- Power tilt/telescopic leather-wrapped multi-function steering wheel
- Power windows with key-off operation, "one-touch" opening and closing of all door windows, anti-trapping feature
- Power-adjustable steering column- Rear-seat center armrest- Rear-window defroster
- Service Interval Indicator and Check Control vehicle monitor- Split folding rear seats
- Vehicle & Key Memory
- iDrive system with on-board computer and Controller, and 6 programmable memory buttons

Mechanical

- 3.0-liter, 300-horsepower, 24-valve inline 6-cylinder dual overhead cam (DOHC) engine with TwinPower Turbo technology, Valvetronic, piezo direct fuel injection, and Double-VANOS steplessly variable valve timing
- 4-wheel anti-lock ventilated disc brakes, electronic front/rear proportioning
- 8-speed Sport Automatic transmission with Adaptive Transmission Control (ATC), Sport and steptronic Manual shift modes, and steering wheel-mounted paddle shifters
- Brake Energy Regeneration to convert kinetic energy into usable electrical power
- Chrome exhaust tips- Double wishbone front suspension
- Engine-speed-sensitive power steering- Lightweight multi-link integral rear suspension
- Pre-wiring for trailer hitch- xDrive all-wheel-drive system

-inc: 8.8" display, expanded iDrive system, controller w/force feedback, voice activation system, real time traffic info w/dynamic re-routing, expanded on-board computer functions, auto ventilation, online information services

\$1,900

PARK DISTANCE CONTROL

\$750

PREMIUM HI-FI SYSTEM

\$1,200

REAR SEAT ENTERTAINMENT SYSTEM

-inc: DVD player, 8" screen

\$1,700

RUNNING BOARDS

\$300

SIDE-VIEW CAMERA

\$300

ALPINE WHITE

STANDARD PAINT

CINNAMON BROWN, NEVADA LEATHER SEAT TRIM

Option Packages Total

\$6,650

AUTOPARK

Dallas

Auto Park Dallas

View this car on our website at autoparkdallas.com/6776995

Website: autoparkdallas.com

Phone: (214) 945-2601

Map: 2061 S Stemmons Fwy, Lewisville, TX 75067

