



2017 Chevrolet Corvette Grand Sport 1LT

Website Price \$47,995

View this vehicle on our website at autoparkdallas.com



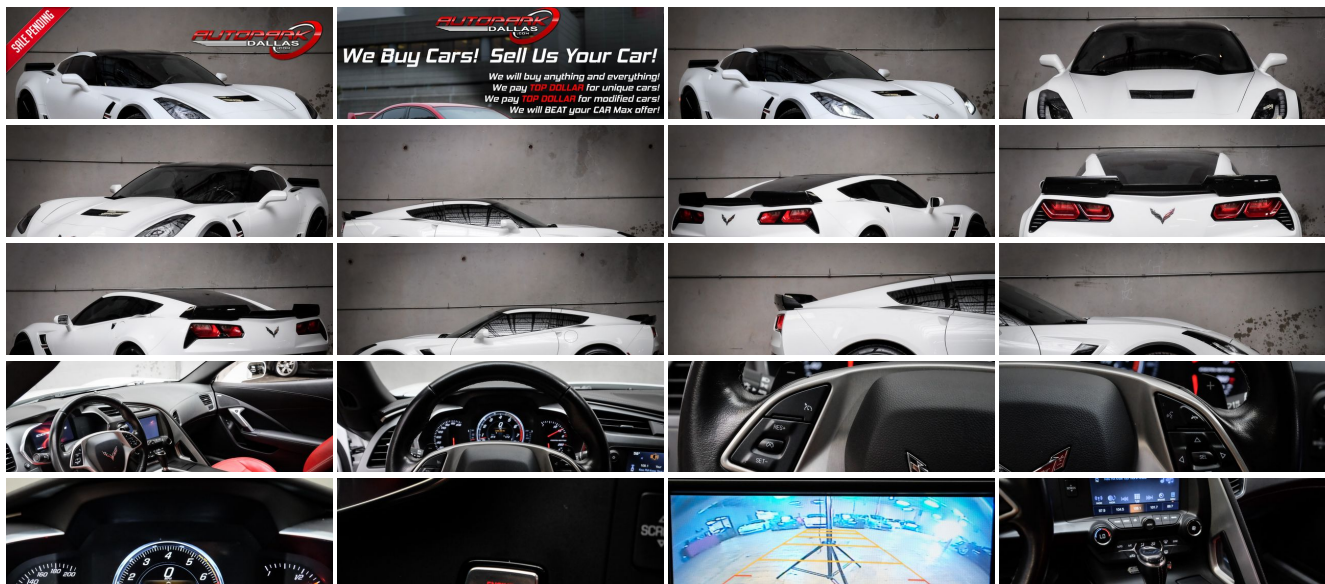
(214) 945-2601

2061 S Stemmons Fwy , Lewisville, TX 75067

Photos

Details

Contact



Specifications:

Year:	2017
VIN:	1G1YW2D7XH5121906
Make:	Chevrolet
Model/Trim:	Corvette Grand Sport 1LT
Condition:	Pre-Owned
Body:	Coupe
Exterior:	Arctic White
Engine:	ENGINE, 6.2L (376 CI) V8 DI
Interior:	Adrenaline Red Leather
Transmission:	TRANSMISSION, 8-SPEED PADDLE SHIFT WITH AUTOMATIC MODES
Mileage:	20,915
Drivetrain:	Rear Wheel Drive
Economy:	City 15 / Highway 26

Vehicle Description

AutoPark Dallas is thrilled to offer you this 2017 Chevrolet Corvette Grand Sport 1LT for sale! There is not a soul that does not know the Corvette, with its signature look and being a low-profile sport car. These bald eagle screaming U.S. born beauties are a thrill to drive and always stand out in any crowded car meet or parking lot. Our Corvette here APD was equipped well from the factory with the '1LT' Package, exterior appealing thanks to the combo between exterior color and the gloss black Rohana wheels and its all is wrapped up nicely with the elusive Magnetic Selective Ride that makes the ride! Come check out this America-Made Sport Car parked in our indoor 16,000 Sq Ft Showroom located in Dallas , Texas amongst our inventory of 100+ other Performance / Modified and Luxury cars!

2017 Chevrolet Corvette Grand Sport 1LT

Clean CarFax!

1LT Package!

Arctic White Exterior w/ Black Trim

Gloss Black Removable T-Top

Adrenaline Red Leather Interior

20" Rohana (Style: RF2) Wheels

Hands Free Bluetooth

Magnetic Selective Ride Select

Comfort Access Keyless Entry

Push Button Start

Remote Start

Back-Up Camera

Dual Climate Controls

Manual Mode w/ Paddle Shifters

CD / AUX / USB Capable

Bluetooth Audio Streaming

Android Auto & Apple CarPlay

Cruise Control

BREMBO Brakes

Steering Wheel Mounted Controls

Daytime Running Lights

BOSE Premium Sound System

6.2L V8 DI Engine

8-Speed Automatic Transmission

Rear Wheel Drive

Professionally Detailed!

Well Maintained!

* Free CarFax Report !*

AND SO MUCH MORE!!!

Financing is available!

Check out our Payment Calculator to get an estimate on your monthly payments!

OR

Get pre-approved in no time by filling out a credit application on the 'Finance' section of our website!

We also offer MANY different Extended Warranty options!

Check out our Google Reviews by *Clicking* this LINK!

Referrals and Testimonials is what our business is built on!

The team here at AutoPark Dallas, is dedicated to offering a level of customer service not usually found in the automobile industry. Thanks to years of extensive car buying / selling experience, we pursue quality used and new vehicles that are hand-picked from factory sources. Our love for automobiles and dislike of traditional dealership tactics is what motivates us to provide the service we do! The pride we take in continuing this service long after the vehicle has been delivered is what we strive for! Looking forward to making every effort to see that our customer is completely satisfied and a friend for life!

Pre-purchase inspections are always welcomed!

We also offer airport pick-up, competitive financing options, free CarFax Reports, Car Shipping nationwide, Extended Warranty plans, and so much more!

Trade-In(s) are always accepted or sell us your used car (MODIFIED OR NOT)! Please call or text for more information about Trade-Ins or selling your car to us @ (214) 945-2601!

#(214) 945-2601

Call or Text **Anytime!**

Se habla Español

WE BUY CARS!

WWW.AUTOPARKDALLAS.COM

Installed Options

. . .

Option Packages

-

Interior

- 1LT interior trim seats only in interior color selected
- Air conditioning, dual-zone automatic climate control with individual climate settings for driver and dedicated passenger controls and outside temperature display
- Air filtration system with pollen filter
- Console, floor 2 covered cup holders, auxiliary power outlet, USB ports, auxiliary input jack and storage
- Cruise control, electronic with set and resume speed - Defogger, rear-window, electric
- Door locks, power programmable with lockout protection
- Driver Information Center, color- Floor mats, carpeted
- Hatch release, push button open
- Keyless Open and Start includes 2 remote transmitters that enable automatic door unlock and open by touching door switch
- Lighting, interior with courtesy, cargo and glovebox- Oil life monitoring system
- Perforated Mulan leather seating surfaces- Seat adjusters, driver and passenger 8-way
- Seats, GT bucket- Steering column, power tilt and telescopic
- Steering wheel controls, audio, voice recognition and Driver Information Center
- Steering wheel, 3-spoke leather-wrapped, flat-bottom
- Storage, with electric locking glovebox, behind screen storage, center console and rear compartment with cover
- Theft-deterrent system, vehicle, push button start, immobilizer and audible visual alarm
- Visors, driver and passenger illuminated vanity mirrors
- Windows, power with driver and passenger Express-Down/Up

Exterior

- Tires, front P285/30ZR19 and rear P335/25ZR20 Michelin Pilot Super Sport summer-only, run-flat (Do not use summer only tires in winter conditions, as it would adversely affect vehicle safety, performance and durability. Use only GM-approved tire and wheel combinations. Unapproved combinations may change the vehicle's performance characteristics. For important tire and wheel information, see your dealer for a copy of the vehicle's owner's manual.)
- Wheels, Grand Sport Pearl Nickel-painted aluminum, 19" x 10" (48.3 cm x 25.4 cm) front and 20" x 12" (50.8 cm x 30.48 cm) rear
- Chrome Badge Package- Engine access, rear-opening hood
- Glass, Solar-Ray light-tinted
- Headlamps, high intensity discharge (HID), Xenon LED park and turn signals and Daytime Running Lamps
- Mirrors, outside heated power-adjustable, body-color
- Roof panel, carbon fiber, painted body-color, removable- Wipers, front intermittent

Safety

- 1LT interior trim seats only in interior color selected
- Air conditioning, dual-zone automatic climate control with individual climate settings for driver and dedicated passenger controls and outside temperature display
- Air filtration system with pollen filter
- Console, floor 2 covered cup holders, auxiliary power outlet, USB ports, auxiliary input jack and storage
- Cruise control, electronic with set and resume speed - Defogger, rear-window, electric
- Door locks, power programmable with lockout protection
- Driver Information Center, color- Floor mats, carpeted
- Hatch release, push button open
- Keyless Open and Start includes 2 remote transmitters that enable automatic door unlock and open by touching door switch
- Lighting, interior with courtesy, cargo and glovebox- Oil life monitoring system
- Perforated Mulan leather seating surfaces- Seat adjusters, driver and passenger 8-way
- Seats, GT bucket- Steering column, power tilt and telescopic
- Steering wheel controls, audio, voice recognition and Driver Information Center
- Steering wheel, 3-spoke leather-wrapped, flat-bottom
- Storage, with electric locking glovebox, behind screen storage, center console and rear compartment with cover
- Theft-deterrent system, vehicle, push button start, immobilizer and audible visual alarm
- Visors, driver and passenger illuminated vanity mirrors
- Windows, power with driver and passenger Express-Down/Up

Mechanical

- Transmission, 7-speed manual with Active Rev Matching with Z51 performance ratios
- Brakes, 4-wheel antilock, 4-wheel disc- Calipers, Black-painted- Cooler, rear differential
- Differential, electronic limited slip, rear- Dry sump oil system
- Engine, 6.2L (376 ci) V8 DI (460 hp [343 kW] @ 6000 rpm, 465 lb-ft of torque [627.8 N-m] @ 4600 rpm)
- Exhaust, performance aggressive exhaust sound, with 4" polished stainless-steel tips
- Frame, aluminum, structure- Rear axle, 3.42 ratio, electronic limited slip (eLSD)
- Rear wheel drive- Steering, power, speed-sensitive rack-and-pinion, variable ratio

Factory Installed Packages

ENGINE, 6.2L (376 CI) V8 DI
(460 hp [343 kW] @ 6000 rpm, 465 lb-ft of torque [627.8 N-m] @ 4600 rpm)

TRANSMISSION, 8-SPEED PADDLE SHIFT WITH AUTOMATIC MODES

\$1,725

CALIPERS, RED-PAINTED

\$595

REMOTE VEHICLE STARTER SYSTEM

SUSPENSION, Z07
with Magnetic Selective Ride Control

EMISSIONS, FEDERAL REQUIREMENTS, 50-STATE CERTIFIED

ARCTIC WHITE

STANDARD PAINT

GS 1LT PREFERRED EQUIPMENT GROUP
includes Standard Equipment

AUDIO SYSTEM, CHEVROLET MYLINK RADIO
with 8" diagonal color touch-screen, AM/FM stereo with seek-and-scan and digital clock, includes Bluetooth streaming audio for music and select phones; voice-activated technology for radio and phone; featuring Android Auto and Apple CarPlay capability for compatible phone

ADRENALINE RED, PERFORATED MULAN LEATHER SEATING SURFACES

SEATS, GT BUCKET

Option Packages Total
\$2,320

- Suspension, Performance Ride and Handling with Magnetic Selective Ride Control

AUTOPARK

Dallas

Auto Park Dallas

View this car on our website at autoparkdallas.com/6773684

Website: autoparkdallas.com

Phone: (214) 945-2601

Map: 2061 S Stemmons Fwy, Lewisville, TX 75067

