

2019 Ram 2500 Tradesman

View this car on our website at workvansandtrucks.com/6770491/ebrochure

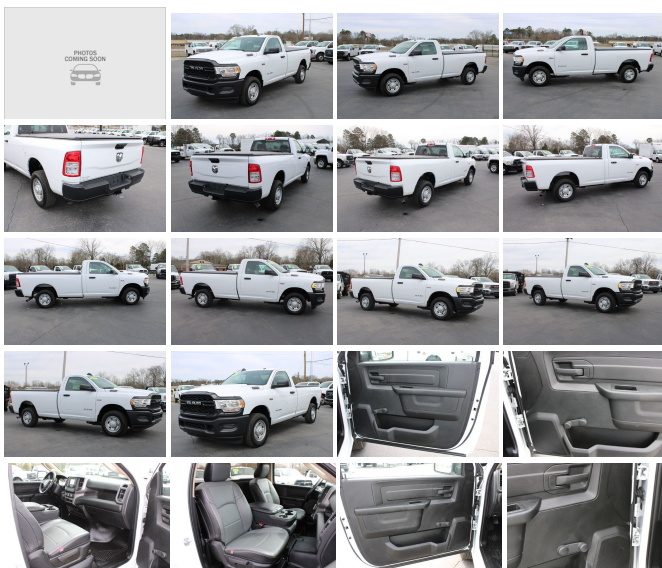


Our Price **\$0**

Retail Value ~~\$33,995~~

Specifications:

Year:	2019
VIN:	3C6MR4AJ6KG500546
Make:	Ram
Stock:	T2393
Model/Trim:	2500 Tradesman
Condition:	Pre-Owned
Body:	Pickup Truck
Exterior:	WHITE
Engine:	ENGINE: 6.4L HEAVY DUTY V8 HEMI W/MDS
Interior:	GRAY
Mileage:	5,964
Drivetrain:	Rear Wheel Drive

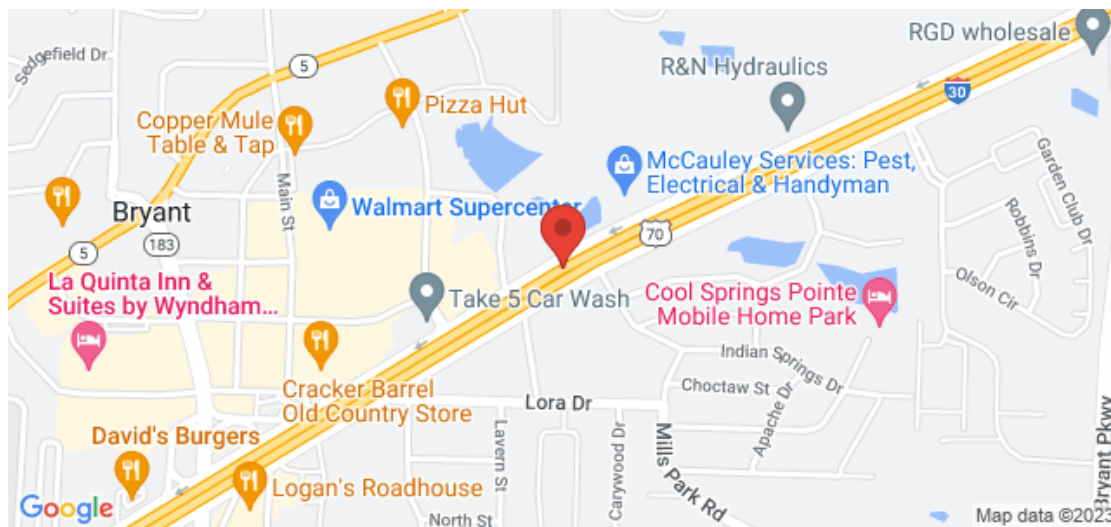


2019 RAM 2500 RAM HD TRADESMAN 4X2 REG CAB PICKUP 6.4 GAS ENGINE, AUTOMATIC TRANSMISSION, this 3/4 ton long bed work truck comes with Manual Windows, Manual Door Locks, Tilt Steering Wheel, Cruise Controls, Blue Tooth Phone Controls, Hands Free, Manual Shift Mode, Push Button Start, Gear-shift Knob, Alpine Speakers/Am/fm/xm/touch Screen Radio, Back-up Camera, Traction Control, Park Assist, Vinyl Seats, Vinyl Floor, Rear Mounted Tow Hitch, Spray-in Bed Liner, Fold up tonneau cover.

2019 Ram 2500 Tradesman

T & B Auto Sales - 501-847-2727 - View this car on our website at workvansandtrucks.com/6770491/ebrochure

Our Location :



2019 Ram 2500 Tradesman

T & B Auto Sales - 501-847-2727 - View this car on our website at workvansandtrucks.com/6770491/ebookure

Installed Options

Interior

- Driver Seat- Manual Adjust 4-Way Driver Seat- Passenger Seat
- Manual Adjust 4-Way Front Passenger Seat- Manual Tilt Steering Column
- Gauges -inc: Speedometer, Odometer, Voltmeter, Oil Pressure, Engine Coolant Temp, Tachometer, Oil Temperature, Transmission Fluid Temp, Engine Hour Meter and Trip Odometer
- Compass- Proximity Key For Push Button Start Only
- Cruise Control w/Steering Wheel Controls- Manual Air Conditioning- Glove Box
- Interior Trim -inc: Metal-Look Instrument Panel Insert and Chrome/Metal-Look Interior Accents
- Full Cloth Headliner- Urethane Gear Shifter Material
- Heavy Duty Vinyl 40/20/40 Split Bench Seat- Day-Night Rearview Mirror
- Passenger Visor Vanity Mirror- 2 12V DC Power Outlets- Front Map Lights
- Fade-To-Off Interior Lighting- Full Vinyl/Rubber Floor Covering- Pickup Cargo Box Lights
- Instrument Panel Bin, Dashboard Storage, Driver And Passenger Door Bins
- Manual 1st Row Windows- Delayed Accessory Power- Systems Monitor
- Outside Temp Gauge- Analog Display- Seats w/Vinyl Back Material
- Manual Adjustable Front Head Restraints- Armrests w/Storage
- 40/20/40 Split Bench Seat- Front Armrest w/Cupholders- Engine Immobilizer

Exterior

- Tires: LT245/70R17E BSW All-Season- Regular Box Style
- Wheels w/Silver Accents w/Hub Covers- Center Hub- Steel Spare Wheel
- Full-Size Spare Tire Stored Underbody w/Crankdown- Clearcoat Paint
- Black Front Bumper- Black Rear Step Bumper
- Black Side Windows Trim and Black Front Windshield Trim - Black Door Handles
- Black Manual Side Mirrors w/Manual Folding- Fixed Rear Window- Light Tinted Glass
- Variable Intermittent Wipers- Galvanized Steel/Aluminum Panels- Black Grille
- Front License Plate Bracket- Tailgate Rear Cargo Access

- Manual Gate/Rear Door Lock
- Fully Automatic Aero-Composite Halogen Daytime Running Headlamps w/Delay-Off
- Cargo Lamp w/High Mount Stop Light- Wheels: 17" x 7.5" Steel Styled

Safety

- Driver Seat- Manual Adjust 4-Way Driver Seat - Passenger Seat
- Manual Adjust 4-Way Front Passenger Seat - Manual Tilt Steering Column
- Gauges -inc: Speedometer, Odometer, Voltmeter, Oil Pressure, Engine Coolant Temp, Tachometer, Oil Temperature, Transmission Fluid Temp, Engine Hour Meter and Trip Odometer
- Compass- Proximity Key For Push Button Start Only
- Cruise Control w/Steering Wheel Controls- Manual Air Conditioning- Glove Box
- Interior Trim -inc: Metal-Look Instrument Panel Insert and Chrome/Metal-Look Interior Accents
- Full Cloth Headliner- Urethane Gear Shifter Material
- Heavy Duty Vinyl 40/20/40 Split Bench Seat- Day-Night Rearview Mirror
- Passenger Visor Vanity Mirror- 2 12V DC Power Outlets- Front Map Lights
- Fade-To-Off Interior Lighting- Full Vinyl/Rubber Floor Covering- Pickup Cargo Box Lights
- Instrument Panel Bin, Dashboard Storage, Driver And Passenger Door Bins
- Manual 1st Row Windows- Delayed Accessory Power- Systems Monitor
- Outside Temp Gauge- Analog Display- Seats w/Vinyl Back Material
- Manual Adjustable Front Head Restraints- Armrests w/Storage
- 40/20/40 Split Bench Seat- Front Armrest w/Cupholders- Engine Immobilizer

Mechanical

- 4-Wheel Disc Brakes w/4-Wheel ABS, Front And Rear Vented Discs, Brake Assist and Hill Hold Control
- Multi-Link Rear Suspension w/Coil Springs- Multi-Link Front Suspension w/Coil Springs
- Single Stainless Steel Exhaust- 32 Gal. Fuel Tank- Hydraulic Power-Assist Steering
- HD Suspension- Front And Rear Anti-Roll Bars- HD Shock Absorbers
- 4050# Maximum Payload- Trailer Wiring Harness
- Class V Towing Equipment -inc: Hitch and Trailer Sway Control - Tip Start
- Electronically Controlled Throttle- 180 Amp Alternator
- 730CCA Maintenance-Free Battery w/Run Down Protection- Rear-Wheel Drive
- Transmission w/Driver Selectable Mode and Sequential Shift Control- 50 State Emissions
- GVWR: 10,000 lbs- 3.73 Axle Ratio- Transmission: 8-Speed Auto (8HP75-LCV)
- Engine: 6.4L Heavy Duty V8 HEMI w/MDS

Option Packages

Factory Installed Packages

-
ENGINE: 6.4L HEAVY DUTY V8 HEMI
W/MDS



workvansandtrucks.com

501-847-2727

25637 I-30

Bryant, AR 72022

© 2023 AutoRevo - All rights reserved. - Powered by AutoRevo