

# 2018 Chevrolet Express Commercial Cutaway WT CUTAWAY BOX TRUCK

View this car on our website at [workvansandtrucks.com/6768631/ebrochure](http://workvansandtrucks.com/6768631/ebrochure)



Our Price **\$0**

Retail Value **\$35,995**

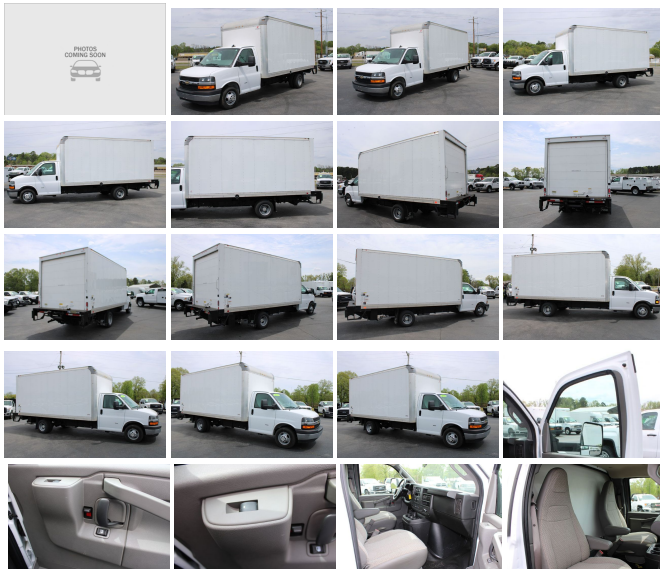
## Specifications:

<b>Year:</b>	2018
<b>VIN:</b>	1HA3GTCG8JN002887
<b>Make:</b>	Chevrolet
<b>Stock:</b>	B2385
<b>Model/Trim:</b>	Express Commercial Cutaway WT CUTAWAY BOX TRUCK
<b>Condition:</b>	Pre-Owned
<b>Exterior:</b>	WHITE
<b>Engine:</b>	ENGINE, VORTEC 6.0L V8
<b>Interior:</b>	GRAY
<b>Mileage:</b>	28,250
<b>Drivetrain:</b>	Rear Wheel Drive

2018 CHEVROLET 3500 EXPRESS WT CUTAWAY BOX TRUCK 6.0  
GAS ENGINE AUTOMATIC TRANSMISSION.

This Box Truck comes with Power Windows, Power Door Locks, Manual Mirrors, Phone Controls, Blue Tooth, Hands Free, Cruise Control, Manual Shift Mode, Traction Control, am/fm/cd/xm/radio, On-star for you saftey, charging ports, Vinyl Floor Mat, Cloth Seats, Chrome Front Bumper, Chrome Grill.

16 Foot Supreme Box, Front wall to the back door 15 foot 9 inches, the box is 7 foot 6 inches wide, Rear Rollup door, Tuck Under Maxon Rear Lift Gate 2000 lb lift Capacity.



## Our Location :



2018 Chevrolet Express Commercial Cutaway WT CUTAWAY BOX TRUCK  
T & B Auto Sales - 501-847-2727 - View this car on our website at [workvansandtrucks.com/6768631/ebrochure](http://workvansandtrucks.com/6768631/ebrochure)

## Installed Options

### Interior

- Mirror, inside rearview manual day/night (Not available with (UVC) rear vision camera.)
- Seating arrangement, driver and front passenger high-back bucket includes head restraints and vinyl or cloth trim (Not available with (AJ3) driver-side only frontal air bag.)
- Air conditioning, single-zone manual (Not available with (R6G) air conditioning delete.)
- Seats, front bucket with vinyl trim and head restraints includes inboard armrests (Requires (\*\*W) trim. Not available with SEO (ZP0) delete driver and passenger seats. Includes only driver high-back bucket seat with vinyl trim when ordered with (ZX1) driver-only high-back bucket seating arrangement.)
- Cup holders, 3 on the engine console cover
- Power outlets 2 auxiliary on engine console cover with covers, 12-volt
- Power outlet, 120-volt- Floor covering, Black rubberized-vinyl front
- Instrumentation, analog with speedometer, odometer with trip odometer, fuel level, voltmeter, engine temperature and oil pressure
- Driver Information Center includes fuel range, average speed, oil life, fuel used, ice warning, engine hours, average fuel economy, tachometer and maintenance reminders
- Warning tones, headlamp on and key-in-ignition- Oil life monitor
- Theft-deterrent system, vehicle, PASS-Key III
- Heater and defogger with front and side window defoggers
- Headliner, cloth, over driver and passenger
- Visors, driver and front passenger, cloth, padded
- Assist handles, driver and right-front passenger
- Lighting, interior with dome light and door handle-activated switches

### Exterior

- Grille, Black composite (Not available with (ZR7) Chrome Appearance Package.)
- Headlamps, dual halogen composite- Flasher, heavy duty light emitting diode (LED)
- Glass, Solar-Ray light-tinted, all windows- Mirrors, outside delete
- Wipers, front intermittent wet-arm with pulse washers
- Bumper, front painted Black with step-pad (Deleted when (ZR7) Chrome Appearance Package is ordered)

Package is ordered.)

- Wheel configuration, rear, dual (Not available with (C4M) 9900 lb. (4490 kg) GVWR or (JFF) 10,100 lb. (4581 kg) GVWR.)
- Tires, rear LT225/75R16E all-season, blackwall (Requires (R05) dual rear wheel configuration. Jack and spare tire equipment bracket are not included.)
- Tires, front LT225/75R16E all-season, blackwall (Requires (R05) dual rear wheel configuration. Jack and spare tire equipment bracket are not included.)
- Wheels, 6 - 16" x 6.5" (40.6 cm x 16.5 cm) 8-lug painted steel, heavy duty (Only available with (R05) dual rear wheel configuration)

## Safety

- Mirror, inside rearview manual day/night (Not available with (UVC) rear vision camera.)
- Seating arrangement, driver and front passenger high-back bucket includes head restraints and vinyl or cloth trim (Not available with (AJ3) driver-side only frontal air bag.)
- Air conditioning, single-zone manual (Not available with (R6G) air conditioning delete.)
- Seats, front bucket with vinyl trim and head restraints includes inboard armrests (Requires (\*\*W) trim. Not available with SEO (ZP0) delete driver and passenger seats. Includes only driver high-back bucket seat with vinyl trim when ordered with (ZX1) driver-only high-back bucket seating arrangement.)
- Cup holders, 3 on the engine console cover
- Power outlets 2 auxiliary on engine console cover with covers, 12-volt
- Power outlet, 120-volt- Floor covering, Black rubberized-vinyl front
- Instrumentation, analog with speedometer, odometer with trip odometer, fuel level, voltmeter, engine temperature and oil pressure
- Driver Information Center includes fuel range, average speed, oil life, fuel used, ice warning, engine hours, average fuel economy, tachometer and maintenance reminders
- Warning tones, headlamp on and key-in-ignition- Oil life monitor
- Theft-deterrent system, vehicle, PASS-Key III
- Heater and defogger with front and side window defoggers
- Headliner, cloth, over driver and passenger
- Visors, driver and front passenger, cloth, padded
- Assist handles, driver and right-front passenger
- Lighting, interior with dome light and door handle-activated switches

## Mechanical

- Exhaust, aluminized stainless-steel muffler and tailpipe
- Fuel tank capacity, mid-frame and approximately 33 gallons (124.9L)
- Brakes, 4-wheel antilock, 4-wheel disc- Steering, power
- Suspension, rear hypoid drive axle with multi-leaf springs
- Suspension, front independent with coil springs and stabilizer bar
- Incomplete vehicle certification- Frame, ladder-type- Alternator, 150 amps
- Battery, 600 cold-cranking amps maintenance-free with rundown protection and retained accessory power
- Cooling, external engine oil cooler- Rear wheel drive- Transmission oil cooler, external
- Tow/haul mode selector, instrument panel-mounted- GVWR, 12,300 lbs. (5579 kg)
- Body, standard- Rear Axle, 3.73 Ratio (Requires (R05) dual rear wheel configuration.)
- Transmission, 6-speed automatic, heavy-duty electronically controlled with overdrive and tow/haul mode. Includes Cruise Grade Braking, Powertrain Grade Braking, and Tap-Up/Tap-Down Driver Shift Control (Reference the Engine/Axle page for availability.)
- Engine, Vortec 6.0L V8 (341 hp [254.3 kW] @ 5400 rpm, 373 lb-ft of torque [503.6 N-m] @ 4200 rpm) (Includes external oil cooler. Requires (MYD) 6-speed heavy-duty automatic transmission. Reference the Engine/Axle page for availability.)

## Option Packages

### Factory Installed Packages

-  
ENGINE, VORTEC 6.0L V8  
(341 hp [254.3 kW] @ 5400 rpm,  
373 lb-ft of torque [503.6 N-m]  
@ 4200 rpm)

---

# T & B AUTO SALES



[workvansandtrucks.com](http://workvansandtrucks.com)

501-847-2727

25637 I-30

Bryant, AR 72022

© 2021 AutoRevo - All rights reserved. - Powered by AutoRevo