

2016 Mercedes-Benz 2500 Sprinter Vans High Roof 170 Wheelbase One Owner Off Grid Van

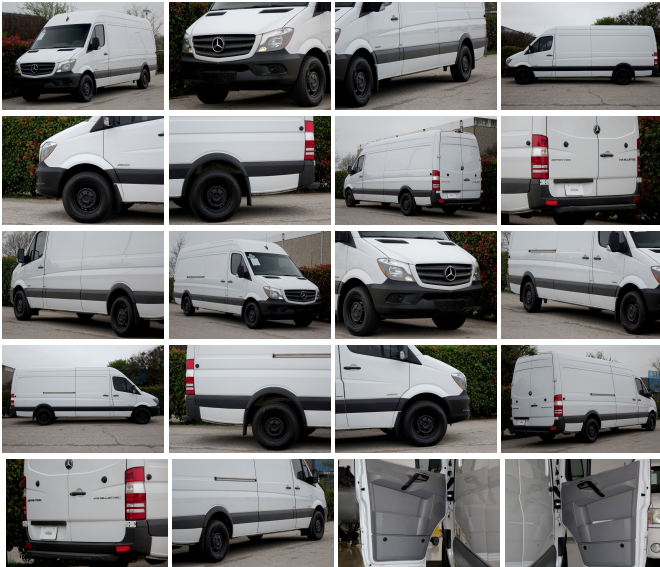
View this car on our website at shawneemotors.com/6768288/ebrochure



Our Price **\$32,950**


Specifications:

| | |
|----------------------|--|
| Year: | 2016 |
| VIN: | WD3PE8CD8GP193667 |
| Make: | Mercedes-Benz |
| Stock: | 2513 |
| Model/Trim: | 2500 Sprinter Vans High Roof 170 Wheelbase One Owner Off Grid Van |
| Condition: | Pre-Owned |
| Body: | Minivan/Van |
| Exterior: | Arctic White |
| Engine: | ENGINE: 3.0L V6 BLUETEC TURBO DIESEL |
| Interior: | Black Cloth |
| Transmission: | TRANSMISSION: 5-SPEED AUTOMATIC |
| Mileage: | 63,224 |
| Drivetrain: | Rear Wheel Drive |



Please review the clean One Owner Carfax Report included with our listing. This vehicle will have four new tires. This van is the 2500 High Roof 170 Wheelbase but NOT THE EXTENDED BODY VERSION. Ready for a future of work or play the previous owner used this van as an off the grid camper. Originally sold new in Arizona this van has spent its life in the south west United States. The underside of vehicles from the south west is so much better preserved than other parts of the country. This van has cab windows only. There are no windows in the cargo area behind the driver and front passenger front window. The best thing about a Sprinter Van is the functionality and adaptability. Bonus the new owner will get not one combo remote key but four combo remote keys!!!!

Vehicle History Report : as Of 04/04/2020

Snapshot

2016 MERCEDES-BENZ SPRINTER 2500

| | |
|---|---------------------------------------|
|  | No accidents reported to CARFAX |
|  | No damage reported to CARFAX |
|  | CARFAX 1-Owner vehicle |
|  | 8 Service history records |
|  | Personal vehicle |
|  | 63,224 Last reported odometer reading |



FREE CARFAX Report

See the full CARFAX Report for additional information

*carfax Snapshot is a reflection of available information on the date the report was pulled. carfax is constantly being updated with new information and is subject to change at any time.

Our Location :



2016 Mercedes-Benz 2500 Sprinter Vans High Roof 170 Wheelbase One Owner Off Grid Van
Shawnee Motor Company - (214) 350-2931 - View this car on our website at shawneemotors.com/6768288/ebrochure

Installed Options

Interior

- 2 12V DC Power Outlets
- 4-Way Driver Seat -inc: Manual Recline and Fore/Aft Movement
- 4-Way Passenger Seat -inc: Manual Recline and Fore/Aft Movement - Air Filtration
- Analog Display- Ashtray- Board Floor Trim
- Bucket Seats -inc: adjustable front passenger seat - Cargo Space Lights
- Day-Night Rearview Mirror- Driver And Front Passenger Armrests- Driver Foot Rest
- Engine Immobilizer- FOB Controls -inc: Trunk/Hatch/Tailgate
- Fade-To-Off Interior Lighting- Front Cigar Lighter(s)- Front Cloth Headliner
- Front Cupholder- Front Only Vinyl/Rubber Floor Covering
- Full Overhead Console w/Storage and 2 12V DC Power Outlets
- Gauges -inc: Speedometer, Odometer, Tachometer and Trip Odometer
- HVAC -inc: Residual Heat Recirculation and Supplemental Heater
- Instrument Panel Bin, Dashboard Storage, Interior Concealed Storage, Driver And Passenger Door Bins
- Locking Glove Box- Manual Adjustable Front Head Restraints- Manual Air Conditioning
- Manual Tilt/Telescoping Steering Column- Outside Temp Gauge
- Power 1st Row Windows w/Driver And Passenger 1-Touch Down - Power Door Locks
- Refrigerant Compressor (KMV)
- Remote Keyless Entry w/Integrated Key Transmitter and Illuminated Entry
- Seats w/Vinyl Back Material- Tunja Seat Upholstery- Urethane Gear Shift Knob

Exterior

- Aero-Composite Halogen Daytime Running Headlamps- Argent Bodsides Moldings
- Argent Front Bumper w/2 Tow Hooks- Argent Rear Bumper w/1 Tow Hook
- Black Door Handles- Black Grille
- Black Manual Side Mirrors w/Convex Spotter and Manual Folding
- Black Side Windows Trim and Black Front Windshield Trim - Clearcoat Paint

- ECO Power Steering Pump- Fixed Interval Wipers- Front License Plate Bracket
- Fuel Pump, Electric- Full-Size Spare Tire Stored Underbody w/Crankdown
- Fully Galvanized Steel Panels- LED Brakelights- Light Tinted Glass
- Sliding Rear Passenger Side Door- Splash Guards- Split Swing-Out Rear Cargo Access
- Steel Spare Wheel- Tailgate/Rear Door Lock Included w/Power Door Locks
- Tires: LT245/75R16 -inc: Kumho brand- Wheels: 6.5J x 16 Steel
- Wheels: 6.5J x 16 Steel Painted Black

Safety

- 2 12V DC Power Outlets
- 4-Way Driver Seat -inc: Manual Recline and Fore/Aft Movement
- 4-Way Passenger Seat -inc: Manual Recline and Fore/Aft Movement - Air Filtration
- Analog Display- Ashtray- Board Floor Trim
- Bucket Seats -inc: adjustable front passenger seat - Cargo Space Lights
- Day-Night Rearview Mirror- Driver And Front Passenger Armrests- Driver Foot Rest
- Engine Immobilizer- FOB Controls -inc: Trunk/Hatch/Tailgate
- Fade-To-Off Interior Lighting- Front Cigar Lighter(s)- Front Cloth Headliner
- Front Cupholder- Front Only Vinyl/Rubber Floor Covering
- Full Overhead Console w/Storage and 2 12V DC Power Outlets
- Gauges -inc: Speedometer, Odometer, Tachometer and Trip Odometer
- HVAC -inc: Residual Heat Recirculation and Supplemental Heater
- Instrument Panel Bin, Dashboard Storage, Interior Concealed Storage, Driver And Passenger Door Bins
- Locking Glove Box- Manual Adjustable Front Head Restraints- Manual Air Conditioning
- Manual Tilt/Telescoping Steering Column- Outside Temp Gauge
- Power 1st Row Windows w/Driver And Passenger 1-Touch Down - Power Door Locks
- Refrigerant Compressor (KMV)
- Remote Keyless Entry w/Integrated Key Transmitter and Illuminated Entry
- Seats w/Vinyl Back Material- Tunja Seat Upholstery- Urethane Gear Shift Knob

Mechanical

- 200 Amp Alternator- 220 Amp Alternator- 24.5 Gal. Fuel Tank- 2994# Maximum Payload
- 3.92 Axle Ratio- 3116# Maximum Payload
- 4-Wheel Disc Brakes w/4-Wheel ABS, Front Vented Discs, Brake Assist and Hill Hold Control
- 95-Amp/Hr 850CCA Maintenance-Free Battery- AGM Battery 12V 95 Ah
- Alternator Management- Engine: 2.1L 4-Cylinder BlueTEC Turbo Diesel
- Front Anti-Roll Bar- GVWR: 8,550 lbs- HD Shock Absorbers
- Hydraulic Power-Assist Steering- Leaf Rear Suspension w/Leaf Springs
- Rear-Wheel Drive- Single Stainless Steel Exhaust
- Strut Front Suspension w/Transverse Leaf Springs
- Transmission w/Sequential Shift Control and Oil Cooler
- Transmission: 7G-TRONIC Automatic

Option Packages

Factory Installed Packages

ENGINE: 3.0L V6 BLUETEC TURBO DIESEL

TRANSMISSION: 5-SPEED AUTOMATIC

COMFORT DRIVER'S SEAT
\$211

COMFORT PASSENGER SEAT
\$211

CRUISE CONTROL
\$363

-
D-RING CARGO STRAPS
\$74

-
6-CYLINDER ENGINE/5-SPEED
TRANSMISSION
\$1,500

-
STANDARD PAINT ARCTIC WHITE

-
BLACK, TUNJA SEAT UPHOLSTERY

-
TIRES: LT245/75R16
-inc: Kumho brand

-
WHEELS: 6.5J X 16 STEEL

-
Option Packages Total
\$2,359

Shawnee Motor Company

shawneemotors.com

(214) 350-2931

3250 Oradell Ln

Dallas, Texas 75220

© 2020 AutoRevo - All rights reserved. - Powered by AutoRevo