



2006 Ford F-150 XLT

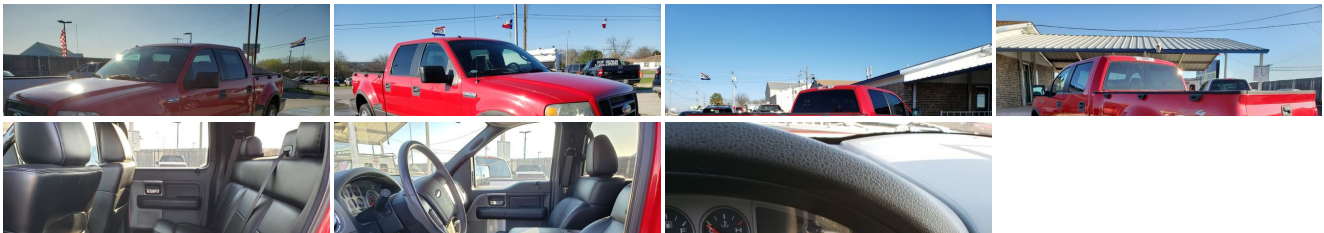
Our Price \$12,950

View this vehicle on our website at randyadamsinc.com

[\(830\) 625-7159](tel:8306257159)

1687 Business Loop 35 S , New Braunfels, TX 78130

Photos
Details
Contact



Specifications:

| | |
|--------------------|-----------------------------------|
| Year: | 2006 |
| VIN: | 1FTPW04536KD94657 |
| Make: | Ford |
| Model/Trim: | F-150 XLT |
| Condition: | Pre-Owned |
| Body: | Pickup Truck |

| | |
|------------------|-----------------------|
| Exterior: | Red |
| Engine: | 5.4L 3V EFI V8 ENGINE |
| Interior: | Gray Cloth |
| Mileage: | 96,457 |
| Economy: | City 14 / Highway 18 |

Vehicle Description

Installed Options

Interior

- AM/FM stereo w/CD player & clock- Color-coordinated carpeted front/rear floor mats
- Front pwr point
- Premium cloth 40/20/40 split bench front seat w/manual driver & passenger lumbar
- Pwr 1st row windows w/driver side one-touch down- Pwr 2nd row windows
- Pwr door locks w/autolock feature- Rear pwr point
- Remote keyless entry w/(2) fobs, illuminated entry & panic button
- (2) instrument panel cupholders- (2) rear cupholders- 2nd row grab handles
- Color-coordinated carpet- Color-coordinated urethane steering wheel
- Delayed accessory pwr- Display center-inc: warning messages & text functions
- Driver & front passenger covered visor vanity mirrors
- Driver & passenger side A-pillar grab handles- Fade-to-off interior lighting
- Front map lights (function as dome lamp)
- Gauges-inc: voltmeter, oil pressure, engine coolant temp, speedometer & odometer
- Glove box- Manual air conditioning- Outside temp gauge & compass
- Overhead console w/small storage bin- Rear dome lamp
- SecuriLock anti-theft ignition (PATS)- Speed control- Tachometer- Tilt steering column

Exterior

- Fixed rear window w/privacy tint glass- Pwr side mirrors- (4) full-size doors
- Autolamp-inc: automatic on/off headlamps- Black "honeycomb" grille insert
- Black door & tailgate handles- Body-color grille surround- Cargo lamp integrated
- Chrome front bumper w/black lower valance & body-color fascia
- Chrome rear step bumper- Interval wipers- Tailgate, removable w/key lock & lift assist

Safety

- AM/FM stereo w/CD player & clock- Color-coordinated carpeted front/rear floor mats
- Front pwr point
- Premium cloth 40/20/40 split bench front seat w/manual driver & passenger lumbar
- Pwr 1st row windows w/driver side one-touch down- Pwr 2nd row windows
- Pwr door locks w/autolock feature- Rear pwr point
- Remote keyless entry w/(2) fobs, illuminated entry & panic button
- (2) instrument panel cupholders- (2) rear cupholders- 2nd row grab handles
- Color-coordinated carpet- Color-coordinated urethane steering wheel
- Delayed accessory pwr- Display center-inc: warning messages & text functions
- Driver & front passenger covered visor vanity mirrors
- Driver & passenger side A-pillar grab handles- Fade-to-off interior lighting
- Front map lights (function as dome lamp)
- Gauges-inc: voltmeter, oil pressure, engine coolant temp, speedometer & odometer
- Glove box- Manual air conditioning- Outside temp gauge & compass
- Overhead console w/small storage bin- Rear dome lamp
- SecuriLock anti-theft ignition (PATS)- Speed control- Tachometer- Tilt steering column

Mechanical

- 17" chrome clad steel wheels- 4-speed automatic transmission w/OD
- 4.6L EFI V8 engine- P255/70R17 all-terrain OWL tires
- Pwr front/rear anti-lock disc brakes (ABS)- (2) front tow hooks- 130-amp alternator
- 2-ton jack- 27 gallon fuel tank- 4-wheel drive- 58-amp/hr maintenance-free battery
- 6.5' pickup box w/(4) tie-down hooks- 6900# GVWR, 1280# maximum payload
- Electronic shift-on-the-fly (ESOF) transfer case
- Engine block heater *STD on retail vehicles only in AK, MN, ND, SD, MT, WI & WY. Optional on fleet vehicles*
- Flareside pickup box- Front stabilizer bar
- Full-size spare tire w/lock & underframe winch-type carrier
- Independent coil-over-shock double wishbone front suspension
- Pwr rack & pinion steering- Solid rear axle w/leaf spring rear suspension

Option Packages

Factory Installed Packages

| | |
|-----------------------|-------|
| 5.4L 3V EFI V8 ENGINE | \$895 |
|-----------------------|-------|

| | |
|-----------------------|-------|
| Option Packages Total | \$895 |
|-----------------------|-------|

Purchase prices do not include taxes, title, license, inspection or doc fee. It is the customer's sole responsibility to verify the accuracy of the price and existence and condition of any equipment listed. Dealer is not responsible for any typographical, technical or misprint errors on prices or equipment. This site and all information and materials appearing on it, are presented to the user "as is" without warranty of any kind, either express or implied. Mileage posted may vary slightly due to local test driving, in-transit repairs or road testing. Pricing subject to change without notice. All vehicles are subject to prior sale.



Randy Adams Inc.

View this car on our website at randyadamsinc.com/6763162

Website: randyadamsinc.com

Phone: (830) 625-7159

Map: [1687 Business Loop 35 S, New Braunfels, TX 78130](#)

