



2012 Ford F-150 Lariat

Our Price \$23,498

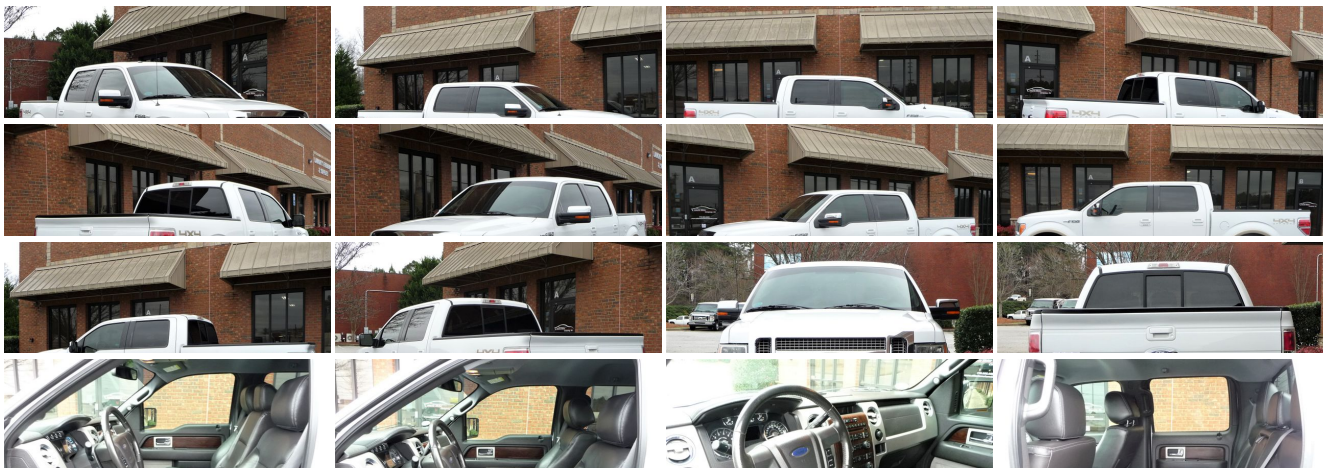
View this vehicle on our website at atlantamotorcompany.com



[\(770\) 965-0281](tel:7709650281)

4606 Elk Ridge Ct., Suite A, Flowery Branch, Georgia 30542

- Photos
- Details
- Contact





Specifications:

Year:	2012
VIN:	1FTFW1EF6CFC17078
Make:	Ford
Stock:	T2453
Model/Trim:	F-150 Lariat
Condition:	Pre-Owned
Body:	Pickup Truck
Exterior:	Oxford White
Engine:	5.0L V8 FFV ENGINE
Interior:	Black Leather
Mileage:	50,877
Drivetrain:	4 Wheel Drive
Economy:	City 14 / Highway 19

Vehicle Description

SHOWN BY APPOINTMENT ONLY

Installed Options

Interior

- Color-coordinated carpet -inc: carpeted front/rear floor mats
- Driver side SecuriCode keypad entry- Front pwr point
- Leather trimmed 40/20/40 split bench front seat w/heated 10-way pwr driver & front passenger seats w/lumbar, driver seat memory
- Pwr door locks w/autolock feature- Rear pwr point
- Remote keyless entry w/integrated key transmitter, illuminated entry & panic button
- 2nd row B-pillar grab handles- 4-way adjustable front seat headrests
- 4.2" LCD productivity screen message center w/trip computer -inc: display center features plus distance to empty, average fuel economy, multiple language display choices & temp readout options
- Auto-dimming rearview mirror w/compass
- Chrome ring w/obsidian vanes air conditioning registers- Cruise control
- Customer info display- Delayed accessory pwr
- Deployable cupholder under middle seat- Driver & front passenger door scuff plates
- Driver & front passenger illuminated covered visor vanity mirrors
- Dual zone electronic automatic temp control (DEATC) air conditioning
- Fade-to-off interior lighting- Front passenger side A-pillar grab handle
- Front/rear map lights
- Gauges -inc: fuel gauge, voltmeter, oil pressure, engine coolant temp, speedometer, tachometer, odometer
- Instrument panel mounted cigar lighter- Lariat woodgrain interior trim accents
- Leather-wrapped color coordinated steering wheel w/audio controls
- Outside temp gauge- Overhead console w/(2) storage bins- Perimeter alarm
- Premium vinyl 60/40 flip-up rear split bench seat -inc: folding armrest, cupholders, elongated seat cushion, leather inserts
- Pwr 1st & 2nd row windows w/driver 1-touch down- Pwr adjustable pedals w/memory
- Rear door cupholders- Rear window defroster- SecuriLock anti-theft ignition (PATS)
- Tilt steering column

Exterior

- 18" bright aluminum wheels- P275/65R18 all-terrain OWL tires- Pwr sliding rear window
- (4) full-size doors- Autolamp -inc: automatic on/off headlamps
- Black front/rear stone cuffs- Body-color door & tailgate handles
- Body-color wheel lip moldings- Cargo lamp integrated w/high mount stop light

Option Packages

Factory Installed Packages

5.0L V8 FFV ENGINE

20" 6-SPOKE MACHINED ALUMINUM WHEELS \$795

6" CHROME ANGULAR RUNNING BOARDS \$695

LARIAT CHROME PKG

-inc: 18" chrome clad aluminum wheels, chrome mesh grille insert, 6" chrome angular step bars, chrome exhaust tip, pwr heated side mirrors w/turn signals/memory/drivers auto-dimming function/chrome skull caps, body-color door handles w/chrome strap, chrome front tow hooks \$1,495

LARIAT PLUS PKG

-inc: AM/FM stereo w/6-disc in-dash CD changer w/MP3 capability & aux audio input jack, speed compensated volume control, universal garage door opener, reverse sensing system, rear view camera, pwr heated pwr folding side mirrors w/turn signals/memory/drivers auto-dimming function/body-color skull caps, remote start system \$950

SPRAY-IN BED LINER \$475

OXFORD WHITE

PALE ADOBE METALLIC

- Chrome front bumper w/black lower valance & body-color upper fascia
- Chrome two bar grille surround w/silver mesh insert - Fog lamps
- Full-size spare tire w/lock, under frame winch-type carrier, safety catch
- Pwr heated side mirrors w/turn signals/memory/drivers auto-dimming function/body-color skull caps
- Rear privacy tint glass- Removable tailgate w/key lock & lift assist
- Variable speed intermittent wipers

Safety

- Color-coordinated carpet -inc: carpeted front/rear floor mats
- Driver side SecuriCode keypad entry- Front pwr point
- Leather trimmed 40/20/40 split bench front seat w/heated 10-way pwr driver & front passenger seats w/lumbar, driver seat memory
- Pwr door locks w/autolock feature- Rear pwr point
- Remote keyless entry w/integrated key transmitter, illuminated entry & panic button
- 2nd row B-pillar grab handles- 4-way adjustable front seat headrests
- 4.2" LCD productivity screen message center w/trip computer -inc: display center features plus distance to empty, average fuel economy, multiple language display choices & temp readout options
- Auto-dimming rearview mirror w/compass
- Chrome ring w/obsidian vanes air conditioning registers- Cruise control
- Customer info display- Delayed accessory pwr
- Deployable cupholder under middle seat- Driver & front passenger door scuff plates
- Driver & front passenger illuminated covered visor vanity mirrors
- Dual zone electronic automatic temp control (DEATC) air conditioning
- Fade-to-off interior lighting- Front passenger side A-pillar grab handle
- Front/rear map lights
- Gauges -inc: fuel gauge, voltmeter, oil pressure, engine coolant temp, speedometer, tachometer, odometer
- Instrument panel mounted cigar lighter- Lariat woodgrain interior trim accents
- Leather-wrapped color coordinated steering wheel w/audio controls
- Outside temp gauge- Overhead console w/(2) storage bins- Perimeter alarm
- Premium vinyl 60/40 flip-up rear split bench seat -inc: folding armrest, cupholders, elongated seat cushion, leather inserts
- Pwr 1st & 2nd row windows w/driver 1-touch down- Pwr adjustable pedals w/memory
- Rear door cupholders- Rear window defroster- SecuriLock anti-theft ignition (PATS)
- Tilt steering column

Mechanical

- Trailer tow pkg -inc: class IV trailer hitch receiver, 7-pin wiring harness, upgraded radiator, aux trans oil cooler, SelectShift trans
- (2) front tow hooks- (4) pickup box tie-down hooks- 2-speed automatic 4-wheel drive
- 2-ton jack- 3.55 axle ratio (REQ: 99F Engine)- 5.0L V8 FFV engine- 5.5' pickup box
- 6-speed electronic automatic transmission w/OD & tow/haul mode
- 7350# GVWR, 1700# maximum payload- 78-amp/hr (750CCA) maintenance-free battery
- Easy Fuel capless fuel filler system- Four-wheel-down towing- Gas shock absorbers
- Leaf spring rear suspension w/2-stage variable rear springs
- Long-spindle double wishbone front suspension w/coil-over-shock IFS
- Pwr front/rear disc brakes- Pwr rack & pinion steering- Trailer sway control

P275/55R20 ALL-TERRAIN OWL TIRES

-inc: LT275/65R18C all-terrain OWL spare tire

Option Packages Total

\$4,410

Atlanta Motor Company, Inc

Atlanta Motor Company, Inc

View this car on our website at atlantamotorcompany.com/6762351

Website: atlantamotorcompany.com

Phone: (770) 965-0281

Map: [4606 Elk Ridge Ct., Suite A, Flowery Branch, Georgia 30542](#)

