



2005 CHEVROLET TAHOE LS AUTOMATIC SERVICE RECORDS

Contact Sales 310-987-1212

Our Price \$2,990

View this vehicle on our website at boutiqueautosales.com

Boutique Auto Sales

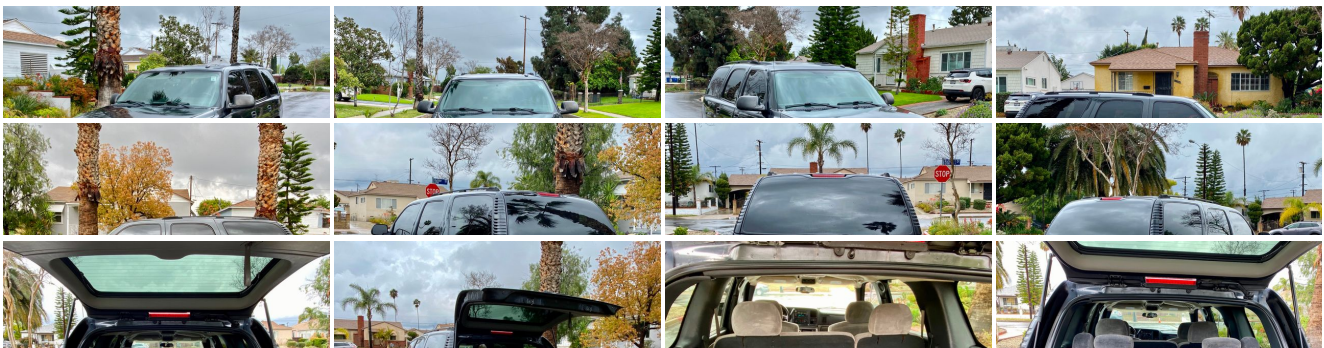
[310-987-1212](tel:310-987-1212)

5950 Laurel Canyon Blvd, North Hollywood, CA 91607

Photos

Details

Contact





Specifications:

Year:	2005
VIN:	1GNEC13T45R193529
Make:	CHEVROLET
Stock:	3529
Model/Trim:	TAHOE LS AUTOMATIC SERVICE RECORDS
Condition:	Pre-Owned
Body:	SUV
Exterior:	Dark Gray Metallic
Engine:	ENGINE, VORTEC 5300 V8 SFI
Interior:	Gray/Dark Charcoal Cloth
Transmission:	TRANSMISSION, 4-SPEED AUTOMATIC, ELECTRONICALLY CONTROLLED with overdrive and tow/haul mode
Mileage:	180,581
Drivetrain:	Rear Wheel Drive
Economy:	City 15 / Highway 20

Vehicle Description

Installed Options

Interior

- Air conditioning, tri-zone, manual, individual climate settings for driver, right front passenger and rear passengers, includes front and rear HVAC systems (Upgraded to (CJ2) Air conditioning, tri-zone, automatic when (CF5) Sunroof, power is ordered)
- Assist handles, front passenger and outboard 2nd row seats
- Console, overhead mini, includes map lights and rear seat HVAC controls (Includes sunroof controls when (CF5) Sunroof is ordered)
- Cruise control, electronic with set and resume speed, includes telltale in instrument panel cluster
- Defogger, rear-window, electric
- Door locks, power programmable includes lockout protection
- Driver Information Center, monitors numerous systems depending on vehicle equipment
- Floor covering, color-keyed carpeting
- Floor mats, color-keyed, carpeted front and 2nd row, removable - Headliner, cloth
- Instrumentation, analog, includes speedometer, odometer with trip odometer, fuel level, voltmeter, engine temperature, oil pressure and tachometer
- Key, single, 2-sided
- Keyless entry, remote, includes 2 transmitters, panic button and content theft alarm
- Lighting, dome lamp, driver and passenger side door switch with delayed entry feature, cargo lamps, door handle or keyless remote activated illuminated entry, map lights in front and 2nd seat positions
- Mirror, inside rearview, 8-point compass, outside temperature indicator and right front passenger air bag status
- OnStar, 1-year Safe and Sound Service, includes automatic notification of air bag deployment, stolen vehicle tracking, emergency services, roadside assistance, remote door unlock, remote horn and lights, GM Goodwrench remote diagnostics, AccidentAssist and online concierge. Drivers can also obtain the available voice-activated, hands-free Personal Calling service and Virtual Advisor that provides location-based traffic and weather reports and other personalized information (Not available with FDR order types. Not available with a ship-to of Puerto Rico or the Virgin Islands. If the order type is FDR, (UE0) OnStar, delete will be forced on. Visit www.onstar.com for system information and details.)
- Power outlets, auxiliary, 2 on instrument panel, 1 in cargo area, 12-volt
- Seats, front Custom Cloth 40/20/40 split-bench, 3-passenger, driver and passenger

Option Packages

Factory Installed Packages

ENGINE, VORTEC 5300 V8 SFI (295 HP [219.7 kW] @ 5200 rpm, 335 lb.-ft. [452.3 N-m] @ 4000 rpm)	\$800
-----------------------------------------------------------------------------------------------------	--------------

TRANSMISSION, 4-SPEED AUTOMATIC, ELECTRONICALLY CONTROLLED with overdrive and tow/haul mode	
---------------------------------------------------------------------------------------------	--

AIR BAGS, SIDE-IMPACT, DRIVER AND RIGHT FRONT PASSENGER	\$350
---------------------------------------------------------	--------------

BATTERY, SINGLE 770 CCA Provides a 770 CCA HD cranking battery.	\$56
--------------------------------------------------------------------	-------------

CARGO PACKAGE includes (RYJ) Cargo shade, (AP9) Cargo net, (B39) Cargo mat and (V1K) Luggage rack center rails. When (AS3) Seats, rear 3rd row 50/50 split-bench is ordered, package does not include (RYJ) Cargo shade or (B39) Cargo mat	\$205
-----------------------------------------------------------------------------------------------------------------------------------------------------------------------------------------------------------------------------------------------	--------------

Option Packages Total	\$1,411
-----------------------	----------------

- Seats, front Custom Cloth 40/20/40 split-bench, 3-passenger, driver and passenger manual reclining, outboard head restraints, center fold-down storage armrest, 6-way power adjustable driver seat and rear storage pockets
- Seats, middle Custom Cloth 60/40 split-folding bench, 3-passenger with center armrest (Upgradeable to (AT5) Seats, middle leather appointed 60/40 split-folding bench)
- Sound system feature, 8-speakers
- Sound system, ETR AM/FM stereo with CD and cassette player, includes seek-and-scan, digital clock, auto-tone control, speed-compensated volume, TheftLock, random select, auto-reverse cassette and Radio Data System (RDS) (Upgradeable to (UC6) Sound system, ETR AM/FM stereo with in-dash 6-disc CD changer.)
- Steering column, Tilt-Wheel, adjustable includes brake/transmission shift interlock
- Steering wheel, leather-wrapped rim, Black
- Steering wheel, mounted controls includes audio and driver information center controls
- Theft-deterrent system, PASSLock II
- Tire pressure monitoring system (does not apply to spare tire)
- Visors, padded, driver and passenger side with cloth trim, extenders, illuminated vanity mirrors and corner storage pockets on back of visors
- Warning tones, headlamp on, key-in-ignition, driver and right front passenger safety belt unfasten, turn signal on
- Windows, power, includes driver express-down and lockout features

Exterior

- Air dam, Gray
- Assist steps, Black, mounted between front and rear wheels at bottom of rocker panel
- Bumper, front, chrome (Refer to Color Compatibility chart for Matte Black vs. color-keyed top pad)
- Bumper, rear, chrome step, includes pad
- Daytime running lamps, includes automatic exterior lamp control
- Door handles, Matte Black- Fog lamps, front, rectangular, halogen
- Glass, Solar-Ray deep tinted (all windows except light tinted glass on windshield, driver and front passenger)
- Grille, chrome surround
- Headlamps, dual halogen composite, includes flash-to-pass feature and automatic lamp control
- Luggage rack, roof-mounted, Black, side rails only (Center rails available in (PDC) Cargo Package)
- Mirrors, outside rearview, foldaway, power adjustable, heated
- Moldings, bodyside (Bodyside moldings are Matte Black)
- Wipers, intermittent, front wet-arm with pulse washers

Safety

- Air conditioning, tri-zone, manual, individual climate settings for driver, right front passenger and rear passengers, includes front and rear HVAC systems (Upgraded to (CJ2) Air conditioning, tri-zone, automatic when (CF5) Sunroof, power is ordered)
- Assist handles, front passenger and outboard 2nd row seats
- Console, overhead mini, includes map lights and rear seat HVAC controls (Includes sunroof controls when (CF5) Sunroof is ordered)
- Cruise control, electronic with set and resume speed, includes telltale in instrument panel cluster
- Defogger, rear-window, electric
- Door locks, power programmable includes lockout protection
- Driver Information Center, monitors numerous systems depending on vehicle equipment
- Floor covering, color-keyed carpeting
- Floor mats, color-keyed, carpeted front and 2nd row, removable - Headliner, cloth
- Instrumentation, analog, includes speedometer, odometer with trip odometer, fuel level, voltmeter, engine temperature, oil pressure and tachometer
- Key, single, 2-sided
- Keyless entry, remote, includes 2 transmitters, panic button and content theft alarm
- Lighting, dome lamp, driver and passenger side door switch with delayed entry feature, cargo lamps, door handle or keyless remote activated illuminated entry, map lights in front and 2nd seat positions
- Mirror, inside rearview, 8-point compass, outside temperature indicator and right front passenger air bag status
- OnStar, 1-year Safe and Sound Service, includes automatic notification of air bag deployment, stolen vehicle tracking, emergency services, roadside assistance, remote door unlock, remote horn and lights, GM Goodwrench remote diagnostics, AccidentAssist and online concierge. Drivers can also obtain the available voice-activated, hands-free Personal Calling service and Virtual Advisor that provides location-based traffic and weather reports and other personalized information (Not available with FDR order types. Not available with a ship-to of Puerto Rico or the Virgin Islands. If the order type is FDR, (UE0) OnStar, delete will be forced on. Visit www.onstar.com for system information and details.)
- Power outlets, auxiliary, 2 on instrument panel, 1 in cargo area, 12-volt
- Seats, front Custom Cloth 40/20/40 split-bench, 3-passenger, driver and passenger manual reclining, outboard head restraints, center fold-down storage armrest, 6-way power adjustable driver seat and rear storage pockets
- Seats, middle Custom Cloth 60/40 split-folding bench, 3-passenger with center armrest (Upgradeable to (AT5) Seats, middle leather appointed 60/40 split-folding bench)

- Sound system feature, 8-speakers
- Sound system, ETR AM/FM stereo with CD and cassette player, includes seek-and-scan, digital clock, auto-tone control, speed-compensated volume, TheftLock, random select, auto-reverse cassette and Radio Data System (RDS) (Upgradeable to (UC6) Sound system, ETR AM/FM stereo with in-dash 6-disc CD changer.)
- Steering column, Tilt-Wheel, adjustable includes brake/transmission shift interlock
- Steering wheel, leather-wrapped rim, Black
- Steering wheel, mounted controls includes audio and driver information center controls
- Theft-deterrent system, PASSLock II
- Tire pressure monitoring system (does not apply to spare tire)
- Visors, padded, driver and passenger side with cloth trim, extenders, illuminated vanity mirrors and corner storage pockets on back of visors
- Warning tones, headlamp on, key-in-ignition, driver and right front passenger safety belt unfasten, turn signal on
- Windows, power, includes driver express-down and lockout features

Mechanical

- Alternator, 160 amps
- Battery, heavy-duty, 600 cold-cranking amps, includes rundown protection and retained accessory power
- Body, liftgate with liftglass, rear door system, includes rear-window wiper/washer
- Brakes, 4-wheel antilock, 4-wheel disc, hydroboost
- Engine, Vortec 4800 V8 SFI (285 HP [212.3 kW] @ 5200 rpm, 295 lb.-ft. [398.2 N-m] @ 4000 rpm) (Upgradeable to (LM7) Engine, Vortec 5300 V8 SFI.)
- Fuel capacity, approximate, 26 gallon (98 liters)
- GVWR, 6500 lbs. (2948 kg) (Requires 2WD Model - Included and only available when (AS3) Seats, 3rd row 50/50 split-bench is not ordered.)
- Rear axle, 3.23 ratio (Requires 2WD Models. Upgradeable to (GT4) Rear axle, 3.73 ratio.)
- Rear wheel drive- StabiliTrak, vehicle stability enhancement system- Steering, power
- Suspension Package, Premium Smooth Ride (Upgradeable to (Z55) Suspension Package, Autoride)
- Suspension, front, independent torsion bar, and stabilizer bar
- Suspension, rear, multi-link with coil springs
- Tire carrier, lockable, outside spare, winch-type mounted under frame at rear
- Tire, spare, full-size, 16" (40.6 cm) steel wheel located at rear underbody of vehicle, blackwall
- Tires, P265/70R16, all-season touring, blackwall (Upgradeable to (QMK) Tires, P265/70R16, all-season touring, white outlined-letter)
- Trailing wiring harness, 7-wire
- Transmission, 4-speed automatic, electronically controlled with overdrive and tow/haul mode
- Wheels, 4 - 16" x 7" (40.6 cm x 17.8 cm) 6-lug cast aluminum, includes steel spare

Boutique Auto Sales

Boutique Auto Sales

View this car on our website at boutiqueautosales.com/6762170

Website: boutiqueautosales.com

Phone: [310-987-1212](tel:310-987-1212)

Map: [5950 Laurel Canyon Blvd, North Hollywood, CA 91607](#)

