



## 2010 LEXUS HS 250h PREMIUM NAVIGATION SERVICE RECORDS XLNT COND.

Contact Sales 310-987-1212

**Our Price \$8,990**

**Retail Value \$10,892**

View this vehicle on our website at [boutiqueautosales.com](http://boutiqueautosales.com)

Boutique Auto Sales

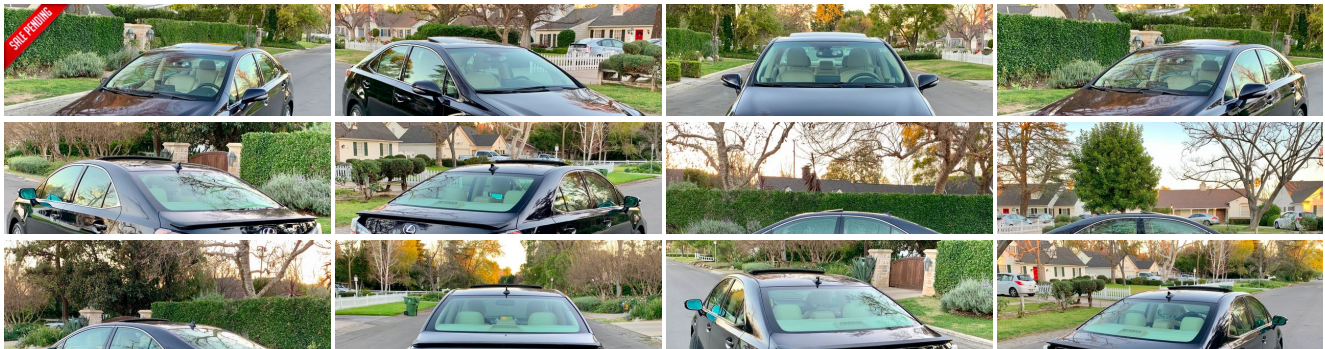
[310-987-1212](tel:310-987-1212)

5950 Laurel Canyon Blvd, North Hollywood, CA 91607

Photos

Details

Contact





## Specifications:

<b>Year:</b>	2010
<b>VIN:</b>	<a href="#">JTHBB1BA7A2034150</a>
<b>Make:</b>	LEXUS
<b>Stock:</b>	4150
<b>Model/Trim:</b>	HS 250h PREMIUM NAVIGATION SERVICE RECORDS XLNT COND.
<b>Condition:</b>	Pre-Owned
<b>Body:</b>	Sedan
<b>Exterior:</b>	Starfire Pearl
<b>Engine:</b>	2.4L DOHC SFI 16-valve Atkinson cycle I4 engine -inc: variable valve timing w/intelligence (VVT-i), permanent magnet electric motors
<b>Interior:</b>	Parchment Leather
<b>Mileage:</b>	102,555
<b>Drivetrain:</b>	Front Wheel Drive
<b>Economy:</b>	City 35 / Highway 34

## Vehicle Description

### Installed Options

#### Interior

- (3) rear seat adjustable headrests
- Automatic dual-zone climate control -inc: air filter, rear seat vents
- Brown walnut interior trim- Carpeted front & rear floor mats
- Center console -inc: (2) front cupholders, storage, 12V pwr outlet - Coat hooks
- Cruise control- Driving controls -inc: normal, pwr, ECO & EV controls
- Dual illuminated vanity mirrors -inc: sliding extensions
- Electrochromic rearview mirror -inc: compass
- Force-limiting seatbelt pretensioners on all outboard seats- Front door storage pockets
- Front/rear door cup/bottle holders- Genuine wood interior trim
- Heated/ventilated front bucket seats -inc: 10-way pwr driver w/pwr lumbar, 8-way pwr front passenger w/pwr lumbar, driver seat memory, adjustable headrests
- HomeLink garage door opener- Illuminated entry -inc: door courtesy lights
- Leather-wrapped illuminated shift knob
- Leather-wrapped pwr tilt/telescopic steering wheel -inc: audio & display controls, memory, auto tilt-away
- Lexus personalized settings (LPS)
- Organic light-emitting diode (OLED) multi-information display -inc: ECO driving mode indicator
- Outside temp gauge- Peforated semi-aniline leather interior trim
- Pwr door locks -inc: anti lock-out feature - Pwr fuel door & trunk release
- Pwr windows -inc: 1-touch auto up/down, jam protection, remote-linked
- Rear defogger w/timer- Retained accessory pwr- Semi-aniline leather seat trim
- SmartAccess key system- Vehicle theft-deterrent system w/engine immobilizer

#### Exterior

- 18" x 7.5" 5-spoke aluminum wheels - Automatic on/off headlamps -inc: off-delay
- Exclusive chrome-accented hybrid grille design- Integrated front fog lamps
- Integrated front/rear lower spoilers- LED brake & tail lights
- P225/45WR18 BSW all-season tires
- Pwr heated electrochromic mirrors -inc: integrated turn signals, puddle lamps, memory, reverse tilt-down, defoggers

### Option Packages

#### Factory Installed Packages

BACKUP MONITOR	\$350
LED HEADLAMPS -inc: intelligent high beams, adaptive front lighting system, headlamp washers	\$1,805
MARK LEVINSON AUDIO SYSTEM -inc: AM/FM stereo, in-dash 6-disc DVD changer, automatic sound levelizer (ASL), USB jack, aux audio jack, (15) speakers, 330-watt output	\$1,580
NAVIGATION SYSTEM -inc: HDD navigation system, voice command, XM NavTraffic & XM NavWeather, XM Sports & Stocks, Lexus Insider, Lexus Enform w/destination assist, eDestination	\$2,125
PARK ASSIST PKG -inc: front/rear sensors	\$500
REAR SPOILER	\$200
TECH PKG -inc: lane keep assist, dynamic radar cruise control, heads up display, park assist w/front/rear sensors, pre-collision system w/driver attention monitor	\$3,900

- reverse tilt-down, defoggers
- Pwr tilt/slide moonroof -inc: 1-touch open/close, sunshade
- Rain-sensing variable intermittent windshield wipers- T145/70D17 temporary spare tire
- UV & windshield-infrared ray-reducing tinted window glass
- Water-repellant front door glass

## Safety

- (3) rear seat adjustable headrests
- Automatic dual-zone climate control -inc: air filter, rear seat vents
- Brown walnut interior trim- Carpeted front & rear floor mats
- Center console -inc: (2) front cupholders, storage, 12V pwr outlet - Coat hooks
- Cruise control- Driving controls -inc: normal, pwr, ECO & EV controls
- Dual illuminated vanity mirrors -inc: sliding extensions
- Electrochromic rearview mirror -inc: compass
- Force-limiting seatbelt pretensioners on all outboard seats- Front door storage pockets
- Front/rear door cup/bottle holders- Genuine wood interior trim
- Heated/ventilated front bucket seats -inc: 10-way pwr driver w/pwr lumbar, 8-way pwr front passenger w/pwr lumbar, driver seat memory, adjustable headrests
- HomeLink garage door opener- Illuminated entry -inc: door courtesy lights
- Leather-wrapped illuminated shift knob
- Leather-wrapped pwr tilt/telescopic steering wheel -inc: audio & display controls, memory, auto tilt-away
- Lexus personalized settings (LPS)
- Organic light-emitting diode (OLED) multi-information display -inc: ECO driving mode indicator
- Outside temp gauge- Peforated semi-aniline leather interior trim
- Pwr door locks -inc: anti lock-out feature- Pwr fuel door & trunk release
- Pwr windows -inc: 1-touch auto up/down, jam protection, remote-linked
- Rear defogger w/timer- Retained accessory pwr- Semi-aniline leather seat trim
- SmartAccess key system- Vehicle theft-deterrent system w/engine immobilizer

## Mechanical

- 2.4L DOHC SFI 16-valve Atkinson cycle I4 engine -inc: variable valve timing w/intelligence (VVT-i), permanent magnet electric motors
- 4-wheel pwr disc brakes
- Double wishbone independent rear suspension -inc: coil springs, gas shocks
- Electronically controlled brake system -inc: regenerative control
- Electronically controlled continuously variable transmission (ECVT)- Front wheel drive
- Front/rear stabilizer bars
- MacPherson strut independent front suspension -inc: coil springs, gas shocks
- Push button start- Rack & pinion pwr steering -inc: electronic pwr assist- Tool kit

---

WIDE VIEW FRONT MONITOR W/BACKUP MONITOR	\$700
--	-------

---

ALL-WEATHER FLOOR MATS	\$109
------------------------	-------

---

REAR BUMPER APPLIQUE	\$76
----------------------	------

---

REMOTE ENGINE START	\$375
---------------------	-------

---

TRUNK MAT	\$73
-----------	------

---

WHEEL LOCKS	\$73
-------------	------

---

BLACK, SEMI-ANILINE LEATHER SEAT TRIM	
---------------------------------------	--

---

Option Packages Total	\$11,866
-----------------------	----------

---

Boutique Auto Sales

Boutique Auto Sales

View this car on our website at [boutiqueautosales.com/6762054](http://boutiqueautosales.com/6762054)

Website: [boutiqueautosales.com](http://boutiqueautosales.com)

Phone: [310-987-1212](tel:310-987-1212)

Map: [5950 Laurel Canyon Blvd, North Hollywood, CA 91607](#)

