

2018 Chevrolet Silverado 2500HD Work Truck

View this car on our website at workvansandtrucks.com/6757521/ebrochure



Our Price **\$0**

Retail Value ~~\$28,995~~

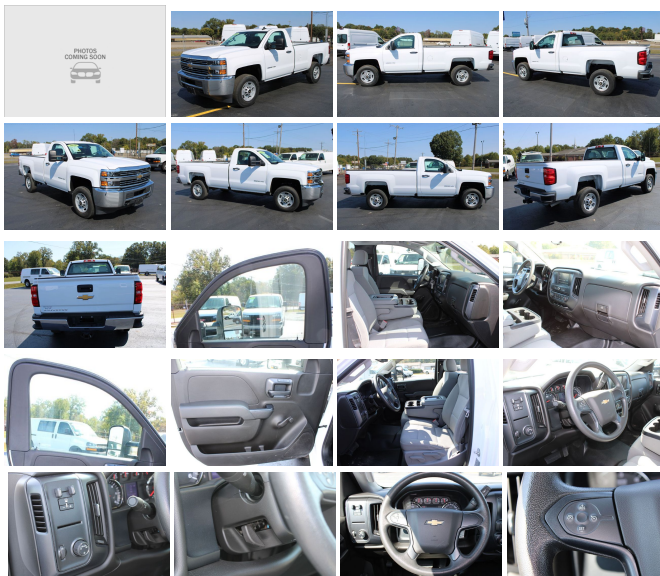
Specifications:

Year:	2018
VIN:	1GC0CUEG7JZ276466
Make:	Chevrolet
Stock:	T2363
Model/Trim:	Silverado 2500HD Work Truck
Condition:	Pre-Owned
Body:	Pickup Truck
Exterior:	WHITE
Engine:	ENGINE, VORTEC 6.0L VARIABLE VALVE TIMING V8 SFI, E85-COMPATIBLE, FLEXFUEL
Interior:	GRAY
Mileage:	30,506
Drivetrain:	Rear Wheel Drive

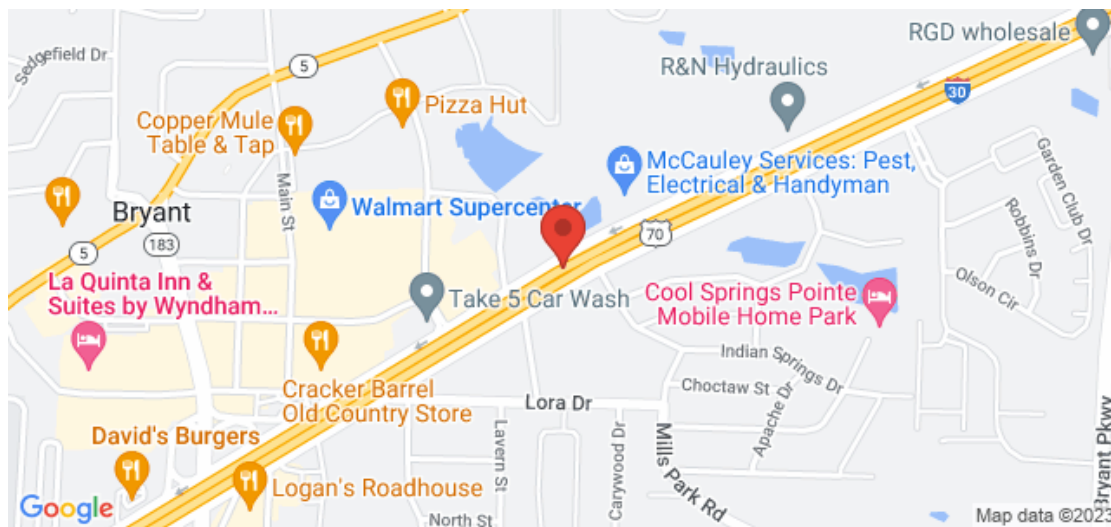
2018 CHEVROLET 2500 SILVERADO WT REG 4X2 LONGBED PICKUP 6.0 GAS ENGINE, AUTOMATIC TRANSMISSION.

This 3/4 ton work truck comes with Manual Windows, Power Door Locks, Manual Mirrors, Tow Mirrors, Tilt Steering Wheel, Trailer Brake Controller, Cruise Control, Tow Haul Mode, am/fm/xm/radio, Back-up Camera, Rear Mounted Tow Hitch, Traction Control, Locking Tail Gate, Chrome Grill and Bumpers.

Current Oil and Filter Service.



Our Location :



2018 Chevrolet Silverado 2500HD Work Truck

T & B Auto Sales - 501-847-2727 - View this car on our website at workvansandtrucks.com/6757521/ebrochure

Installed Options

Interior

- Seats, front 40/20/40 split-bench, 3-passenger, driver and front passenger recline with outboard head restraints and center fold-down armrest with storage. Vinyl has fixed lumbar and cloth has manually adjustable driver lumbar. (Upgradeable to (AZ3) front 40/20/40 split-bench seat.)
- Seat trim, Vinyl- Floor covering, Graphite-colored rubberized-vinyl
- Steering column, manual Tilt-Wheel- Steering wheel
- Instrumentation, 6-gauge cluster featuring speedometer, fuel level, engine temperature, tachometer, voltage and oil pressure
- Driver Information Center, 3.5-inch diagonal monochromatic display provides warning messages and basic vehicle information
- Door locks, power- Cruise control, steering wheel-mounted- Air conditioning, single-zone
- Assist handle, front passenger and driver on A-pillars

Exterior

- Bumper, rear chrome with bumper CornerSteps (Requires (E63) pickup box.)
- Grille surround, chrome- Headlamps, halogen projector-beam
- Lamps, cargo area, cab mounted with switch on center switch bank
- Mirrors, outside manual, Black- Glass, solar absorbing, tinted- Door handles, Black
- Tailgate and bed rail protection caps, top
- Tailgate, locking, utilizes same key as ignition and door (Not available with (AQQ) Remote Keyless Entry.)
- CornerStep, rear bumper (Requires (E63) pickup box.)- Bumper, front chrome
- Tire carrier lock keyed cylinder lock that utilizes same key as ignition and door (Not included when (ZW9) pickup box delete or (9J4) rear bumper delete is ordered.)
- Tires, LT245/75R17E all-season, blackwall
- Wheels, 17" (43.2 cm) steel includes 17" x 7.5" (43.2 cm x 19.1 cm) steel spare wheel. Spare not included with (ZW9) pickup box delete unless a spare tire is ordered

Safety

- Seats, front 40/20/40 split-bench, 3-passenger, driver and front passenger recline with outboard head restraints and center fold-down armrest with storage. Vinyl has fixed lumbar and cloth has manually adjustable driver lumbar. (Upgradeable to (AZ3) front 40/20/40 split-bench seat.)
- Seat trim, Vinyl- Floor covering, Graphite-colored rubberized-vinyl
- Steering column, manual Tilt-Wheel- Steering wheel
- Instrumentation, 6-gauge cluster featuring speedometer, fuel level, engine temperature, tachometer, voltage and oil pressure
- Driver Information Center, 3.5-inch diagonal monochromatic display provides warning messages and basic vehicle information
- Door locks, power- Cruise control, steering wheel-mounted- Air conditioning, single-zone
- Assist handle, front passenger and driver on A-pillars

Mechanical

- Exhaust, aluminized stainless-steel muffler and tailpipe
- Capless Fuel Fill (Gas engine only. Not available with (ZW9) pickup box delete.)
- Brakes, 4-wheel antilock, 4-wheel disc with DuraLife brake rotors
- Steering, Recirculating Ball with smart flow power steering system
- Recovery hooks, front, frame-mounted, black
- Frame, fully-boxed, hydroformed front section- Alternator, 150 amps
- Battery, heavy-duty 720 cold-cranking amps/80 Amp-hr, maintenance-free with rundown protection and retained accessory power
- Cooling, auxiliary external transmission oil cooler- Cooling, external engine oil cooler
- Rear wheel drive- Differential, heavy-duty locking rear- Air cleaner, high-capacity
- GVWR, 9300 lbs. (4218 kg) (Requires Regular Cab model, (L96) Vortec 6.0L V8 SFI engine or (LC8) 6.0L V8 SFI Gaseous CNG/LPG capable engine and 2WD.)
- Pickup box
- Suspension Package, Standard includes 51mm twin tube shock absorbers and 33mm front stabilizer bar
- Rear axle, 4.10 ratio (Requires (L96) Vortec 6.0L V8 SFI engine or (LC8) 6.0L V8 SFI Gaseous CNG/LPG capable engine.)
- Transmission, 6-speed automatic, heavy-duty, electronically controlled with overdrive and tow/haul mode. Includes Cruise Grade Braking and Powertrain Grade Braking (Requires (L96) Vortec 6.0L V8 SFI engine or (LC8) 6.0L V8 SFI Gaseous CNG/LPG capable engine.)
- Engine, Vortec 6.0L Variable Valve Timing V8 SFI, E85-compatible, FlexFuel capable of running on unleaded or up to 85% ethanol (360 hp [268.4 kW] @ 5400 rpm, 380 lb-ft of torque [515.0 N-m] @ 4200 rpm) (Does not include E85 capability with (ZW9) pickup box delete.)

Option Packages

Factory Installed Packages

ENGINE, VORTEC 6.0L VARIABLE VALVE TIMING V8 SFI, E85-COMPATIBLE, FLEXFUEL capable of running on unleaded or up to 85% ethanol (360 hp [268.4 kW] @ 5400 rpm, 380 lb-ft of torque [515.0 N-m] @ 4200 rpm)

AIR BAG DEACTIVATION SWITCH, FRONTAL PASSENGER-SIDE



workvansandtrucks.com

501-847-2727

25637 I-30

Bryant, AR 72022

© 2023 AutoRevo - All rights reserved. - Powered by AutoRevo