



2008 Cadillac CTS RWD w/1SA

Selling Price \$7,450

View this vehicle on our website at a4db8399-9e70-4d39-a284-2330a5b139de.autorevo-websites.com

Armstrong's Auto Group

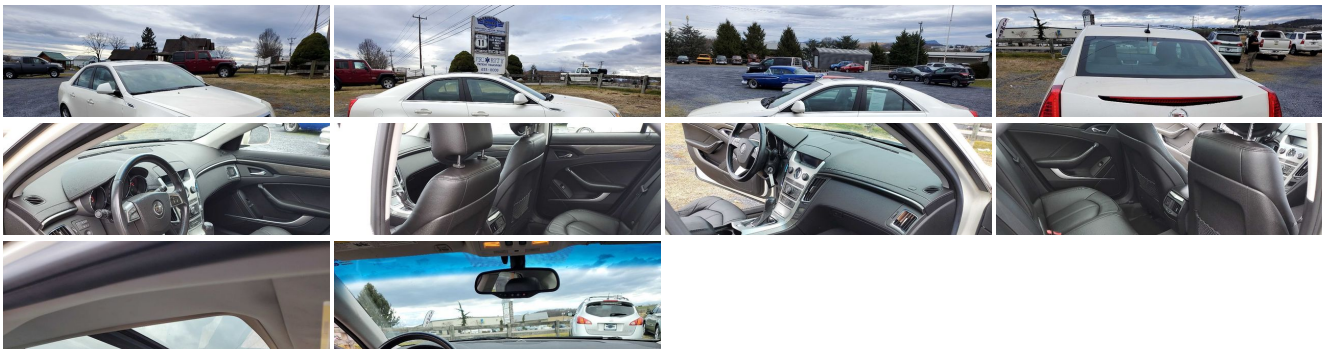
[540-434-2277](tel:540-434-2277)

1381 North Liberty Street., Harrisonburg, VA 22802

Photos

Details

Contact



Specifications:

| | |
|-------|----------------------------------------------------------|
| Year: | 2008 |
| VIN: | 1G6DF577780128699 |
| Make: | Cadillac |

| | |
|---------------|-------------------------------------------|
| Stock: | PQB80 |
| Model/Trim: | CTS RWD w/1SA |
| Condition: | Pre-Owned |
| Body: | Sedan |
| Exterior: | WHITE |
| Engine: | ENGINE, 3.6L VARIABLE VALVE TIMING V6 PFI |
| Transmission: | TRANSMISSION, 6-SPEED AUTOMATIC |
| Mileage: | 111,465 |
| Drivetrain: | Rear Wheel Drive |
| Economy: | City 17 / Highway 26 |

Vehicle Description

Installed Options

Interior

- Seats, front bucket includes 8-way power driver seat adjuster and articulating head restraints
- Seat, rear pass-through, center armrest
- Steering column, manual rake wheel and telescopic- Steering wheel, leather-wrapped
- Steering wheel controls, mounted controls for audio, HVAC and cruise
- Door locks, power programmable- Remote Keyless Entry
- Seat adjuster, front passenger manual recline- Armrest, front center
- Armrest, rear center with dual cup holders
- Console, floor with floor shifter, integral armrest, storage compartment and cup holders
- Floor mats, carpeted front and rear
- Instrumentation, analog with speedometer, tachometer, fuel gauge, oil pressure gauge, engine water temperature gauge and Driver Information Center
- Fuel gauge, analog- Tire Pressure Monitor System
- Windows, power with front and rear Express-Down, front Express-Up and rear passenger lockout
- Cruise control, electronic with set and resume speed - Trunk release, power
- Theft-deterrent system, vehicle, PASS-Key III
- Climate control, dual-zone automatic with individual climate settings for driver and right-front passenger
- Defogger, rear-window electric with front and side window outlets for the driver and right-front passenger
- Mirror, inside rearview auto-dimming with OnStar controls
- Visors, driver and front passenger illuminated vanity mirrors

Exterior

- Wheels, 17" x 8" (43.2 cm x 20.3 cm) painted aluminum
- Tires, P235/55R17 H-rated all-season, blackwall- Wipers, front intermittent with washers
- Sunroof, delete
- Headlamps, halogen Tungsten, windshield wiper-activated with Twilight Sentinel and flash-to-pass feature
- Mirrors, outside heated power-adjustable, body-color, manual-folding
- Glass, Solar-Ray light-tinted

Safety

- Seats, front bucket includes 8-way power driver seat adjuster and articulating head restraints
- Seat, rear pass-through, center armrest
- Steering column, manual rake wheel and telescopic- Steering wheel, leather-wrapped
- Steering wheel controls, mounted controls for audio, HVAC and cruise
- Door locks, power programmable- Remote Keyless Entry
- Seat adjuster, front passenger manual recline- Armrest, front center
- Armrest, rear center with dual cup holders
- Console, floor with floor shifter, integral armrest, storage compartment and cup holders
- Floor mats, carpeted front and rear
- Instrumentation, analog with speedometer, tachometer, fuel gauge, oil pressure gauge, engine water temperature gauge and Driver Information Center
- Fuel gauge, analog- Tire Pressure Monitor System
- Windows, power with front and rear Express-Down, front Express-Up and rear passenger

Option Packages

Factory Installed Packages

ENGINE, 3.6L VARIABLE VALVE TIMING V6 PFI
(263 hp [196.1 kW] @ 6400 rpm, 253 lb-ft of
torque [341.6 N-m] @ 3100 rpm)

TRANSMISSION, 6-SPEED AUTOMATIC
\$1,300

Option Packages Total
\$1,300

lockout

- Cruise control, electronic with set and resume speed - Trunk release, power
- Theft-deterrent system, vehicle, PASS-Key III
- Climate control, dual-zone automatic with individual climate settings for driver and right-front passenger
- Defogger, rear-window electric with front and side window outlets for the driver and right-front passenger
- Mirror, inside rearview auto-dimming with OnStar controls
- Visors, driver and front passenger illuminated vanity mirrors

Mechanical

- Transmission, Aisin 6-speed manual (Must specify a transmission. Not available with (PDW) Performance Luxury Package or (Y42) 18" (45.7 cm) All-Season Tire Performance Package. Base MSRP includes (MN6) Aisin 6-speed manual transmission.)
- Engine, 3.6L Variable Valve Timing V6 PFI (263 hp [196.1 kW] @ 6400 rpm, 253 lb-ft of torque [341.6 N-m] @ 3100 rpm)
- Drivetrain, rear-wheel drive- Battery, maintenance-free with rundown protection
- Suspension, 4-wheel independent- Steering, power, rack-and-pinion
- Exhaust, stainless-steel- Exhaust tips, polished

Armstrong's Auto Group

Armstrong's Auto Group

View this car on our website at a4db8399-9e70-4d39-a284-2330a5b139de.autorevo-websites.com/6756378

Website: a4db8399-9e70-4d39-a284-2330a5b139de.autorevo-websites.com

Phone: [540-434-2277](tel:540-434-2277)

Map: [1381 North Liberty Street., Harrisonburg, VA 22802](#)

