



2018 Ford Fiesta SE

Peter Gregoire (727) 709-2145

Our Price \$9,900

View this vehicle on our website at majestic-auto-sales.com

Majestic Auto Sales Inc

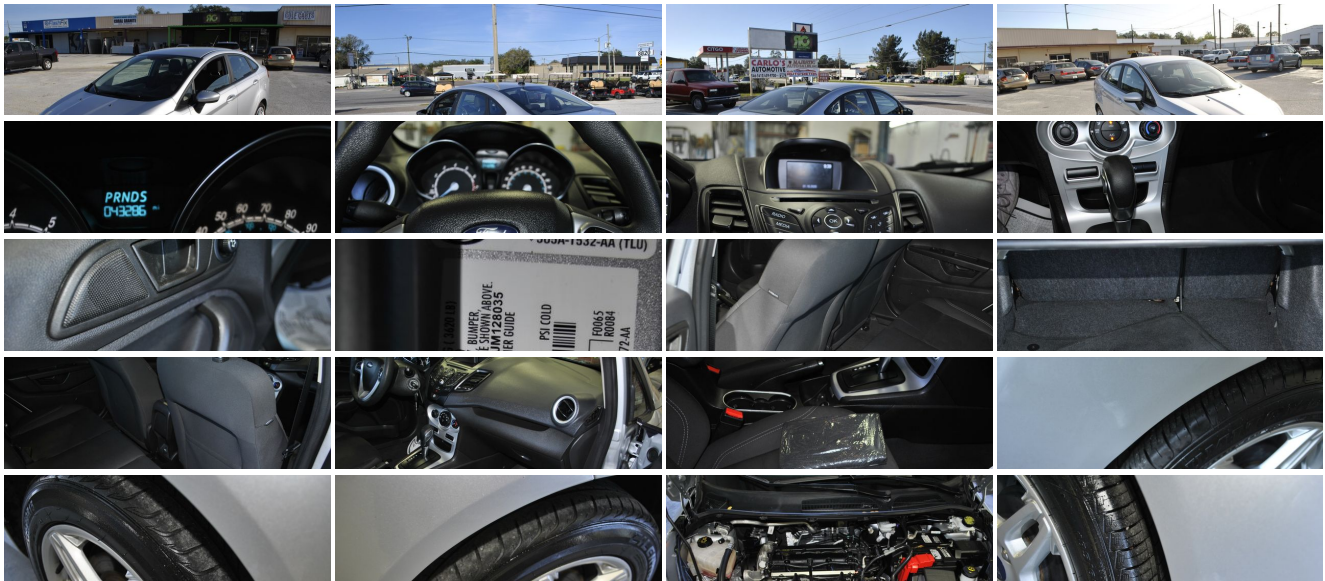
(727) 709-2145

8801 66th St N, Pinellas Park, FL 33782

Photos

Details

Contact



Specifications:

Year:	2018
VIN:	3FADP4BJ1JM128035
Make:	Ford
Stock:	201326
Model/Trim:	Fiesta SE
Condition:	Pre-Owned
Body:	Sedan
Exterior:	Shadow Black
Engine:	ENGINE: 1.6L TI-VCT I-4
Interior:	Medium Light Stone Cloth
Transmission:	TRANSMISSION: POWERSHIFT 6-SPD AUTO W/SELECTSHIFT
Mileage:	43,229
Drivetrain:	Front Wheel Drive
Economy:	City 27 / Highway 35

Vehicle Description

Majestic Auto Sales Inc offers only the very best used cars, trucks and SUVs in the Pinellas Park, FL area. Give us a call at: 727-709-2145, email us at: pete@majestic-auto-sales.com or stop by and visit us at: 8801 66th St N, Pinellas Park, FL 33782.

Installed Options

Interior

- Power 1st Row Windows w/Driver 1-Touch Up/Down
- Power Door Locks w/Autolock Feature- Power Rear Windows
- Remote Keyless Entry w/Integrated Key Transmitter and Illuminated Entry
- Unique Cloth Front Bucket Seats -inc: embossed bolsters, 6-way manual (fore/aft, up/down, recline) driver seats, 4-way manual (fore/aft, recline) passenger seats, 2-way adjustable head restraints
- 1 Seatback Storage Pocket- 2 12V DC Power Outlets
- 60-40 Folding Bench Front Facing Fold Forward Seatback Premium Cloth Rear Seat
- Air Filtration- Analog Display- Cargo Space Lights
- Carpet Floor Trim and Carpet Trunk Lid/Rear Cargo Door Trim - Cloth Door Trim Insert
- Compass- Cruise Control w/Steering Wheel Controls- Day-Night Rearview Mirror
- Driver And Passenger Visor Vanity Mirrors- Driver Foot Rest- Driver Seat
- FOB Controls -inc: Trunk/Hatch/Tailgate- Fade-To-Off Interior Lighting
- Front And Rear Map Lights- Front Center Armrest- Front Cupholder
- Full Carpet Floor Covering -inc: Carpet Front Floor Mats- Full Cloth Headliner
- Full Floor Console w/Storage, Mini Overhead Console w/Storage and 2 12V DC Power Outlets
- Gauges -inc: Speedometer, Odometer, Tachometer, Trip Odometer and Trip Computer
- HVAC -inc: Underseat Ducts- Illuminated Glove Box
- Instrument Panel Bin, Driver And Passenger Door Bins
- Interior Trim -inc: Piano Black Instrument Panel Insert, Metal-Look Console Insert and Metal-Look Interior Accents
- Manual Adjustable Rear Head Restraints- Manual Air Conditioning
- Manual Tilt/Telescoping Steering Column- Passenger Seat- Perimeter Alarm
- Rear Cupholder- Seats w/Cloth Back Material
- Securilock Anti-Theft Ignition (pats) Engine Immobilizer- Systems Monitor
- Trip Computer- Urethane Gear Shift Knob

Exterior

- Compact Spare Tire Mounted Inside Under Cargo
- Tailgate/Rear Door Lock Included w/Power Door Locks
- Wheels: 15" Sparkle Silver Painted Aluminum
- Black Side Windows Trim and Black Front Windshield Trim
- Body-Colored Door Handles- Body-Colored Front Bumper
- Body-Colored Power Side Mirrors w/Convex Spotter and Manual Folding
- Body-Colored Rear Bumper w/Black Bumper Insert- Chrome Grille- Clearcoat Paint

Option Packages

Factory Installed Packages

ENGINE: 1.6L TI-VCT I-4

-inc: ecomode

TRANSMISSION: POWERSHIFT 6-SPD AUTO W/SELECTSHIFT

-inc: 3.90 Axle Ratio

\$1,095

Option Packages Total

\$1,095

- Fixed Rear Window w/Detroster
- Fully Automatic Aero-Composite Halogen Daytime Running Headlamps w/Delay-Off
- Fully Galvanized Steel Panels- Light Tinted Glass- Perimeter/Approach Lights
- Steel Spare Wheel- Tires: P185/60R15 BSW- Trunk Rear Cargo Access
- Variable Intermittent Wipers

Safety

- Power 1st Row Windows w/Driver 1-Touch Up/Down
- Power Door Locks w/Autolock Feature- Power Rear Windows
- Remote Keyless Entry w/Integrated Key Transmitter and Illuminated Entry
- Unique Cloth Front Bucket Seats -inc: embossed bolsters, 6-way manual (fore/aft, up/down, recline) driver seats, 4-way manual (fore/aft, recline) passenger seats, 2-way adjustable head restraints
- 1 Seatback Storage Pocket- 2 12V DC Power Outlets
- 60-40 Folding Bench Front Facing Fold Forward Seatback Premium Cloth Rear Seat
- Air Filtration- Analog Display- Cargo Space Lights
- Carpet Floor Trim and Carpet Trunk Lid/Rear Cargo Door Trim - Cloth Door Trim Insert
- Compass- Cruise Control w/Steering Wheel Controls- Day-Night Rearview Mirror
- Driver And Passenger Visor Vanity Mirrors- Driver Foot Rest- Driver Seat
- FOB Controls -inc: Trunk/Hatch/Tailgate- Fade-To-Off Interior Lighting
- Front And Rear Map Lights- Front Center Armrest- Front Cupholder
- Full Carpet Floor Covering -inc: Carpet Front Floor Mats - Full Cloth Headliner
- Full Floor Console w/Storage, Mini Overhead Console w/Storage and 2 12V DC Power Outlets
- Gauges -inc: Speedometer, Odometer, Tachometer, Trip Odometer and Trip Computer
- HVAC -inc: Underseat Ducts- Illuminated Glove Box
- Instrument Panel Bin, Driver And Passenger Door Bins
- Interior Trim -inc: Piano Black Instrument Panel Insert, Metal-Look Console Insert and Metal-Look Interior Accents
- Manual Adjustable Rear Head Restraints- Manual Air Conditioning
- Manual Tilt/Telescoping Steering Column- Passenger Seat- Perimeter Alarm
- Rear Cupholder- Seats w/Cloth Back Material
- Securilock Anti-Theft Ignition (pats) Engine Immobilizer- Systems Monitor
- Trip Computer- Urethane Gear Shift Knob

Mechanical

- Transmission: 5-Speed Manual- 12.4 Gal. Fuel Tank- 4.07 Axle Ratio
- 50-State Emissions System- 500CCA Maintenance-Free Battery w/Run Down Protection
- Electric Power-Assist Speed-Sensing Steering- Engine: 1.6L Ti-VCT I-4 -inc: ecomode
- Front Anti-Roll Bar
- Front Disc/Rear Drum Brakes w/4-Wheel ABS, Front Vented Discs, Brake Assist and Hill Hold Control
- Front-Wheel Drive- Gas-Pressurized Shock Absorbers- Single Stainless Steel Exhaust
- Strut Front Suspension w/Coil Springs- Torsion Beam Rear Suspension w/Coil Springs

Majestic Auto Sales Inc

Majestic Auto Sales Inc

View this car on our website at majestic-auto-sales.com/6752193

Website: majestic-auto-sales.com

Phone: (727) 709-2145

Map: 8801 66th St N, Pinellas Park, FL 33782

