

2018 GMC Sierra 1500 SLE

View this car on our website at workvansandtrucks.com/6749087/ebrochure



Our Price **\$34,450**

Retail Value ~~\$34,995~~

Specifications:

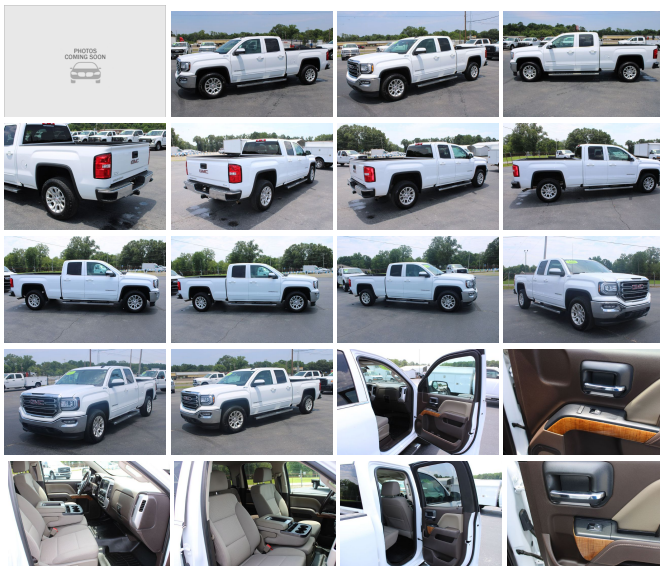
| | |
|--------------------|--|
| Year: | 2018 |
| VIN: | 1GTV2MEC6JZ297847 |
| Make: | GMC |
| Stock: | T2351 |
| Model/Trim: | Sierra 1500 SLE |
| Condition: | Pre-Owned |
| Body: | Pickup Truck |
| Exterior: | WHITE |
| Engine: | ENGINE, 5.3L ECOTEC3 V8, WITH ACTIVE FUEL MANAGEMENT, DIRECT INJECTION |
| Interior: | GRAY |
| Mileage: | 30,505 |
| Drivetrain: | 4 Wheel Drive |
| Economy: | City 16 / Highway 22 |

2018 GMC 1500 SEIRRA SLE EXT CAB SWB 4X4 SHORT BED PICKUP 5.3 GAS ENGINE, AUTOMATIC TRANSMISSION.

This 1/2 ton truck comes with Brown and tan interior, wood gran trim, Drivers Power Seat, Tilt and Telescopic Steering Wheel, Trailer Brake Controller, 4x4 shift knob, Phone Controls, Blue Tooth, Tow Haul Mode, Manual Shift Mode, Touch Screen Radio, am/fm/xm/radio, Back-up Camara, Weather Guard Floor Mats.

Fog Lights, Chrome Grill, Chrome Bumpers, Chrome Step Bars, Rear Mounted Tow Hitch, Drop in Bed Liner, Aluminum wheels, OnStar.

Current Oil and Filter Service.



Vehicle History Report : as Of 04/20/2024

CARFAX

Snapshot

2018 GMC SIERRA 1500 SLE



Damage reported: minor damage



MINOR MODERATE SEVERE

12 Service history records



2 Previous owners



Types of owners: Commercial, Personal



80,097 Last reported odometer reading



FREE CARFAX Report

See the full CARFAX Report for additional information

*carfax Snapshot is a reflection of available information on the date the report was pulled. carfax is constantly being updated with new information and is subject to change at any time.

Our Location :



2018 GMC Sierra 1500 SLE

T & B Auto Sales - 501-847-2727 - View this car on our website at workvansandtrucks.com/6749087/ebrochure

Installed Options

Interior

- Seats, front 40/20/40 split-bench, 3-passenger. Includes driver and front passenger recline with outboard head restraints and center fold-down armrest with storage. Includes manually adjustable driver lumbar, lockable storage compartment in seat cushion, and storage pockets
- OnStar 4G LTE and available built-in Wi-Fi hotspot offers a fast and reliable Internet connection for up to 7 devices; includes data trial for 3 months or 3GB (whichever comes first) DATA TRIAL OFFER GOOD THROUGH 4/30/2018 (Available Wi-Fi requires compatible mobile device, active OnStar service and data plan. Data plans provided by AT&T. Visit onstar.com for details and system limitations.)
- Floor mats, rubberized-vinyl front (Not available with (BG9) graphite-colored rubberized-vinyl floor covering.)
- Floor mats, rubberized-vinyl rear for Crew Cab and Double Cab models only (Not available with (BG9) graphite-colored rubberized-vinyl floor covering.)
- Steering column, manual Tilt-Wheel
- Steering wheel, leather-wrapped with audio and cruise controls- Door locks, power
- Remote Keyless Entry (Includes (A91) remote locking tailgate.)
- Cruise control, steering wheel-mounted- Air conditioning, single-zone
- Seat, rear 60/40 folding bench (folds up), 3-passenger (includes child seat top tether anchor) (Requires Crew Cab or Double Cab model.)
- Floor covering, color-keyed carpeting
- Instrumentation, 6-gauge cluster featuring speedometer, fuel level, engine temperature, tachometer, voltage and oil pressure
- Driver Information Center, 4.2-inch diagonal color display includes driver personalization,

Option Packages

Factory Installed Packages

ENGINE, 5.3L ECOTEC3 V8, WITH ACTIVE FUEL MANAGEMENT, DIRECT INJECTION

and Variable Valve Timing, includes aluminum block construction (355 hp [265 kW] @ 5600 rpm, 383 lb-ft of torque [518 Nm] @ 4100 rpm; more than 300 lb-ft of torque from 2000 to 5600 rpm)

Option Packages Total

\$1,195

warning messages and vehicle information

- Windows, power with driver express up and down and express down on all other windows
- Visors, driver and front passenger illuminated vanity mirrors
- Assist handle, front passenger on A-pillar

Exterior

- Wheels, 17" x 8" (43.2 cm x 20.3 cm) premium painted aluminum, bright machined
- Tires, P255/70R17 all-season, blackwall
- Tire, spare P255/70R17 all-season, blackwall (Included and only available with (RBZ) P255/70R17 all-season, blackwall tires.)
- Mirrors, outside heated power-adjustable (includes driver's side spotter mirror) (Body Color.)
- Wheelhouse liners, rear (Requires Crew Cab or Double Cab model.)
- Tire carrier lock keyed cylinder lock that utilizes same key as ignition and door
- Bumper, front chrome lower- Bumper, rear chrome with rear bumper corner steps
- CornerStep, rear bumper- Moldings, bodyside, body color- Grille surround, chrome
- Active Aero Shutters, front
- Headlamps, high intensity discharge (HID) projector-beam with LED signature
- Lamps, cargo area, cab mounted with switch on center switch bank
- Mirror caps, body-color (Deleted when (DPN) power camper mirrors are ordered.)
- Glass, deep-tinted- 4X4 chrome badge (Included and only available with 4X4 models.)
- LED Lighting, cargo box with switch on center switch bank
- Tailgate and bed rail protection caps, top
- Remote Locking Tailgate (Included and only available with (AQQ) Remote Keyless Entry.)
- Tailgate, EZ-Lift and Lower- Door handles, body-color

Safety

- Seats, front 40/20/40 split-bench, 3-passenger. Includes driver and front passenger recline with outboard head restraints and center fold-down armrest with storage. Includes manually adjustable driver lumbar, lockable storage compartment in seat cushion, and storage pockets
- OnStar 4G LTE and available built-in Wi-Fi hotspot offers a fast and reliable Internet connection for up to 7 devices; includes data trial for 3 months or 3GB (whichever comes first) DATA TRIAL OFFER GOOD THROUGH 4/30/2018 (Available Wi-Fi requires compatible mobile device, active OnStar service and data plan. Data plans provided by AT&T. Visit onstar.com for details and system limitations.)
- Floor mats, rubberized-vinyl front (Not available with (BG9) graphite-colored rubberized-vinyl floor covering.)
- Floor mats, rubberized-vinyl rear for Crew Cab and Double Cab models only (Not available with (BG9) graphite-colored rubberized-vinyl floor covering.)
- Steering column, manual Tilt-Wheel
- Steering wheel, leather-wrapped with audio and cruise controls- Door locks, power
- Remote Keyless Entry (Includes (A91) remote locking tailgate.)
- Cruise control, steering wheel-mounted- Air conditioning, single-zone
- Seat, rear 60/40 folding bench (folds up), 3-passenger (includes child seat top tether anchor) (Requires Crew Cab or Double Cab model.)
- Floor covering, color-keyed carpeting
- Instrumentation, 6-gauge cluster featuring speedometer, fuel level, engine temperature, tachometer, voltage and oil pressure
- Driver Information Center, 4.2-inch diagonal color display includes driver personalization, warning messages and vehicle information
- Windows, power with driver express up and down and express down on all other windows
- Visors, driver and front passenger illuminated vanity mirrors
- Assist handle, front passenger on A-pillar

Mechanical

- Engine, 4.3L EcoTec3 V6 with Active Fuel Management Direct Injection and Variable Valve Timing, includes aluminum block construction with FlexFuel capability, capable of running on unleaded or up to 85% ethanol (285 hp [212 kW] @ 5300 rpm, 305 lb-ft of torque [413 Nm] @ 3900 rpm) (Includes (FHS) E85 FlexFuel capability. Not available on T*15743 models.)
- Transmission, 6-speed automatic, electronically controlled with overdrive and tow/haul mode. Includes Cruise Grade Braking and Powertrain Grade Braking
- Differential, heavy-duty locking rear (Standard on 4WD models. Included on (PDU) SLE Value Package, (PDA) Texas SLE Value Package or (NHT) Max Trailering Package.) (Standard on 4WD models. Included on 2WD models with (PDU) SLE Value Package, (PDA) Texas SLE Value Package or (NHT) Max Trailering Package.)
- Recovery hooks, front, frame-mounted, black (Included with 4WD models or (SXL) Elevation Edition on 2WD models.) (Included with (SXL) Elevation Edition on 2WD models. Standard with 4WD models.)
- Rear axle, 3.42 ratio (Standard on 4WD V6 models. Available with (L83) 5.3L EcoTec3 V8 engine.)
- Pickup box (Deleted when (ZW9) pickup box delete is ordered on Regular Cab models.)
- GVWR, 7100 lbs. (3221 kg) (Requires a Crew Cab or Double Cab 4WD model and (LV3) 4.3L EcoTec3 V6 engine.)
- Transfer case, active, 2-speed electronic Autotrac with rotary controls, includes neutral

position for dinghy towing (Included with 4WD models only.)

- Suspension Package- Four wheel drive- Cooling, external engine oil cooler
- Alternator, 150 amps
- Battery, heavy-duty 730 cold-cranking amps/70 Amp-hr, maintenance-free with rundown protection and retained accessory power
- Frame, fully-boxed, hydroformed front section- Cargo tie downs (4), movable upper
- Steering, Electric Power Steering (EPS) assist, rack-and-pinion
- Brakes, 4-wheel disc with DURALIFE rotors, 4-wheel antilock- Capless Fuel Fill
- Exhaust, aluminized stainless-steel muffler and tailpipe



workvansandtrucks.com

501-847-2727

25637 I-30

Bryant, AR 72022

© 2024 AutoRevo - All rights reserved. - Powered by AutoRevo