

2018 Ram 2500 Tradesman

View this car on our website at workvansandrucks.com/6746776/ebrochure

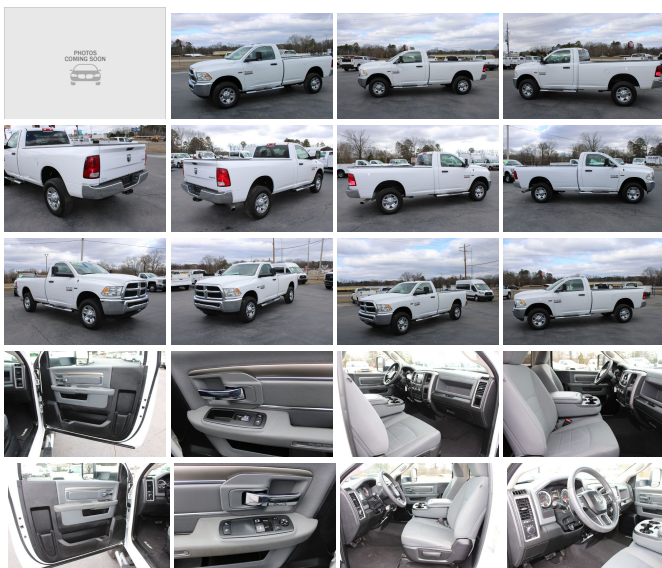


Our Price **\$29,694**

Retail Value ~~\$29,995~~

Specifications:

Year:	2018
VIN:	3C6MR5AJ2JG117210
Make:	Ram
Stock:	T2346
Model/Trim:	2500 Tradesman
Condition:	Pre-Owned
Body:	Pickup Truck
Exterior:	WHITE
Engine:	ENGINE: 6.4L HD V8 HEMI W/MDS
Interior:	GRAY
Mileage:	35,390
Drivetrain:	4 Wheel Drive



2018 RAM 2500 RAM HD ST REG CAB 4X4 6.4 GAS ENGINE AUTOMATIC TRANSMISSION, this 3/4 ton work truck comes with Power Windows, Power Door Locks, Power Mirrors, Tow Mirrors, Heated Mirrors, Tilt Steering Wheel, Cruise Control, Manual Shift Mode, Tow Haul Mode, am/fm/xm/touch screen radio, Electric shift 4x4 Switch, Key-Fob, Keyless entry, Traction Control, Step Bars, Chrome Grill, Chrome Bumpers, Cloth Seat, Black Carpet,

Aftermarket Trailer Brake Controller, Tow Package.

Current Oil and Filter Service.

Tire tread depth Left Front 8/32, Right Front 8/32, Left Rear 5/32 Right Rear 5/32

Our Location :



2018 Ram 2500 Tradesman

T & B Auto Sales - 501-847-2727 - View this car on our website at workvansandtrucks.com/6746776/ebrochure

Installed Options

Interior

- Driver Seat- Passenger Seat- Manual Tilt Steering Column
- Gauges -inc: Speedometer, Odometer, Voltmeter, Oil Pressure, Engine Coolant Temp, Tachometer, Oil Temperature, Transmission Fluid Temp, Engine Hour Meter and Trip Odometer
- Cruise Control w/Steering Wheel Controls- Manual Air Conditioning- Glove Box
- Interior Trim -inc: Metal-Look Instrument Panel Insert and Chrome/Metal-Look Interior Accents
- Full Cloth Headliner- Urethane Gear Shift Knob
- Heavy Duty Vinyl 40/20/40 Split Bench Seat- Day-Night Auto-Dimming Rearview Mirror
- 2 12V DC Power Outlets- Partial Floor Console w/Storage and 2 12V DC Power Outlets
- Fade-To-Off Interior Lighting- Full Vinyl/Rubber Floor Covering- Pickup Cargo Box Lights
- Electronically Controlled Throttle
- Instrument Panel Bin, Dashboard Storage, Driver And Passenger Door Bins
- Manual 1st Row Windows- Delayed Accessory Power- Systems Monitor- Analog Display
- Seats w/Vinyl Back Material- Manual Adjustable Front Head Restraints
- Front Armrest w/Cupholders- Manual Adjust Seats- 40/20/40 Split Bench Seat
- Engine Immobilizer

Exterior

- Wheels: 17" x 7.5" Steel Styled- Tires: LT245/70R17E BSW AS- Regular Box Style
- Center Hub- Steel Spare Wheel- Full-Size Spare Tire Stored Underbody w/Crankdown
- Clearcoat Paint- Black Front Bumper- Black Rear Step Bumper
- Black Side Windows Trim and Black Front Windshield Trim - Black Door Handles
- Black Manual Side Mirrors w/Manual Folding- Fixed Rear Window- Light Tinted Glass
- Variable Intermittent Wipers- Fully Galvanized Steel Panels- Black Grille
- Front License Plate Bracket- Tailgate Rear Cargo Access
- Manual Tailgate/Rear Door Lock
- Fully Automatic Aero-Composite Halogen Headlamps w/Delay-Off
- Cross Members w/Flak Mount Steel Light- Next Generation Engine Controller

- Cargo Lamp w/High Mount Stop Light- Next Generation Engine Controller

Safety

- Driver Seat- Passenger Seat- Manual Tilt Steering Column
- Gauges -inc: Speedometer, Odometer, Voltmeter, Oil Pressure, Engine Coolant Temp, Tachometer, Oil Temperature, Transmission Fluid Temp, Engine Hour Meter and Trip Odometer
- Cruise Control w/Steering Wheel Controls- Manual Air Conditioning- Glove Box
- Interior Trim -inc: Metal-Look Instrument Panel Insert and Chrome/Metal-Look Interior Accents
- Full Cloth Headliner- Urethane Gear Shift Knob
- Heavy Duty Vinyl 40/20/40 Split Bench Seat- Day-Night Auto-Dimming Rearview Mirror
- 2 12V DC Power Outlets- Partial Floor Console w/Storage and 2 12V DC Power Outlets
- Fade-To-Off Interior Lighting- Full Vinyl/Rubber Floor Covering- Pickup Cargo Box Lights
- Electronically Controlled Throttle
- Instrument Panel Bin, Dashboard Storage, Driver And Passenger Door Bins
- Manual 1st Row Windows- Delayed Accessory Power- Systems Monitor- Analog Display
- Seats w/Vinyl Back Material- Manual Adjustable Front Head Restraints
- Front Armrest w/Cupholders- Manual Adjust Seats- 40/20/40 Split Bench Seat
- Engine Immobilizer

Mechanical

- Engine: 5.7L V8 HEMI VVT- Transmission: 6-Speed Automatic (66RFE)- 3.73 Axle Ratio
- GVWR: 9,000 lbs- 50 State Emissions
- Transmission w/Driver Selectable Mode, Sequential Shift Control and Oil Cooler
- Manual Transfer Case- Part-Time Four-Wheel Drive
- 730CCA Maintenance-Free Battery w/Run Down Protection- 160 Amp Alternator
- Front Bumper Sight Shields- Tip Start
- Class V Towing Equipment -inc: Hitch and Trailer Sway Control - Trailer Wiring Harness
- 2680# Maximum Payload- HD Shock Absorbers- Front Anti-Roll Bar- HD Suspension
- Hydraulic Power-Assist Steering- 32 Gal. Fuel Tank- Single Stainless Steel Exhaust
- Auto Locking Hubs- Multi-Link Front Suspension w/Coil Springs
- Multi-Link Rear Suspension w/Coil Springs
- 4-Wheel Disc Brakes w/4-Wheel ABS, Front And Rear Vented Discs, Brake Assist and Hill Hold Control

Option Packages

Factory Installed Packages

ENGINE: 6.4L HD V8 HEMI W/MDS
 -inc: 11.50 Single Wheel Rear Axle, 180 Amp Alternator, GVWR: 10,000 lbs, Hemi Badge \$500

Option Packages Total \$500



workvansandtrucks.com

501-847-2727

25637 I-30

Bryant, AR 72022

© 2021 AutoRevo - All rights reserved. - Powered by AutoRevo

