

njtruckking.com
856-693-3181
1229 Broadway
Westville, New Jersey
08093

King of Cars and
Trucks

2011 DODGE CHALLENGER SRT-8 392 LIMITED EDITION ONLY 19K ACTUAL MILES

View this car on our website at njtruckking.com/6743056/ebrochure



Our Price **\$29,900**

Specifications:

Year:	2011
VIN:	2B3CJ7DJ9BH589846
Make:	DODGE CHALLENGER SRT-8
Model/Trim:	392 LIMITED EDITION ONLY 19K ACTUAL MILES
Condition:	Pre-Owned
Body:	Coupe
Exterior:	Green
Engine:	6.4L SRT MDS HEMI V8 ENGINE
Interior:	Black Leather
Mileage:	19,162
Drivetrain:	Rear Wheel Drive
Economy:	City 14 / Highway 22

2011 DODGE CHALLENGER SRT-8

LIMITED EDITION

~GREEN WITH ENVY~

392 HEMI

AUTOMATIC TRANSMISSION

ONLY 19,162 ORIGINAL / ACTUAL MILES

1-OWNER CLEAN CARFAX CAR

ALL THE OPTIONS

BEST COLOR COMBO

CAR LOOKS RUNS AND DRIVES LIKE NEW

GARAGE KEPT

OWNERS MANUALS

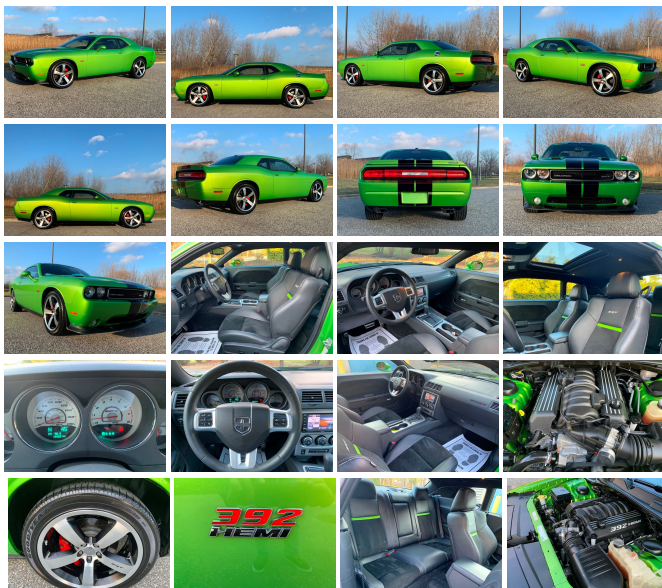
MINT CONDITION

WILL NOT LAST !

BEST OF THE BEST

\$29,900

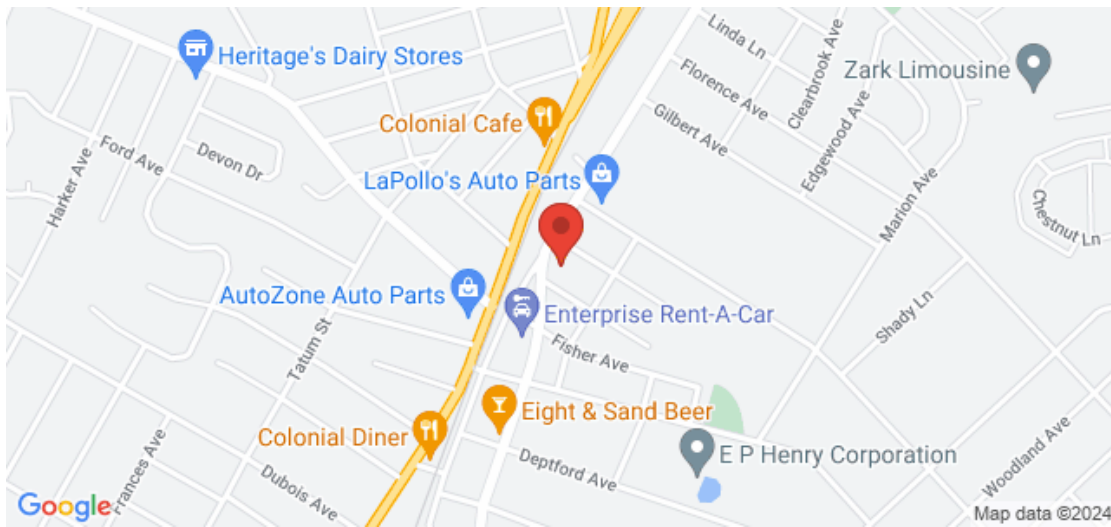
CALL / TEXT ZACH @ 609-504-8808 WITH ANY QUESTIONS



2011 DODGE CHALLENGER SRT-8 392 LIMITED EDITION ONLY 19K ACTUAL MILES

King of Cars and Trucks - 856-693-3181 - View this car on our website at njtruckking.com/6743056/ebrochure

Our Location :



2011 DODGE CHALLENGER SRT-8 392 LIMITED EDITION ONLY 19K ACTUAL MILES

King of Cars and Trucks - 856-693-3181 - View this car on our website at njtruckking.com/6743056/ebrochure

Installed Options

Interior

- Keyless entry- Keyless go- Luxury front & rear floor mats
- Premium leather-trimmed bucket seats- Remote proximity keyless entry
- Sentry Key theft deterrent system- Speed-sensitive pwr locks- 12V pwr outlet
- 180-MPH speedometer- 6-way pwr driver seat- Active head restraints
- Air conditioning w/auto temp control- Auto-dimming rearview mirror w/microphone
- Bright pedals- Cargo compartment dress-up- Cell phone storage- Floor carpet
- Floor console w/armrest- Front & rear climate control outlets- Front reading/map lights
- Heated front seats- Illuminated cupholders- Illuminated door pull handles
- Illuminated entry- Instrument cluster w/performance display screen
- Leather-wrapped shift knob- Leather-wrapped steering wheel- Passenger assist handle
- Pwr 4-way driver lumbar- Pwr accessory delay- Pwr trunklid release
- Pwr windows w/front 1-touch down- Rear 60/40 split-folding bench seat
- Rear courtesy lamps- Rear seat armrest w/cupholder- Rear window defroster
- Satin silver lock knobs- Security alarm- Silver metal brush center stack bezel
- Speed control- Steering wheel audio controls- Temp & compass gauge
- Tilt/telescopic steering column- Traveler/mini trip computer- Trunk lamp
- UConnect hands-free communication w/Bluetooth- Universal garage door opener
- Vehicle info center- Visors w/illuminated mirrors

Exterior

- 20" x 9.0" aluminum SRT design wheels - P245/45ZR20 all-season performance tires
- Automatic headlamps- Body-color door handles- Body-color fascias- Body-color mirrors
- Bright fuel filler door- Dual black center stripes- Fog lamps
- Fold-away pwr heated mirrors- Functional hood scoop- HID headlamps- Rear spoiler
- Satin chrome grill- Solar control glass- Spare tire delete- Tire service kit
- Variable-intermittent wipers

Safety

- Keyless entry- Keyless go- Luxury front & rear floor mats
- Premium leather-trimmed bucket seats- Remote proximity keyless entry
- Sentry Key theft deterrent system- Speed-sensitive pwr locks- 12V pwr outlet
- 180-MPH speedometer- 6-way pwr driver seat- Active head restraints
- Air conditioning w/auto temp control- Auto-dimming rearview mirror w/microphone
- Bright pedals- Cargo compartment dress-up- Cell phone storage- Floor carpet
- Floor console w/armrest- Front & rear climate control outlets- Front reading/map lights
- Heated front seats- Illuminated cupholders- Illuminated door pull handles
- Illuminated entry- Instrument cluster w/performance display screen
- Leather-wrapped shift knob- Leather-wrapped steering wheel- Passenger assist handle
- Pwr 4-way driver lumbar- Pwr accessory delay- Pwr trunklid release
- Pwr windows w/front 1-touch down- Rear 60/40 split-folding bench seat
- Rear courtesy lamps- Rear seat armrest w/cupholder- Rear window defroster
- Satin silver lock knobs- Security alarm- Silver metal brush center stack bezel
- Speed control- Steering wheel audio controls- Temp & compass gauge
- Tilt/telescopic steering column- Traveler/mini trip computer- Trunk lamp
- UConnect hands-free communication w/Bluetooth- Universal garage door opener
- Vehicle info center- Visors w/illuminated mirrors

Mechanical

- 6-speed manual Tremec transmission- 6.4L SRT Hemi V8 engine- 220-amp alternator
- 3.92 axle ratio- 4-wheel anti-lock performance disc brakes
- 730 CCA maintenance-free battery- Anti-spin rear differential- Dual bright exhaust tips
- Dual rear exhaust- Engine oil cooler- Independent high performance suspension
- Performance tuned pwr rack & pinion steering - Rear stabilizer bar- Rear wheel drive
- Severe duty II engine cooling

Option Packages

Factory Installed Packages

6.4L SRT MDS HEMI V8 ENGINE

1229 Broadway
Westville, New Jersey 08093

© 2024 AutoRevo - All rights reserved. - Powered by AutoRevo