



## 2008 Land Rover Range Rover Sport SC

**Our Price \$10,900**

View this vehicle on our website at [ssauto-sales.com](http://ssauto-sales.com)

S & S Auto Sales LLC

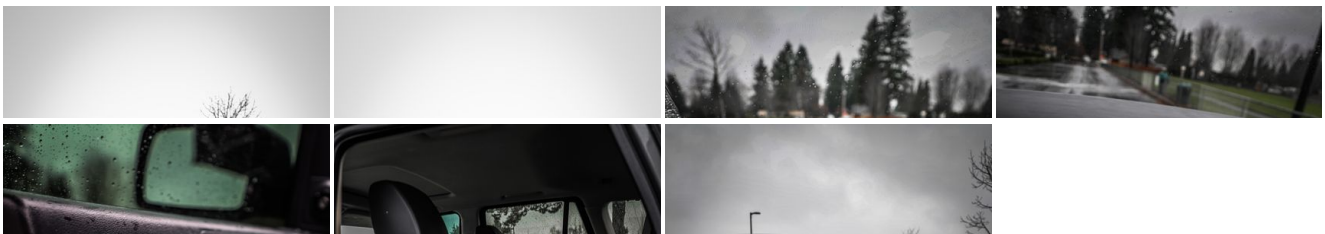
[\(360\) 921-6277](tel:3609216277)

212 W 13th St, Vancouver, WA 98660

[Photos](#)

[Details](#)

[Contact](#)



**Specifications:**

|                    |                             |
|--------------------|-----------------------------|
| <b>Year:</b>       | 2008                        |
| <b>VIN:</b>        | SALSH23448A170761           |
| <b>Make:</b>       | Land Rover                  |
| <b>Model/Trim:</b> | Range Rover Sport SC        |
| <b>Condition:</b>  | Pre-Owned                   |
| <b>Body:</b>       | SUV                         |
| <b>Exterior:</b>   | Gray                        |
| <b>Engine:</b>     | 4.2L supercharged V8 engine |
| <b>Interior:</b>   | Black Leather               |
| <b>Mileage:</b>    | 133,234                     |
| <b>Drivetrain:</b> | 4 Wheel Drive               |
| <b>Economy:</b>    | City 12 / Highway 18        |

## Vehicle Description

THIS IS A 2008 Land Rover Range Rover Sport SC in very good condition well kept

### Installed Options

#### Interior

- Cruise control w/steering wheel mounted controls- Ebony center stack/console trim
- Perimetric alarm system w/keyless entry
- Pwr central locking w/emergency key entry via concealed panel in drivers door
- Seating-inc: 8-way driver/6-way pwr front passenger leather sport bucket seats w/heated surfaces, folding armrests, adjustable head restraints
- Straight grained walnut wood trim-inc: center console, door inserts - 12V pwr outlet
- 2nd row auxiliary audio input
- 3-driver memory-inc: driver seat, electric steering column, exterior mirrors
- 550-watt Harman/Kardon LOGIC7 audio system-inc: AM/FM stereo, 6-disc CD changer, (14) speakers
- 65/35 split folding heated rear seat w/adjustable head restraints
- Auto-dimming rearview mirror- Center console storage bin
- Cupholders-inc: (3) front, (2) rear- Dual glass-mounted antenna system
- Dual-zone automatic climate control w/recirculation- Front door map pockets
- Front seatback storage pockets- Front/rear park distance control
- Front/rear window defogger- Homelink system for garage doors & security gates
- Instrumentation-inc: tachometer, fuel filler door indicator, comprehensive message center w/trip computer, analog clock
- Leather-wrapped pwr tilt/telescopic steering wheel
- Noble finish trim accents on speaker/vent bezels, gear knob, glove box release
- Outside temp display- Personal telephone integration system
- Premium navigation system w/4X4 info system
- Pwr windows-inc: retained accessory pwr, one-touch open/close, anti-trap feature
- Sirius satellite radio- Steering wheel mounted audio controls
- Tire pressure monitoring system- Voice recognition & driver microphone

#### Exterior

- Bi-Xenon single-piece headlamps w/auto headlamps, pwr washers
- Deep-tinted glass aft of B-pillar- Front/rear fog lamps- Heated washer jets
- Heated windscreen- Intermittent rear window washer/wiper- Puddle/footwell lamps
- Pwr folding heated mirrors w/programmable auto dipping of passenger mirror in reverse
- Pwr sunroof-inc: deep-tinted glass, retained accessory pwr, one-touch open/close, anti-trap feature
- Rain-sensing front windshield wipers- Single tailgate w/opening glass
- Unique finish grille & vents

#### Safety

- Cruise control w/steering wheel mounted controls- Ebony center stack/console trim
- Perimetric alarm system w/keyless entry
- Pwr central locking w/emergency key entry via concealed panel in drivers door
- Seating-inc: 8-way driver/6-way pwr front passenger leather sport bucket seats w/heated surfaces, folding armrests, adjustable head restraints
- Straight grained walnut wood trim-inc: center console, door inserts - 12V pwr outlet

- Straight grained walnut wood trim-inc: center console, door inserts - 12v pwr outlet
- 2nd row auxiliary audio input
- 3-driver memory-inc: driver seat, electric steering column, exterior mirrors
- 550-watt Harman/Kardon LOGIC7 audio system-inc: AM/FM stereo, 6-disc CD changer, (14) speakers
- 65/35 split folding heated rear seat w/adjustable head restraints
- Auto-dimming rearview mirror- Center console storage bin
- Cupholders-inc: (3) front, (2) rear- Dual glass-mounted antenna system
- Dual-zone automatic climate control w/recirculation- Front door map pockets
- Front seatback storage pockets- Front/rear park distance control
- Front/rear window defogger- Homelink system for garage doors & security gates
- Instrumentation-inc: tachometer, fuel filler door indicator, comprehensive message center w/trip computer, analog clock
- Leather-wrapped pwr tilt/telescopic steering wheel
- Noble finish trim accents on speaker/vent bezels, gear knob, glove box release
- Outside temp display- Personal telephone integration system
- Premium navigation system w/4X4 info system
- Pwr windows-inc: retained accessory pwr, one-touch open/close, anti-trap feature
- Sirius satellite radio- Steering wheel mounted audio controls
- Tire pressure monitoring system- Voice recognition & driver microphone

## Mechanical

- 20" aluminum alloy wheels- 4-channel 4-wheel all-terrain anti-lock brakes (ABS)
- 4-wheel electronic traction control (4ETC)- Dynamic stability control (DSC)
- 2-speed electronic transfer gearbox-inc: infinitely variable locking center differential, Terrain Response system
- 275/40R20 tires- 4.2L supercharged V8 engine
- 6-speed automatic transmission w/Commandshift- Active roll mitigation (ARM)
- Chrome exhaust extensions- Cornering brake control (CBC)
- Distributorless ignition system-inc: 4 knock sensors, dual mode electronic throttle, engine drag torque control
- Double-wishbone front suspension-inc: double-pivot lower arms, gas filled shock absorbers
- Double-wishbone rear suspension-inc: gas filled shock absorbers
- Dynamic response system & Brembo brand brakes
- Electronic brakeforce distribution (EBD)- Electronic parking brake
- Emergency brake assist (EBA)
- Enhanced electronic air suspension (EAS) system-inc: automatic load-leveling, multiple modes, terrain-sensing software & cross-link valves for improved off-road performance, long-travel air springs
- Hill descent control (HDC)- Integral class III trailer towing hitch receiver
- Monocoque integrated body/chassis w/(3) steel subframes - Permanent 4-wheel drive
- Pwr rack & pinion steering- Pwr ventilated front, solid rear disc brakes
- Reduced section spare tire

S & S Auto Sales LLC

S & S Auto Sales LLC

View this car on our website at [ssauto-sales.com/6739171](http://ssauto-sales.com/6739171)

Website: [ssauto-sales.com](http://ssauto-sales.com)

Phone: (360) 921-6277

Map: [212 W 13th St , Vancouver, WA 98660](#)

