



2014 Honda CR-V EX-L

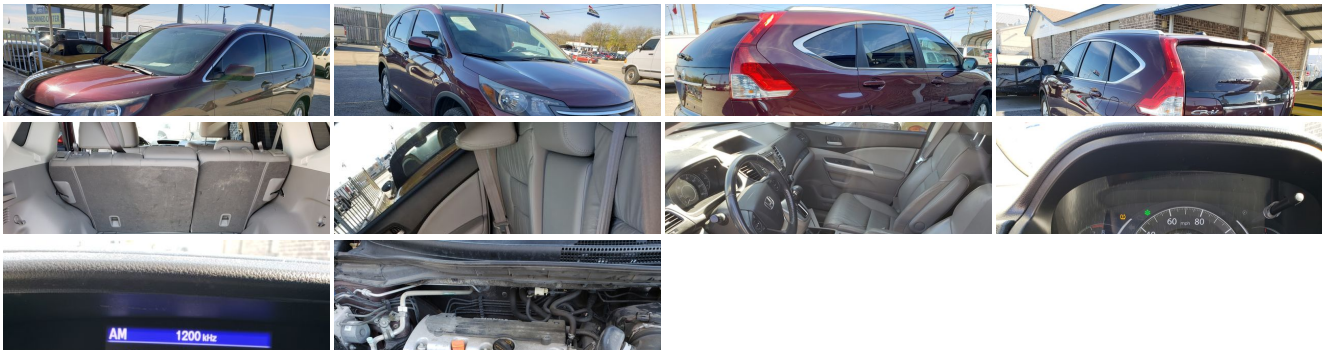
Our Price \$15,950

View this vehicle on our website at randyadamsinc.com

(830) 625-7159

1687 Business Loop 35 S , New Braunfels, TX 78130

Photos
Details
Contact



Specifications:

Year:	2014
VIN:	5J6RM3H7XEL012798
Make:	Honda

Model/Trim:	CR-V EX-L
Condition:	Pre-Owned
Body:	SUV
Exterior:	Red
Engine:	Engine: 2.4L I-4 16-Valve DOHC i-VTEC
Interior:	Gray Leather
Mileage:	77,300
Drivetrain:	Front Wheel Drive
Economy:	City 23 / Highway 31

Vehicle Description

Installed Options

Interior

- Gauges -inc: Speedometer, Odometer, Engine Coolant Temp, Tachometer, Trip Odometer and Trip Computer
- Leather-Trimmed Seats- Power 1st Row Windows w/Driver 1-Touch Up/Down
- Power Door Locks w/Autolock Feature
- Power Rear Windows and Fixed 3rd Row Windows
- Remote Keyless Entry w/Integrated Key Transmitter, Illuminated Entry, Illuminated Ignition Switch and Panic Button
- Trip Computer- 2 12V DC Power Outlets- 2 Seatback Storage Pockets
- 4-Way Passenger Seat -inc: Manual Recline and Fore/Aft Movement
- 60-40 Folding Split-Bench Front Facing Flip Forward Cushion/Seatback Rear Seat
- Air Filtration- Analog Display- Cargo Space Lights- Carpet Floor Trim- Compass
- Cruise Control w/Steering Wheel Controls- Day-Night Rearview Mirror
- Delayed Accessory Power
- Driver And Front Passenger Armrests and Rear Center Armrest
- Driver And Passenger Visor Vanity Mirrors w/Driver And Passenger Illumination
- Driver Foot Rest- Driver Seat- Engine Immobilizer- Fade-To-Off Interior Lighting
- Front Cupholder- Front Map Lights
- Full Carpet Floor Covering -inc: Carpet Front And Rear Floor Mats - Full Cloth Headliner
- Full Floor Console w/Covered Storage, Mini Overhead Console w/Storage, Conversation Mirror and 2 12V DC Power Outlets
- HVAC -inc: Underseat Ducts
- Heated Front Bucket Seats -inc: driver's seat w/10-way power adjustment and power lumbar support
- Instrument Panel Bin, Driver / Passenger And Rear Door Bins
- Integrated Navigation System w/Voice Activation
- Interior Trim -inc: Simulated Wood Instrument Panel Insert, Metal-Look Door Panel Insert, Metal-Look Console Insert and Metal-Look Interior Accents
- Leather Gear Shift Knob- Leather/Metal-Look Steering Wheel
- Leatherette Door Trim Insert- Locking Glove Box
- Manual Adjustable Front Head Restraints and Manual Adjustable Rear Head Restraints
- Manual Tilt/Telescoping Steering Column- Outside Temp Gauge- Perimeter Alarm
- Rear Cupholder- Remote Releases -Inc: Mechanical Fuel- Roll-Up Cargo Cover
- Seats w/Vinyl Back Material- Valet Function
- Voice Activated Dual Zone Front Automatic Air Conditioning

Exterior

- Tailgate/Rear Door Lock Included w/Power Door Locks - 6.5" Wheels w/Silver Accents
- Black Bodyside Cladding and Black Wheel Well Trim - Body-Colored Door Handles
- Body-Colored Front Bumper w/Black Rub Strip/Fascia Accent
- Body-Colored Power Heated Side Mirrors w/Convex Spotter and Manual Folding
- Body-Colored Rear Bumper w/Black Rub Strip/Fascia Accent- Chrome Grille
- Chrome Side Windows Trim and Black Front Windshield Trim - Clearcoat Paint
- Compact Spare Tire Mounted Inside Under Cargo- Deep Tinted Glass
- Express Open/Close Sliding And Tilting Glass 1st Row Sunroof w/Sunshade
- Fixed Rear Window w/Fixed Interval Wiper, Heated Wiper Park and Defroster
- Front Fog Lamps- Fully Galvanized Steel Panels- Liftgate Rear Cargo Access
- Programmable Aero-Composite Halogen Daytime Running Headlamps w/Delay-Off
- Roof Rack Rails Only- Speed Sensitive Variable Intermittent Wipers
- Steel Spare Wheel- Tires: P225/65R17 102T All-Season- Wheels: 17" 10-Spoke Alloy

Safety

- Gauges -inc: Speedometer, Odometer, Engine Coolant Temp, Tachometer, Trip Odometer and Trip Computer
- Leather-Trimmed Seats- Power 1st Row Windows w/Driver 1-Touch Up/Down
- Power Door Locks w/Autolock Feature
- Power Rear Windows and Fixed 3rd Row Windows
- Remote Keyless Entry w/Integrated Key Transmitter, Illuminated Entry, Illuminated Ignition Switch and Panic Button
- Trip Computer- 2 12V DC Power Outlets- 2 Seatback Storage Pockets
- 4-Way Passenger Seat -inc: Manual Recline and Fore/Aft Movement
- 60-40 Folding Split-Bench Front Facing Flip Forward Cushion/Seatback Rear Seat
- Air Filtration- Analog Display- Cargo Space Lights- Carpet Floor Trim- Compass
- Cruise Control w/Steering Wheel Controls- Day-Night Rearview Mirror
- Delayed Accessory Power
- Driver And Front Passenger Armrests and Rear Center Armrest
- Driver And Passenger Visor Vanity Mirrors w/Driver And Passenger Illumination
- Driver Foot Rest- Driver Seat- Engine Immobilizer- Fade-To-Off Interior Lighting
- Front Cupholder- Front Map Lights
- Full Carpet Floor Covering -inc: Carpet Front And Rear Floor Mats - Full Cloth Headliner
- Full Floor Console w/Covered Storage, Mini Overhead Console w/Storage, Conversation Mirror and 2 12V DC Power Outlets
- HVAC -inc: Underseat Ducts
- Heated Front Bucket Seats -inc: driver's seat w/10-way power adjustment and power lumbar support
- Instrument Panel Bin, Driver / Passenger And Rear Door Bins
- Integrated Navigation System w/Voice Activation
- Interior Trim -inc: Simulated Wood Instrument Panel Insert, Metal-Look Door Panel Insert, Metal-Look Console Insert and Metal-Look Interior Accents
- Leather Gear Shift Knob- Leather/Metal-Look Steering Wheel
- Leatherette Door Trim Insert- Locking Glove Box
- Manual Adjustable Front Head Restraints and Manual Adjustable Rear Head Restraints
- Manual Tilt/Telescoping Steering Column- Outside Temp Gauge- Perimeter Alarm
- Rear Cupholder- Remote Releases -Inc: Mechanical Fuel- Roll-Up Cargo Cover
- Seats w/Vinyl Back Material- Valet Function
- Voice Activated Dual Zone Front Automatic Air Conditioning

Mechanical

- 15.3 Gal. Fuel Tank- 36-Amp/Hr 410CCA Maintenance-Free Battery
- 4-Wheel Disc Brakes w/4-Wheel ABS, Front Vented Discs, Brake Assist and Hill Hold Control
- 4.44 Axle Ratio- 850# Maximum Payload
- Electric Power-Assist Speed-Sensing Steering- Engine: 2.4L I-4 16-Valve DOHC i-VTEC
- Front And Rear Anti-Roll Bars- Front-Wheel Drive- GVWR: 4,464 lbs
- Gas-Pressurized Shock Absorbers- Multi-Link Rear Suspension w/Coil Springs
- Single Stainless Steel Exhaust- Strut Front Suspension w/Coil Springs
- Transmission w/Driver Selectable Mode
- Transmission: 5-Speed Automatic -inc: grade logic control

Purchase prices do not include taxes, title, license, inspection or doc fee. It is the customer's sole responsibility to verify the accuracy of the price and existence and condition of any equipment listed. Dealer is not responsible for any typographical, technical or misprint errors on prices or equipment. This site and all information and materials appearing on it, are presented to the user "as is" without warranty of any kind, either express or implied. Mileage posted may vary slightly due to local test driving, in-transit repairs or road testing. Pricing subject to change without notice. All vehicles are subject to prior sale.

Randy Adams Inc.

View this car on our website at randyadamsinc.com/6737898

Website: randyadamsinc.com

Phone: (830) 625-7159

Map: [1687 Business Loop 35 S, New Braunfels, TX 78130](#)

