

# 2020 Jeep Wrangler JL Unlimited Rubicon 4X4 SKY TOP,LIFTED,BUMPERS,LED'S

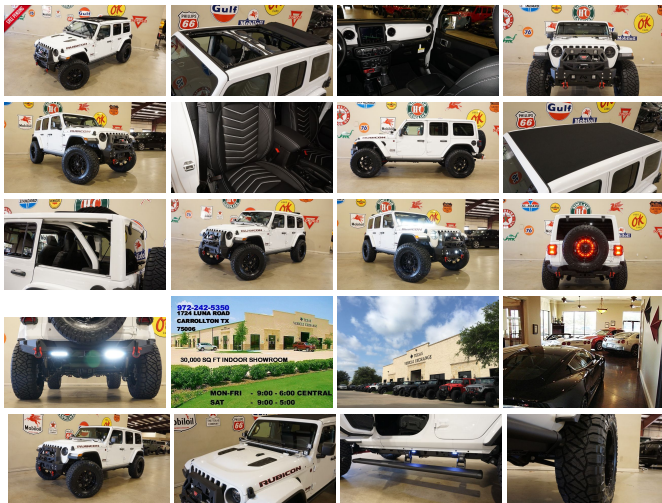
View this car on our website at [tveauto.com/6735286/ebrochure](http://tveauto.com/6735286/ebrochure)



Our Price **\$76,900**

## Specifications:

<b>Year:</b>	2020
<b>VIN:</b>	1C4HJXFG5LW178632
<b>Make:</b>	Jeep
<b>Stock:</b>	178632
<b>Model/Trim:</b>	Wrangler JL Unlimited Rubicon 4X4 SKY TOP,LIFTED,BUMPERS,LED'S
<b>Condition:</b>	Pre-Owned
<b>Body:</b>	SUV
<b>Exterior:</b>	Bright White Clearcoat
<b>Engine:</b>	ENGINE: 3.6L V6 24V VVT UPG I W/ESS
<b>Interior:</b>	Black Leather
<b>Transmission:</b>	TRANSMISSION: 8-SPEED AUTOMATIC (850RE)
<b>Mileage:</b>	36
<b>Drivetrain:</b>	4 Wheel Drive
<b>Economy:</b>	City 17 / Highway 22



NATION WIDE FINANCING

SUBMIT CREDIT APP [WWW.TVEAUTO.COM](http://WWW.TVEAUTO.COM)

OR CALL 972-242-5350

**"BRIGHT WHITE CLEAR COAT EDITION"**  
CUSTOM BUILT 2020 JEEP WRANGLER JL  
UNLIMITED RUBICON 4X4 WITH 24R  
PACKAGE

**UPGRADES INCLUDE:**

- \* BRIGHT WHITE CLEAR COAT
- \* SKY ONE-TOUCH POWER TOP WITH REMOVABLE REAR QUARTER WINDOWS
- \* CUSTOM ALEA BLACK LEATHER WITH WHITE STITCHING
- \* FACTORY REMOTE START
- \* REMOTE PROXIMITY KEYLESS ENTRY
- \* COLD WEATHER GROUP
- \* LED LIGHTING GROUP
- \* SAFETY GROUP
- \* FACTORY 8.4 INCH TOUCH SCREEN NAVIGATION WITH HD AM/FM/SIRIUS STEREO & ALPINE PREMIUM AUDIO SYSTEM
- \* FACTORY BACK-UP CAMERA
- \* U-CONNECT
- \* (4.10 AXLE RATIO)
- \* FAB FOURS "FULL METAL JACKET" STUBBY WINCH BUMPER WITH MODIFIER
- \* 4 RIGID INDUSTRIES LED D2 LIGHTS IN FRONT BUMPER
- \* FRONT D-RINGS & ISOLATORS (RED)
- \* WARN ZEON 8-S WINCH WITH SYNTHETIC ROPE
- \* ADDICTIVE DESERT DESIGNS CAPTURE FAIRLEAD
- \* FACTORY LED HEADLIGHTS
- \* RUGGED RIDGE BLACK HEADLIGHT GUARDS
- \* MOPAR 10TH ANNIVERSARY RUBICON POWER DOME HOOD
- \* PAINTED TO MATCH FENDER FLARES
- \* RUBICON EXPRESS 2.5" LIFT KIT WITH TERAFLEX FALCON SERIES 3 SHOCKS & DESERTRIDE

RESERVING

- \* TERAFLEX FALCON STABILIZER KIT
- \* SUSPENSION PARTS (PAINTED RED)
- \* MOPAR AUXILIARY SWITCH BANK KIT
  
- \* 50" LED LIGHT BAR AND 4 RIGID INDUSTRIES DUALY D2 LED PILLAR LIGHTS ( LIGHT BRACKETS PAINTED TO MATCH )
  
- \* AMP RESEARCH POWER RUNNING BOARDS WITH LED LIGHT KIT
- \* RUGGED RIDGE BLACK TAIL LIGHT GUARDS
- \* TERAFLEX ALPHA HD ADJUSTABLE SPARE TIRE ADAPTOR
- \* RUGGED RIDGE LED THIRD BRAKE LIGHT RING
- \* SMITTYBILT XRC REAR BUMPER WITH 2 LED LIGHTS & REAR PARK DISTANCE SENSORS
- \* REAR D-RINGS & ISOLATORS (RED)
- \* MAGNAFLOW BLACK SERIES EXHAUST SYSTEM
- \* ALL WEATHER FLOOR MATS
- \* SUPERCHIPS FLASHCAL PROGRAMMER
- \* 20" FUEL GLOSS BLACK "HOSTAGE" WHEELS
- \* BRAND NEW NITTO RIDGE GRAPPLER 37X13.50R/20 TIRES

**WE BUILD EVERY JEEP WITH PRIDE! DO NOT HESITATE TO CALL US WITH THIS JEEP BUILD. WE CAN MAKE CHANGES TO THIS JEEP BUILD OR CUSTOM BUILD ANY JEEP TO YOUR PREFERENCE. GIVE US A CALL @ 972-242-5350 OR STOP BY FOR A TEST DRIVE. 1724 LUNA RD IN CARROLLTON - 2 MILES NORTH OF 635.**

2020 Jeep Wrangler JL Unlimited Rubicon 4X4 SKY TOP,LIFTED,BUMPERS,LED'S  
 Texas Vehicle Exchange - 972-242-5350 - View this car on our website at [tveauto.com/6735286/ebrochure](http://tveauto.com/6735286/ebrochure)

**Our Location :**



2020 Jeep Wrangler JL Unlimited Rubicon 4X4 SKY TOP,LIFTED,BUMPERS,LED'S  
 Texas Vehicle Exchange - 972-242-5350 - View this car on our website at [tveauto.com/6735286/ebrochure](http://tveauto.com/6735286/ebrochure)

**Installed Options**

**Interior**

- 6-Way Driver Seat -inc: Manual Recline, Height Adjustment, Fore/Aft Movement and Manual Lumbar Support
- Front Seats w/Cloth Back Material and Manual Driver Lumbar
- Full Carpet Floor Covering -inc: Carpet Front And Rear Floor Mats
- Gauges -inc: Speedometer, Odometer, Voltmeter, Oil Pressure, Engine Coolant Temp, Tachometer, Engine Hour Meter, Trip Odometer and Trip Computer
- Power 1st Row Windows w/Driver And Passenger 1-Touch Down
- Power Door Locks w/Autolock Feature
- Power Rear Windows and Removable 3rd Row Windows
- Premium Cloth Low-Back Bucket Seats- Proximity Key For Push Button Start Only
- Remote Keyless Entry w/Integrated Key Transmitter, Illuminated Entry and Panic Button
- Trip Computer- 2 12V DC Power Outlets
- 2 12V DC Power Outlets and 1 AC Power Outlet - 2 Seatback Storage Pockets
- 4-Way Passenger Seat -inc: Manual Recline and Fore/Aft Movement
- 60-40 Folding Split-Bench Front Facing Fold Forward Seatback Premium Cloth Rear Seat
- Air Filtration- Analog Display- Cargo Space Lights
- Carpet Floor Trim, Carpet And Rubber Mat- Compass
- Cruise Control w/Steering Wheel Controls- Day-Night Rearview Mirror
- Delayed Accessory Power
- Driver And Passenger Visor Vanity Mirrors w/Driver And Passenger Illumination
- Fade-To-Off Interior Lighting- Front And Rear Map Lights
- Front Center Armrest w/Storage
- Full Floor Console w/Locking Storage, 2 12V DC Power Outlets and 1 AC Power Outlet
- Garage Door Transmitter- HVAC -inc: Console Ducts- Illuminated Front Cupholder

**Option Packages**

**Factory Installed Packages**

<b>ENGINE: 3.6L V6 24V VVT UPG I W/ESS</b>	
<b>TRANSMISSION: 8-SPEED AUTOMATIC (850RE)</b> -inc: TIP Start, Hill Descent Control	<b>\$2,750</b>
<b>8.4" RADIO &amp; PREMIUM AUDIO GROUP</b> -inc: SiriusXM Traffic Plus, Alpine Premium Audio System, HD Radio, Radio: Uconnect 4C Nav w/8.4" Display, For Details, Visit DriveUconnect.ca, Rear View Auto Dim Mirror, 1-Year SiriusXM Guardian Trial, 5-Year SiriusXM Travel Link Service, GPS Navigation, 5-Year SiriusXM Traffic Service, SiriusXM Travel Link, 4G LTE Wi-Fi Hot Spot, Emergency/Assistance Call, 8.4" Touchscreen Display	<b>\$1,695</b>
<b>BODY COLOR FENDER FLARES</b>	<b>\$495</b>
<b>COLD WEATHER GROUP</b> -inc: Heated Steering Wheel, Heated Front Seats	<b>\$995</b>
<b>LED LIGHTING GROUP</b>	

- Illuminated Rear Cupholder
- Instrument Panel Bin, Dashboard Storage, Driver / Passenger And Rear Door Bins
- Interior Trim -inc: Colored Instrument Panel Insert, Metal-Look Door Panel Insert, Metal-Look Console Insert and Metal-Look Interior Accents
- Leather Steering Wheel- Locking Cargo Area Concealed Storage- Locking Glove Box
- Manual Adjustable Front Head Restraints and Foldable Rear Head Restraints
- Manual Tilt/Telescoping Steering Column- Outside Temp Gauge- Perimeter Alarm
- Redundant Digital Speedometer- Sentry Key Engine Immobilizer
- Smart Device Integration- Systems Monitor- Urethane Gear Shift Knob
- Voice Activated Dual Zone Front Automatic Air Conditioning

## Exterior

- Black Front Bumper w/2 Tow Hooks- Black Rear Bumper w/1 Tow Hook
- Front Fog Lamps
- Fully Automatic Aero-Composite Halogen Daytime Running Headlamps w/Delay-Off
- Manual Convertible Top w/Fixed Roll-Over Protection
- Tailgate/Rear Door Lock Included w/Power Door Locks
- Tires: LT285/70R17C BSW Off-Road- Wheels: 17" x 7.5" Machined w/Black Pockets
- 97 MPH Vehicle Max Speed Calibration- Aluminum Spare Wheel
- BF Goodrich Brand Tires- Black Door Handles
- Black Power Heated Side Mirrors w/Manual Folding- Black Side Windows Trim
- Black Wheel Well Trim and Black Fender Flares- Body-Color Grille w/Colored Accents
- Clearcoat Paint w/Badging- Conventional Rear Cargo Access- Deep Tinted Glass
- Full-Size Spare Tire Mounted Outside Rear
- Galvanized Steel/Aluminum/Magnesium Panels- Non-Lock Fuel Cap w/o Discriminator
- Removable Rear Window- Variable Intermittent Wipers

## Safety

- 6-Way Driver Seat -inc: Manual Recline, Height Adjustment, Fore/Aft Movement and Manual Lumbar Support
- Front Seats w/Cloth Back Material and Manual Driver Lumbar
- Full Carpet Floor Covering -inc: Carpet Front And Rear Floor Mats
- Gauges -inc: Speedometer, Odometer, Voltmeter, Oil Pressure, Engine Coolant Temp, Tachometer, Engine Hour Meter, Trip Odometer and Trip Computer
- Power 1st Row Windows w/Driver And Passenger 1-Touch Down
- Power Door Locks w/Autolock Feature
- Power Rear Windows and Removable 3rd Row Windows
- Premium Cloth Low-Back Bucket Seats- Proximity Key For Push Button Start Only
- Remote Keyless Entry w/Integrated Key Transmitter, Illuminated Entry and Panic Button
- Trip Computer- 2 12V DC Power Outlets
- 2 12V DC Power Outlets and 1 AC Power Outlet - 2 Seatback Storage Pockets
- 4-Way Passenger Seat -inc: Manual Recline and Fore/Aft Movement
- 60-40 Folding Split-Bench Front Facing Fold Forward Seatback Premium Cloth Rear Seat
- Air Filtration- Analog Display- Cargo Space Lights
- Carpet Floor Trim, Carpet And Rubber Mat- Compass
- Cruise Control w/Steering Wheel Controls- Day-Night Rearview Mirror
- Delayed Accessory Power
- Driver And Passenger Visor Vanity Mirrors w/Driver And Passenger Illumination
- Fade-To-Off Interior Lighting- Front And Rear Map Lights
- Front Center Armrest w/Storage
- Full Floor Console w/Locking Storage, 2 12V DC Power Outlets and 1 AC Power Outlet
- Garage Door Transmitter- HVAC -inc: Console Ducts- Illuminated Front Cupholder
- Illuminated Rear Cupholder
- Instrument Panel Bin, Dashboard Storage, Driver / Passenger And Rear Door Bins
- Interior Trim -inc: Colored Instrument Panel Insert, Metal-Look Door Panel Insert, Metal-Look Console Insert and Metal-Look Interior Accents
- Leather Steering Wheel- Locking Cargo Area Concealed Storage- Locking Glove Box
- Manual Adjustable Front Head Restraints and Foldable Rear Head Restraints
- Manual Tilt/Telescoping Steering Column- Outside Temp Gauge- Perimeter Alarm
- Redundant Digital Speedometer- Sentry Key Engine Immobilizer
- Smart Device Integration- Systems Monitor- Urethane Gear Shift Knob
- Voice Activated Dual Zone Front Automatic Air Conditioning

## Mechanical

- 4-Wheel Disc Brakes w/4-Wheel ABS, Front Vented Discs, Brake Assist and Hill Hold Control
- Brake Actuated Limited Slip Differential- Driver Selectable Front Locking Differential
- Driver Selectable Rear Locking Differential- Transmission: 6-Speed Manual
- 21.5 Gal. Fuel Tank- 220 Amp Alternator- 4.10 Rear Axle Ratio- 5 Skid Plates
- 50 State Emissions- 650CCA Maintenance-Free Battery w/Run Down Protection

## LED LIGHTING GROUP

- inc: Daytime Running Lamps LED Accents, Front LED Fog Lamps, LED Reflector Headlamps, LED Taillamps

\$1,045

## REMOTE PROXIMITY KEYLESS ENTRY

\$495

## SAFETY GROUP

- inc: ParkSense Rear Park Assist System, Blind Spot & Cross Path Detection, LED Taillamps

\$995

## SKY 1-TOUCH POWER TOP

- inc: Rear Window Defroster, Rear Window Wiper/Washer, Removable Rear Quarter Windows, Power Top Quarter Window Storage Bag

\$3,995

## QUICK ORDER PACKAGE 24R

- inc: Engine: 3.6L V6 24V VVT UPG I w/ESS, Transmission: 8-Speed Automatic (850RE)

## BRIGHT WHITE CLEARCOAT

## Option Packages Total

\$12,465

- 892# Maximum Payload- Auto Locking Hubs- Aux Battery
  - Electro-Hydraulic Power Assist Steering- Engine Oil Cooler
  - Engine: 3.6L V6 24V VVT UPG I w/ESS
  - Front Active w/Driver Control Anti-Roll Bar and Rear Anti-Roll Bar- GVWR: 5,800 lbs
  - HD Shock Absorbers- Leading Link Front Suspension w/Coil Springs
  - Manual Transfer Case- Part-Time Four-Wheel Drive- Performance Suspension
  - Single Stainless Steel Exhaust- Stop-Start Dual Battery System
  - Towing Equipment -inc: Trailer Sway Control
  - Trailing Arm Rear Suspension w/Coil Springs
- 

Texas Vehicle Exchange

[tveauto.com](https://tveauto.com)

972-242-5350

1724 Luna Road

Carrollton, TX 75006

© 2024 AutoRevo - All rights reserved. - Powered by [AutoRevo](#)