

2017 Chevrolet Silverado 3500HD Work Truck

View this car on our website at workvansandtrucks.com/6730252/ebrochure

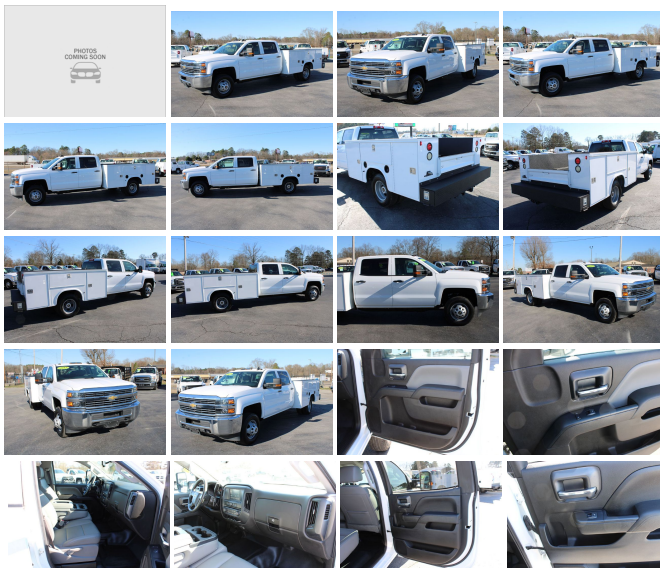


Our Price **\$38,995**

Retail Value ~~\$39,995~~

Specifications:

Year:	2017
VIN:	1GB4CYCG1HF168193
Make:	Chevrolet
Stock:	U2322
Model/Trim:	Silverado 3500HD Work Truck
Condition:	Pre-Owned
Body:	Pickup Truck
Exterior:	WHITE
Engine:	ENGINE, VORTEC 6.0L VARIABLE VALVE TIMING V8 SFI
Interior:	GRAY
Mileage:	44,704
Drivetrain:	Rear Wheel Drive



2017 CHEVROLET 3500 SILVERADO WT CREW CAB 4X2 UTILITY 6.0 GAS ENGINE AUTOMATIC TRANSMISSION, this Dual Wheeled 1 ton service truck comes with Power Windows, Power Door Lock, Power Mirrors, Tow Mirrors, Trailer Brake Controller, Cruise Control, Manual Shift Mode, Tow Haul Mode, Touch screen, am/fm/xm/radio, Traction Control, Vinyl Floor, Vinyl Seats.

Current Oil and Filter Service.

Recondition Knapheide Utility Service Bed comes with 6 locking tool bins, Storage in Bumper, Line-X Bed Liner, the bed was repainted.

Vehicle History Report : as Of 04/20/2024



Snapshot

2017 CHEVROLET SILVERADO 3500HD CC WORK TRUCK



No accidents or damage reported to CARFAX



4 Service history records



At least 1 open recall



3 Previous owners



Types of owners: Corporate fleet,
Personal



103,187 Last reported odometer reading



FREE CARFAX Report

See the full CARFAX Report for additional information

*carfax Snapshot is a reflection of available information on the date the report was pulled. carfax is constantly being updated with new information and is subject to change at any time.

Our Location :



2017 Chevrolet Silverado 3500HD Work Truck

T & B Auto Sales - 501-847-2727 - View this car on our website at workvansandtrucks.com/6730252/ebrochure

Installed Options

Interior

- Seats, front 40/20/40 split-bench 3-passenger, driver and front passenger recline with outboard head restraints and center fold-down armrest with storage. Vinyl has fixed lumbar and cloth has manually adjustable driver lumbar.
- Seat trim, Vinyl
- Windows, power with driver express up and down and express down on all other windows (Standard on Crew Cab.)
- Door locks, power
- Seat, rear 60/40 folding bench (folds up), 3-passenger, (includes child seat top tether anchor) (Requires Crew Cab models.)
- Floor covering, Graphite-colored rubberized-vinyl- Steering column, manual Tilt-Wheel
- Steering wheel
- Instrumentation 6-gauge cluster featuring speedometer, fuel level, engine temperature, tachometer, voltage and oil pressure
- Driver Information Center 3.5-inch diagonal monochromatic display, provides warning messages and basic vehicle information
- Cruise control, steering wheel-mounted- Air conditioning, single-zone
- Assist handle, front passenger and driver on A-pillars

Exterior

Option Packages

Factory Installed Packages

ENGINE, VORTEC 6.0L VARIABLE VALVE TIMING V8 SFI
(360 hp [268.4 kW] @ 5400 rpm, 380 lb-ft of
torque [515.0 N-m] @ 4200 rpm)

- Tires, LT235/80R17E all-season highway- Wheels, 17" (43.2 cm) painted steel
- Wheel trim, painted trim skins and painted center caps- Bumper, front chrome
- Grille, chrome surround- Headlamps, halogen projector-beam
- Lamps, Smoked Amber roof marker
- Lamps, cargo area, cab mounted with switch on center switch bank
- Mirrors, outside high-visibility vertical camper-style, Black with manual folding and extension and lower convex spotter glass
- Glass, solar absorbing, tinted- Door handles, Black

Safety

- Seats, front 40/20/40 split-bench 3-passenger, driver and front passenger recline with outboard head restraints and center fold-down armrest with storage. Vinyl has fixed lumbar and cloth has manually adjustable driver lumbar.
- Seat trim, Vinyl
- Windows, power with driver express up and down and express down on all other windows (Standard on Crew Cab.)
- Door locks, power
- Seat, rear 60/40 folding bench (folds up), 3-passenger, (includes child seat top tether anchor) (Requires Crew Cab models.)
- Floor covering, Graphite-colored rubberized-vinyl- Steering column, manual Tilt-Wheel
- Steering wheel
- Instrumentation 6-gauge cluster featuring speedometer, fuel level, engine temperature, tachometer, voltage and oil pressure
- Driver Information Center 3.5-inch diagonal monochromatic display, provides warning messages and basic vehicle information
- Cruise control, steering wheel-mounted- Air conditioning, single-zone
- Assist handle, front passenger and driver on A-pillars

Mechanical

- Transmission, 6-speed automatic, heavy-duty electronically controlled with overdrive and tow/haul mode. Includes Cruise Grade Braking and Powertrain Grade Braking (Requires (L96) Vortec 6.0L V8 SFI engine.)
- Recovery hooks, front, frame-mounted, black
- Engine, Vortec 6.0L Variable Valve Timing V8 SFI (360 hp [268.4 kW] @ 5400 rpm, 380 lb-ft of torque [515.0 N-m] @ 4200 rpm)
- Rear axle, 4.10 ratio (Requires (L96) Vortec 6.0L V8 SFI engine .)
- Differential, heavy-duty locking rear- Air cleaner, high-capacity- Rear wheel drive
- Cooling, external engine oil cooler- Cooling, auxiliary external transmission oil cooler
- Battery, heavy-duty 720 cold-cranking amps/80 Amp-hr, maintenance-free with rundown protection and retained accessory power
- Alternator, 150 amps- Body, Chassis Cab- Frame, fully-boxed, hydroformed front section
- GVWR, 13,200 lbs. (5988 kg)
- Suspension Package, Standard includes 51mm twin tube shock absorbers and 33mm front stabilizer bar
- Steering, Recirculating Ball with smart flow power steering system
- Fuel tank, front and rear, 63.5 gallon - Capped Fuel Fill
- Exhaust, aluminized stainless-steel muffler and tailpipe
- Back-up alarm calibration This calibration will allow installation of an aftermarket back up alarm.



workvansandtrucks.com

501-847-2727

25637 I-30

Bryant, AR 72022

© 2024 AutoRevo - All rights reserved. - Powered by AutoRevo