



2016 Scion FR-S SPEED Turbo & Carbon Fiber

Website Price \$19,995

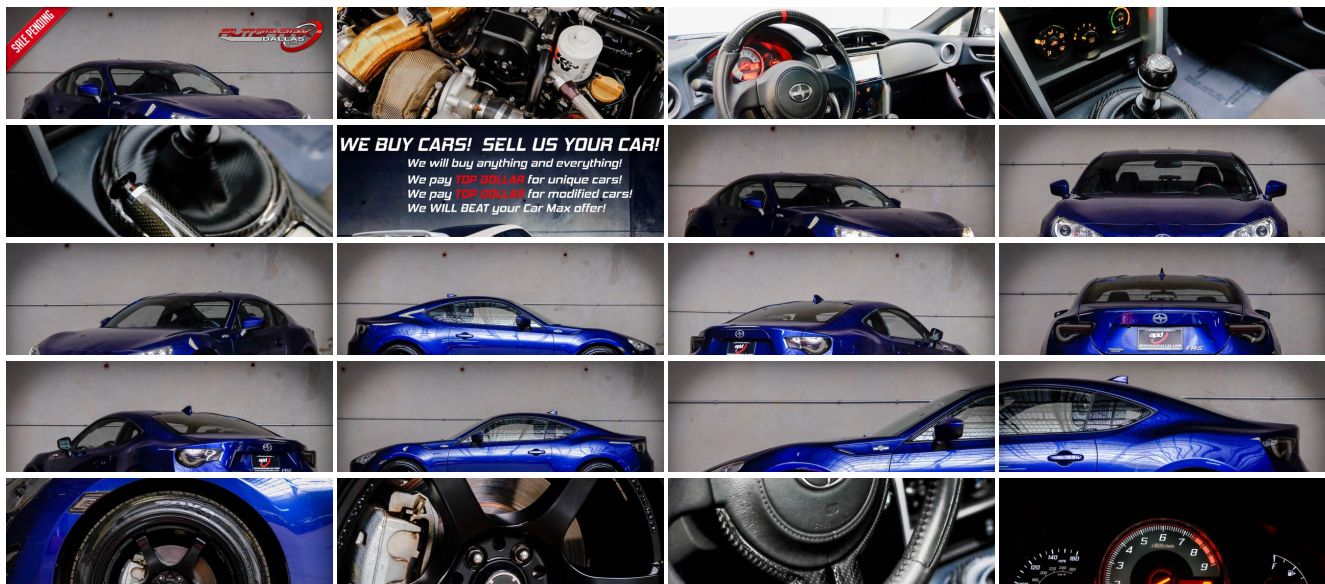
View this vehicle on our website at autoparkdallas.com



(214) 945-2601

2061 S Stemmons Fwy , Lewisville, TX 75067

- Photos
- Details
- Contact



Specifications:

Year:	2016
VIN:	JF1ZNAA10G9707018
Make:	Scion
Model/Trim:	FR-S SPEED Turbo & Carbon Fiber
Condition:	Pre-Owned
Body:	Coupe
Exterior:	Oceanic
Engine:	Engine: 2.0L H-4 DOHC D-4S Injection
Interior:	Black Cloth
Transmission:	Transmission: 6-Speed Manual
Mileage:	26,550
Drivetrain:	Rear Wheel Drive
Economy:	City 22 / Highway 30

Vehicle Description

AutoPark Dallas is excited to offer you this SPEED By Design Turbo Enhanced 2016 Scion FR-S for sale! If you're looking for vigorous performance in an affordable package then look no further than the FR-S by Scion. An amazing sports car with the looks and with ours here having so many modifications that make it stick out above your regular FR-S and smoke the competition of its same class! Not to forget that the FR-S has one of most reliable motors in the game, which is made by Subaru, that is bumped up in horsepower by a SPEED By Design Turbo System! If you're looking for a sick new ride or a fun daily driver then come check out this Scion parked in our indoor 16,000 Sq Ft Showroom located in Addison, Tx. amongst our inventory of 100+ other unique and luxury vehicles!

2016 Scion FR-S

1 OWNER!

Clean CarFax!

2 Set of Keys + Valet Key!

MODIFICATIONS!

17" RAYS (Style: GramLights 57D-R) Wheels

Speed By Design SBD500X Turbo Kit

TurboSmart Raceport 50mm Blow-Off Valve

MISHIMOTO Stainless Steel Braided Hoses

MISHIMOTO Baffled Oil Catch Can

K&N Oil Filter

Modified Exhaust System

aFe Power Open-Air Intake System

Carbon Fiber FR-S Steering Wheel

Carbon Fiber E-Brake

Carbon Fiber Shift Knob

Carbon Fiber Shifter Trim

iJDM LED Side Marker Light

OLM VL Style / Helix Sequential Smoked Lens Black Housing

STOCK!

Oceanic Blue Metallic Exterior
Black Cloth Interior
Hands Free Bluetooth
Navigation w/ Voice Command
Back-Up Camera
VSC 'Sport' Mode
Single-Zone Air Conditioning
Mechanical Limited Slip Differential
Bluetooth Audio Streaming
CD / AUX / USB Capable
Cruise Control
2.0L H-4 DOHC D-4S Injection Engine
6-Speed Manual Transmission
Rear Wheel Drive
Professionally Detailed!
Well Maintained!
AND SO MUCH MORE!!!

Financing is available!

Get pre-approved in no time by filling out a credit application on the finance section of our website!

SELL US YOUR CAR! WE BUY CARS!

****All vehicles are priced for QUICK SALE. All REASONABLE offers will be considered****

AutoPark Dallas is dedicated to offering a level of customer service not usually found in the automobile industry. We take pride in continuing this service long after the vehicle has been delivered. We strive for excellence and make every effort to see that our customer is completely satisfied with every purchase. Referrals and Testimonials is what our business is built on.

Our extensive buying experience guarantees quality, pre-owned and new vehicles hand-picked from factory sources. Our love for the automobile and our dislike of traditional dealership tactics motivate us to provide the service we do!

Pre-purchase inspections are always welcomed! We also offer airport shuttles, amazing finance options, and so much more!

We accept trade-ins, will BUY your car (modified or not) even if you don't buy one from us, and offer consignment deals to SELL your vehicle for you! For more information just give us a CALL or TEXT!!

#214-945-2601

Call or Text **Anytime!**

Se habla Español

WE BUY CARS!

Installed Options

Interior

- 1 Seatback Storage Pocket- 2 12V DC Power Outlets
- 4-Way Passenger Seat -inc: Manual Rear Seat Easy Entry - 6-Way Driver Seat
- Air Filtration- Analog Display- Cargo Area Concealed Storage- Cargo Space Lights
- Carpet Floor Trim- Cruise Control w/Steering Wheel Controls
- Day-Night Rearview Mirror- Delay Off Interior Lighting- Delayed Accessory Power
- Driver And Passenger Visor Vanity Mirrors - Driver Foot Rest- Engine Immobilizer
- Fabric Upholstery- Fixed Rear Windows
- Front Bucket Seats -inc: 6-way driver seat and 4-way front-passenger seat w/integrated headrests
- Front Cupholder- Front Map Lights
- Full Carpet Floor Covering -inc: Carpet Front And Rear Floor Mats - Full Cloth Headliner
- Full Floor Console w/Storage and 2 12V DC Power Outlets
- Full Folding Bench Front Facing Fold Forward Seatback Rear Seat
- Gauges -inc: Speedometer, Odometer, Engine Coolant Temp, Tachometer, Trip Odometer and Trip Computer
- Glove Box- Instrument Panel Bin, Driver And Passenger Door Bins
- Interior Trim -inc: Simulated Carbon Fiber Instrument Panel Insert, Metal-Look Door Panel Insert, Metal-Look Console Insert and Metal-Look Interior Accents
- Leather/Aluminum Gear Shift Knob- Leather/Metal-Look Steering Wheel
- Leatherette Door Trim Insert
- Manual Adjustable Front Head Restraints and Fixed Rear Head Restraints
- Manual Air Conditioning- Manual Tilt/Telescoping Steering Column
- Outside Temp Gauge
- Power 1st Row Windows w/Driver And Passenger 1-Touch Up/Down
- Power Door Locks- Redundant Digital Speedometer
- Remote Keyless Entry w/Integrated Key Transmitter, Illuminated Entry, Illuminated Ignition Switch and Panic Button
- Remote Releases -Inc: Power Cargo Access and Mechanical Fuel
- Seats w/Cloth Back Material- Trip Computer- Valet Function

Exterior

- Tires: P215/45R17 Summer- Black Grille- Black Side Windows Trim
- Body-Colored Door Handles- Body-Colored Front Bumper
- Body-Colored Power Side Mirrors w/Manual Folding
- Body-Colored Rear Bumper w/Black Rub Strip/Fascia Accent- Clearcoat Paint
- Compact Spare Tire Mounted Inside Under Cargo- Fixed Rear Window w/Defroster
- Fully Automatic Projector Beam Halogen Daytime Running Headlamps w/Delay-Off
- Galvanized Steel/Aluminum Panels- LED Brakelights- Light Tinted Glass
- Steel Spare Wheel- Tailgate/Rear Door Lock Included w/Power Door Locks
- Trunk Rear Cargo Access- Variable Intermittent Wipers- Wheels: 17" x 7" Alloy

Safety

- 1 Seatback Storage Pocket- 2 12V DC Power Outlets
- 4-Way Passenger Seat -inc: Manual Rear Seat Easy Entry - 6-Way Driver Seat
- Air Filtration- Analog Display- Cargo Area Concealed Storage- Cargo Space Lights
- Carpet Floor Trim- Cruise Control w/Steering Wheel Controls
- Day-Night Rearview Mirror- Delay Off Interior Lighting- Delayed Accessory Power
- Driver And Passenger Visor Vanity Mirrors - Driver Foot Rest- Engine Immobilizer
- Fabric Upholstery- Fixed Rear Windows
- Front Bucket Seats -inc: 6-way driver seat and 4-way front-passenger seat w/integrated headrests
- Front Cupholder- Front Map Lights
- Full Carpet Floor Covering -inc: Carpet Front And Rear Floor Mats - Full Cloth Headliner
- Full Floor Console w/Storage and 2 12V DC Power Outlets
- Full Folding Bench Front Facing Fold Forward Seatback Rear Seat
- Gauges -inc: Speedometer, Odometer, Engine Coolant Temp, Tachometer, Trip Odometer and Trip Computer
- Glove Box- Instrument Panel Bin, Driver And Passenger Door Bins
- Interior Trim -inc: Simulated Carbon Fiber Instrument Panel Insert, Metal-Look Door Panel Insert, Metal-Look Console Insert and Metal-Look Interior Accents
- Leather/Aluminum Gear Shift Knob- Leather/Metal-Look Steering Wheel
- Leatherette Door Trim Insert

Option Packages

Factory Installed Packages

BESPOKE AUDIO WITH NAVIGATION	\$900
-------------------------------	-------

50 STATE EMISSIONS

STANDARD PAINT

OCEANIC

BLACK, FABRIC UPHOLSTERY

Option Packages Total	\$900
-----------------------	-------

- Manual Adjustable Front Head Restraints and Fixed Rear Head Restraints
- Manual Air Conditioning- Manual Tilt/Telescoping Steering Column
- Outside Temp Gauge
- Power 1st Row Windows w/Driver And Passenger 1-Touch Up/Down
- Power Door Locks- Redundant Digital Speedometer
- Remote Keyless Entry w/Integrated Key Transmitter, Illuminated Entry, Illuminated Ignition Switch and Panic Button
- Remote Releases -Inc: Power Cargo Access and Mechanical Fuel
- Seats w/Cloth Back Material- Trip Computer- Valet Function

Mechanical

- 13.2 Gal. Fuel Tank- 130 Amp Alternator
- 4-Wheel Disc Brakes w/4-Wheel ABS, Front And Rear Vented Discs and Brake Assist
- 4.10 Axle Ratio- 48-Amp/Hr 390CCA Maintenance-Free Battery
- Double Wishbone Rear Suspension w/Coil Springs- Electric Power-Assist Steering
- Engine: 2.0L H-4 DOHC D-4S Injection- Front And Rear Anti-Roll Bars
- Gas-Pressurized Shock Absorbers- Mechanical Limited Slip Differential
- Quasi-Dual Stainless Steel Exhaust w/Chrome Tailpipe Finisher- Rear-Wheel Drive
- Strut Front Suspension w/Coil Springs- Transmission: 6-Speed Manual



Auto Park Dallas

View this car on our website at autoparkdallas.com/6724693

Website: autoparkdallas.com

Phone: (214) 945-2601

Map: [2061 S Stemmons Fwy, Lewisville, TX 75067](#)

