



2020 Chevrolet Blazer LT

Our Price \$37,407

View this vehicle on our website at parksdeals.com

Parks Chevrolet, Inc.

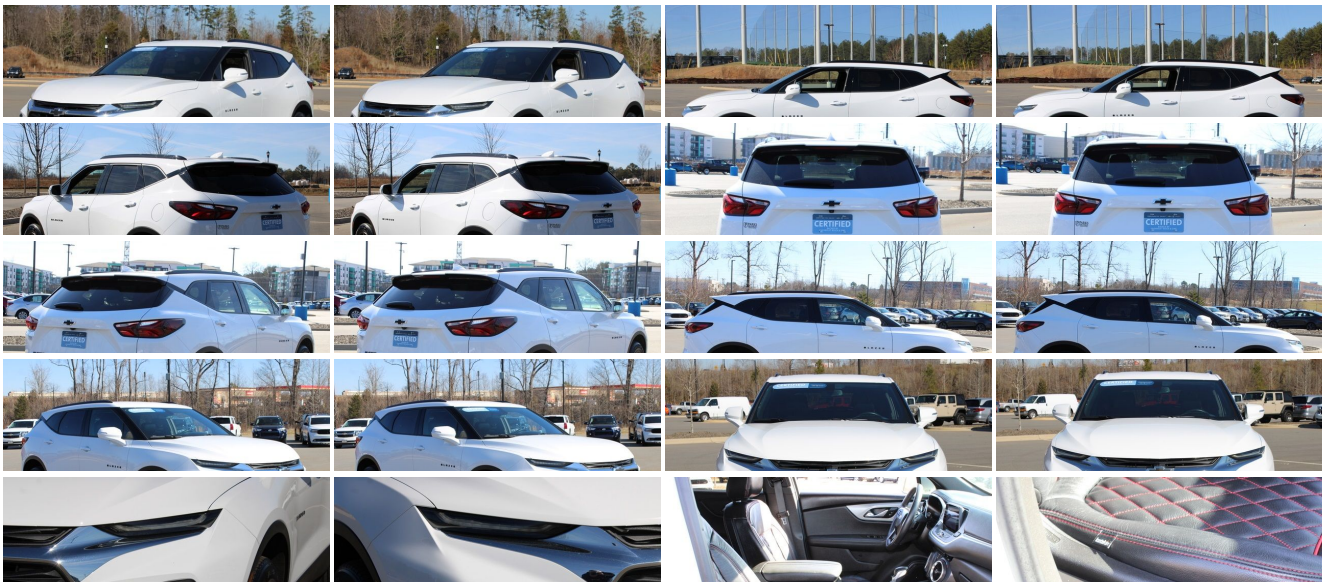
[833-825-2763](tel:833-825-2763)

615 NC-66 South, Kernersville, NC 27284

Photos

Details

Contact



Specifications:

Year:	2020
VIN:	3GNKBBRA7LS590146
Make:	Chevrolet
Stock:	584230A
Model/Trim:	Blazer LT
Condition:	Pre-Owned
Body:	SUV
Exterior:	Summit White
Engine:	ENGINE, 2.5L 4-CYLINDER SIDI, DOHC WITH VARIABLE VALVE TIMING (VVT)
Interior:	Jet Black Cloth
Mileage:	31,374
Drivetrain:	Front Wheel Drive
Economy:	City 21 / Highway 27

Vehicle Description

2020 Chevrolet Blazer LT Certified.

6 Speakers, Apple CarPlay/Android Auto, Black Roof Rails, Convenience & Driver Confidence Package, Front dual zone A/C, Heated Driver & Front Passenger Seats, High-Intensity Discharge Headlights, Inside Rear-View Auto-Dimming Mirror, Lane Change Alert w/Side Blind Zone Alert, Leather Shift Knob, Outside Heated Power-Adjustable Body-Color Mirrors, Preferred Equipment Group 1LT, Premium Cloth Seat Trim, Rear Cross Traffic Alert, Rear Park Assist w/Audible Warning, Rear Power Programmable Liftgate, Remote Start, Universal Home Remote. CARFAX One-Owner. Clean CARFAX.

21/27 City/Highway MPG

Call 704.288.0662 to check on the availability of this vehicle and schedule a private showing or shop 24 hours a day @ WWW.PARKSCHARLOTTE.COM. *All prices are plus tax, tag, title, and documentation. All vehicles are fully reconditioned by a Master ASE Factory Trained Certified Technician.

Awards:

* JD Power Automotive Performance, Execution and Layout (APEAL) Study

Installed Options

Interior

- Seats, front buckets- Seat trim, Premium Cloth
- USB data ports, 2, one type-A and one type-C located within the instrument panel
- Floor mats, carpeted front and rear
- Door locks, power programmable with lockout protection
- Keyless Open and Start includes extended range Remote Keyless Entry
- Seating, 5-passenger- Seat adjuster, driver 8-way power
- Seat adjuster, front passenger 4-way manual
- Head restraints, front, 2-way adjustable, up/down
- Head restraints, rear outboard 2-way adjustable, up/down
- USB charging-only ports 2, one type-A and one type-C, located on rear of center console
- Steering wheel, leather-wrapped 3-spoke- Steering column, manual tilt and telescopic
- Driver Information Center, 4.2" diagonal multi-color- Compass, 8-point digital
- Windows, power with driver Express-Up/Down and front passenger and rear seat passengers Express-Down
- Cruise control, electronic with set and resume speed
- Theft-deterrent system, electrical, unauthorized entry
- Air conditioning, dual-zone automatic climate control with individual climate settings for driver and right-front passenger
- Defogger, rear-window electric- Air filtration system- Air vents, rear console
- Glovebox, lockable electronic
- Cup holders 2 in front center console and 2 in rear center armrest
- Mirror, inside rearview manual day/night
- Visors, driver and front passenger illuminated vanity mirrors covered
- Assist handles, front passenger and rear outboard with coat hooks on rear passenger assist handles
- Lighting, interior with front reading lamps, overhead courtesy lamp, dual rear-quarter panel area dome lamps, True White backlit switches, True White pin spot lighting in the bin forward of the shifter and front footwells, LED glove box lighting and backlit USB ports

Option Packages

Factory Installed Packages

ENGINE, 2.5L 4-CYLINDER SIDI, DOHC WITH VARIABLE VALVE TIMING (VVT)

with Stop/Start (193 hp [144 kW] @ 6300 rpm,
188 lb-ft of torque [255 N-m] @ 4400 rpm)

- Umbrella holders, driver and front passenger doors
- Chevrolet Connected Access capable (Subject to terms. See onstar.com or dealer for details.)

Exterior

- Wheels, 18" (45.7 cm) Bright Silver aluminum- Tires, P235/65R18 all-season blackwall
- Mirrors, outside heated power-adjustable, manual-folding body-color
- Wheel, spare, 18" (45.7 cm) steel- Tire, compact spare, T135/70R18, blackwall
- Active Aero Shutters, upper- Moldings, lower body-side (Molded-in-color Black)
- Antenna, body-color
- Grille, Blazer signature Black horizontal 4-bar with Bright Chrome header bar
- Headlamps, high intensity discharge (HID), bi-functional
- Headlamp control, automatic on and off with automatic delay - Taillamps, LED
- Mirror caps, body-color- Glass, deep-tinted, rear windows and liftgate
- Wipers, front variable-speed, intermittent with washers
- Wiper, rear intermittent with washer- Liftgate, rear manual- Door handles, body-color

Safety

- Seats, front buckets- Seat trim, Premium Cloth
- USB data ports, 2, one type-A and one type-C located within the instrument panel
- Floor mats, carpeted front and rear
- Door locks, power programmable with lockout protection
- Keyless Open and Start includes extended range Remote Keyless Entry
- Seating, 5-passenger- Seat adjuster, driver 8-way power
- Seat adjuster, front passenger 4-way manual
- Head restraints, front, 2-way adjustable, up/down
- Head restraints, rear outboard 2-way adjustable, up/down
- USB charging-only ports 2, one type-A and one type-C, located on rear of center console
- Steering wheel, leather-wrapped 3-spoke- Steering column, manual tilt and telescopic
- Driver Information Center, 4.2" diagonal multi-color- Compass, 8-point digital
- Windows, power with driver Express-Up/Down and front passenger and rear seat passengers Express-Down
- Cruise control, electronic with set and resume speed
- Theft-deterrent system, electrical, unauthorized entry
- Air conditioning, dual-zone automatic climate control with individual climate settings for driver and right-front passenger
- Defogger, rear-window electric- Air filtration system- Air vents, rear console
- Glovebox, lockable electronic
- Cup holders 2 in front center console and 2 in rear center armrest
- Mirror, inside rearview manual day/night
- Visors, driver and front passenger illuminated vanity mirrors covered
- Assist handles, front passenger and rear outboard with coat hooks on rear passenger assist handles
- Lighting, interior with front reading lamps, overhead courtesy lamp, dual rear-quarter panel area dome lamps, True White backlit switches, True White pin spot lighting in the bin forward of the shifter and front footwells, LED glove box lighting and backlit USB ports
- Umbrella holders, driver and front passenger doors
- Chevrolet Connected Access capable (Subject to terms. See onstar.com or dealer for details.)

Mechanical

- Transmission, 9-speed automatic, electronically-controlled with overdrive includes Driver Shift Control
- Engine, 2.5L 4-cylinder SIDI, DOHC with Variable Valve Timing (VVT) with Stop/Start (193 hp [144 kW] @ 6300 rpm, 188 lb-ft of torque [255 N-m] @ 4400 rpm)
- Axle, 3.80 final drive ratio- Engine control, stop/start system override- Front-wheel drive
- Alternator, 150 amps- GVWR, 6001 lbs. (2722 kg)- Suspension, Ride and Handling
- Brakes, 4-wheel antilock, 4-wheel disc- Electronic parking brake
- Tool kit, road emergency- Capless fuel fill- Exhaust, dual-outlet with circular bright tips

Parks Chevrolet, Inc.

Parks Chevrolet, Inc.

View this car on our website at parksdeals.com/6724147

Website: parksdeals.com

Phone: 833-825-2763

Map: [615 NC-66 South, Kernersville, NC 27284](#)

