



2017 Chevrolet Cruze LT

Our Price \$10,611

View this vehicle on our website at gpmotorz.com

GP Motor Company

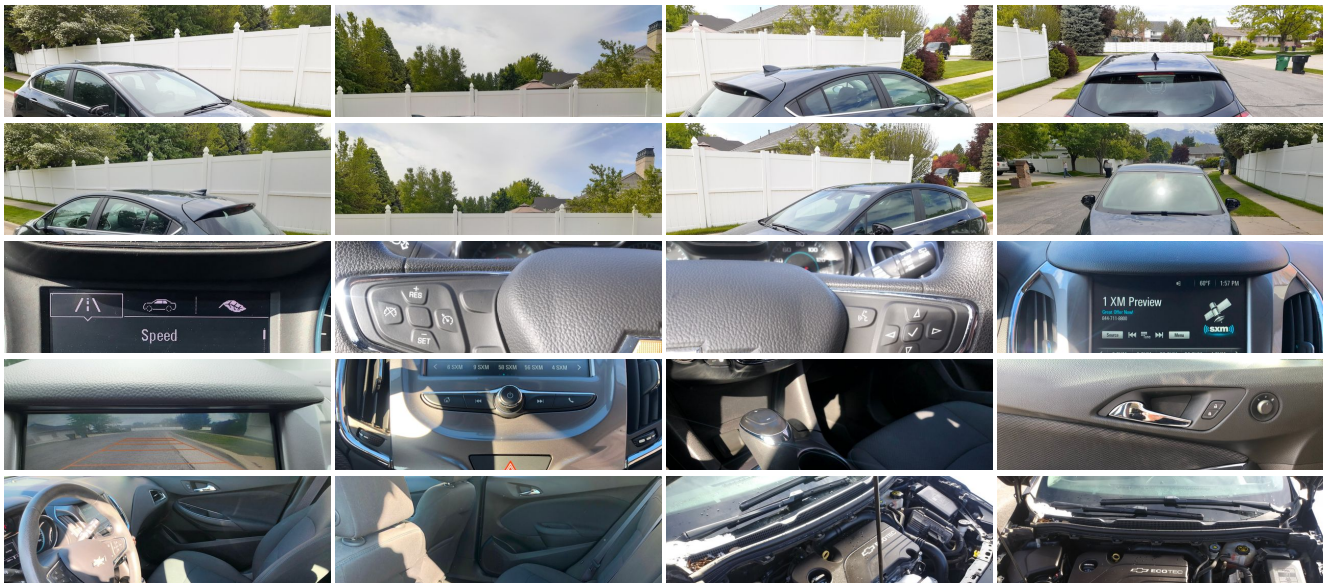
801-305-3019

420 N Kays Dr , Kaysville, UT 84037

Photos

Details

Contact



Specifications:

Year:	2017
VIN:	3G1BE6SM0HS607767
Make:	Chevrolet
Model/Trim:	Cruze LT
Condition:	Pre-Owned
Body:	Sedan
Exterior:	Black
Engine:	ENGINE, 1.4L TURBO DOHC 4-CYLINDER DI
Interior:	Gray Cloth
Mileage:	24,861
Drivetrain:	Front Wheel Drive
Economy:	City 29 / Highway 38

Vehicle Description

Awesome, no accidents, Chevrolet Cruze LT for sale. This car is in great mechanical condition and runs and drives great! The Chevrolet is a super reliable commuter car that gets great gas mileage and looks good while doing it! The Cruze LT comes with a bunch of nice features like the interactive dash display, hands free Bluetooth calling, cruise control, push to start, touch screen radio display, AM/FM radio, back up camera, nice looking heated interior, automatic headlights, power locks, power mirrors and power windows. The car does have some dings on it from a hailstorm it was caught in which is why the title was branded, and I have it priced so well. Give me a call or shoot me a text if you'd like to come check it out. 247A

Installed Options

Interior

- Door locks, power- Floor mats, carpeted front and rear- Remote Keyless Entry
- Remote panic alarm- Seat trim, cloth
- Seat, rear 60/40 split-folding includes center fold-down armrest with 2 cupholders
- Seats, front bucket with reclining seatbacks and adjustable head restraints
- Theft-deterrent system, unauthorized entry- Tire Pressure Display
- Visors, driver and front passenger vanity mirrors
- Air conditioning, single-zone electronic includes air filter
- Armrest, rear center, fold-down with 2 cupholders- Cargo cover
- Console, floor, with armrest- Cruise control- Defogger, rear-window, electric
- Driver Information Center, monochromatic display
- Engine immobilizer, theft-deterrent system- Head restraints, 2-way adjustable, front
- Instrumentation, analog with mph speedometer
- Key, primary foldable, additional foldable (Deleted when (6K5) Convenience Package is ordered.)
- Lighting, interior overhead courtesy lamp and dual reading lamps
- Lighting, interior, roof, rear courtesy- Lighting, interior, trunk/cargo area
- Map pockets, driver and front passenger seatbacks
- Mirror, inside rearview manual day/night- Oil life monitoring system
- Rear air ducts, floor mounted- Seat adjuster, driver 6-way manual
- Seat adjuster, front passenger 2-way manual- Sensor, cabin humidity
- Steering column, manual tilt and telescopic
- Steering wheel controls, mounted audio and phone interface controls
- Steering wheel, 3-spoke, deluxe- Warning tones, driver and front passenger safety belts
- Windows, power with driver and front passenger Express-Down

Exterior

- Spoiler, rear (Replaced with (T43) rear spoiler when (ZLH) RS Package is ordered.)
- Tires, 205/55R16 all-season, blackwall- Wheels, 16" (40.6 cm) aluminum
- Daytime Running Lamps, separate cavity, LED- Door handles, body-color
- Glass, solar absorbing
- Headlamps, halogen dual projector with LED signature lighting with automatic on/off and delay
- Mirrors, outside heated power-adjustable, manual-folding
- Moldings, bright beltline (Not included when ordering (WBL) Redline Edition.)
- Tire, T115/70R16, blackwall, compact spare- Wheel, spare, 16" (40.6 cm) steel
- Windshield, solar absorbing- Wiper, rear intermittent with washer

Option Packages

Factory Installed Packages

ENGINE, 1.4L TURBO DOHC 4-CYLINDER DI
with Continuous Variable Valve Timing (CVT)
(153 hp [114.08 kW] @ 5600 rpm, 177 lb-ft of
torque [239 N-m] @ 2000-4000 rpm)

- Wipers, front intermittent, variable

Safety

- Door locks, power- Floor mats, carpeted front and rear- Remote Keyless Entry
- Remote panic alarm- Seat trim, cloth
- Seat, rear 60/40 split-folding includes center fold-down armrest with 2 cupholders
- Seats, front bucket with reclining seatbacks and adjustable head restraints
- Theft-deterrent system, unauthorized entry- Tire Pressure Display
- Visors, driver and front passenger vanity mirrors
- Air conditioning, single-zone electronic includes air filter
- Armrest, rear center, fold-down with 2 cupholders- Cargo cover
- Console, floor, with armrest- Cruise control- Defogger, rear-window, electric
- Driver Information Center, monochromatic display
- Engine immobilizer, theft-deterrent system- Head restraints, 2-way adjustable, front
- Instrumentation, analog with mph speedometer
- Key, primary foldable, additional foldable (Deleted when (6K5) Convenience Package is ordered.)
- Lighting, interior overhead courtesy lamp and dual reading lamps
- Lighting, interior, roof, rear courtesy- Lighting, interior, trunk/cargo area
- Map pockets, driver and front passenger seatbacks
- Mirror, inside rearview manual day/night- Oil life monitoring system
- Rear air ducts, floor mounted- Seat adjuster, driver 6-way manual
- Seat adjuster, front passenger 2-way manual- Sensor, cabin humidity
- Steering column, manual tilt and telescopic
- Steering wheel controls, mounted audio and phone interface controls
- Steering wheel, 3-spoke, deluxe- Warning tones, driver and front passenger safety belts
- Windows, power with driver and front passenger Express-Down

Mechanical

- Transmission, 6-speed automatic- Alternator, 130 amps- Axle, 3.14 ratio
- Battery, 80AH- Brake lining, high-performance, noise and dust performance
- Brake, parking, manual, foot apply- Brakes, 4-wheel disc, 4-wheel antilock, Duralife
- Coolant protection, engine- Engine control, stop-start system
- Engine, 1.4L turbo DOHC 4-cylinder DI with Continuous Variable Valve Timing (CVVT) (153 hp [114.08 kW] @ 5600 rpm, 177 lb-ft of torque [239 N-m] @ 2000-4000 rpm)
- Front wheel drive- Steering, power, electric rack-mounted, reduced travel
- Suspension, front MacPherson strut- Suspension, rear, compound crank

GP Motor Company

GP Motor Company

View this car on our website at gpmotorz.com/6722562

Website: gpmotorz.com

Phone: [801-305-3019](tel:801-305-3019)

Map: [420 N Kays Dr , Kaysville, UT 84037](#)

