



## 2010 FORD F-150 LARIAT NAVIGATION BACK-UP CAMERA SERVICE RECORDS

Contact Sales 310-987-1212

**Our Price \$13,990**

**Retail Value \$19,820**

View this vehicle on our website at [boutiqueautosales.com](http://boutiqueautosales.com)

Boutique Auto Sales

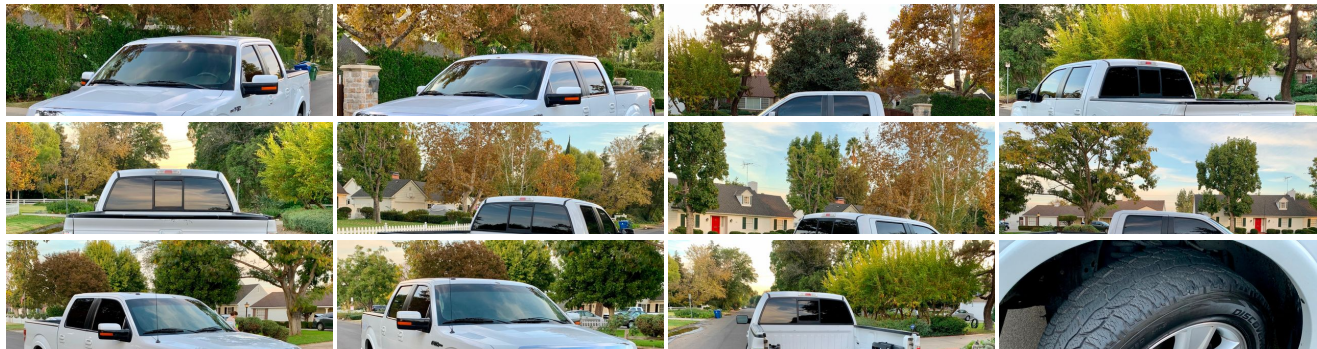
[310-987-1212](tel:310-987-1212)

5950 Laurel Canyon Blvd, North Hollywood, CA 91607

[Photos](#)

[Details](#)

[Contact](#)





Specifications:

Year:	2010
VIN:	1FTFW1CV5AFD80232
Make:	FORD
Stock:	0232
Model/Trim:	F-150 LARIAT NAVIGATION BACK-UP CAMERA SERVICE RECORDS
Condition:	Pre-Owned
Body:	Pickup Truck
Exterior:	White Platinum Metallic Tri-Coat
Engine:	5.4L 3V EFI V8 FFV ENGINE
Interior:	Medium Stone Leather
Transmission:	6-SPEED ELECTRONIC AUTOMATIC TRANSMISSION W/OD, TOW & HAUL MODE
Mileage:	114,420
Drivetrain:	Rear Wheel Drive
Economy:	City 14 / Highway 20

Vehicle Description

Installed Options	Option Packages
<p><b>Interior</b></p> <ul style="list-style-type: none"><li>- (4) cupholders in flow through console- 2nd row B-pillar grab handles- Ambient lighting</li><li>- Auto-dimming rearview mirror- Chrome ring w/obsidian vanes air conditioning registers</li><li>- Color-coordinated carpet -inc: carpeted front &amp; rear floor mats - Cruise control</li><li>- Customer info display- Delayed accessory pwr</li><li>- Driver &amp; front passenger door scuff plates</li><li>- Driver &amp; front passenger illuminated covered visor vanity mirrors</li><li>- Driver side Securicode keypad entry</li><li>- Dual zone electronic automatic temp control (DEATC) air conditioning</li><li>- Fade-to-off interior lighting</li><li>- Front flow-through console w/unique leather lid &amp; leather shift knob</li><li>- Front passenger side A-pillar grab handle- Front pwr point- Front/rear map lights</li><li>- Gauges -inc: fuel gauge, voltmeter, oil pressure, engine coolant temp, speedometer, tachometer, odometer</li><li>- Heated 60/40 flip-up rear split bench seat -inc: folding armrest, cupholders, elongated seat cushion</li><li>- Instrument panel mounted cigar lighter</li><li>- Message center &amp; trip computer -inc: display center features plus distance to empty, avg. fuel economy, multiple language display choices &amp; temp readout options</li><li>- Outside temp gauge- Overhead console w/(2) storage bins</li><li>- Pwr adjustable pedals w/memory- Pwr door locks w/autolock feature</li><li>- Pwr tilt steering column- Pwr windows w/driver side 1-touch down</li><li>- Rear door cupholders- Rear pwr point- Rear window defroster</li><li>- Remote keyless entry w/(2) fobs, illuminated entry &amp; panic button</li><li>- SecuriLock anti-theft ignition (PATS)</li><li>- Unique aluminum applique on center panel &amp; console</li><li>- Unique bright inserts in scuff plates- Unique instrument cluster face</li><li>- Unique leather captains chairs w/heated &amp; cooled 10-way pwr driver &amp; front passenger seats w/adjustable lumbar, driver seat memory</li><li>- Unique leather-wrapped steering wheel w/wood accents, audio controls &amp; memory</li><li>- Unique woodgrain interior trim accents- Universal garage door opener</li></ul>	<p><b>Factory Installed Packages</b></p> <hr/> <p>5.4L 3V EFI V8 FFV ENGINE</p> <hr/> <p>6-SPEED ELECTRONIC AUTOMATIC TRANSMISSION W/OD, TOW &amp; HAUL MODE</p> <hr/> <p>ALL WEATHER RUBBER FLOOR MATS</p> <p>\$95</p> <hr/> <p>DAYTIME RUNNING LIGHTS</p> <p>\$45</p> <hr/> <p>FRONT LICENSE PLATE BRACKET</p> <hr/> <p>LARIAT PREMIUM PKG DISCOUNT</p> <p>-\$1,000</p> <hr/> <p>NAVIGATION SYSTEM W/IN-DASH SCREEN</p> <p>-inc: AM/FM stereo w/Sony CD/DVD/MP3 player, internal hard disk drive, subwoofer, speed compensated volume control, steering wheel mounted audio &amp; navigation controls, auto-dimming rearview mirror</p> <p>\$2,430</p> <hr/> <p>PLASTIC DROP-IN BED LINER</p> <p>\$200</p> <hr/> <p>PWR MOONROOF W/1-TOUCH OPEN &amp; CLOSE</p> <p>inc: overhead console w/single storage bin</p> <p>\$605</p>

Exterior

- (4) full-size doors- 20" polished machined aluminum wheels
- Autolamp -inc: automatic on/off headlamps - Black front/rear stone cuffs
- Body-color door & tailgate handles w/chrome strap- Body-color rear step bumper
- Body-color wheel lip moldings- Bright bodyside accent moldings
- Cargo lamp integrated w/high mount stop light- F-150 Platinum fender badge
- Fog lamps- High gloss black B-pillar applique- Outer scuff pad
- P255/70HR18 all-season BSW spare tire
- P275/55R20 all-season OWL tires -inc: P255/70RH18 all-season BSW spare tire
- Painted body-color front bumper w/black lower valance & body-color upper fascia
- Pwr deployable running boards
- Pwr folding heated side mirrors w/turn signals/memory/drivers auto-dimming function/chrome skull caps
- Pwr sliding rear window -inc: defroster- Rain sensing windshield wipers
- Rear privacy tint glass- Removable tailgate w/key lock & lift assist
- Satin finish grille surround w/chrome mesh insert - Satin finish tailgate applique

Safety

- (4) cupholders in flow through console- 2nd row B-pillar grab handles- Ambient lighting
- Auto-dimming rearview mirror- Chrome ring w/obsidian vanes air conditioning registers
- Color-coordinated carpet -inc: carpeted front & rear floor mats - Cruise control
- Customer info display- Delayed accessory pwr
- Driver & front passenger door scuff plates
- Driver & front passenger illuminated covered visor vanity mirrors
- Driver side Securicode keypad entry
- Dual zone electronic automatic temp control (DEATC) air conditioning
- Fade-to-off interior lighting
- Front flow-through console w/unique leather lid & leather shift knob
- Front passenger side A-pillar grab handle- Front pwr point- Front/rear map lights
- Gauges -inc: fuel gauge, voltmeter, oil pressure, engine coolant temp, speedometer, tachometer, odometer
- Heated 60/40 flip-up rear split bench seat -inc: folding armrest, cupholders, elongated seat cushion
- Instrument panel mounted cigar lighter
- Message center & trip computer -inc: display center features plus distance to empty, avg. fuel economy, multiple language display choices & temp readout options
- Outside temp gauge- Overhead console w/(2) storage bins
- Pwr adjustable pedals w/memory- Pwr door locks w/autolock feature
- Pwr tilt steering column- Pwr windows w/driver side 1-touch down
- Rear door cupholders- Rear pwr point- Rear window defroster
- Remote keyless entry w/(2) fobs, illuminated entry & panic button
- SecuriLock anti-theft ignition (PATS)
- Unique aluminum applique on center panel & console
- Unique bright inserts in scuff plates- Unique instrument cluster face
- Unique leather captains chairs w/heated & cooled 10-way pwr driver & front passenger seats w/adjustable lumbar, driver seat memory
- Unique leather-wrapped steering wheel w/wood accents, audio controls & memory
- Unique woodgrain interior trim accents- Universal garage door opener

Mechanical

- Trailer tow pkg -inc: class IV trailer hitch receiver, 7-pin wiring harness, upgraded radiator, aux trans oil cooler \*Required for towing over 5000#
- (4) pickup box tie-down hooks- 155-amp alternator- 2-ton jack
- 5.4L 3V EFI V8 FFV engine - 5.5' pickup box
- 6-speed electronic automatic transmission w/OD, tow & haul mode
- 7100# GVWR, 1780# maximum payload- 72-amp/hr (650CCA) maintenance-free battery
- Chrome exhaust tip- Easy Fuel capless fuel filler system- Gas shock absorbers
- Leaf spring rear suspension w/2-stage variable rear springs
- Long-spindle double wishbone front suspension w/coil-over-shock IFS
- Pwr front & rear disc brakes- Pwr rack & pinion steering- Rear wheel drive
- Trailer sway control

-inc: over head console w/single storage bin \$995

TAILGATE STEP

\$375

50-STATE EMISSIONS SYSTEM

WHITE PLATINUM METALLIC TRI-COAT

\$495

Option Packages Total

\$3,635

Boutique Auto Sales

Boutique Auto Sales

View this car on our website at [boutiqueautosales.com/6720892](http://boutiqueautosales.com/6720892)

Website: [boutiqueautosales.com](http://boutiqueautosales.com)

Phone: [310-987-1212](tel:310-987-1212)

Map: [5950 Laurel Canyon Blvd, North Hollywood, CA 91607](#)

