



2014 BMW 320i xDrive

Our Price \$11,971

View this vehicle on our website at gpmotorz.com

GP Motor Company

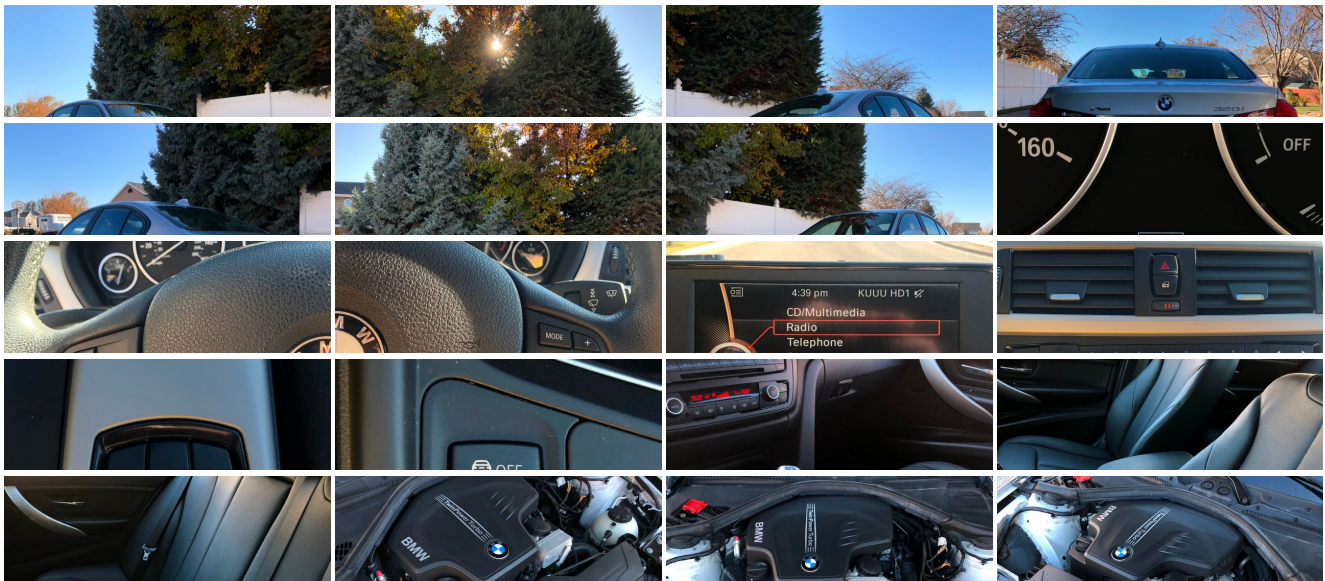
801-305-3019

420 N Kays Dr , Kaysville, UT 84037

Photos

Details

Contact



Specifications:

Year:	2014
VIN:	WBA3C3C59EF983789
Make:	BMW
Model/Trim:	320i xDrive
Condition:	Pre-Owned
Body:	Sedan
Exterior:	Silver
Engine:	Engine: 2.0L TwinPower Turbo 4-Cylinder 16V DOHC
Interior:	Black
Mileage:	60,777
Drivetrain:	All Wheel Drive
Economy:	City 23 / Highway 35

Vehicle Description

Great looking, clean title BMW 3 series 320i xDrive for sale. This car is in great mechanical condition and runs and drives like new! The BMW 3 series 320i is an awesome looking car with great fuel economy without sacrificing luxury. The 3 series 320i comes with many cool features such as cruise control, hands free Bluetooth calling, automatic windshield wipers, nice looking radio display, heated leather interior, eco and sport mode, AM/FM radio, dual climate control, power locks, power mirrors and power windows. The car does have some dings from a hailstorm it was caught in which is why I have it priced so well. Give me a call or shoot me a text if you'd like to come check it out. 247A

Installed Options

Interior

- Dual Zone Front Automatic Air Conditioning
- FOB Controls -inc: Trunk/Hatch/Tailgate and Windows- Front Bucket Seats
- Gauges -inc: Speedometer, Odometer, Tachometer, Oil Temperature, Trip Odometer and Trip Computer
- Power 1st Row Windows w/Front And Rear 1-Touch Up/Down
- Power Door Locks w/Autolock Feature- Power Rear Windows
- Proximity Key For Push Button Start Only - Rear HVAC w/Separate Controls
- Remote Keyless Entry w/Integrated Key Transmitter, 4 Door Curb/Courtesy and Illuminated Entry
- SensaTec Leatherette Upholstery- Trip Computer- 3 12V DC Power Outlets
- 6-Way Driver Seat -inc: Manual Recline, Height Adjustment and Fore/Aft Movement
- 6-Way Passenger Seat -inc: Manual Recline, Height Adjustment and Fore/Aft Movement
- Air Filtration- Analog Display- Bench Front Facing Rear Seat
- Cargo Area Concealed Storage- Cargo Space Lights
- Carpet Floor Trim and Carpet Trunk Lid/Rear Cargo Door Trim
- Cruise Control w/Steering Wheel Controls- Day-Night Rearview Mirror
- Delayed Accessory Power- Driver / Passenger And Rear Door Bins
- Driver And Passenger Visor Vanity Mirrors w/Driver And Passenger Illumination
- Driver Foot Rest- Engine Immobilizer- Fade-To-Off Interior Lighting
- Front And Rear Map Lights- Front Cupholder
- Full Carpet Floor Covering -inc: Carpet Front And Rear Floor Mats - Full Cloth Headliner
- Full Floor Console w/Covered Storage and 3 12V DC Power Outlets
- HVAC -inc: Underseat Ducts, Residual Heat Recirculation and Console Ducts
- Hands-Free Bluetooth & USB Audio Connection- Illuminated Locking Glove Box
- Interior Lock Disable
- Interior Trim -inc: Metal-Look Instrument Panel Insert, Metal-Look Door Panel Insert, Metal-Look Console Insert and Metal-Look Interior Accents
- Leather Steering Wheel- Leather/Metal-Look Gear Shift Knob
- Leatherette Door Trim Insert
- Manual Anti-Whiplash w/Tilt Front Head Restraints and Manual Adjustable Rear Head Restraints
- Manual Tilt/Telescoping Steering Column- Outside Temp Gauge
- Power Fuel Flap Locking Type- Rear Cupholder
- Remote Releases -inc: Power Cargo Access
- Sliding Front Center Armrest and Rear Center Armrest- Systems Monitor
- Tracker System- Valet Function

Exterior

- Fully Automatic Aero-Composite Halogen Daytime Running Headlamps w/Delay-Off
- Tailgate/Rear Door Lock Included w/Power Door Locks - Tires: P225/50R17 AS Run-Flat
- Wheels: 17 x 7.5 Lt Alloy Star-Spoke (Style 393)
- Black Side Windows Trim and Black Front Windshield Trim
- Body-Colored Door Handles- Body-Colored Front Bumper
- Body-Colored Power Heated Side Mirrors w/Manual Folding and Turn Signal Indicator
- Body-Colored Rear Bumper- Chrome Grille- Clearcoat Paint
- Fixed Rear Window w/Defroster- Front Fog Lamps- Fully Galvanized Steel Panels
- Light Tinted Glass- Perimeter/Approach Lights
- Speed Sensitive Rain Detecting Variable Intermittent Wipers w/Heated Jets
- Trunk Rear Cargo Access- Wheels w/Silver Accents

Safety

- Dual Zone Front Automatic Air Conditioning
- FOB Controls -inc: Trunk/Hatch/Tailgate and Windows- Front Bucket Seats
- Gauges -inc: Speedometer, Odometer, Tachometer, Oil Temperature, Trip Odometer and Trip Computer
- Power 1st Row Windows w/Front And Rear 1-Touch Up/Down
- Power Door Locks w/Autolock Feature- Power Rear Windows
- Proximity Key For Push Button Start Only - Rear HVAC w/Separate Controls
- Remote Keyless Entry w/Integrated Key Transmitter, 4 Door Curb/Courtesy and Illuminated Entry
- SensaTec Leatherette Upholstery- Trip Computer- 3 12V DC Power Outlets
- 6-Way Driver Seat -inc: Manual Recline, Height Adjustment and Fore/Aft Movement
- 6-Way Passenger Seat -inc: Manual Recline, Height Adjustment and Fore/Aft Movement
- Air Filtration- Analog Display- Bench Front Facing Rear Seat
- Cargo Area Concealed Storage- Cargo Space Lights
- Carpet Floor Trim and Carpet Trunk Lid/Rear Cargo Door Trim
- Cruise Control w/Steering Wheel Controls- Day-Night Rearview Mirror
- Delayed Accessory Power- Driver / Passenger And Rear Door Bins
- Driver And Passenger Visor Vanity Mirrors w/Driver And Passenger Illumination
- Driver Foot Rest- Engine Immobilizer- Fade-To-Off Interior Lighting
- Front And Rear Map Lights- Front Cupholder
- Full Carpet Floor Covering -inc: Carpet Front And Rear Floor Mats - Full Cloth Headliner
- Full Floor Console w/Covered Storage and 3 12V DC Power Outlets
- HVAC -inc: Underseat Ducts, Residual Heat Recirculation and Console Ducts
- Hands-Free Bluetooth & USB Audio Connection- Illuminated Locking Glove Box
- Interior Lock Disable
- Interior Trim -inc: Metal-Look Instrument Panel Insert, Metal-Look Door Panel Insert, Metal-Look Console Insert and Metal-Look Interior Accents
- Leather Steering Wheel- Leather/Metal-Look Gear Shift Knob
- Leatherette Door Trim Insert
- Manual Anti-Whiplash w/Tilt Front Head Restraints and Manual Adjustable Rear Head Restraints
- Manual Tilt/Telescoping Steering Column- Outside Temp Gauge
- Power Fuel Flap Locking Type- Rear Cupholder
- Remote Releases -inc: Power Cargo Access
- Sliding Front Center Armrest and Rear Center Armrest - Systems Monitor
- Tracker System- Valet Function

Mechanical

- 15.8 Gal. Fuel Tank- 3.38 Axle Ratio
- 4-Wheel Disc Brakes w/4-Wheel ABS, Front And Rear Vented Discs, Brake Assist and Hill Hold Control
- 90-Amp/Hr 900CCA Maintenance-Free Battery
- Electric Power-Assist Speed-Sensing Steering- Engine Auto Stop-Start Feature
- Engine: 2.0L TwinPower Turbo 4-Cylinder 16V DOHC- Front And Rear Anti-Roll Bars
- Full-Time All-Wheel Drive- Gas-Pressurized Shock Absorbers
- Multi-Link Rear Suspension w/Coil Springs- Regenerative 170 Amp Alternator
- Single Stainless Steel Exhaust w/Chrome Tailpipe Finisher
- Strut Front Suspension w/Coil Springs- Transmission w/Driver Selectable Mode
- Transmission: 8-Speed Automatic w/STEPTRONIC

GP Motor Company

GP Motor Company

View this car on our website at gpmotorz.com/6718112

Website: gpmotorz.com

Phone: 801-305-3019

Map: 420 N Kays Dr , Kaysville, UT 84037

