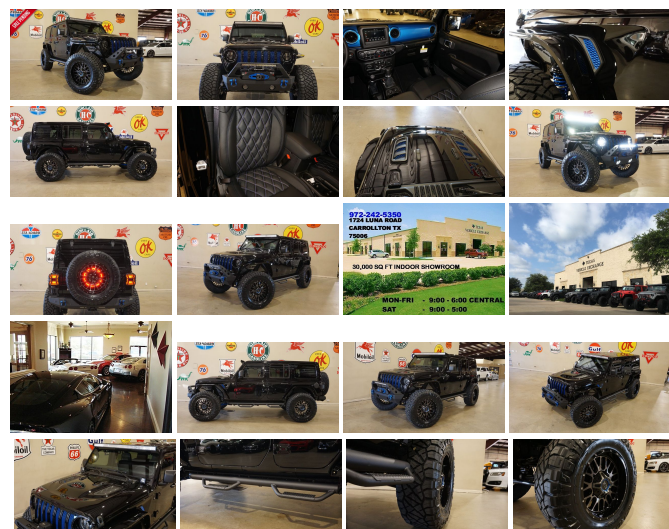


tveauto.com
972-242-5350
1724 Luna Road
Carrollton, TX
75006

Texas Vehicle
Exchange

2020 Jeep Wrangler Unlimited Sport Altitude 4X4 LIFTED,BUMPERS,LED'S

View this car on our website at tveauto.com/6716039/ebrochure



Our Price **\$64,900**

Specifications:

| | |
|---------------|---|
| Year: | 2020 |
| VIN: | 1C4HJXDG6LW102243 |
| Make: | Jeep |
| Stock: | 102243 |
| Model/Trim: | Wrangler Unlimited Sport Altitude 4X4 LIFTED,BUMPERS,LED'S |
| Condition: | Pre-Owned |
| Body: | SUV |
| Exterior: | Black Clearcoat |
| Engine: | ENGINE: 3.6L V6 24V VVT UPG I W/ESS |
| Interior: | Black Leather |
| Transmission: | TRANSMISSION: 8-SPEED AUTOMATIC (850RE) |
| Mileage: | 61 |
| Drivetrain: | 4 Wheel Drive |
| Economy: | City 17 / Highway 22 |

NATION WIDE FINANCING

SUBMIT CREDIT APP WWW.TVEAUTO.COM

OR CALL 972-242-5350

"BLACK CLEAR COAT EDITION"

CUSTOM BUILT 2020 JEEP WRANGLER JL
UNLIMITED SPORT ALTITUDE 4X4 WITH 24L
PACKAGE

UPGRADES INCLUDE:

- * BLACK CLEAR COAT WITH BLUE ACCENTS
- * PAINTED TO MATCH 3 PIECE HARD TOP
- * CUSTOM ALEA BLACK LEATHER WITH BLUE STITCHING
- * HEATED FRONT SEATS
- * FACTORY REMOTE START
- * CONVENIENCE GROUP
- * FACTORY 7.0 INCH TOUCH SCREEN WITH AM/FM/SIRIUS STEREO & ALPINE PREMIUM AUDIO SYSTEM
- * FACTORY BACK-UP CAMERA
- * U-CONNECT
- * DV8 OFF ROAD FS-25 STUBBY FRONT BUMPER WITH LED LIGHT BAR & LED FOGLIGHTS
- * FRONT D-RINGS & ISOLATORS (BLUE)
- * SMITTYBILT NEW GEN II "X20" 10,000 LB WATERPROOF AND WIRELESS CONTROL WINCH WITH SYNTHETIC ROPE
- * FACTORY 55 PROLINK (BLACK)
- * FACTORY MESH GRILLE PAINTED BLUE
- * EVOLUTION 2 LED HEADLIGHTS
- * RUGGED RIDGE BLACK HEADLIGHT GUARDS
- * MOPAR 10TH ANNIVERSARY RUBICON POWER DOME HOOD
- * DV8 OFF ROAD JL SLIM STEEL FENDER FLARES (PAINTED TO MATCH)
- * DV8 OFF ROAD FRONT & REAR INNER FENDERS
- * RUBICON EXPRESS 2.5" LIFT KIT WITH TERAFLX FALCON SHOCKS
- * TERAFLX FALCON STABILIZER KIT
- * SUSPENSION PARTS (PAINTED BLUE)

SUSPENSION PARTS (PAINTED BLUE)

- * MOPAR AUXILIARY SWITCH BANK KIT
- * 50" LED LIGHT BAR AND 2 RIGID INDUSTRIES DUALY D2 LED PILLAR LIGHTS (LIGHT BRACKETS PAINTED TO MATCH)
- * SMITTYBILT BLACK TUBULAR STEPS
- * MOPAR BLACK FUEL DOOR
- * EVOLUTION 2 BLACK LED TAIL LIGHTS
- * RUGGED RIDGE BLACK TAIL LIGHT GUARDS
- * TERAFLX ALPHA HD ADJUSTABLE SPARE TIRE ADAPTOR
- * RUGGED RIDGE LED THIRD BRAKE LIGHT RING
- * DV8 OFF ROAD REAR BUMPER
- * REAR D-RINGS & ISOLATORS (BLUE)
- * ALL WEATHER FLOOR MATS
- * SUPERCHIPS FLASHCAL PROGRAMMER
- * 20" KMC "XD842 SNARE" WHEELS
- * BRAND NEW NITTO RIDGE GRAPPLER 37X13.50R/20 TIRES

WE BUILD EVERY JEEP WITH PRIDE! DO NOT HESITATE TO CALL US WITH THIS JEEP BUILD. WE CAN MAKE CHANGES TO THIS JEEP BUILD OR CUSTOM BUILD ANY JEEP TO YOUR PREFERENCE. GIVE US A CALL @ 972-242-5350 OR STOP BY FOR A TEST DRIVE. 1724 LUNA RD IN CARROLLTON - 2 MILES NORTH OF 635.

Our Location :



2020 Jeep Wrangler Unlimited Sport Altitude 4X4 LIFTED,BUMPERS,LED'S
Texas Vehicle Exchange - 972-242-5350 - View this car on our website at tveauto.com/6716039/ebrochure

Installed Options

Interior

- 6-Way Driver Seat -inc: Manual Recline, Height Adjustment, Fore/Aft Movement and Manual Lumbar Support
- Cloth Low-Back Bucket Seats
- Front Seats w/Cloth Back Material and Manual Driver Lumbar
- Full Carpet Floor Covering -inc: Carpet Front And Rear Floor Mats
- Gauges -inc: Speedometer, Odometer, Engine Coolant Temp, Tachometer, Engine Hour Meter, Trip Odometer and Trip Computer
- Manual Air Conditioning- Trip Computer- 2 12V DC Power Outlets
- 2 Seatback Storage Pockets
- 4-Way Passenger Seat -inc: Manual Recline and Fore/Aft Movement
- 60-40 Folding Split-Bench Front Facing Fold Forward Seatback Cloth Rear Seat
- Analog Display- Cargo Space Lights- Carpet Floor Trim, Carpet And Rubber Mat
- Compass- Cruise Control w/Steering Wheel Controls- Day-Night Rearview Mirror
- Delayed Accessory Power- Fade-To-Off Interior Lighting- Front And Rear Map Lights
- Front Center Armrest w/Storage
- Full Floor Console w/Locking Storage and 2 12V DC Power Outlets
- HVAC -inc: Console Ducts- Illuminated Front Cupholder- Illuminated Rear Cupholder
- Instrument Panel Bin, Dashboard Storage, Driver / Passenger And Rear Door Bins
- Locking Cargo Area Concealed Storage- Locking Glove Box- MOPAR Hardtop Headliner
- Manual Adjustable Front Head Restraints and Foldable Rear Head Restraints
- Manual Tilt/Telescoping Steering Column- Outside Temp Gauge
- Proximity Key For Push Button Start Only - Redundant Digital Speedometer
- Sentry Key Engine Immobilizer- Systems Monitor- Urethane Gear Shift Knob
- Vanity w/Driver And Passenger Auxiliary Mirror

Exterior

- Black 3-Piece Hard Top -inc: Freedom Panel Storage Bag, Rear Window Defroster, Rear Window Wiper/Washer, No Soft Top
- Black Front Bumper w/4 Tow Hooks - Black Rear Bumper w/4 Tow Hooks

Option Packages

Factory Installed Packages

| | |
|--|---------|
| ENGINE: 3.6L V6 24V VVT UPG I W/ESS | |
| TRANSMISSION: 8-SPEED AUTOMATIC (850RE) | |
| -inc: TIP Start, Dana M200 Rear Axle, Hill Descent Control | \$2,750 |
| ALPINE PREMIUM AUDIO SYSTEM | |
| -inc: 220 Amp Alternator | \$1,295 |
| CONVENIENCE GROUP | |
| -inc: Universal Garage Door Opener | \$595 |
| TECHNOLOGY GROUP | |
| -inc: Google Android Auto, Cluster 7.0" TFT Color Display, USB Host Flip, Integrated Center Stack Radio, 7.0" Touchscreen Display, Air Conditioning w/Auto Temp Control, Radio: Uconnect 4 w/7" Display, Apple CarPlay, Air Filtering, GPS Antenna Input | \$995 |
| QUICK ORDER PACKAGE 24L ALTITUDE | |
| -inc: Engine: 3.6L V6 24V VVT UPG I w/ESS, Transmission: 8-Speed Automatic (850RE), Speed Sensitive Power Locks, Freedom Panel Storage Bag, Rear Window Defroster, Rear Window Wiper/Washer, No Soft Top, Anti-Lock 4-Wheel Disc HD Brakes, Automatic Headlamps, Leather Wrapped Steering Wheel, Altitude Package. Front 1-Touch Down Power Windows. | \$4,895 |

- Black Front Bumper w/2 Tow Hooks- Black Rear Bumper w/1 Tow Hook
- Front Fog Lamps- 110 MPH Vehicle Max Speed Calibration
- Aero-Composite Halogen Headlamps w/Delay-Off- Black Door Handles
- Black Fender Flares- Black Side Windows Trim- Clearcoat Paint
- Conventional Rear Cargo Access- Convertible w/Fixed Roll-Over Protection
- Deep Tint Sunscreen Windows- Full-Size Spare Tire Mounted Outside Rear
- Galvanized Steel/Aluminum/Magnesium Panels- Non-Lock Fuel Cap w/o Discriminator
- Tires: 255/70R18 All Season- Variable Intermittent Wipers
- Wheels: 18" x 7.5" Gloss Black Aluminum

Safety

- 6-Way Driver Seat -inc: Manual Recline, Height Adjustment, Fore/Aft Movement and Manual Lumbar Support
- Cloth Low-Back Bucket Seats
- Front Seats w/Cloth Back Material and Manual Driver Lumbar
- Full Carpet Floor Covering -inc: Carpet Front And Rear Floor Mats
- Gauges -inc: Speedometer, Odometer, Engine Coolant Temp, Tachometer, Engine Hour Meter, Trip Odometer and Trip Computer
- Manual Air Conditioning- Trip Computer- 2 12V DC Power Outlets
- 2 Seatback Storage Pockets
- 4-Way Passenger Seat -inc: Manual Recline and Fore/Aft Movement
- 60-40 Folding Split-Bench Front Facing Fold Forward Seatback Cloth Rear Seat
- Analog Display- Cargo Space Lights- Carpet Floor Trim, Carpet And Rubber Mat
- Compass- Cruise Control w/Steering Wheel Controls- Day-Night Rearview Mirror
- Delayed Accessory Power- Fade-To-Off Interior Lighting- Front And Rear Map Lights
- Front Center Armrest w/Storage
- Full Floor Console w/Locking Storage and 2 12V DC Power Outlets
- HVAC -inc: Console Ducts- Illuminated Front Cupholder- Illuminated Rear Cupholder
- Instrument Panel Bin, Dashboard Storage, Driver / Passenger And Rear Door Bins
- Locking Cargo Area Concealed Storage- Locking Glove Box- MOPAR Hardtop Headliner
- Manual Adjustable Front Head Restraints and Foldable Rear Head Restraints
- Manual Tilt/Telescoping Steering Column- Outside Temp Gauge
- Proximity Key For Push Button Start Only - Redundant Digital Speedometer
- Sentry Key Engine Immobilizer- Systems Monitor- Urethane Gear Shift Knob
- Vanity w/Driver And Passenger Auxiliary Mirror

Mechanical

- Brakes w/Brake Assist and Hill Hold Control- Transmission: 6-Speed Manual
- 1233lbs. Maximum Payload- 180 Amp Alternator- 21.5 Gal. Fuel Tank- 3 Skid Plates
- 3.45 Rear Axle Ratio- 50 State Emissions
- 650CCA Maintenance-Free Battery w/Run Down Protection- Auto Locking Hubs
- Aux Battery- Brake Actuated Limited Slip Differential
- Electro-Hydraulic Power Assist Steering- Engine Oil Cooler
- Engine: 3.6L V6 24V VVT UPG I w/ESS- Front And Rear Anti-Roll Bars
- GVWR: 5,300 lbs- Heavy Duty Suspension w/Gas Shocks
- Leading Link Front Suspension w/Coil Springs- Manual Transfer Case
- Part-Time Four-Wheel Drive- Single Stainless Steel Exhaust
- Stop-Start Dual Battery System- Towing Equipment -inc: Trailer Sway Control
- Trailing Arm Rear Suspension w/Coil Springs

Body Color Grille w/Gloss Black, Power Heated Mirrors, Wrangler Decal, Black Interior Accents, Gloss Black Instrument Panel Bezels, Matte Black Jeep Badge, Security Alarm, Bridgestone Brand Tires, Remote Keyless Entry, Sun Visors w/Illuminated Vanity Mirrors

BLACK CLEARCOAT

Option Packages Total \$10,530