



2008 Ford Mustang Shelby GT500

Website Price \$30,995

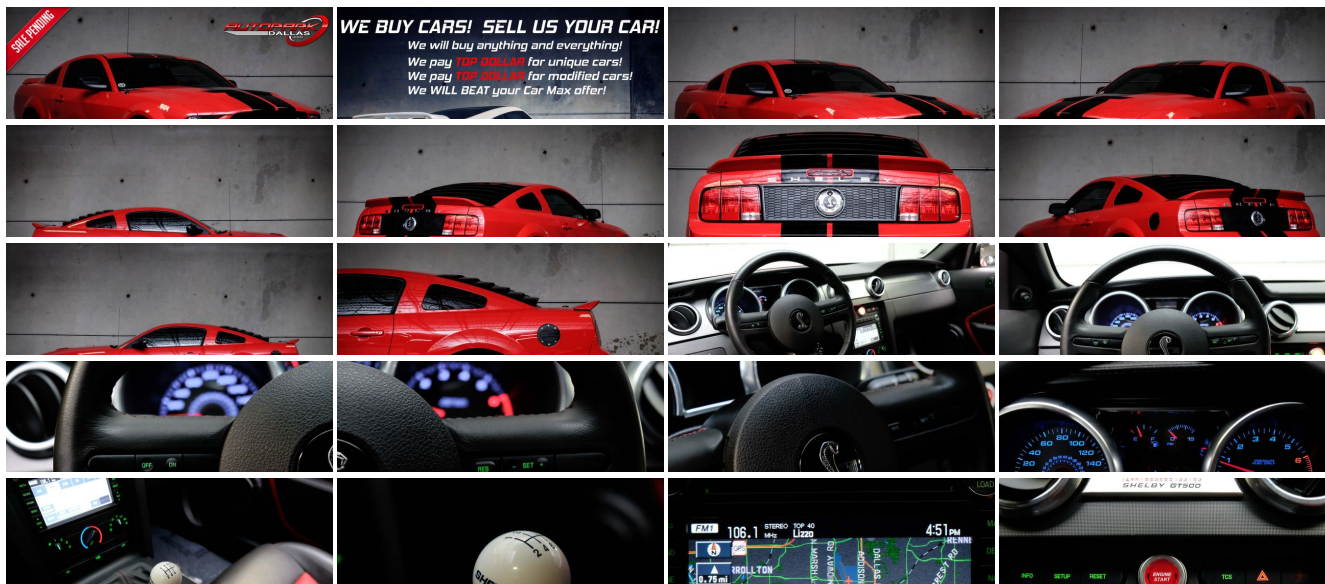
View this vehicle on our website at autoparkdallas.com



(214) 945-2601

2061 S Stemmons Fwy , Lewisville, TX 75067

- Photos
- Details
- Contact



Specifications:

Year:	2008
VIN:	1ZVHT88S885133163
Make:	Ford
Model/Trim:	Mustang Shelby GT500
Condition:	Pre-Owned
Body:	Coupe
Exterior:	Torch Red
Engine:	5.4L 32-VALVE SUPERCHARGED V8 ENGINE
Interior:	Charcoal/Crimson Leather
Transmission:	6-SPEED TREMEC MANUAL TRANSMISSION
Mileage:	7,680
Drivetrain:	Rear Wheel Drive
Economy:	City 14 / Highway 20

Vehicle Description

AutoPark Dallas is excited to offer you this Garage-Kept 2008 Ford Mustang Shelby GT500 for sale! If the insanely low miles didn't already sell you on this pony, then let me further introduce you to a amazing garage-kept Shelby GT500! This Mustang at a whooping 500 stocks horses and 480 pounds of torque is a wild ride, but what takes this buckling ride even further is the small extra goodies that get you a bit more thrill. From the open JLT intake system assisting the life of the motor, a subtle addition of a Metco Double Bearing Auxiliary Idler Pulley giving an additional boost support at higher RPM, and a more aggressive exhaust tone coming from the Steeda Axle-Back Exhaust makes this Mustang ready to rock-n-roll! Come check out this piece of American Muscle history parked beautifully in our 16,000 Sq Ft Showroom located in Addison, Tx amongst our inventory of 100+ other unique and luxury vehicles!

2008 Ford Mustang GT500

2 Previous Owners!

Clean CarFax!

LOW MILEAGE!

Garage-Kept Condition!

Original Window Stick, Owners Manual, & Shelby GT500 Certificate!

MODIFICATIONS!

Steeda Shelby Mustang Axle-Back Exhaust

Metco Double-Bearing Auxiliary Idler Pulley

OEM & Carbon Fiber Wrapped Spoiler w/ Extender

JLT Open-Air Intake System

SilverHorse Racing Push Button Engine

STOCK!

Torch Red Exterior

Two-Toned Charcoal/Crimson Leather Interior

GT500 Premium Trim Package!

Touch-Screen Navigation

Single-Zone Air Conditioning

CD & AUX Capable
Cruise Control
Powered Driver Seat
HID Headlamps
Ambient Lighting
Steering Wheel Mounted Controls
Remote Keyless Entry
Limited Slip Differential
5.4L 32-VALVE Supercharged V8 Engine
6-Speed Tremec Manual Transmission
Rear Wheel Drive
Professionally Detailed!
Well Maintained!
AMAZING CONDITION!
AND SO MUCH MORE!!!

Financing is available!

Get pre-approved in no time by filling out a credit application on the finance section of our website!

We also offer different extended warranty options!

SELL US YOUR CAR! WE BUY CARS!

****All vehicles are priced for QUICK SALE. All REASONABLE offers will be considered****

AutoPark Dallas is dedicated to offering a level of customer service not usually found in the automobile industry. We take pride in continuing this service long after the vehicle has been delivered. We strive for excellence and make every effort to see that our customer is completely satisfied with every purchase. Referrals and Testimonials is what our business is built on.

Our extensive buying experience guarantees quality, pre-owned and new vehicles hand-picked from factory sources. Our love for the automobile and our dislike of traditional dealership tactics motivate us to provide the service we do!

Pre-purchase inspections are always welcomed! We also offer airport shuttles, amazing finance options, extended warranties and so much more!

We accept trade-ins, will BUY your car (modified or not) even if you don't buy one from us, and offer consignment deals to SELL your vehicle for you! For more information just give us a CALL or TEXT!!

#214-945-2601

Call or Text **Anytime!**

Se habla Español

WE BUY CARS!

WWW.AUTOPARKDALLAS.COM

Installed Options

Interior

- (2) cupholders- (2) pwr points- Active anti-theft system-inc: perimeter/intrusion alarms
- Air conditioning- Aluminum accented air register vents
- Brushed-aluminum accented (6) gauge instrument cluster-inc: boost gauge, message center, SVT graphics
- Center console-inc: armrest, storage bin
- Front color-keyed floor mats w/driver retention hook- Front door map pockets
- Header-mounted dome lamp- Illuminated entry
- Leather-wrapped tilt steering wheel w/red stitching, unique thumb pads
- My Color customizable 125-color interior lighting system- Pwr door locks- Pwr windows
- Rear window defroster- Remote keyless entry- Scuff plate w/bright "SVT" insert
- Shaker 500 audio system-inc: AM/FM stereo w/6-disc in-dash CD changer, MP3 player, (6) speakers
- Soft vinyl door trim inserts- Speed control- Tire pressure monitoring system
- Unique leather sport bucket seats w/cobra logo-inc: 6-way pwr adjust driver seat w/pwr lumbar, increased lateral support
- Unique shift knob w/leather shift boot & parking brake handle

Exterior

- Complex reflector halogen headlamps- Dual pwr exterior mirrors- Front fog lamps
- Over-the-top racing stripes & GT500 side stripes
- Unique aluminum hood w/functional air vents - Unique color-keyed front/rear fascia
- Unique rear spoiler- Unique upper & lower grilles
- Variable intermittent windshield wipers

Safety

- (2) cupholders- (2) pwr points- Active anti-theft system-inc: perimeter/intrusion alarms
- Air conditioning- Aluminum accented air register vents
- Brushed-aluminum accented (6) gauge instrument cluster-inc: boost gauge, message center, SVT graphics
- Center console-inc: armrest, storage bin
- Front color-keyed floor mats w/driver retention hook- Front door map pockets
- Header-mounted dome lamp- Illuminated entry
- Leather-wrapped tilt steering wheel w/red stitching, unique thumb pads
- My Color customizable 125-color interior lighting system- Pwr door locks- Pwr windows
- Rear window defroster- Remote keyless entry- Scuff plate w/bright "SVT" insert
- Shaker 500 audio system-inc: AM/FM stereo w/6-disc in-dash CD changer, MP3 player, (6) speakers
- Soft vinyl door trim inserts- Speed control- Tire pressure monitoring system
- Unique leather sport bucket seats w/cobra logo-inc: 6-way pwr adjust driver seat w/pwr lumbar, increased lateral support
- Unique shift knob w/leather shift boot & parking brake handle

Mechanical

- "Fix a flat" flat tire inflation kit
- 18" x 9.5" GT500 unique bright machined wheels w/SVT center caps
- 4-wheel anti-lock braking system (ABS)
- 5.4L 32-valve DOHC supercharged & intercooled V8 engine
- 6-speed Tremec manual transmission- Limited slip differential
- P255/45ZR18 performance front tires & P285/40ZR18 performance rear tires
- Pwr rack & pinion steering
- Pwr vented 4-wheel disc brakes w/Brembo front rotors & calipers - Rear wheel drive
- SVT-tuned MacPherson strut front suspension w/unique dampers & coil springs
- SVT-tuned live-axle rear suspension w/unique dampers & coil springs
- Stainless steel tuned X-pipe design dual exhaust - Traction control- Wheel locking kits

Option Packages

Factory Installed Packages

5.4L 32-VALVE SUPERCHARGED V8 ENGINE

6-SPEED TREMEC MANUAL TRANSMISSION

AMBIENT LIGHTING

\$295

GT500 PREMIUM INTERIOR TRIM PKG

-inc: wrapped & stitched instrument panel
brow/center console, upgraded door armrest,
electrochromic rearview mirror w/compass,
aluminum pedal covers

\$595

HID HEADLIGHTS

\$525

SIRIUS SATELLITE RADIO

-inc: receiver module, antenna

\$195

TOUCH-SCREEN DVD-BASED NAVIGATION SYSTEM

\$1,995

50-STATE EMISSIONS

SOLID PAINT

LEATHER SPORT BUCKET SEATS

GT500 COUPE SERIES ORDER CODE

EBONY STRIPES

Option Packages Total

\$3,605

AUTOPARK

Dallas

Auto Park Dallas

View this car on our website at autoparkdallas.com/6713912

Website: autoparkdallas.com

Phone: (214) 945-2601

Map: 2061 S Stemmons Fwy, Lewisville, TX 75067

