



## 2008 Mercedes-Benz CLK350 3.5L

**Our Price \$9,995**

View this vehicle on our website at [us1autony.com](http://us1autony.com)

U.S. 1 Auto Sales

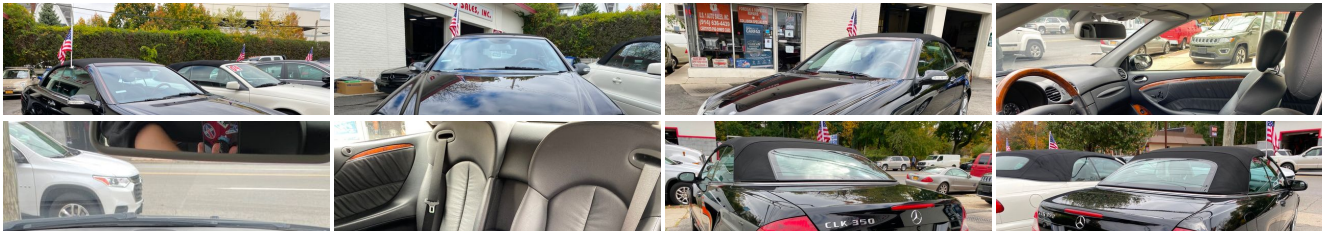
[914-636-4439](tel:914-636-4439)

109 E Main St, New Rochelle, NY 10801

[Photos](#)

[Details](#)

[Contact](#)



### Specifications:

<b>Year:</b>	2008
<b>VIN:</b>	<a href="#">WDBTK56F78T098081</a>
<b>Make:</b>	Mercedes-Benz
<b>Model/Trim:</b>	CLK350 3.5L
<b>Condition:</b>	Pre-Owned
<b>Body:</b>	Convertible

<b>Exterior:</b>	Black
<b>Engine:</b>	3.5L DOHC 24-valve V6 engine
<b>Interior:</b>	Black Leather
<b>Mileage:</b>	96,185
<b>Drivetrain:</b>	Rear Wheel Drive
<b>Economy:</b>	City 17 / Highway 25

## Vehicle Description

### Installed Options

#### Interior

- AM/FM/Weatherband radio w/CD player- Leather upholstery
- Leather-trimmed 4-spoke pwr 4-way tilt/telescopic steering wheel-inc: memory, audio & multi-function display controls
- SmartKey infrared remote-inc: trunk open, windows open/close, panic alarm, fuel filler door, selective unlock, auto-lock, soft top raise/lower
- (6) speaker audio system & automatic vehicle-speed-sensitive volume adjustment
- 10-way pwr front seats w/3-position memory - Anti-theft alarm system
- Automatic dual-zone climate control-inc: dual digital temp controls, electrostatic dust, pollen & active charcoal filters, sun, humidity & dew point sensors, tunnel mode w/1-touch closing of all windows
- Cruise control- Dual height adjustable rear head restraints- Fine-mesh wind deflector
- Hand-polished Burl Walnut wood trim
- Instrumentation-inc: speedometer, tachometer, quartz clock, electronic fuel & coolant temp bar-graph gauges
- Leather-trimmed shift knob- Locator lighting
- Mercedes-Benz Maintenance System Plus display-inc: distance remaining to next maintenance, type of service due, reminders
- Multi-function displays in instrument cluster-inc: trip computer, oil level check, digital speedometer, reminder & malfunction messages, driver- programmable settings, audio status, exterior temp gauge
- Night security illumination
- Pwr automatic height adjustable front head restraints w/manual adjustable fore-aft
- Pwr windows w/front 1-touch express up/down, (1) button lowering/raising of all windows
- Rear window defroster w/auto-shutoff based on time, driving speed & exterior temp
- Tele Aid global positioning system (GPS) satellite system-inc: stolen vehicle recovery, remote door unlock service, automatic alarm & collision notification
- Tire pressure monitoring system- Variable trunk compartment

#### Exterior

- Programmable daytime running lamps w/auto override
- Driver-selectable light-sensing headlamps
- Electro-hydraulic insulated all-season convertible soft top w/glass rear window
- Front halogen foglamps- Pwr heated mirrors w/LH mirror memory
- Single rear red foglamp- Variable intermittent rain-sensing windshield wipers

#### Safety

- AM/FM/Weatherband radio w/CD player- Leather upholstery
- Leather-trimmed 4-spoke pwr 4-way tilt/telescopic steering wheel-inc: memory, audio & multi-function display controls
- SmartKey infrared remote-inc: trunk open, windows open/close, panic alarm, fuel filler door, selective unlock, auto-lock, soft top raise/lower
- (6) speaker audio system & automatic vehicle-speed-sensitive volume adjustment
- 10-way pwr front seats w/3-position memory - Anti-theft alarm system
- Automatic dual-zone climate control-inc: dual digital temp controls, electrostatic dust, pollen & active charcoal filters, sun, humidity & dew point sensors, tunnel mode w/1-touch closing of all windows
- Cruise control- Dual height adjustable rear head restraints- Fine-mesh wind deflector
- Hand-polished Burl Walnut wood trim
- Instrumentation-inc: speedometer, tachometer, quartz clock, electronic fuel & coolant temp bar-graph gauges
- Leather-trimmed shift knob- Locator lighting
- Mercedes-Benz Maintenance System Plus display-inc: distance remaining to next maintenance, type of service due, reminders
- Multi-function displays in instrument cluster-inc: trip computer, oil level check, digital speedometer, reminder & malfunction messages, driver- programmable settings, audio status, exterior temp gauge

- Night security illumination
- Pwr automatic height adjustable front head restraints w/manual adjustable fore-aft
- Pwr windows w/front 1-touch express up/down, (1) button lowering/raising of all windows
- Rear window defroster w/auto-shutoff based on time, driving speed & exterior temp
- Tele Aid global positioning system (GPS) satellite system-inc: stolen vehicle recovery, remote door unlock service, automatic alarm & collision notification
- Tire pressure monitoring system- Variable trunk compartment

## Mechanical

- 17" x 7.5" front 5-split spoke aluminum wheels
- 17" x 8.5" rear 5-split spoke aluminum wheels
- Anti-lock braking system (ABS) w/brake assist system
- Electronic stability program (ESP)- 3.5L DOHC 24-valve V6 engine
- 7-speed driver-adaptive electronically controlled automatic transmission
- Enlarged polished chrome exhaust finisher- Front/rear stabilizer bars
- Independent 3-link front suspension-inc: coil springs over gas-pressurized shock absorbers, anti-dive geometry
- Independent 5-arm multi-link rear suspension-inc: separate coil springs, gas- pressurized shock absorbers, anti-squat & alignment control
- P225/45R17 front high performance tires- P245/40R17 rear high performance tires
- Pwr 1-piston ventilated front & 2-piston solid rear disc brakes - Rear wheel drive
- Vehicle-speed-sensitive pwr rack & pinion steering

U.S. 1 Auto Sales

U.S. 1 Auto Sales

View this car on our website at [us1autony.com/6713020](https://us1autony.com/6713020)

Website: [us1autony.com](https://us1autony.com)

Phone: [914-636-4439](tel:914-636-4439)

Map: [109 E Main St, New Rochelle, NY 10801](#)



