



2017 Chevrolet Tahoe LS

Jimmy Degollado 956-423-3434

Our Price \$34,995

View this vehicle on our website at elliffmotors.com

Elliff Motors

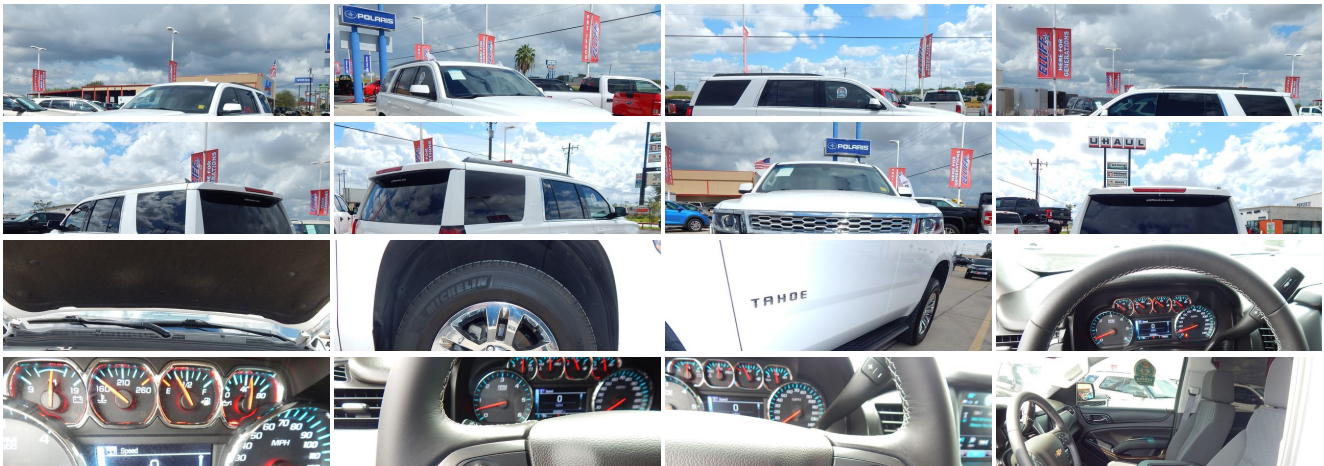
[956-423-3434](tel:956-423-3434)

1307 West Harrison Avenue, Harlingen, TX 78550

Photos

Details

Contact





Specifications:

Year:	2017
VIN:	1GNSCAKC3HR281836
Make:	Chevrolet
Stock:	35473
Model/Trim:	Tahoe LS
Condition:	Pre-Owned
Body:	SUV
Exterior:	Summit White
Engine:	ENGINE, 5.3L ECOTEC3 V8 WITH ACTIVE FUEL MANAGEMENT, DIRECT INJECTION AND VARIABLE VALVE TIMING
Interior:	Black Cloth
Mileage:	24,649
Drivetrain:	Rear Wheel Drive
Economy:	City 16 / Highway 23

Vehicle Description

Installed Options

Interior

- Console, floor with storage area, cup holders and auxiliary jack (Not available with (AZ3) 40/20/40 split-bench front seat.)
- Cruise control, electronic with set and resume speed
- Door locks, power programmable with lockout protection and delayed locking
- Floor mats, color-keyed carpeted first and second row, removable
- Remote Keyless Entry, extended-range- Seat adjuster, front passenger 6-way power
- Seat trim, cloth
- Seating, front bucket with Premium Cloth passenger seat includes power fore/aft, power recline and Power lumbar, 10-way power driver seat includes 6-way power cushion, 2-way power lumbar control and power recline (Includes (AYQ) frontal and side-impact for driver and front passenger air bags and (D07) Front center console. Upgradeable to (AZ3) front 40/20/40 split-bench seat.)
- Steering wheel controls, mounted audio and cruise controls includes Driver Information Center controls
- Assist handles, 1st row passenger and 2nd row outboard seats
- Cargo management system- Cargo net
- Climate control, tri-zone automatic with individual climate settings for driver, right-front passenger and rear passengers
- Conversation mirror- Defogger, rear-window electric
- Driver Information Center, 4.2" diagonal multi-color
- Floor covering, color-keyed carpeting
- Lighting, interior with dome light, driver- and passenger-side door switch with delayed entry feature, cargo lights, door handle or Remote Keyless Entry-activated illuminated entry and map lights in front and second seat positions.
- Mirror, inside rearview manual day/night
- OnStar Basic plan for 5 years includes limited vehicle mobile app features, Monthly Diagnostics Report and Dealer Maintenance Notification (Basic Plan available for 5 years from the date of vehicle delivery and is transferable. Does not include Emergency, Security or Navigation services.)
- Power outlet, 110-volt
- Power outlets, 5 auxiliary, 12-volt includes outlets in the instrument panel, console, back of console, 1 in 3rd row and 1 in cargo area (When (AZ3) 40/20/40 split-bench front seats are ordered, the outlet on the back of the console is lost.)
- Remote vehicle start- Seat, third row manual 60/40 split-folding bench, fold flat
- Seats, second row 60/40 split-folding bench, manual - Steering column, Tilt-Wheel
- Steering wheel, leather-wrapped
- Warning tones headlamp on, key-in-ignition, driver and right-front passenger safety belt unfasten and turn signal on

Option Packages

Factory Installed Packages

ENGINE, 5.3L ECOTEC3 V8 WITH ACTIVE FUEL MANAGEMENT, DIRECT INJECTION AND VARIABLE VALVE TIMING

includes aluminum block construction (355 hp [265 kW] @ 5600 rpm, 383 lb-ft of torque [518 N-m] @ 4100 rpm)

- Windows, power, with Express-Down and Express-Up on front doors and lock out features

Exterior

- Assist steps, Black (Premier includes chrome accent strip) (Deleted when (RVQ) Assist step kit, Black, LPO or (VXH) Assist step kit, Chrome, LPO are ordered.)
- Tire, spare P265/70R17 all-season, blackwall- Tires, P265/65R18 all-season, blackwall
- Wheel, full-size spare, 17" (43.2 cm) steel
- Wheels, 18" x 8.5" (45.7 cm x 21.6 cm) aluminum with high-polished finish
- Active aero shutters, front- Fascia, front body-color- Fascia, rear body-color
- Glass, deep-tinted- Liftgate, rear manual- Luggage rack side rails, roof-mounted
- Mirrors, outside heated power-adjustable, manual-folding and color keyed driver mirror includes spotter mirror
- Tire carrier, lockable outside spare, winch-type mounted under frame at rear
- Wiper, rear intermittent with washer- Wipers, front intermittent, Rainsense

Safety

- Console, floor with storage area, cup holders and auxiliary jack (Not available with (AZ3) 40/20/40 split-bench front seat.)
- Cruise control, electronic with set and resume speed
- Door locks, power programmable with lockout protection and delayed locking
- Floor mats, color-keyed carpeted first and second row, removable
- Remote Keyless Entry, extended-range- Seat adjuster, front passenger 6-way power
- Seat trim, cloth
- Seating, front bucket with Premium Cloth passenger seat includes power fore/aft, power recline and Power lumbar, 10-way power driver seat includes 6-way power cushion, 2-way power lumbar control and power recline (Includes (AYQ) frontal and side-impact for driver and front passenger air bags and (D07) Front center console. Upgradeable to (AZ3) front 40/20/40 split-bench seat.)
- Steering wheel controls, mounted audio and cruise controls includes Driver Information Center controls
- Assist handles, 1st row passenger and 2nd row outboard seats
- Cargo management system- Cargo net
- Climate control, tri-zone automatic with individual climate settings for driver, right-front passenger and rear passengers
- Conversation mirror- Defogger, rear-window electric
- Driver Information Center, 4.2" diagonal multi-color
- Floor covering, color-keyed carpeting
- Lighting, interior with dome light, driver- and passenger-side door switch with delayed entry feature, cargo lights, door handle or Remote Keyless Entry-activated illuminated entry and map lights in front and second seat positions.
- Mirror, inside rearview manual day/night
- OnStar Basic plan for 5 years includes limited vehicle mobile app features, Monthly Diagnostics Report and Dealer Maintenance Notification (Basic Plan available for 5 years from the date of vehicle delivery and is transferable. Does not include Emergency, Security or Navigation services.)
- Power outlet, 110-volt
- Power outlets, 5 auxiliary, 12-volt includes outlets in the instrument panel, console, back of console, 1 in 3rd row and 1 in cargo area (When (AZ3) 40/20/40 split-bench front seats are ordered, the outlet on the back of the console is lost.)
- Remote vehicle start- Seat, third row manual 60/40 split-folding bench, fold flat
- Seats, second row 60/40 split-folding bench, manual- Steering column, Tilt-Wheel
- Steering wheel, leather-wrapped
- Warning tones headlamp on, key-in-ignition, driver and right-front passenger safety belt unfasten and turn signal on
- Windows, power, with Express-Down and Express-Up on front doors and lock out features

Mechanical

- Transmission, 6-speed automatic, electronically controlled with overdrive and tow/haul mode
- Alternator, 150 amps- Battery, 720 cold-cranking amps with 80 amp hour rating
- Cooling, auxiliary transmission oil cooler, heavy-duty air-to-oil
- Cooling, external engine oil cooler, heavy-duty air-to-oil integral to driver side of radiator
- Differential, heavy-duty locking rear
- Engine, 5.3L EcoTec3 V8 with Active Fuel Management, Direct Injection and Variable Valve Timing includes aluminum block construction (355 hp [265 kW] @ 5600 rpm, 383 lb-ft of torque [518 N-m] @ 4100 rpm)
- GVWR, 7100 lbs. (3221 kg) (Requires 2WD model.) - Hill Start Assist
- Rear axle, 3.08 ratio (Not available with (NHT) Max Trailering Package.)
- Rear wheel drive- Steering, power
- Suspension Package, Premium Smooth Ride (Not available with (NHT) Max Trailering Package.)
- Suspension, front coil-over-shock with stabilizer bar
- Suspension, rear multi-link with coil springs- Trailer sway control

- Trailering equipment includes trailering hitch platform, 7-wire harness with independent fused trailering circuits mated to a 7-way sealed connector and 2" trailering receiver

Elliff Motors

Elliff Motors

View this car on our website at elliffmotors.com/6711834

Website: elliffmotors.com

Phone: [956-423-3434](tel:956-423-3434)

Map: [1307 West Harrison Avenue, Harlingen, TX 78550](#)

