



## 2006 Pontiac GTO w/ Upgrades!

Website Price \$18,995

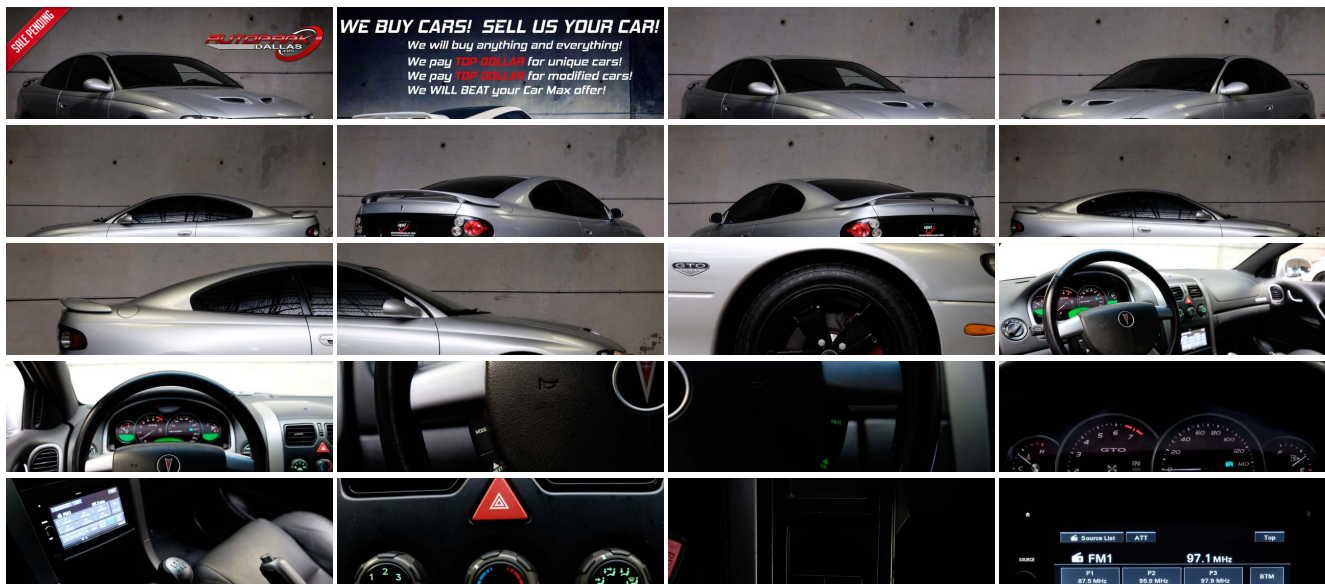
View this vehicle on our website at [autoparkdallas.com](http://autoparkdallas.com)



(214) 945-2601

2061 S Stemmons Fwy , Lewisville, TX 75067

- Photos
- Details
- Contact



## Specifications:

<b>Year:</b>	2006
<b>VIN:</b>	<a href="#">6G2VX12U06L819970</a>
<b>Make:</b>	Pontiac
<b>Model/Trim:</b>	GTO w/ Upgrades!
<b>Condition:</b>	Pre-Owned
<b>Body:</b>	Coupe
<b>Exterior:</b>	Quicksilver Metallic
<b>Engine:</b>	ENGINE, 6.0L V8 SFI ALUMINUM
<b>Interior:</b>	Black Leather
<b>Transmission:</b>	TRANSMISSION, 6-SPEED MANUAL
<b>Mileage:</b>	57,649
<b>Drivetrain:</b>	Rear Wheel Drive
<b>Economy:</b>	City 16 / Highway 21

## Vehicle Description

AutoPark Dallas is excited to offer you this LOW MILEAGE 2006 Pontiac GTO for sale! Considered the ultimate sleeper car back in their hay-days, the Pontiac GTO bare not much eye appeal on the exterior but under the hood was a different story. Equipped with the LS2 motor that is in the Chevrolet Corvette, these Pontiac coupes were the easiest vehicle to do mild modifications to that will make them squeal tires and destroy unsuspecting competition. Our GTO here at APD is equipped with a few mild modifications such as a BORLA exhaust system to assist in a mean exhaust note and a K&N Open-Air Intake to help with better air flow for the LS2, but those aren't the crowning gem as the GTO is crazy low miles and has had only 1 previous owner! Come check out this blast from the Pontiac past as this GTO is parked in our indoor 16,000 Sq Ft Showroom located in Addison, Tx. amongst our inventory of 100+ other unique and luxury vehicles!

---

### 2006 Pontiac GTO

**\*1 OWNER!\***

**\*Clean CarFax!\***

**\*LOW MILEAGE!\***

### MODIFICATIONS!

BORLA Exhaust System

K&N Open-Air Intake

SONY Stereo System

Custom Gloss Black GTO Wheels

### STOCK!

Quicksilver Metallic Exterior

Black Leather Interior

Single-Zone Air Conditioning

Cruise Control

Limited Slip Differential

Daytime Running Lamps

Traction Control w/ On/Off Switch

Steering Wheel Mounted Controls

6.0L V8 SFI Aluminum Engine

6-Speed Manual Transmission

Rear Wheel Drive

Professionally Detailed!

Well Maintained!

AND SO MUCH MORE!!!

## Financing is available!

Get pre-approved in no time by filling out a credit application on the finance section of our website!

We also offer different extended warranty options!

**SELL US YOUR CAR! WE BUY CARS!**

**\*\*All vehicles are priced for QUICK SALE. All REASONABLE offers will be considered\*\***

AutoPark Dallas is dedicated to offering a level of customer service not usually found in the automobile industry. We take pride in continuing this service long after the vehicle has been delivered. We strive for excellence and make every effort to see that our customer is completely satisfied with every purchase. Referrals and Testimonials is what our business is built on.

Our extensive buying experience guarantees quality, pre-owned and new vehicles hand-picked from factory sources. Our love for the automobile and our dislike of traditional dealership tactics motivate us to provide the service we do!

Pre-purchase inspections are always welcomed! We also offer airport shuttles, amazing finance options, extended warranties and so much more!

We accept trade-ins, will BUY your car (modified or not) even if you don't buy one from us, and offer consignment deals to SELL your vehicle for you! For more information just give us a CALL or TEXT!!

# #214-945-2601

## Call or Text **Anytime!**

## Se habla Español

**WE BUY CARS!**

# WWW.AUTOPARKDALLAS.COM

### Installed Options

#### Interior

- Air conditioning, manual single zone- Antenna, in-glass, rear window
- Console, front, center, floor, includes storage compartment and two accessory power outlets and twin cupholders
- Cruise control, electronic with set and resume speed, includes telltale in instrument panel cluster
- Defogger, rear-window, electric, includes front and side window outlets, driver and front passenger
- Door locks, power programmable, includes lockout protection and console mounted switch
- Driver Information Center, includes average speed, season odometer, average mpg, elapsed time, trip odometer, trip time remaining, trip distance remaining, fuel used, overspeed, range and instant mpg
- Floor mats, carpeted, front and rear

### Option Packages

#### Factory Installed Packages

ENGINE, 6.0L V8 SFI ALUMINUM  
(400 HP [297.9 kW] @ 5200 rpm, 400 lb.-ft.  
[546.7 N-m] @ 4000 rpm)

TRANSMISSION, 6-SPEED MANUAL

\$695

EMISSIONS, FEDERAL REQUIREMENTS

BLACK LEATHER SEATING

- Instrumentation, analog, backlit, includes speedometer, temperature, fuel and tachometer
- Keyless entry, remote, programmable (Includes Trunk release, remote.)
- Lighting, lamp interior roof, courtesy and dual reading, footwells and time delay on entry
- Map pockets, driver and front passenger, seatbacks - Mirror, inside rearview
- Seat adjuster, manual lumbar control, driver and front passenger
- Seat adjuster, power driver and front passenger, 8-way, increased travel speed for rear entry
- Seat headrest, front and height adjustable- Seats, front and rear sport bucket, leather
- Shift knob, leather trimmed- Sound system feature, 10-speaker sound system
- Sound system, ETR AM/FM stereo with 6-disc CD changer in-dash, auto-tone control and 200-watt Blaupunkt stereo
- Steering wheel, adjustable, rake and telescope, steering wheel mounted radio controls, includes leather-wrapped rim
- Storage, door bins- Theft-deterrent system, content protection
- Visors, vanity mirror illuminated with cover, driver and front passenger
- Windows, power, includes driver and right front passenger express-down

## Exterior

- Daytime running lamps- Door lock, cylinder driver side only- Fog lamps, front
- Headlamps, auto-on/off, programmable delay- Hood scoops- License plate cover, front
- Mirrors, outside rearview, power, LH/RH remote control, electric, manual folding, body-colored
- Spoiler, rear, aerodynamic- Tail lamps, rear, Gloss Black bezels
- Wipers, intermittent, front, controlled-cycle

## Safety

- Air conditioning, manual single zone- Antenna, in-glass, rear window
- Console, front, center, floor, includes storage compartment and two accessory power outlets and twin cupholders
- Cruise control, electronic with set and resume speed, includes telltale in instrument panel cluster
- Defogger, rear-window, electric, includes front and side window outlets, driver and front passenger
- Door locks, power programmable, includes lockout protection and console mounted switch
- Driver Information Center, includes average speed, season odometer, average mpg, elapsed time, trip odometer, trip time remaining, trip distance remaining, fuel used, overspeed, range and instant mpg
- Floormats, carpeted, front and rear
- Instrumentation, analog, backlit, includes speedometer, temperature, fuel and tachometer
- Keyless entry, remote, programmable (Includes Trunk release, remote.)
- Lighting, lamp interior roof, courtesy and dual reading, footwells and time delay on entry
- Map pockets, driver and front passenger, seatbacks - Mirror, inside rearview
- Seat adjuster, manual lumbar control, driver and front passenger
- Seat adjuster, power driver and front passenger, 8-way, increased travel speed for rear entry
- Seat headrest, front and height adjustable- Seats, front and rear sport bucket, leather
- Shift knob, leather trimmed- Sound system feature, 10-speaker sound system
- Sound system, ETR AM/FM stereo with 6-disc CD changer in-dash, auto-tone control and 200-watt Blaupunkt stereo
- Steering wheel, adjustable, rake and telescope, steering wheel mounted radio controls, includes leather-wrapped rim
- Storage, door bins- Theft-deterrent system, content protection
- Visors, vanity mirror illuminated with cover, driver and front passenger
- Windows, power, includes driver and right front passenger express-down

## Mechanical

- Tires, P245/45ZR17-95W, blackwall
- Transmission, 4-speed automatic, electronically controlled with overdrive (Requires (R8E) Gas guzzler tax.)
- Battery, Delco maintenance free, includes rundown protection
- Brake/transmission shift interlock, automatic transmission- Brakes, 4-wheel antilock
- Brakes, performance brake package with Red calipers and GTO Badge on front
- Drivetrain, rear-wheel drive
- Engine, 6.0L V8 SFI aluminum (400 HP [297.9 kW] @ 5200 rpm, 400 lb.-ft. [546.7 N-m] @ 4000 rpm)
- Exhaust outlets, split dual with single chrome-tipped outlets
- Exhaust, dual with bundled single side tips
- Fuel capacity, approximate, 18 gallons (68 liters)- Fuel filler door release, power
- Limited Slip Differential- Steering, power, rack-and-pinion
- Suspension, Sport, independent rear suspension- Traction Control, with on/off switch
- Wheels, 17" x 8" (43.2 cm x 20.3 cm), 5-spoke aluminum, painted

## SEATS, FRONT AND REAR SPORT BUCKET, LEATHER

Option Packages Total

\$695

# AUTOPARK

## Dallas

Auto Park Dallas

View this car on our website at [autoparkdallas.com/6711092](http://autoparkdallas.com/6711092)

Website: [autoparkdallas.com](http://autoparkdallas.com)

Phone: (214) 945-2601

Map: 2061 S Stemmons Fwy, Lewisville, TX 75067

