



## 2020 Chevrolet Trax LS

**Our Price \$21,998**

View this vehicle on our website at [texaschevytrucks.com](https://texaschevytrucks.com)

Winningham Chevrolet

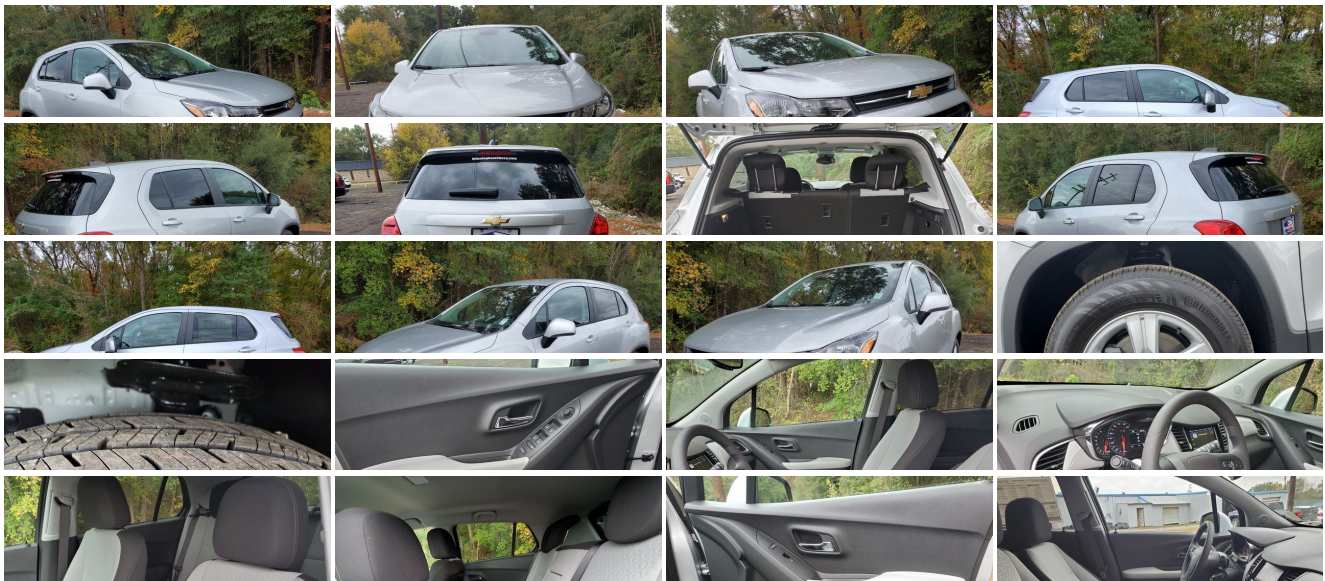
[9038432561](tel:9038432561)

701 S Wood St (US 271), Gilmer, TX 75644

Photos

Details

Contact



Specifications:

Year:	2020
VIN:	3GNCJKSBXLL182079
Make:	Chevrolet
Stock:	N1022
Model/Trim:	Trax LS
Condition:	New
Body:	SUV
Exterior:	Silver Ice Metallic
Engine:	ENGINE, ECOTEC TURBO 1.4L VARIABLE VALVE TIMING DOHC 4-CYLINDER SEQUENTIAL MFI
Interior:	Gray Cloth
Mileage:	5,585
Drivetrain:	Front Wheel Drive
Economy:	City 26 / Highway 31

Vehicle Description

Silver Ice Metallic 2020 Chevrolet Trax LS FWD 6-Speed Automatic ECOTEC 1.4L I4 SMPI DOHC Turbocharged VVT 16" Aluminum Wheels, 2 USB Ports w/Auxiliary Input Jack, 2-Way Manual Front Passenger Seat Adjuster, 3.53 Final Drive Axle Ratio, 4-Way Manual Driver Seat Adjuster, 6 Speakers, 6-Speaker Audio System Feature, ABS brakes, Air Conditioning, AM/FM radio, Brake assist, Bumpers: body-color, Cloth Seat Trim, Compass, Deep-Tinted Rear Glass Windows & Liftgate, Delay-off headlights, Driver door bin, Driver vanity mirror, Driver's Seat Mounted Armrest, Dual front impact airbags, Dual front side impact airbags, Electronic Automatic Cruise Control, Electronic Stability Control, Emergency communication system: OnStar and Chevrolet connected services capable, Exterior Parking Camera Rear, Front anti-roll bar, Front Bucket Seats, Front Bucket Seats w/Driver Power Lumbar, Front License Plate Bracket, Front reading lights, Front wheel independent suspension, Fully automatic headlights, Illuminated entry, Knee airbag, Low tire pressure warning, Occupant sensing airbag, Outside temperature display, Overhead airbag, Panic alarm, Passenger door bin, Passenger vanity mirror, Power door mirrors, Power steering, Power windows, Preferred Equipment Group 1LS, Premium audio system: Chevrolet MyLink, Radio data system, Radio: Chevrolet Infotainment 3 System, Rear seat center armrest, Rear side impact airbag, Rear window defroster, Rear window wiper, Remote keyless entry, Security system, Split folding rear seat, Spoiler, Steering wheel mounted audio controls, Tachometer, Telescoping steering wheel, Tilt steering wheel, Tint & Cruise Package, Traction control, Trip computer, Variably intermittent wipers.

26/31 City/Highway MPG

Installed Options	Option Packages
<div><p><b>Interior</b></p><ul style="list-style-type: none"><li>- Seats, front bucket with driver power lumbar - Seat trim, cloth</li><li>- Seat, rear 60/40 split-bench, folding</li><li>- Floor mats, color-keyed and carpeted front and rear - Door locks, power programmable</li><li>- Remote Keyless Entry with panic alarm- Seat adjuster, driver 4-way manual</li><li>- Seat adjuster, front passenger 2-way manual- Seatback, front passenger flat-folding</li><li>- Map pocket, driver seatback- Head restraints, 2-way adjustable (up/down), front</li><li>- Armrest, driver seat- Steering wheel, 3-spoke, urethane</li><li>- Steering column, manual tilt and telescoping</li><li>- Steering wheel controls, mounted audio and phone interface controls</li><li>- Instrumentation with analog speedometer and tachometer</li><li>- Driver Information Center 3.5" monochrome display with True White back lighting and digital readouts, including speedometer, odometer, trip odometer and fuel gauge</li><li>- Speedometer, miles/kilometers</li><li>- Compass display located in the Driver Information Center - Keys, (2) foldable</li><li>- Windows, power with driver Express-Up/Down and front passenger and rear Express-Down</li><li>- Theft-deterrent system, unauthorized entry- Air conditioning, single-zone manual</li><li>- Air filter, particle- Heater duct, rear, floor- Defogger, rear-window, electric</li><li>- Cup holders, 4 in front console and 2 in rear center armrest</li><li>- Power outlet, auxiliary, 12-volt- Mirror, inside rearview manual day/night</li><li>- Visors, driver and front passenger vanity mirrors, covered</li><li>- Assist handles, driver, front passenger and rear outboard includes coat hooks on rear handles</li><li>- Lighting, interior with front reading lights and dome light</li><li>- Shift knob, satin silver and chrome - Cargo storage, tray under rear floor</li><li>- Cargo tie downs, 4 - Lighting, cargo area</li></ul></div>	<div><p><b>Factory Installed Packages</b></p><hr/><p>ENGINE, ECOTEC TURBO 1.4L VARIABLE VALVE TIMING DOHC 4-CYLINDER SEQUENTIAL MFI (138 hp [102.9 kW] @ 4900 rpm, 148 lb-ft of torque [199.8 N-m] @ 1850 rpm)</p></div>

- Chevrolet Connected Access capable (Subject to terms. See [onstar.com](http://onstar.com) or dealer for details.)

---

## Exterior

- Wheels, 16" (40.6 cm) aluminum- Tires, P205/70R16 all-season, blackwall
- Wheel, spare, 16" (40.6 cm) steel- Tire, compact spare
- Moldings, beltline side glass (Black.)
- Headlamps, halogen reflector with automatic on/off - Tail lamps, sculpted
- Mirrors, outside power-adjustable, body-color, manual-folding with Black base
- Windshield, solar absorbing- Windshield, acoustic laminated- Glass, solar absorbing
- Wipers, front intermittent- Wiper, rear intermittent- Door handles, body-color
- Liftgate, rear applique, body-color

---

## Safety

- Seats, front bucket with driver power lumbar - Seat trim, cloth
- Seat, rear 60/40 split-bench, folding
- Floor mats, color-keyed and carpeted front and rear - Door locks, power programmable
- Remote Keyless Entry with panic alarm- Seat adjuster, driver 4-way manual
- Seat adjuster, front passenger 2-way manual - Seatback, front passenger flat-folding
- Map pocket, driver seatback- Head restraints, 2-way adjustable (up/down), front
- Armrest, driver seat- Steering wheel, 3-spoke, urethane
- Steering column, manual tilt and telescoping
- Steering wheel controls, mounted audio and phone interface controls
- Instrumentation with analog speedometer and tachometer
- Driver Information Center 3.5" monochrome display with True White back lighting and digital readouts, including speedometer, odometer, trip odometer and fuel gauge
- Speedometer, miles/kilometers
- Compass display located in the Driver Information Center - Keys, (2) foldable
- Windows, power with driver Express-Up/Down and front passenger and rear Express-Down
- Theft-deterrent system, unauthorized entry- Air conditioning, single-zone manual
- Air filter, particle- Heater duct, rear, floor- Defogger, rear-window, electric
- Cup holders, 4 in front console and 2 in rear center armrest
- Power outlet, auxiliary, 12-volt- Mirror, inside rearview manual day/night
- Visors, driver and front passenger vanity mirrors, covered
- Assist handles, driver, front passenger and rear outboard includes coat hooks on rear handles
- Lighting, interior with front reading lights and dome light
- Shift knob, satin silver and chrome - Cargo storage, tray under rear floor
- Cargo tie downs, 4- Lighting, cargo area
- Chevrolet Connected Access capable (Subject to terms. See [onstar.com](http://onstar.com) or dealer for details.)

---

## Mechanical

- Transmission, 6-speed automatic
- Engine, ECOTEC Turbo 1.4L Variable Valve Timing DOHC 4-cylinder sequential MFI (138 hp [102.9 kW] @ 4900 rpm, 148 lb-ft of torque [199.8 N-m] @ 1850 rpm)
- Axle, 3.53 final drive ratio- Chassis, front-wheel drive- Battery, 60AH
- Alternator, 130 amps- Suspension, Ride and Handling
- Steering, power, non-variable ratio, electric
- Brakes, 4-wheel antilock, front disc/rear drum- Mechanical jack with tools

Winningham Chevrolet

Winningham Chevrolet

View this car on our website at [texaschevytrucks.com/6710590](http://texaschevytrucks.com/6710590)

Website: [texaschevytrucks.com](http://texaschevytrucks.com)

Phone: [9038432561](tel:9038432561)

Map: [701 S Wood St \(US 271\), Gilmer, TX 75644](#)

