



## 2003 Mercedes-Benz C240 2.6L

**Our Price \$4,495**

View this vehicle on our website at [us1autony.com](http://us1autony.com)

U.S. 1 Auto Sales

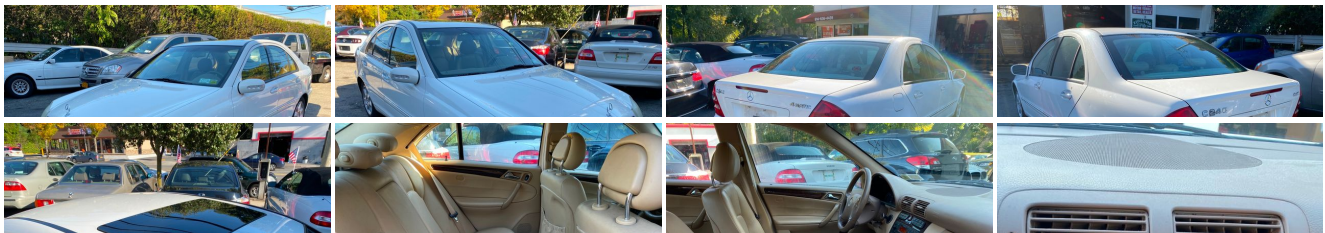
[914-636-4439](tel:914-636-4439)

109 E Main St, New Rochelle, NY 10801

Photos

Details

Contact



### Specifications:

<b>Year:</b>	2003
<b>VIN:</b>	WDBRF81J83F366493
<b>Make:</b>	Mercedes-Benz
<b>Model/Trim:</b>	C240 2.6L
<b>Condition:</b>	Pre-Owned
<b>Body:</b>	Sedan

Exterior:	White
Engine:	2.6L SOHC SMPI 18-valve aluminum-alloy V6 engine
Interior:	Tan Leather
Mileage:	98,270
Drivetrain:	All Wheel Drive
Economy:	City 19 / Highway 25

**Vehicle Description**

## Installed Options

### Interior

- 8-way adjustable front seats w/pwr height & recline feature
- Fiber-optic CD changer/cellular phone pre-wiring- Leather seating inserts
- Manually adjustable 4-way tilt/telescopic steering column
- Pwr windows w/one-touch express up/down for all windows
- Remote pwr window operation (open/close)
- 3-position front center armrest w/dual enclosed storage compartments
- AM/FM stereo/weatherband, cassette player, scan & seek, music search, (7) speaker audio system, speed compensated volume
- Anti-theft alarm system w/tow-away protection & remote panic feature
- Automatic climate control air conditioning-inc: dual temperature controls, electrostatic dust filter, humidity sensor, dash-top diffuser vent, rear cabin air vents, tunnel mode
- Cruise control w/digital speed readout- Dual illuminated visor vanity mirrors
- Electronic analog speedometer, tachometer & fuel gauge
- Hand polished laurel wood trim on doors, dash & console
- Integrated 3-button universal garage door controller
- Leather-trimmed 4-spoke steering wheel & shift knob
- Multi-function display in speedometer face-inc: digital clock, outside temp, digital speed, coolant temp, odometer, trip computer, oil level, audio & phone status, navigational directions, reminder & malfunction messages
- Rear center armrest w/slide-out dual cupholders- Rear window defroster
- Retractable dual front cupholders
- SmartKey remote entry system w/code protection & selective lock/unlock

### Exterior

- Driver-programmable daytime running lights w/auto on override in darkness
- Auto heated pwr mirrors- Auto lamp substitution
- Color-keyed door handles w/chrome trim
- Front windshield wipers w/heated windshield washer system - Halogen front fog lamps
- Single red rear fog lamp
- Variable focus Halogen headlamps w/driver selectable auto on/off feature

### Safety

- 8-way adjustable front seats w/pwr height & recline feature
- Fiber-optic CD changer/cellular phone pre-wiring- Leather seating inserts
- Manually adjustable 4-way tilt/telescopic steering column
- Pwr windows w/one-touch express up/down for all windows
- Remote pwr window operation (open/close)
- 3-position front center armrest w/dual enclosed storage compartments
- AM/FM stereo/weatherband, cassette player, scan & seek, music search, (7) speaker audio system, speed compensated volume
- Anti-theft alarm system w/tow-away protection & remote panic feature
- Automatic climate control air conditioning-inc: dual temperature controls, electrostatic dust filter, humidity sensor, dash-top diffuser vent, rear cabin air vents, tunnel mode
- Cruise control w/digital speed readout- Dual illuminated visor vanity mirrors
- Electronic analog speedometer, tachometer & fuel gauge
- Hand polished laurel wood trim on doors, dash & console
- Integrated 3-button universal garage door controller
- Leather-trimmed 4-spoke steering wheel & shift knob
- Multi-function display in speedometer face-inc: digital clock, outside temp, digital speed, coolant temp, odometer, trip computer, oil level, audio & phone status, navigational directions, reminder & malfunction messages
- Rear center armrest w/slide-out dual cupholders- Rear window defroster
- Retractable dual front cupholders
- SmartKey remote entry system w/code protection & selective lock/unlock

### Mechanical

- 5-speed automatic transmission- Anti-lock braking system w/brake assist
- Automatic slip control (ASR)- Electronic stability program (ESP)
- 16" x 7" 7-spoke alloy wheels- 2.6L SOHC SMPI 18-valve aluminum-alloy V6 engine
- 3-link independent front suspension w/coil springs & stabilizer bar
- 5-arm multi-link independent rear suspension w/coil springs & stabilizer bar
- All wheel drive- Front ventilated/rear disc brakes
- P205/55HR16 all-season performance tires- Pwr rack & pinion steering

U.S. 1 Auto Sales

U.S. 1 Auto Sales

View this car on our website at [us1autony.com/6709950](https://us1autony.com/6709950)

Website: [us1autony.com](https://us1autony.com)

Phone: [914-636-4439](tel:914-636-4439)

Map: [109 E Main St, New Rochelle, NY 10801](#)

