



## 2013 GMC Sierra 2500HD Denali

Texas Diesel Store 254-247-2172

**SALES PRICE \$34,999**

View this vehicle on our website at [texasdieselstore.com](http://texasdieselstore.com)

Texas Diesel Store.com

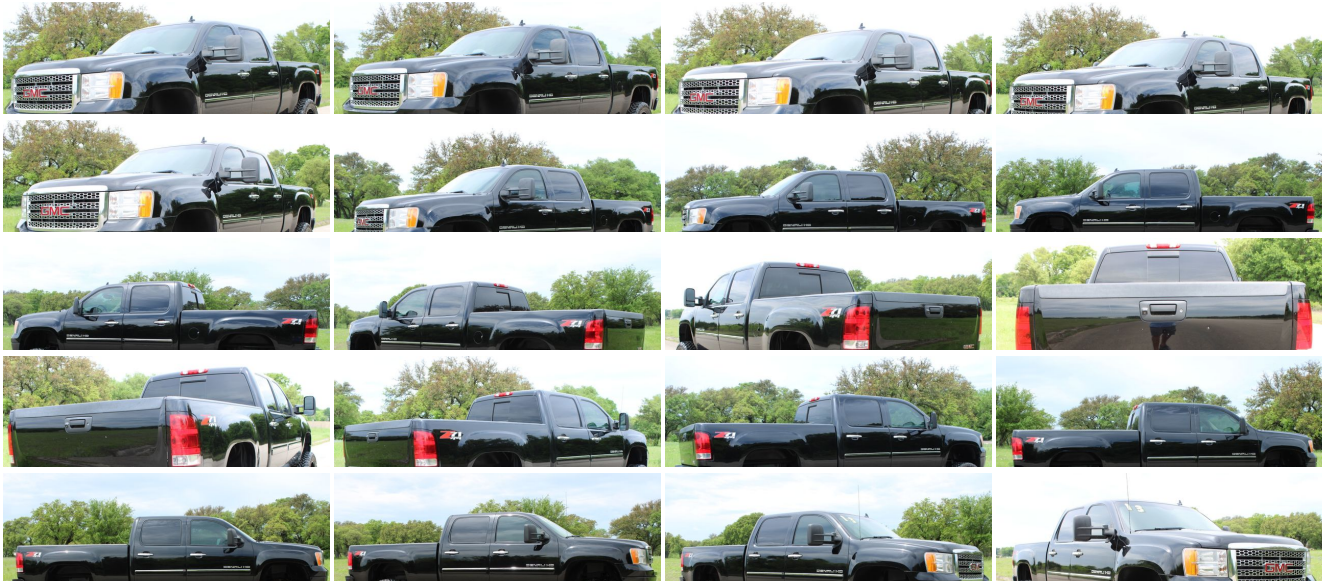
[254-247-2172](tel:254-247-2172)

5806 S General Bruce Dr , Temple, TX 76502

Photos

Details

Contact



## Specifications:

<b>Year:</b>	2013
<b>VIN:</b>	<a href="#">1GT125E83DF239880</a>
<b>Make:</b>	GMC
<b>Model/Trim:</b>	Sierra 2500HD Denali
<b>Condition:</b>	Pre-Owned
<b>Body:</b>	Pickup Truck
<b>Exterior:</b>	Onyx Black
<b>Engine:</b>	ENGINE, DURAMAX 6.6L TURBO DIESEL V8, B20-DIESEL COMPATIBLE
<b>Interior:</b>	Tan Leather
<b>Transmission:</b>	TRANSMISSION, ALLISON 1000 6-SPEED AUTOMATIC, ELECTRONICALLY CONTROLLED
<b>Mileage:</b>	119,980
<b>Drivetrain:</b>	4 Wheel Drive

## Vehicle Description

[www.TEXASDIESELSTORE.com](http://www.TEXASDIESELSTORE.com)

5806 S GENERAL BRUCE DR TEMPLE TX 76502

CALL OR TEXT TODAY @ 254-247-2172

2013 GMC SIERRA 2500HD DENALI Z71

6.6L LML DURAMAX TURBO DIESEL

AUTOMATIC TRANSMISSION

4 WHEEL DRIVE

ONLY 119K MILES!!

6" LIFT

20 INCH XD WHEELS

35" TOYO OPEN COUNTRY TIRES

B&W HITCH – FACTORY STEPS – ELECTRONIC 4X4

FACTORY TOUCH SCREEN NAVIGATION - LEATHER HEATED AND COOLED SEATS - DUAL POWER SEATS – BACK UP CAMERA -

HEATED STEERING WHEEL

SUNROOF

B&W GOOSENECK HITCH

CERTIFIED CLEAN CARFAX

SUPER CLEAN TRUCK!!

RECENTLY SERVICED & INSPECTED - READY TO HIT THE ROAD!!!

WE TAKE ANY CAR, TRUCK, SUVS FOR TRADE. CONTACT US WITH YOUR VEHICLE INFO FOR A FREE APPRAISAL! IN THE MARKET FOR A NEW VEHICLE? LET US BID YOUR TRADE!

FREE SHIPPING IN THE STATE OF TEXAS!!! WE ALSO OFFER PICK UP FROM THE AUSTIN/KILLEEN AIRPORT! FLY IN & DRIVE HOME WITH UP TO A \$500 REIMBURSEMENT IN AIRFARE FOR ON PERSON!

CALL OR TEXT TODAY @ 254-247-2172

2013 GMC SIERRA 2500HD DENALI Z71 with the powerful 6.6L LML DURAMAX turbo diesel and automatic ALLISON transmission! Only 119K miles! No leaks, drips, smoke or blow by! The 6 speed automatic transmission shifts through all of the gears with ease! 4x4 functions like it should! DENALI fully loaded with all TAN leather interior! Non smoker truck! Fixed console and both front seats are heated and cooled and power adjustable! Factory touch screen with navigation and dual climate control and sun roof! FULLY LOADED even has factory REAR DVD! This DENALI is fully LOADED!! The interior looks GREAT with no major wear or tear! The exterior of this truck is clean! The paint shines like new and turns heads everywhere it goes! LEVELED with factory 20 inch wheels and 35" TOYO OPEN COUNTRY tires! Absolutely beautiful truck and fully loaded! B&W GOOSENECK hitch already installed!! You do not want to miss out on this SUPER NICE truck! Recently gone through our service department and ready to roll!

We also offer extremely competitive Financing options or can work with your local bank/credit union. There is a free credit application on our website. We work hard to have the best financing options available with the most competitive rates. Click the link to fill out a Credit Application: <http://texasdieselstore.com/financing>

CONTACT US TODAY @ 254-247-2172

\*Shipping and reimbursements are subject to the completion of the transaction at our designated list price. Airfare reimbursements will be refunded at the completion of the deal as long as an airfare receipt is provided for our records.

\*diesel\* \*Dodge\* \*Ram\* \*2500\* \*3500\* \*4X4\* \*4wd\* \*6.7L\* \*6.7\* \*5.9\* \*5.9L\* \*Cummins\* \*Dodge\* \*Ram Pickup 2500\* \*Laramie\* \*SLT\* \*Truck\* \*Crew Cab Pickup\* \*Large\* \*Truck\* \*Diesel\* \*Quad Cab\* \*Ram Pickup 2500 Quad Cab\* \*Four Wheel Drive\* \*powerstroke\* \*duramax\* \*megacab\* \*mega cab\* \*6 speed\* \*6-speed\* \*6speed\* \*flatbed\* \*6.6\* \*6.6L\* \*ford\* \*gmc\* \*sierra\* \*dirtymax\* \*lariat\* \*king ranch\* \*sle\* \*denali\* \*laramie longhorn\* \*lifted\* \*jacked up\* \*deleted\* \*dually\* \*duelly\* \*SRW\* \*1 ton\* \*3/4 ton\* \*DRW\*\*450\* \*550\* \*4500\* \*5500\* \*z71\* \*turbo\* \*chevy\* \*silverado\* \*chevrolet\* \*short bed\* \*long bed\*

## Installed Options

### Interior

- Console, floor with CD carrier, storage bin, rear cup holders and rear powerpoints
- Door locks, power- Floor covering, color-keyed carpeting includes rear floor mats
- Floor mats, color-keyed carpeted first and second row, removable
- Mirror, inside rearview auto-dimming with rear camera display (Included and only available with (UVC) Rear Vision Camera when ordered with (UUN) or (UUJ) audio systems. Not included when (UYS) audio system with navigation, AM/FM stereo with CD player and MP3 playback.)
- Power outlets 2 auxiliary instrument panel-mounted with covers, 12-volt
- Remote vehicle starter system includes Remote Keyless Entry with 2 transmitters, panic button and content theft alarm (Remote Keyless Entry does not lock/unlock tailgate.)
- Seat adjuster, driver 12-way power- Seat adjuster, front passenger 12-way power
- Seat trim, Perforated Nuance Leather-Appointed
- Seats, front bucket includes 12-way power driver and front passenger seat adjusters, 2-way power lumbar control, heated seat cushions and seatbacks, 2-position driver memory, adjustable outboard head restraints, floor console, dual inboard armrests and storage pockets
- Seats, heated and cooled seat cushion and seat back for driver and front passenger with 4-way lumbar
- Air conditioning, dual-zone automatic climate control with individual climate settings for driver and right-front passenger
- Assist handles, front passenger and rear outboard
- Coat hooks, driver- and passenger-side rear
- Cruise control, electronic with set and resume speed - Cup holders, in console and rear
- Defogger, rear-window electric (Not available with (A48) power sliding rear window.)
- Driver Information Center with odometer, trip odometer and message center (monitors numerous systems depending on vehicle equipment level including low fuel, turn signal "on", transmission temperature and oil change notification)
- Headliner, Opal Gray-colored cloth with matching retainer moldings
- Instrumentation, analog with speedometer, odometer with trip odometer, fuel level, voltmeter, engine temperature, oil pressure and tachometer
- Lighting, interior with dome and reading lights, illuminated entry feature and blue backlit instrument panel switches
- Pedals, power-adjustable for accelerator and brake
- Rear Parking Assist, Ultrasonic with audible warning
- Seat, rear 60/40 folding bench (folds up), 3-passenger, folding (includes child seat top tether anchor)
- Steering column, Tilt-Wheel, adjustable with brake/transmission shift interlock, color-keyed
- Steering wheel controls mounted audio and Driver Information Center controls which provides access to enhanced Driver Information Center features and information
- Steering wheel, heated, leather-wrapped and color-keyed with theft-deterrent locking feature
- Universal Home Remote (Not included when (VYU) Snow Plow Prep Package is ordered.)
- Visors, driver and front passenger illuminated vanity mirrors padded with cloth trim, Opal-Gray-colored
- Warning tones headlamp on, key-in-ignition, driver and passenger buckle up reminder and turn signal on
- Windows, power with driver and front passenger Express-Down

### Exterior

- Mirrors, outside heated power-adjustable, power-folding and driver-side auto-dimming body color, with integrated turn signal indicators and curb-tilt
- Tires, LT265/70R18E all-season, blackwall (Includes (PYR) 18" (45.7 cm) forged polished aluminum wheels.)
- Wheels, 18" (45.7 cm) forged polished aluminum- Air dam, color-keyed
- Bumper, front body-color- Bumper, rear body-color, step-style with pad
- Door handles, chrome- Fog lamps, front, halogen
- Glass, Solar-Ray deep-tinted (all windows except light-tinted glass on windshield and driver-and front passenger-side glass)
- Grille, chrome surround with chrome center, Denali-exclusive
- Headlamps, dual halogen composite with automatic exterior lamp control and flash-to-pass feature
- LPO, Rear wheelhouse liner- Lamps, dual cargo area lamps

## Option Packages

### Factory Installed Packages

---

#### ENGINE, DURAMAX 6.6L TURBO DIESEL V8, B20-DIESEL COMPATIBLE

(397 hp [296.0 kW] @ 3000 rpm, 765 lb-ft of torque [1032.8 N-m] @ 1600 rpm) \$7,195

---

#### TRANSMISSION, ALLISON 1000 6-SPEED AUTOMATIC, ELECTRONICALLY CONTROLLED

with overdrive, electronic engine grade braking and tow/haul mode \$1,200

---

#### Option Packages Total

\$8,395

- Moldings, body-color bodyside with chrome insert
- Tailgate protection top of tailgate protection cap - Tailgate, EZ-Lift Tailgate, locking
- Tire carrier lock keyed cylinder lock that utilizes same key as ignition and door
- Tire carrier, lockable outside spare, winch-type mounted under frame at rear
- Wipers, front intermittent wet-arm with pulse washers

---

## Safety

- Console, floor with CD carrier, storage bin, rear cup holders and rear powerpoints
- Door locks, power- Floor covering, color-keyed carpeting includes rear floor mats
- Floor mats, color-keyed carpeted first and second row, removable
- Mirror, inside rearview auto-dimming with rear camera display (Included and only available with (UVC) Rear Vision Camera when ordered with (UUN) or (UUJ) audio systems. Not included when (UYS) audio system with navigation, AM/FM stereo with CD player and MP3 playback.)
- Power outlets 2 auxiliary instrument panel-mounted with covers, 12-volt
- Remote vehicle starter system includes Remote Keyless Entry with 2 transmitters, panic button and content theft alarm (Remote Keyless Entry does not lock/unlock tailgate.)
- Seat adjuster, driver 12-way power- Seat adjuster, front passenger 12-way power
- Seat trim, Perforated Nuance Leather-Appointed
- Seats, front bucket includes 12-way power driver and front passenger seat adjusters, 2-way power lumbar control, heated seat cushions and seatbacks, 2-position driver memory, adjustable outboard head restraints, floor console, dual inboard armrests and storage pockets
- Seats, heated and cooled seat cushion and seat back for driver and front passenger with 4-way lumbar
- Air conditioning, dual-zone automatic climate control with individual climate settings for driver and right-front passenger
- Assist handles, front passenger and rear outboard
- Coat hooks, driver- and passenger-side rear
- Cruise control, electronic with set and resume speed - Cup holders, in console and rear
- Defogger, rear-window electric (Not available with (A48) power sliding rear window.)
- Driver Information Center with odometer, trip odometer and message center (monitors numerous systems depending on vehicle equipment level including low fuel, turn signal "on", transmission temperature and oil change notification)
- Headliner, Opal Gray-colored cloth with matching retainer moldings
- Instrumentation, analog with speedometer, odometer with trip odometer, fuel level, voltmeter, engine temperature, oil pressure and tachometer
- Lighting, interior with dome and reading lights, illuminated entry feature and blue backlit instrument panel switches
- Pedals, power-adjustable for accelerator and brake
- Rear Parking Assist, Ultrasonic with audible warning
- Seat, rear 60/40 folding bench (folds up), 3-passenger, folding (includes child seat top tether anchor)
- Steering column, Tilt-Wheel, adjustable with brake/transmission shift interlock, color-keyed
- Steering wheel controls mounted audio and Driver Information Center controls which provides access to enhanced Driver Information Center features and information
- Steering wheel, heated, leather-wrapped and color-keyed with theft-deterrent locking feature
- Universal Home Remote (Not included when (VYU) Snow Plow Prep Package is ordered.)
- Visors, driver and front passenger illuminated vanity mirrors padded with cloth trim, Opal-Gray-colored
- Warning tones headlamp on, key-in-ignition, driver and passenger buckle up reminder and turn signal on
- Windows, power with driver and front passenger Express-Down

---

## Mechanical

- Engine, Vortec 6.0L Variable Valve Timing V8 SFI E85-compatible FlexFuel capable of running on unleaded or up to 85% ethanol (360 hp [268.4 kW] @ 5400 rpm, 380 lb-ft of torque [513.0 N-m] @ 4200 rpm)
- Transmission, 6-speed automatic, heavy-duty, electronically controlled with overdrive and tow/haul mode. Includes Cruise Grade Braking and Powertrain Grade Braking (Requires (L96) Vortec 6.0L V8 SFI engine.)
- Air cleaner, high-capacity- Alternator, 125 amps
- Battery, heavy-duty 600 cold-cranking amps, maintenance-free with rundown protection and retained accessory power
- Brakes, 4-wheel antilock, 4-wheel disc
- Cooling, auxiliary external transmission oil cooler heavy-duty air-to-oil
- Cooling, external engine oil cooler heavy-duty air-to-oil, integral to driver side of radiator tank
- Differential, heavy-duty automatic locking rear
- Exhaust aluminized stainless-steel muffler and tailpipe - Four wheel drive
- Frame, fully-boxed, hydroformed front section
- GVWR, 9500 lbs. (4309 kg) (Requires (L96) Vortec 6.0L V8 SFI engine.)
- Pickup box, Wideside- Rear axle, 3.73 ratio- Recovery hooks, front, Black

- Skid Plate Package includes front underbody shield starting behind front bumper and running to first cross-member, protecting front underbody, oil pan, differential case and transfer case, frame-mounted shields
- Steering, power
- Suspension Package, Handling/Trailer, heavy-duty includes 35mm twin tube shock absorbers and 36mm front stabilizer bar
- Suspension, front independent, torsion bar- Suspension, rear 4+1 multi-leaf springs
- Tools, mechanical jack and wheel wrench located in back of cab
- Trailer brake controller, integrated
- Trailing equipment, heavy-duty includes trailing hitch platform, 7-wire harness (harness includes wires for: park lamps, backup lamps, right turn, left turn, electric brake lead, battery and ground) with independent fused trailing circuits mated to a 7-way sealed connector and instrument panel jumper wiring harness for electric trailer brake controller
- Transfer case, electronic shift with rotary dial controls (Requires 4WD models)

All vehicles are sold As-Is, Where-Is unless otherwise noted. No warranties implied or expressed. Customer is responsible for inspecting the vehicle prior to purchase.

Texas Diesel Store.com

Texas Diesel Store.com

View this car on our website at [texasdieselstore.com/6708973](https://texasdieselstore.com/6708973)

Website: [texasdieselstore.com](https://texasdieselstore.com)

Phone: [254-247-2172](tel:254-247-2172)

Map: [5806 S General Bruce Dr, Temple, TX 76502](#)

