

2016 Chevrolet Silverado 2500HD Work Truck

View this car on our website at workvansandtrucks.com/6707615/ebrochure



Our Price **\$36,995**

Retail Value **\$38,995**

Specifications:

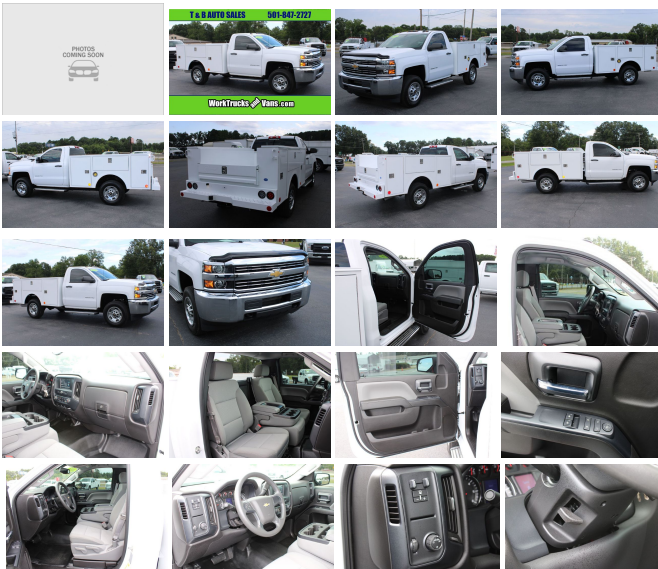
Year:	2016
VIN:	1GC0CUEG4GZ292004
Make:	Chevrolet
Stock:	U2300
Model/Trim:	Silverado 2500HD Work Truck
Condition:	Pre-Owned
Body:	Pickup Truck
Exterior:	WHITE
Engine:	ENGINE, VORTEC 6.0L VARIABLE VALVE TIMING V8 SFI, E85-COMPATIBLE, FLEXFUEL
Interior:	GRAY
Mileage:	10,354
Drivetrain:	Rear Wheel Drive

2016 CHEVROLET 2500 SILVERADO WT REG CAB 4X2 6.0 GAS ENGINE, AUTOMATIC TRANSMISSION, this work truck come with Power Windows, Power Door Locks, Power Mirrors, Trailer brake controller, Tilt Steering Wheel, Cruise Control, Tow Mode, am/fm/xm radio, Back-up Camera, Traction Control, Cloth Seats, Vinyl Seats, Chrome Grill, Chrome Bumpers, Rear Mounted Tow Hitch, Cab Marker Lights, Wide Running Boards.

Tire and Tread Depth Front left 10/32nds, Front right 10/32nds, Left Rear, 12/32nds Right Rear 12/32nds

New Warner Fliptop Service Bed comes with 8 Locking bins, Led Tail Lights.

Maximized Storage Organization •Removable panels between compartments allows storage of long objects •Divider trays and adjustable flat shelves provide customizable storage flexibility •Difficult to pry open flush-mounted, 16-gauge double-panel doors



Vehicle History Report : as Of 04/25/2024



Snapshot

2016 CHEVROLET SILVERADO 2500HD WORK TRUCK



No accidents or damage reported to CARFAX



9 Service history records



2 Previous owners



Personal vehicle



Last owned in Arkansas



69,937 Last reported odometer reading



FREE CARFAX Report

See the full CARFAX Report for additional information

*carfax Snapshot is a reflection of available information on the date the report was pulled. carfax is constantly being updated with new information and is subject to change at any time.

Our Location :



2016 Chevrolet Silverado 2500HD Work Truck

T & B Auto Sales - 501-847-2727 - View this car on our website at workvansandtrucks.com/6707615/ebrochure

Installed Options

Interior

- Seats, front 40/20/40 split-bench, 3-passenger, driver and front passenger recline with outboard head restraints and center fold-down armrest with storage. Vinyl has fixed lumbar and cloth has manually adjustable driver lumbar. (Upgradeable to (AZ3) front 40/20/40 split-bench seat.)
- Seat trim, Vinyl- Door locks, power- Steering column, manual Tilt-Wheel- Steering wheel
- Floor covering, Graphite-colored rubberized-vinyl
- Instrumentation, 6-gauge cluster featuring speedometer, fuel level, engine temperature, tachometer, voltage and oil pressure
- Driver Information Center, 3.5-inch diagonal monochromatic display provides warning messages and basic vehicle information
- Cruise control, steering wheel-mounted- Air conditioning, single-zone
- Assist handle, front passenger and driver on A-pillars

Exterior

- Tires, LT245/75R17E all-season, blackwall
- Wheels, 17" (43.2 cm) steel includes 17" x 7.5" (43.2 cm x 19.1 cm) steel spare wheel. Spare not included with (ZW9) pickup box delete unless a spare tire is ordered
- Tire carrier lock keyed cylinder lock that utilizes same key as ignition and door (Not included when (ZW9) pickup box delete or (9J4) rear bumper delete is ordered.)
- Bumper, front chrome- CornerStep, rear bumper (Requires (E63) pickup box.)
- Bumper, rear chrome with bumper CornerSteps (Requires (E63) pickup box.)
- Grille surround, chrome- Headlamps, halogen projector-beam
- Lamps, cargo area, cab mounted with switch on center switch bank
- Mirrors, outside manual, Black- Glass, solar absorbing, tinted- Door handles, Black
- Tailgate and bed rail protection caps, top
- Tailgate, locking, utilizes same key as ignition and door (Not available with (AQQ) Remote Keyless Entry.)

Safety

- Seats, front 40/20/40 split-bench, 3-passenger, driver and front passenger recline with outboard head restraints and center fold-down armrest with storage. Vinyl has fixed lumbar and cloth has manually adjustable driver lumbar. (Upgradeable to (AZ3) front 40/20/40 split-bench seat.)
- Seat trim, Vinyl- Door locks, power- Steering column, manual Tilt-Wheel- Steering wheel
- Floor covering, Graphite-colored rubberized-vinyl
- Instrumentation, 6-gauge cluster featuring speedometer, fuel level, engine temperature, tachometer, voltage and oil pressure
- Driver Information Center, 3.5-inch diagonal monochromatic display provides warning messages and basic vehicle information
- Cruise control, steering wheel-mounted- Air conditioning, single-zone
- Assist handle, front passenger and driver on A-pillars

Mechanical

- Transmission, 6-speed automatic, heavy-duty, electronically controlled with overdrive and tow/haul mode. Includes Cruise Grade Braking and Powertrain Grade Braking (Requires (L96) Vortec 6.0L V8 SFI engine or (LC8) 6.0L V8 SFI Gaseous engine.)
- Engine, Vortec 6.0L Variable Valve Timing V8 SFI, E85-compatible, FlexFuel capable of running on unleaded or up to 85% ethanol (360 hp [268.4 kW] @ 5400 rpm, 380 lb-ft of torque [515.0 N-m] @ 4200 rpm) (Does not include E85 capability with (ZW9) pickup box delete.)
- Rear axle, 4.10 ratio (Requires (L96) Vortec 6.0L V8 SFI engine or (LC8) 6.0L V8 SFI Gaseous CNG (Compressed Natural Gas) engine.)
- Suspension Package, Standard includes 51mm twin tube shock absorbers and 33mm front stabilizer bar
- Pickup box
- GVWR, 9300 lbs. (4218 kg) (Requires Regular Cab model, (L96) Vortec 6.0L V8 SFI engine or (LC8) 6.0L V8 SFI Gaseous engine and 2WD.)
- Air cleaner, high-capacity- Differential, heavy-duty locking rear- Rear wheel drive
- Cooling, external engine oil cooler- Cooling, auxiliary external transmission oil cooler
- Battery, heavy-duty 720 cold-cranking amps/80 Amp-hr, maintenance-free with rundown protection and retained accessory power
- Alternator, 150 amps- Frame, fully-boxed, hydroformed front section
- Recovery hooks, front, frame-mounted, black
- Steering, Recirculating Ball with smart flow power steering system
- Brakes, 4-wheel antilock, 4-wheel disc with DuraLife brake rotors
- Exhaust, aluminized stainless-steel muffler and tailpipe

Option Packages

Factory Installed Packages

ENGINE, VORTEC 6.0L VARIABLE VALVE TIMING V8 SFI, E85-COMPATIBLE, FLEXFUEL

capable of running on unleaded or up to 85% ethanol (360 hp [268.4 kW] @ 5400 rpm, 380 lb-ft of torque [515.0 N-m] @ 4200 rpm)



workvansandtrucks.com

501-847-2727

25637 I-30

Bryant, AR 72022

© 2024 AutoRevo - All rights reserved. - Powered by AutoRevo