

2007 Pontiac Solstice

Tony Arena 614-340-5683

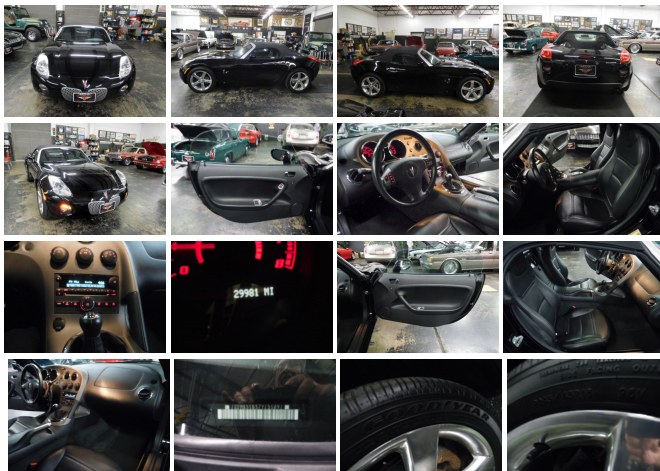
View this car on our website at arenamotor.com/6704668/ebrochure



Our Price **\$9,900**

Specifications:

Year:	2007
VIN:	1G2MB35B37Y135691
Make:	Pontiac
Stock:	U11712
Model/Trim:	Solstice
Condition:	Pre-Owned
Body:	Convertible
Exterior:	Mysterious (Black)
Engine:	ENGINE, ECOTEC 2.4L VARIABLE VALVE TIMING DOHC 4-CYLINDER SFI, ALUMINUM
Interior:	Ebony Leather
Transmission:	TRANSMISSION, 5-SPEED MANUAL
Mileage:	29,889
Drivetrain:	Rear Wheel Drive
Economy:	City 20 / Highway 26

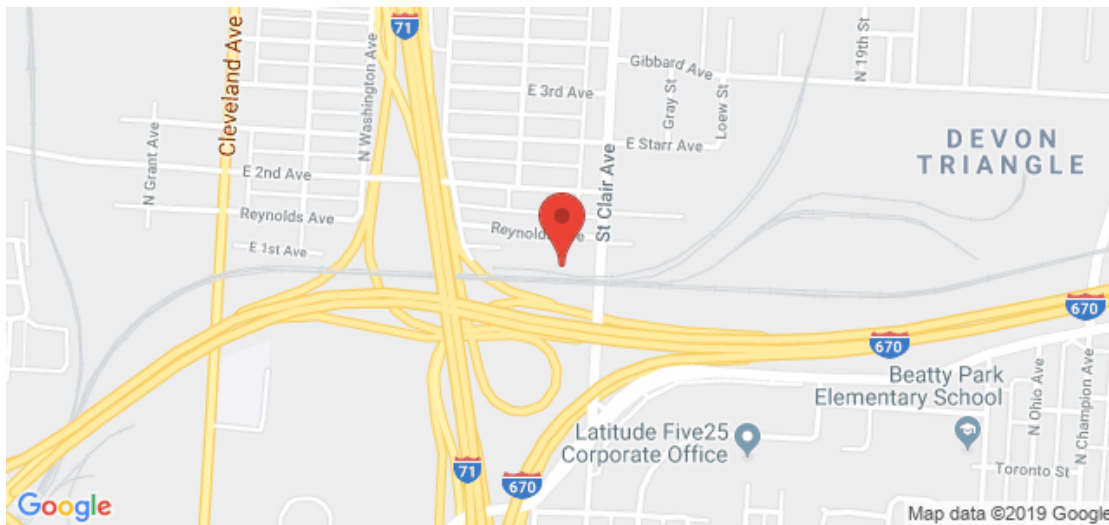


THIS IS A VERY NICE 2007 PONTIAC SOLSTICE..BODY IS GOOD PAINT IS GOOD. ALL BRIGHT WORK IS NICE...CONVERTIBLE TOP IS VERY GOOD...NO RIPS OR TEARS. THE BLACK ON BLACK IS SHARP...DON'T SEE MANY IN THIS COLOR... INTERIOR IS LIKE NEW...LEATHER SEATS ARE VERY GOOD....CARPETS, FLOOR MATS, DASH ALL LIKE NEW...IN 12 YEARS IT HAS ONLY BEEN DRIVEN 29000 MILES....THIS IS THE NON TURBO WITH A 5-SPEED....IT LOOKS GOOD, RUNS GOOD AND IS FUN TO DRIVE...IF YOU HAVE BEEN LOOKING FOR ONE THIS ONE IS NICE.....

2007 Pontiac Solstice

Arena Motor Sales, LLC - 614-340-5683 - View this car on our website at arenamotor.com/6704668/ebrochure

Our Location :



2007 Pontiac Solstice

Arena Motor Sales, LLC - 614-340-5683 - View this car on our website at arenamotor.com/6704668/ebrochure

Installed Options

Interior

- Antenna, fixed-mast- Audio system feature, 6-speaker system
- Audio system, AM/FM stereo with CD player, seek-and-scan and digital clock
- Cup holders, 1 on passenger-side of front center console and 2 in rear center console
- Defogger, rear-window electric- Door locks, manual
- Instrumentation, analog, backlit and chrome bezels with speedometer, fuel level and tachometer
- Lighting, trunk illumination- Mirror, inside rearview with dual reading lights
- Parking brake, center console-mounted
- Power outlet, instrument panel-mounted auxiliary with cover, 12-volt
- Seat adjuster, driver 2-way power height adjustment
- Seats, front bucket with manual fore/aft seat adjusters, reclining seatbacks, driver and passenger forward-folding, driver and passenger seatback pocket and fixed head restraints
- Steering column, rake-adjustable- Steering wheel, 3-spoke urethane
- Theft-deterrent system, vehicle, PASS-Key III+
- Trunk release, power, remote, located in glovebox
- Visors, driver and front passenger, padded, includes vanity mirror on driver-side
- Windows, manual

Exterior

- Convertible top, manual folding, cloth with glass rear window and integral rear defogger
- Daytime Running Lamps- Glass, Solar-Ray light-tinted
- Headlamps, halogen composite with automatic exterior lamp control and flash-to-pass feature
- Hood, front hinged with struts- Mirrors, outside manual, body-color
- Wipers, front intermittent wet-arm, variable

Safety

- Antenna, fixed-mast- Audio system feature, 6-speaker system

- Audio system, AM/FM stereo with CD player, seek-and-scan and digital clock
- Cup holders, 1 on passenger-side of front center console and 2 in rear center console
- Defogger, rear-window electric- Door locks, manual
- Instrumentation, analog, backlit and chrome bezels with speedometer, fuel level and tachometer
- Lighting, trunk illumination- Mirror, inside rearview with dual reading lights
- Parking brake, center console-mounted
- Power outlet, instrument panel-mounted auxiliary with cover, 12-volt
- Seat adjuster, driver 2-way power height adjustment
- Seats, front bucket with manual fore/aft seat adjusters, reclining seatbacks, driver and passenger forward-folding, driver and passenger seatback pocket and fixed head restraints
- Steering column, rake-adjustable- Steering wheel, 3-spoke urethane
- Theft-deterrent system, vehicle, PASS-Key III+
- Trunk release, power, remote, located in glovebox
- Visors, driver and front passenger, padded, includes vanity mirror on driver-side
- Windows, manual

Mechanical

- Battery, maintenance-free with rundown protection- Brakes, 4-wheel disc
- Drivetrain, rear-wheel drive
- Engine, ECOTEC 2.4L Variable Valve Timing DOHC 4-cylinder SFI, aluminum (177 hp [132.0 kW] @ 6600 rpm, 166 lb-ft of torque [224.1 N-m] @ 4800 rpm)
- Exhaust outlet, single high-polished stainless-steel- Exhaust, stainless-steel
- Rear axle, 3.91 ratio- Shock absorbers, Bilstein monotube front and rear
- Steering, power, rack-and-pinion- Suspension, 4-wheel independent
- Tire repair kit, includes inflator and tire sealant- Tires, P245/45R18 all-season, blackwall
- Transmission, 5-speed manual- Wheels, 18" (45.7 cm) silver-painted aluminum

Option Packages

Factory Installed Packages

ENGINE, ECOTEC 2.4L VARIABLE VALVE TIMING DOHC 4-CYLINDER SFI, ALUMINUM
 (177 hp [132.0 kW] @ 6600 rpm, 166 lb-ft of torque [224.1 N-m] @ 4800 rpm)

TRANSMISSION, 5-SPEED MANUAL

CRUISE CONTROL, ELECTRONIC WITH SET AND RESUME SPEED

FLOOR MATS, COLOR-KEYED AND CARPETED FRONT

\$60

FOG LAMPS, FRONT, HALOGEN

REMOTE KEYLESS ENTRY
 with 2 transmitters, panic button and content theft alarm

STEERING WHEEL ACCESSORY CONTROLS

mounted audio, Driver Information Center and cruise controls

STEERING WHEEL, 3-SPOKE LEATHER-WRAPPED URETHANE

AIR CONDITIONING, SINGLE-ZONE

MANUAL

\$960

-
AUDIO SYSTEM, AM/FM STEREO WITH
CD PLAYER
seek-and-scan and digital clock

-
LEATHER SEATING SURFACES

-
SEATS, FRONT BUCKET
with manual fore/aft seat
adjusters, reclining seatbacks,
driver and passenger forward-
folding, driver and passenger
seatback pocket and fixed
head restraints

-
WHEELS, 18" (45.7 CM) POLISHED
ALUMINUM
\$545

-
Option Packages Total
\$1,565

Arena Motor Sales, LLC

arenamotor.com

614-340-5683

867 Reynolds Ave

Columbus, Ohio 43201

© 2019 AutoRevo - All rights reserved. - Powered by AutoRevo