

# 2020 Jeep Gladiator Sport 4X4 DUPONT KEVLAR,LIFTED,BUMPER'S,LED'S

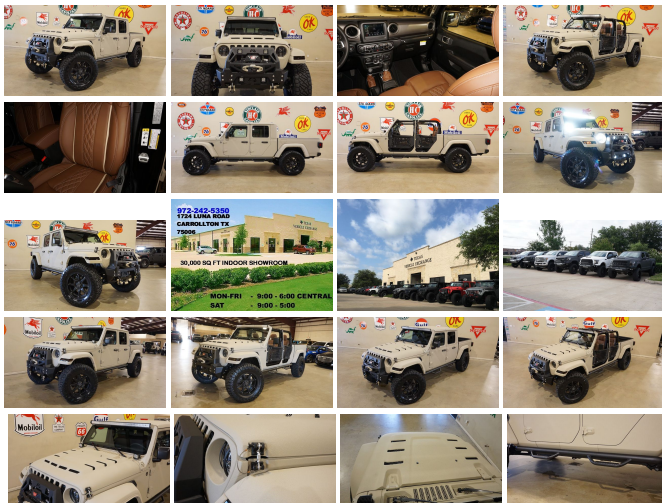
View this car on our website at [tveauto.com/6703137/ebrochure](http://tveauto.com/6703137/ebrochure)



Our Price **\$79,888**

## Specifications:

<b>Year:</b>	2020
<b>VIN:</b>	1C6JJTAG1LL141653
<b>Make:</b>	Jeep
<b>Stock:</b>	141653
<b>Model/Trim:</b>	Gladiator Sport 4X4 DUPONT KEVLAR,LIFTED,BUMPER'S,LED'S
<b>Condition:</b>	Pre-Owned
<b>Body:</b>	Pickup Truck
<b>Exterior:</b>	Tan
<b>Engine:</b>	ENGINE: 3.6L V6 24V VVT UPG I W/ESS
<b>Interior:</b>	Brown Leather
<b>Transmission:</b>	TRANSMISSION: 8-SPEED AUTOMATIC (850RE)
<b>Mileage:</b>	64
<b>Drivetrain:</b>	4 Wheel Drive
<b>Economy:</b>	City 16 / Highway 22



NATION WIDE FINANCING

SUBMIT CREDIT APP [WWW.TVEAUTO.COM](http://WWW.TVEAUTO.COM)

OR CALL 972-242-5350

**"GOBI TAN EDITION"**

CUSTOM BUILT **KEVLAR** 2020 JEEP  
GLADIATOR SPORT 4X4 WITH 24S  
PACKAGE

**UPGRADES INCLUDE:**

## UPGRADES INCLUDE:

- \* GOBI TAN KEVLAR COATING
- \* CUSTOM ALEA BROWN LEATHER WITH TAN STITCHING
- \* FACTORY REMOTE START
- \* CONVENIENCE GROUP
- \* COLD WEATHER GROUP
- \* MAX TOW PACKAGE
- \* FACTORY 7.0 INCH TOUCH SCREEN WITH AM/FM/SIRIUS STEREO
- \* FACTORY BACK-UP CAMERA
- \* U-CONNECT
  
- \* (4.10 AXLE RATIO)
- \* 4 BODY ARMOR TRAIL DOORS & RECON MIRRORS
- \* FAB FOURS "FULL METAL JACKET" STUBBY WINCH BUMPER WITH MODIFIER
- \* 4 RIGID INDUSTRIES LED D2 LIGHTS IN FRONT BUMPER
- \* FRONT D-RINGS & ISOLATORS (TAN)
  
- \* WARN ZEON 8-S WINCH WITH SYNTHETIC ROPE
- \* FACTORY 55 PROLINK (BLACK)
- \* EVOLUTION 2 LED HEADLIGHTS
- \* RUGGED RIDGE BLACK HEADLIGHT GUARDS
- \* NEW RK SPORT RAM AIR VENTED HOOD
- \* DRAKE OFF ROAD HOOD LATCHES
- \* PRO COMP 3.5" SUSPENSION LIFT KIT WITH TERAFLX FALCON SHOCKS
- \* TERAFLX FALCON STABILIZER KIT
- \* MOPAR AUXILIARY SWITCH BANK KIT
- \* 50" LED LIGHT BAR AND 2 RIGID INDUSTRIES D2 CO-DUALY SIDE GUOSTER

INDUSTRIES D-SS DUALY SIDE SHOOTER  
LED PILLAR LIGHTS

- \* N-FAB BLACK TUBULAR STEPS
- \* SPRAY IN BEDLINER
- \* DV8 OFF ROAD REAR BUMPER
- \* SUPERCHIPS FLASHCAL PROGRAMMER
- \* 20" BLACK RHINO "GLAMIS" WHEELS
- \* BRAND NEW NITTO RIDGE GRAPPLER  
37X13.50R/20 TIRES

WE BUILD EVERY JEEP WITH PRIDE! DO  
NOT HESITATE TO CALL US WITH THIS  
JEEP BUILD. WE CAN MAKE CHANGES TO  
THIS JEEP BUILD OR CUSTOM BUILD ANY  
JEEP TO YOUR PREFERENCE. GIVE US A  
CALL @ 972-242-5350 OR STOP BY FOR A  
TEST DRIVE. 1724 LUNA RD IN  
CARROLLTON - 2 MILES NORTH OF 635.

## Vehicle History Report : as Of 11/18/2019



### Snapshot

2020 JEEP GLADIATOR SPORT

	No accidents reported to CARFAX
	No damage reported to CARFAX
	2 Previous owners
	Well maintained vehicle
	Types of owners: Commercial, Personal
	64 Last reported odometer reading



**FREE CARFAX Report**

See the full CARFAX Report for additional information

\*carfax Snapshot is a reflection of available information on the date the report was pulled. carfax is constantly being updated with new information and is subject to change at any time.

## Our Location :



2020 Jeep Gladiator Sport 4X4 DUPONT KEVLAR,LIFTED,BUMPER'S,LED'S

Texas Vehicle Exchange - 972-242-5350 - View this car on our website at [tveauto.com/6703137/ebrochure](http://tveauto.com/6703137/ebrochure)

## Installed Options

### Interior

- 110 mph Vehicle Max Speed Calibration- 2 12V DC Power Outlets
- 2 Seatback Storage Pockets
- 4-Way Passenger Seat -inc: Manual Recline and Fore/Aft Movement
- 6-Way Driver Seat -inc: Manual Recline, Height Adjustment, Fore/Aft Movement and Manual Lumbar Support
- 60-40 Folding Split-Bench Front Facing Fold Forward Seatback Cloth Rear Seat
- Air Filtration- Analog Display- Cloth Low-Back Bucket Seats- Compass
- Cruise Control w/Steering Wheel Controls- Day-Night Rearview Mirror
- Delayed Accessory Power- Engine Immobilizer- Fade-To-Off Interior Lighting
- Front And Rear Map Lights- Front Center Armrest w/Storage
- Front Seats w/Cloth Back Material and Manual Driver Lumbar
- Full Carpet Floor Covering -inc: Carpet Front And Rear Floor Mats
- Full Floor Console w/Locking Storage and 2 12V DC Power Outlets
- Gauges -inc: Speedometer, Odometer, Engine Coolant Temp, Tachometer, Engine Hour Meter, Trip Odometer and Trip Computer
- HVAC -inc: Console Ducts- Illuminated Front Cupholder- Illuminated Rear Cupholder
- Instrument Panel Bin, Dashboard Storage, Driver / Passenger And Rear Door Bins
- Interior Trim -inc: Metal-Look Instrument Panel Insert and Metal-Look Console Insert
- Locking Glove Box
- Manual Adjustable Front Head Restraints and Foldable Rear Head Restraints
- Manual Air Conditioning- Manual Tilt/Telescoping Steering Column
- Outside Temp Gauge- Proximity Key For Push Button Start Only
- Redundant Digital Speedometer- Systems Monitor- Trip Computer
- Urethane Gear Shift Knob- Vanity w/Driver And Passenger Auxiliary Mirror

### Exterior

- Aero-Composite Halogen Headlamps w/Delay-Off- Black Door Handles
- Black Fender Flares- Black Front Bumper w/2 Tow Hooks

- Black Fender Flares- Black Front Bumper w/2 Tow Hooks
- Black Rear Bumper w/1 Tow Hook- Black Side Windows Trim- Body-Colored Grille
- Bridgestone Brand Tires- Clearcoat Paint- Deep Tint Sunscreen Windows
- Front Fog Lamps- Full-Size Spare Tire Stored Underbody w/Crankdown
- Galvanized Steel/Aluminum Panels- Manual Convertible Top w/Fixed Roll-Over Protection
- Regular Box Style- Removable Rear Window- Steel Spare Wheel
- Tailgate Rear Cargo Access- Tires: 245/75R17 H/T- Variable Intermittent Wipers
- Wheels: 17" x 7.5" Tech Silver Aluminum

## Safety

- 110 mph Vehicle Max Speed Calibration- 2 12V DC Power Outlets
- 2 Seatback Storage Pockets
- 4-Way Passenger Seat -inc: Manual Recline and Fore/Aft Movement
- 6-Way Driver Seat -inc: Manual Recline, Height Adjustment, Fore/Aft Movement and Manual Lumbar Support
- 60-40 Folding Split-Bench Front Facing Fold Forward Seatback Cloth Rear Seat
- Air Filtration- Analog Display- Cloth Low-Back Bucket Seats- Compass
- Cruise Control w/Steering Wheel Controls- Day-Night Rearview Mirror
- Delayed Accessory Power- Engine Immobilizer- Fade-To-Off Interior Lighting
- Front And Rear Map Lights- Front Center Armrest w/Storage
- Front Seats w/Cloth Back Material and Manual Driver Lumbar
- Full Carpet Floor Covering -inc: Carpet Front And Rear Floor Mats
- Full Floor Console w/Locking Storage and 2 12V DC Power Outlets
- Gauges -inc: Speedometer, Odometer, Engine Coolant Temp, Tachometer, Engine Hour Meter, Trip Odometer and Trip Computer
- HVAC -inc: Console Ducts- Illuminated Front Cupholder- Illuminated Rear Cupholder
- Instrument Panel Bin, Dashboard Storage, Driver / Passenger And Rear Door Bins
- Interior Trim -inc: Metal-Look Instrument Panel Insert and Metal-Look Console Insert
- Locking Glove Box
- Manual Adjustable Front Head Restraints and Foldable Rear Head Restraints
- Manual Air Conditioning- Manual Tilt/Telescoping Steering Column
- Outside Temp Gauge- Proximity Key For Push Button Start Only
- Redundant Digital Speedometer- Systems Monitor- Trip Computer
- Urethane Gear Shift Knob- Vanity w/Driver And Passenger Auxiliary Mirror

## Mechanical

- 1600lbs. Maximum Payload- 180 Amp Alternator- 22 Gal. Fuel Tank- 3 Skid Plates
- 3.73 Rear Axle Ratio- 50 State Emissions
- 650CCA Maintenance-Free Battery w/Run Down Protection
- Anti-Lock 4-Wheel Disc Heavy Duty Brakes- Auto Locking Hubs
- Brake Actuated Limited Slip Differential
- Brakes w/Front And Rear Vented Discs, Brake Assist and Hill Hold Control
- Class II Towing Equipment -inc: Hitch and Trailer Sway Control
- Electro-Hydraulic Power Assist Steering- Engine Auto Stop-Start Feature
- Engine Oil Cooler- Engine: 3.6L V6 24V VVT UPG I w/ESS
- Front And Rear Anti-Roll Bars- GVWR: TBA- HD Shock Absorbers
- Leading Link Front Suspension w/Coil Springs- Manual Transfer Case
- Normal Duty Plus Suspension- Part-Time Four-Wheel Drive
- Single Stainless Steel Exhaust- Trailer Wiring Harness
- Trailing Arm Rear Suspension w/Coil Springs- Transmission: 6-Speed Manual

## Option Packages

### Factory Installed Packages

ENGINE: 3.6L V6 24V VVT UPG I W/ESS

TRANSMISSION: 8-SPEED AUTOMATIC (850RE)

-inc: Tip Start, Transmission Skid Plate, Selec-Speed Control \$2,000

AUXILIARY SWITCH GROUP

-inc: 700 Amp Maintenance Free Battery, 240 Amp Alternator, Auxiliary Switches \$295

<b>BLACK 3-PIECE HARD TOP</b>	
-inc: Freedom Panel Storage Bag, Rear Window Defroster, Rear Sliding Window, No Soft Top	<b>\$1,195</b>
-	
<b>COLD WEATHER GROUP</b>	
-inc: Heated Steering Wheel, Heated Front Seats	<b>\$995</b>
-	
<b>CONVENIENCE GROUP</b>	
-inc: Universal Garage Door Opener	<b>\$595</b>
-	
<b>MAX TOW PACKAGE W/4.10 AXLE RATIO</b>	
-inc: Dana M210 Wide Front Axle, Heavy Duty Engine Cooling, Tires: 245/75R17 BSW A/T Dueler, GVWR: 6,250 lbs, 240 Amp Alternator, Molded-In- Color Fender Flares (2-Piece), Daytime Running Lamp System, Dana M220 Wide Rear Axle, Trailer Hitch Zoom, Class IV Hitch Receiver, 4.10 Rear Axle Ratio	<b>\$1,095</b>
-	
<b>TECHNOLOGY GROUP</b>	
-inc: Google Android Auto, SiriusXM Satellite Radio, 1- Year SiriusXM Radio Service, For More Info, Call 800-643- 2112, GPS Antenna Input, USB Host Flip, Cluster 7.0" TFT Color Display, Integrated Center Stack Radio, 7.0" Touch Screen Display, Air Conditioning w/Auto Temp Control, Radio: Uconnect 4 w/7" Display, Apple CarPlay	<b>\$995</b>
-	
<b>QUICK ORDER PACKAGE 24S</b>	
-inc: Engine: 3.6L V6 24V VVT UPG I w/ESS, Transmission: 8- Speed Automatic (850RE), Speed Sensitive Power Locks, Automatic Headlamps, Leather Wrapped Steering Wheel, Front 1-Touch Down Power Windows, Power Heated Mirrors, Security Alarm, Power Tailgate Lock, Remote Keyless Entry, Sun Visors w/Illuminated Vanity Mirrors	<b>\$3,200</b>
-	
Option Packages Total	<b>\$10,370</b>

Texas Vehicle Exchange

[tveauto.com](http://tveauto.com)

972-242-5350

1724 Luna Road

Carrollton, TX 75006

© 2019 AutoRevo - All rights reserved. - Powered by AutoRevo