

parksdeals.com
833-825-2763
615 NC-66 South
Kernersville, NC
27284

Parks Chevrolet,
Inc.

2020 Chevrolet Tahoe LT

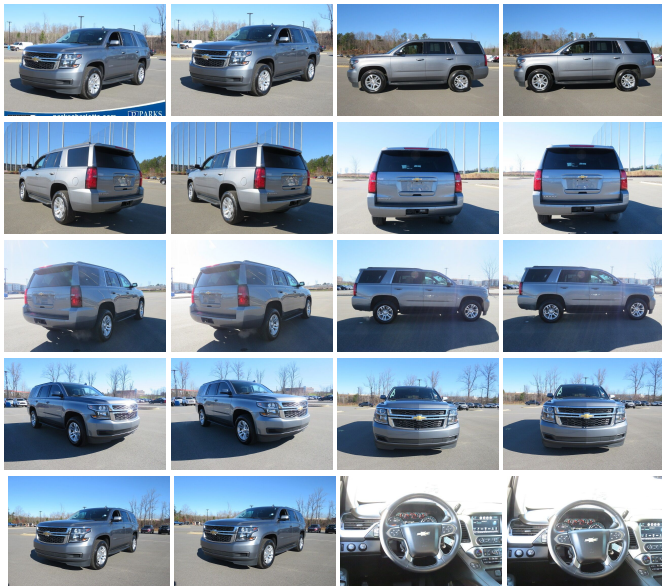
View this car on our website at parksdeals.com/6701187/ebrochure



Our Price **\$55,539**

Specifications:

- Year:** 2020
- VIN:** 1GNSKBKC2LR170793
- Make:** Chevrolet
- Stock:** 161227XA
- Model/Trim:** Tahoe LT
- Condition:** Pre-Owned
- Body:** SUV
- Exterior:** Steel Metallic
- Engine:** ENGINE, 5.3L ECOTEC3 V8 WITH ACTIVE FUEL MANAGEMENT, DIRECT INJECTION AND VARIABLE VALVE TIMING
- Interior:** Black Leather
- Mileage:** 21,539
- Drivetrain:** 4 Wheel Drive
- Economy:** City 15 / Highway 21



2020 Chevrolet Tahoe LT Certified.

GM CERTIFIED WARRANTY!!

4WD, Black Leather, 1st & 2nd Row Color-Keyed Carpeted Floor Mats, 2nd Row 60/40 Split-Folding Manual Bench, 3rd Row Manual 60/40 Split-Folding Fold Flat Bench, 4-Wheel Antilock Disc Brakes w/Brake Assist, 5 12-Volt Auxiliary Power Outlets, 9 Speakers, Auto-Dimming Inside Rear-View Mirror, Automatic Emergency Braking, Black Assist Steps, Bose Premium 9-Speaker System, Cargo Net, Color-Keyed Carpeting Floor Covering, Driver Inboard & Front Passenger Airbags, Electronic Cruise Control w/Set & Resume Speed, Enhanced Driver Alert Package (Y86), Extended-Range Remote Keyless Entry, Exterior Parking Camera Rear, Floor Console, Forward Collision Alert, Front Heated Reclining Bucket Seats, Front Passenger 6-Way Power Seat Adjuster, Heated front seats, IntelliBeam Headlamps, Lane Keep Assist w/Lane Departure Warning, Leather-Appointed Seat Trim, Leather-Wrapped Steering Wheel, Memory Settings, Power Liftgate, Power-Adjustable Accelerator & Brake Pedals, Preferred Equipment Group 1LT, Premium audio system: Chevrolet MyLink, Premium Smooth Ride Suspension Package, Rain sensing wipers, Rear Park Assist w/Audible Warning, Remote Vehicle Start, Roof-Mounted Luggage Rack Side Rails, SiriusXM Radio, Universal Home Remote. Clean CARFAX.

Odometer is 27832 miles below market average!

Call 704.288.0662 to check on the availability of this vehicle and schedule a private showing or shop 24 hours a day @ WWW.PARKSCHARLOTTE.COM. *All prices are plus tax, tag, title, and documentation. All vehicles are fully reconditioned by a Master ASE Factory Trained Certified Technician.

Awards:
* ALG Residual Value

Vehicle History Report : as Of 04/17/2024

CARFAX

Snapshot

2020 CHEVROLET TAHOE LT



No accidents or damage reported to CARFAX



8 Service history records



3 Previous owners



Personal vehicle



Last owned in North Carolina



31,589 Last reported odometer reading



FREE CARFAX Report

See the full CARFAX Report for additional information

*carfax Snapshot is a reflection of available information on the date the report was pulled. carfax is constantly being updated with new information and is subject to change at any time.

Our Location :



2020 Chevrolet Tahoe LT

Parks Chevrolet, Inc. - 833-825-2763 - View this car on our website at parksdeals.com/6701187/ebrochure

Installed Options

Interior

- Seats, front bucket with leather-appointed seating heated seat cushions and seat backs, 10-way power driver and passenger seat includes 6-way power cushions, driver seat 2-position memory, 2-way power lumbar control and power recline
- Seat trim, leather-appointed front seats- Seat adjuster, front passenger 6-way power
- Memory settings recalls presets for driver power seat adjuster and pedals (When (PCK) Luxury Package or (PDA) Texas Edition Package are ordered, also includes memory presets for outside rearview mirrors and power steering column.)
- Seats, second row 60/40 split-folding bench, manual
- Console, floor with storage area, cup holders and auxiliary jack
- Floor mats, color-keyed carpeted first and second row, removable (Deleted when (Z71) Off-Road Package or (WJP) Z71 Midnight Edition are ordered.)
- Steering column, manual tilt and telescopic- Steering wheel, leather-wrapped
- Steering wheel controls, mounted audio and cruise controls includes Driver Information Center controls
- Door locks, power programmable with lockout protection and delayed locking
- Remote Keyless Entry, extended-range (Not included when (PCK) Luxury Package or (PDA) Texas Edition Package are ordered.)
- Cruise control, electronic with set and resume speed
- Seat, third row manual 60/40 split-folding bench, fold flat (Not included when (PCK) Luxury Package or (PDA) Texas Edition Package are ordered.)

Option Packages

Factory Installed Packages

ENGINE, 5.3L ECOTEC3 V8 WITH ACTIVE FUEL MANAGEMENT, DIRECT INJECTION AND VARIABLE VALVE TIMING

includes aluminum block construction (355 hp [265 kW] @ 5600 rpm, 383 lb-ft of torque [518 N-m] @ 4100 rpm)

- Floor covering, color-keyed carpeting- Driver Information Center, 4.2" diagonal multi-color
- Warning tones headlamp on, key-in-ignition, driver and right-front passenger seat belt unfasten and turn signal on
- Remote vehicle start
- Windows, power with Express-Down and Express-Up on front doors and lock out features
- Universal Home Remote includes garage door opener, programmable
- Pedals, power-adjustable for accelerator and brake
- Climate control, tri-zone automatic with individual climate settings for driver, right-front passenger and rear passengers
- Defogger, rear-window electric- Power outlet, 110-volt
- Power outlets, 5 auxiliary, 12-volt includes outlets in the instrument panel, console, back of console, 1 in 3rd row and 1 in cargo area
- Mirror, inside rearview auto-dimming
- Conversation mirror (Deleted when (UTT) Theft Protection Package is ordered.)
- Assist handles, 1st row passenger and 2nd row outboard seats
- Lighting, interior with dome light, driver- and passenger-side door switch with delayed entry feature, cargo lights, door handle or Remote Keyless Entry-activated illuminated entry and map lights in front and second seat positions.
- Cargo management system- Cargo net
- Chevrolet Connected Access capable (Subject to terms. See onstar.com or dealer for details.)

Exterior

- Wheels, 18" x 8.5" (45.7 cm x 21.6 cm) aluminum with high-polished finish
- Tires, P265/65R18 all-season, blackwall
- Assist steps, Black (Premier includes chrome accent strip) (Deleted when (RVQ) Assist step kit, Black, LPO or (VXH) Assist step kit, Chrome, LPO are ordered.)
- Mirrors, outside heated power-adjustable, manual-folding and color keyed driver mirror includes spotter mirror
- Liftgate, power- Tire, spare P265/70R17 all-season, blackwall
- Wheel, 17" x 8" (43.2 cm x 20.3 cm) full-size, steel spare
- Tire carrier, lockable outside spare, winch-type mounted under frame at rear
- Active aero shutters, front- Fascia, front body-color
- Fascia, rear body-color ((PCK) Luxury Package and (PDA) Texas Edition Package includes trailer hitch close out.)
- Luggage rack side rails, roof-mounted- IntelliBeam, automatic high beam on/off
- Glass, acoustic, laminated- Glass, deep-tinted- Wipers, front intermittent, Rainsense
- Wiper, rear intermittent with washer

Safety

- Seats, front bucket with leather-appointed seating heated seat cushions and seat backs, 10-way power driver and passenger seat includes 6-way power cushions, driver seat 2-position memory, 2-way power lumbar control and power recline
- Seat trim, leather-appointed front seats- Seat adjuster, front passenger 6-way power
- Memory settings recalls presets for driver power seat adjuster and pedals (When (PCK) Luxury Package or (PDA) Texas Edition Package are ordered, also includes memory presets for outside rearview mirrors and power steering column.)
- Seats, second row 60/40 split-folding bench, manual
- Console, floor with storage area, cup holders and auxiliary jack
- Floor mats, color-keyed carpeted first and second row, removable (Deleted when (Z71) Off-Road Package or (WJP) Z71 Midnight Edition are ordered.)
- Steering column, manual tilt and telescopic- Steering wheel, leather-wrapped
- Steering wheel controls, mounted audio and cruise controls includes Driver Information Center controls
- Door locks, power programmable with lockout protection and delayed locking
- Remote Keyless Entry, extended-range (Not included when (PCK) Luxury Package or (PDA) Texas Edition Package are ordered.)
- Cruise control, electronic with set and resume speed
- Seat, third row manual 60/40 split-folding bench, fold flat (Not included when (PCK) Luxury Package or (PDA) Texas Edition Package are ordered.)
- Floor covering, color-keyed carpeting- Driver Information Center, 4.2" diagonal multi-color
- Warning tones headlamp on, key-in-ignition, driver and right-front passenger seat belt unfasten and turn signal on
- Remote vehicle start
- Windows, power with Express-Down and Express-Up on front doors and lock out features
- Universal Home Remote includes garage door opener, programmable
- Pedals, power-adjustable for accelerator and brake
- Climate control, tri-zone automatic with individual climate settings for driver, right-front passenger and rear passengers
- Defogger, rear-window electric- Power outlet, 110-volt
- Power outlets, 5 auxiliary, 12-volt includes outlets in the instrument panel, console, back of console, 1 in 3rd row and 1 in cargo area
- Mirror, inside rearview auto-dimming
- Conversation mirror (Deleted when (UTT) Theft Protection Package is ordered.)
- Assist handles, 1st row passenger and 2nd row outboard seats

- Lighting, interior with dome light, driver- and passenger-side door switch with delayed entry feature, cargo lights, door handle or Remote Keyless Entry-activated illuminated entry and map lights in front and second seat positions.
- Cargo management system- Cargo net
- Chevrolet Connected Access capable (Subject to terms. See onstar.com or dealer for details.)

Mechanical

- Transmission, 6-speed automatic, electronically controlled with overdrive and tow/haul mode
- Engine, 5.3L EcoTec3 V8 with Active Fuel Management, Direct Injection and Variable Valve Timing includes aluminum block construction (355 hp [265 kW] @ 5600 rpm, 383 lb-ft of torque [518 N-m] @ 4100 rpm)
- Rear axle, 3.08 ratio (Not available with (NHT) Max Trailering Package.)
- Suspension Package, Premium Smooth Ride (Not available with (NHT) Max Trailering Package.)
- GVWR, 7300 lbs. (3311 kg) (Requires 4WD model.)
- E85 FlexFuel capable (Included and only available with Fleet or Government order types.)
- Transfer case, active, single-speed, electronic Autotrac with rotary controls, does not include neutral. Cannot be dinghy towed (Requires 4WD model. Not available with (NHT) Max Trailering Package.)
- Differential, heavy-duty locking rear- 4-wheel drive
- Cooling, external engine oil cooler, heavy-duty air-to-oil integral to driver side of radiator
- Cooling, auxiliary transmission oil cooler, heavy-duty air-to-oil
- Battery, 720 cold-cranking amps with 80 amp hour rating - Alternator, 150 amps
- Trailering equipment includes trailering hitch platform, 7-wire harness with independent fused trailering circuits mated to a 7-way sealed connector and 2" trailering receiver
- Trailer sway control- Suspension, front coil-over-shock with stabilizer bar
- Suspension, rear multi-link with coil springs- Steering, power, electric- Hill Start Assist

Parks Chevrolet, Inc.

parksdeals.com

833-825-2763

615 NC-66 South

Kernersville, NC 27284

© 2024 AutoRevo - All rights reserved. - Powered by AutoRevo