

**BLUETOOTH, REAR VIEW CAMERA, ADAPTIVE CRUISE**



## 2018 Ford Explorer XLT

**Our Price \$24,498**

View this vehicle on our website at [texaschevytrucks.com](http://texaschevytrucks.com)

Winningham Chevrolet

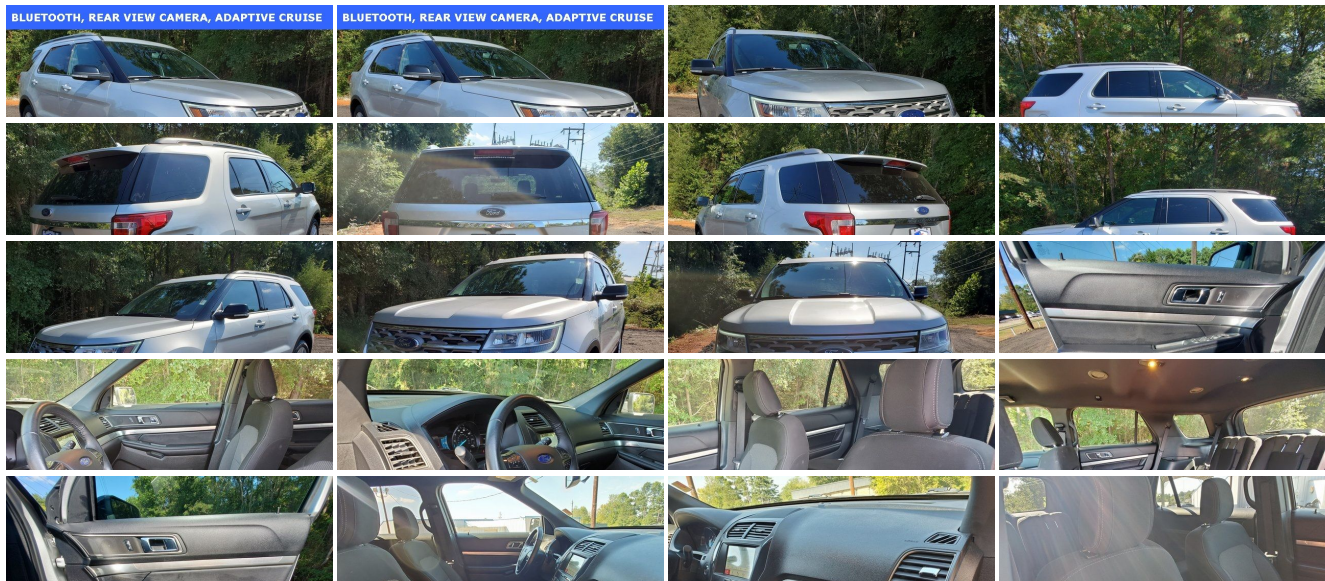
[9038432561](tel:9038432561)

701 S Wood St (US 271), Gilmer, TX 75644

Photos

Details

Contact



Specifications:

Year:	2018
VIN:	1FM5K8D81JGA36492
Make:	Ford
Stock:	P1012
Model/Trim:	Explorer XLT
Condition:	Pre-Owned
Body:	SUV
Exterior:	White Platinum Metallic Tri-Coat
Engine:	ENGINE: 3.5L TI-VCT V6
Interior:	Medium Stone/Medium Light Stone Cloth
Mileage:	46,854
Drivetrain:	4 Wheel Drive
Economy:	City 16 / Highway 22

Vehicle Description

Clean CARFAX. CARFAX One-Owner. \*\*ADAPTIVE CRUISE\*\*, \*\*TEEN SAFE\*\*, \*\*REAR VIEW CAMERA\*\*, \*\*BLUETOOTH HANDS FREE CALLING\*\*, \*\*MP3 / IPOD COMPATIBLE\*\*, \*\*TOWING PACKAGE\*\*, AWD, Heated door mirrors, Leather steering wheel, Power driver seat, Power windows. Ingot Silver Metallic 2018 Ford Explorer XLT AWD 6-Speed Automatic with Select-Shift 3.5L 6-Cylinder SMPI DOHC

Installed Options	Option Packages
<div>Interior</div> <div><ul style="list-style-type: none"><li>- 60-40 Folding Split-Bench Front Facing Manual Reclining Tumble Forward Premium Cloth Rear Seat w/Manual Fore/Aft</li><li>- Gauges -inc: Speedometer, Odometer, Engine Coolant Temp, Tachometer, Trip Odometer and Trip Computer</li><li>- Power Rear Windows and Fixed 3rd Row Windows</li><li>- Remote Keyless Entry w/Integrated Key Transmitter, Illuminated Entry, Illuminated Ignition Switch and Panic Button</li><li>- Proximity Key For Doors And Push Button Start</li><li>- Cruise Control w/Steering Wheel Controls- Manual Air Conditioning</li><li>- Rear HVAC w/Separate Controls</li><li>- Unique Cloth Bucket Seats -inc: 10-way power driver's seat w/power lumbar and recline, 6-way power front passenger seat w/manual recline and 4-way manually adjustable driver and front passenger head restraints (2-way up/down when dual-headrest DVD entertainment system (50S) is ordered)</li><li>- Full Carpet Floor Covering -inc: Carpet Front And Rear Floor Mats</li><li>- FOB Controls -inc: Trunk/Hatch/Tailgate</li><li>- Power 1st Row Windows w/Driver And Passenger 1-Touch Up/Down</li><li>- Power Door Locks w/Autolock Feature- Trip Computer- Driver Seat- Passenger Seat</li><li>- Manual Tilt/Telescoping Steering Column</li><li>- Fixed 50-50 Split-Bench Premium Cloth 3rd Row Seat Front, Manual Fold Into Floor and 2 Fixed Head Restraints</li><li>- Leather Steering Wheel- Front Cupholder- Rear Cupholder- Compass- Keypad</li><li>- Valet Function</li><li>- HVAC -inc: Underseat Ducts, Auxiliary Rear Heater and Headliner/Pillar Ducts</li><li>- Illuminated Locking Glove Box- Driver Foot Rest</li><li>- Interior Trim -inc: Metal-Look Instrument Panel Insert, Metal-Look Door Panel Insert, Metal-Look Console Insert and Chrome/Metal-Look Interior Accents</li><li>- Full Cloth Headliner- Cloth Door Trim Insert- Leather/Chrome Gear Shift Knob</li><li>- Day-Night Rearview Mirror</li><li>- Driver And Passenger Visor Vanity Mirrors w/Driver And Passenger Illumination</li><li>- Full Floor Console w/Covered Storage, Mini Overhead Console w/Storage and 4 12V DC Power Outlets</li><li>- Front And Rear Map Lights- Fade-To-Off Interior Lighting- Carpet Floor Trim</li><li>- Cargo Area Concealed Storage- Cargo Space Lights</li><li>- Driver / Passenger And Rear Door Bins- Delayed Accessory Power- Systems Monitor</li><li>- Outside Temp Gauge- Analog Display- Manual Adjustable Rear Head Restraints</li><li>- Front Center Armrest and Rear Center Armrest- 2 Seatback Storage Pockets</li><li>- Seats w/Premium Cloth Back Material</li><li>- Securilock Anti-Theft Ignition (pats) Engine Immobilizer- Perimeter Alarm</li></ul></div>	<div>Factory Installed Packages</div> <div>ENGINE: 3.5L TI-VCT V6</div>

- 4 12V DC Power Outlets- Air Filtration

---

## Exterior

- Wheels: 18" 5-Split-Spoke Sparkle Silver-Painted -inc: Aluminum
- Black Power Heated Side Mirrors w/Convex Spotter and Manual Folding
- Speed Sensitive Variable Intermittent Wipers
- Tailgate/Rear Door Lock Included w/Power Door Locks
- Fully Automatic Aero-Composite Led Low Beam Daytime Running Lights Preference Setting Headlamps w/Delay-Off
- Tires: P245/60R18 AS BSW- Steel Spare Wheel
- Compact Spare Tire Mounted Inside Under Cargo- Clearcoat Paint
- Body-Colored Front Bumper w/Black Rub Strip/Fascia Accent and Metal-Look Bumper Insert
- Body-Colored Rear Step Bumper w/Black Rub Strip/Fascia Accent and Metal-Look Bumper Insert
- Black Side Windows Trim and Black Front Windshield Trim
- Chrome Bodyside Insert, Black Bodyside Cladding and Black Wheel Well Trim
- Body-Colored Door Handles
- Fixed Rear Window w/Fixed Interval Wiper, Heated Wiper Park and Defroster
- Deep Tinted Glass- Galvanized Steel/Aluminum Panels- Lip Spoiler- Chrome Grille
- Liftgate Rear Cargo Access- Roof Rack Rails Only- LED Brakelights- Laminated Glass

---

## Safety

- 60-40 Folding Split-Bench Front Facing Manual Reclining Tumble Forward Premium Cloth Rear Seat w/Manual Fore/Aft
- Gauges -inc: Speedometer, Odometer, Engine Coolant Temp, Tachometer, Trip Odometer and Trip Computer
- Power Rear Windows and Fixed 3rd Row Windows
- Remote Keyless Entry w/Integrated Key Transmitter, Illuminated Entry, Illuminated Ignition Switch and Panic Button
- Proximity Key For Doors And Push Button Start
- Cruise Control w/Steering Wheel Controls- Manual Air Conditioning
- Rear HVAC w/Separate Controls
- Unique Cloth Bucket Seats -inc: 10-way power driver's seat w/power lumbar and recline, 6-way power front passenger seat w/manual recline and 4-way manually adjustable driver and front passenger head restraints (2-way up/down when dual-headrest DVD entertainment system (50S) is ordered)
- Full Carpet Floor Covering -inc: Carpet Front And Rear Floor Mats
- FOB Controls -inc: Trunk/Hatch/Tailgate
- Power 1st Row Windows w/Driver And Passenger 1-Touch Up/Down
- Power Door Locks w/Autolock Feature- Trip Computer- Driver Seat- Passenger Seat
- Manual Tilt/Telescoping Steering Column
- Fixed 50-50 Split-Bench Premium Cloth 3rd Row Seat Front, Manual Fold Into Floor and 2 Fixed Head Restraints
- Leather Steering Wheel- Front Cupholder- Rear Cupholder- Compass- Keypad
- Valet Function
- HVAC -inc: Underseat Ducts, Auxiliary Rear Heater and Headliner/Pillar Ducts
- Illuminated Locking Glove Box- Driver Foot Rest
- Interior Trim -inc: Metal-Look Instrument Panel Insert, Metal-Look Door Panel Insert, Metal-Look Console Insert and Chrome/Metal-Look Interior Accents
- Full Cloth Headliner- Cloth Door Trim Insert- Leather/Chrome Gear Shift Knob
- Day-Night Rearview Mirror
- Driver And Passenger Visor Vanity Mirrors w/Driver And Passenger Illumination
- Full Floor Console w/Covered Storage, Mini Overhead Console w/Storage and 4 12V DC Power Outlets
- Front And Rear Map Lights- Fade-To-Off Interior Lighting- Carpet Floor Trim
- Cargo Area Concealed Storage- Cargo Space Lights
- Driver / Passenger And Rear Door Bins- Delayed Accessory Power- Systems Monitor
- Outside Temp Gauge- Analog Display- Manual Adjustable Rear Head Restraints
- Front Center Armrest and Rear Center Armrest- 2 Seatback Storage Pockets
- Seats w/Premium Cloth Back Material
- Securilock Anti-Theft Ignition (pats) Engine Immobilizer- Perimeter Alarm
- 4 12V DC Power Outlets- Air Filtration

---

## Mechanical

- Engine: 3.5L Ti-VCT V6 (FFV) -inc: Flexible Fuel Vehicle (FFV) system is standard equipment for vehicles w/the 3.5L Ti-VCT V6 engine shipped to Federal Emissions States or Cross Border State dealers and is only available w/a Federal emissions system, (FFV system not available w/code 422 and requires code 936 or 423 if applicable for California Emissions State dealer destinations).Cross border states include AZ, DC, ID, NH, NV, OH, VA, WV Not standard equipment in CA Emissions States.
- Transmission: 6-Speed SelectShift Automatic
- 4-Wheel Disc Brakes w/4-Wheel ABS, Front And Rear Vented Discs, Brake Assist, Hill Descent Control and Hill Hold Control

- 3.65 Axle Ratio- GVWR: 6,160 lbs- Electronic Transfer Case
- Automatic Full-Time Four-Wheel Drive
- 72-Amp/Hr 650CCA Maintenance-Free Battery w/Run Down Protection
- 200 Amp Alternator- Towing Equipment -inc: Trailer Sway Control
- Gas-Pressurized Shock Absorbers- Front And Rear Anti-Roll Bars
- Electric Power-Assist Speed-Sensing Steering- 18.6 Gal. Fuel Tank
- Quasi-Dual Stainless Steel Exhaust w/Chrome Tailpipe Finisher- Auto Locking Hubs
- Strut Front Suspension w/Coil Springs- Multi-Link Rear Suspension w/Coil Springs

Winningham Chevrolet

Winningham Chevrolet

View this car on our website at [texaschevytrucks.com/6698546](https://texaschevytrucks.com/6698546)

Website: [texaschevytrucks.com](https://texaschevytrucks.com)

Phone: [9038432561](tel:9038432561)

Map: [701 S Wood St \(US 271\), Gilmer, TX 75644](#)

