

2020 Jeep Gladiator Rubicon 4X4 DUPONT KEVLAR,LIFTED,LED'S,FUEL WHLS

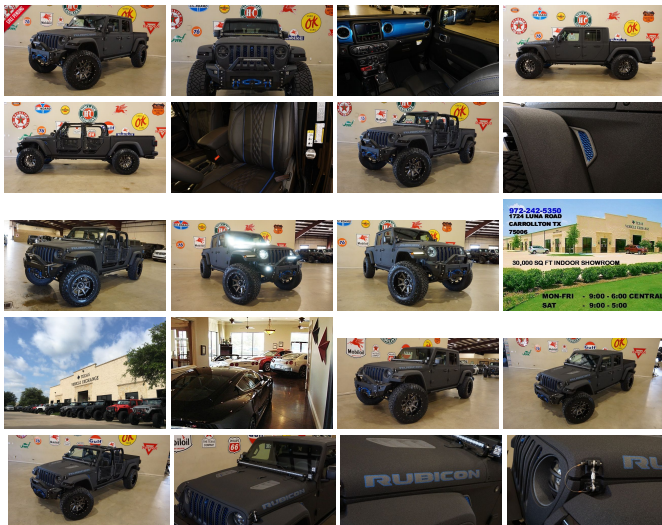
View this car on our website at tveauto.com/6698487/ebrochure



Our Price **\$88,900**

Specifications:

Year:	2020
VIN:	1C6JTBG9LL115610
Make:	Jeep
Stock:	115610
Model/Trim:	Gladiator Rubicon 4X4 DUPONT KEVLAR,LIFTED,LED'S,FUEL WHLS
Condition:	Pre-Owned
Body:	Pickup Truck
Exterior:	Black
Engine:	ENGINE: 3.6L V6 24V VVT UPG I W/ESS
Interior:	Black Leather
Transmission:	TRANSMISSION: 8-SPEED AUTOMATIC (850RE)
Mileage:	57
Drivetrain:	4 Wheel Drive
Economy:	City 16 / Highway 22



NATION WIDE FINANCING

SUBMIT CREDIT APP WWW.TVEAUTO.COM

OR CALL 972-242-5350

"RAPTOR BLACK EDITION"

CUSTOM BUILT **KEVLAR** 2020 JEEP
GLADIATOR RUBICON 4X4 WITH 24R
PACKAGE

UPGRADES INCLUDE:

UPGRADES INCLUDE:

- * RAPTOR BLACK KEVLAR COATING WITH BLUE ACCENTS
- * CUSTOM ALEA BLACK LEATHER WITH BLUE STITCHING
- * FACTORY REMOTE START
- * REMOTE PROXIMITY KEYLESS ENTRY
- * COLD WEATHER GROUP
- * LED LIGHTING GROUP
- * JEEP ACTIVE SAFETY GROUP
- * TRAILER TOW PACKAGE
- * FORWARD FACING TRAIL CAM
- * FACTORY 8.4 INCH TOUCH SCREEN NAVIGATION WITH HD AM/FM/SIRIUS STEREO & ALPINE PREMIUM AUDIO SYSTEM
- * FACTORY BACK-UP CAMERA
- * U-CONNECT
- * (4.10 AXLE RATIO)
- * 4 BODY ARMOR TRAIL DOORS & RECON MIRRORS
- * VPR 4X4 JL FRONT ULTIMA BUMPER WITH LED LIGHT BAR & 2 RIGID INDUSTRIES DUALY D2 LED LIGHTS
- * FRONT D-RINGS & ISOLATORS (BLUE)
- * SMITTYBILT NEW GEN II "X20" 10,000 LB WATERPROOF AND WIRELESS CONTROL WINCH WITH SYNTHETIC ROPE
- * FACTORY 55 PROLINK (BLACK)
- * FACTORY MESH GRILLE PAINTED BLUE
- * FACTORY LED HEADLIGHTS
- * RUGGED RIDGE BLACK HEADLIGHT GUARDS
- * MOPAR 10TH ANNIVERSARY RUBICON

POWER DOME HOOD

- * DRAKE OFF ROAD HOOD LATCHES
- * PRO COMP 3.5" SUSPENSION LIFT KIT WITH TERAFLEX FALCON SHOCKS
- * TERAFLEX FALCON STABILIZER KIT
- * SUSPENSION PARTS (PAINTED BLUE)
- * MOPAR AUXILIARY SWITCH BANK KIT

- * 50" LED LIGHT BAR AND 4 RIGID INDUSTRIES DUALY D2 LED PILLAR LIGHTS

- * AMP RESEARCH POWER RUNNING BOARDS WITH LED LIGHT KIT
- * ROLL UP TONNEAU COVER
- * SPRAY IN BEDLINER
- * FACTORY STEEL REAR BUMPER WITH REAR PARK DISTANCE SENSORS
- * MAGNAFLOW CAT-BACK BLACK EXHAUST SYSTEM
- * SUPERCHIPS FLASHCAL PROGRAMMER
- * 20" FUEL "RAMPAGE" 2-PIECE WHEELS
- * BRAND NEW NITTO RIDGE GRAPPLER 38X13.50R/20 TIRES

WE BUILD EVERY JEEP WITH PRIDE! DO NOT HESITATE TO CALL US WITH THIS JEEP BUILD. WE CAN MAKE CHANGES TO THIS JEEP BUILD OR CUSTOM BUILD ANY JEEP TO YOUR PREFERENCE. GIVE US A CALL @ 972-242-5350 OR STOP BY FOR A TEST DRIVE. 1724 LUNA RD IN CARROLLTON - 2 MILES NORTH OF 635.

Our Location :



2020 Jeep Gladiator Rubicon 4X4 DUPONT KEVLAR,LIFTED,LED'S,FUEL WHLS
Texas Vehicle Exchange - 972-242-5350 - View this car on our website at veauto.com/6698487/ebrochure

Installed Options

Interior

- 2 12V DC Power Outlets- 2 12V DC Power Outlets and 1 AC Power Outlet
- 2 Seatback Storage Pockets
- 4-Way Passenger Seat -inc: Manual Recline and Fore/Aft Movement
- 6-Way Driver Seat -inc: Manual Recline, Height Adjustment, Fore/Aft Movement and Manual Lumbar Support
- 60-40 Folding Split-Bench Front Facing Fold Forward Seatback Premium Cloth Rear Seat
- 97 mph Maximum Speed Calibration- Air Filtration- Analog Display- Compass
- Cruise Control w/Steering Wheel Controls- Day-Night Rearview Mirror
- Delayed Accessory Power
- Driver And Passenger Visor Vanity Mirrors w/Driver And Passenger Illumination
- Engine Immobilizer- Fade-To-Off Interior Lighting- Front And Rear Map Lights
- Front Center Armrest w/Storage
- Front Seats w/Cloth Back Material and Manual Driver Lumbar
- Full Carpet Floor Covering -inc: Carpet Front And Rear Floor Mats
- Full Floor Console w/Locking Storage, 2 12V DC Power Outlets and 1 AC Power Outlet
- Garage Door Transmitter
- Gauges -inc: Speedometer, Odometer, Voltmeter, Oil Pressure, Engine Coolant Temp, Tachometer, Engine Hour Meter, Trip Odometer and Trip Computer
- HVAC -inc: Console Ducts- Illuminated Front Cupholder- Illuminated Rear Cupholder
- Instrument Panel Bin, Dashboard Storage, Driver / Passenger And Rear Door Bins
- Interior Trim -inc: Colored Instrument Panel Insert, Metal-Look Door Panel Insert, Metal-Look Console Insert and Metal-Look Interior Accents
- Leather Steering Wheel- Locking Glove Box
- Manual Adjustable Front Head Restraints and Foldable Rear Head Restraints
- Manual Tilt/Telescoping Steering Column- Outside Temp Gauge- Perimeter Alarm
- Power 1st Row Windows w/Driver And Passenger 1-Touch Down
- Power Door Locks w/Autolock Feature- Power Rear Windows
- Premium Cloth Low-Back Bucket Seats- Proximity Key For Push Button Start Only
- Redundant Digital Speedometer

- Remote Keyless Entry w/Integrated Key Transmitter, Illuminated Entry and Panic Button
- Smart Device Integration- Systems Monitor- Trip Computer- Urethane Gear Shift Knob
- Voice Activated Dual Zone Front Automatic Air Conditioning

Exterior

- Tailgate Rear Cargo Access- Tailgate/Rear Door Lock Included w/Power Door Locks
- Tires: LT285/70R17C BSW A/T- Variable Intermittent Wipers
- Wheels: 17" x 7.5" Granite Crystal Aluminum- Steel Spare Wheel
- Removable Rear Window- Regular Box Style
- Manual Convertible Top w/Fixed Roll-Over Protection- Galvanized Steel/Aluminum Panels
- Fully Automatic Aero-Composite Halogen Daytime Running Headlamps w/Delay-Off
- Full-Size Spare Tire Stored Underbody w/Crankdown- Front Fog Lamps
- Falken Brand Tires- Deep Tinted Glass- Clearcoat Paint w/Badging
- Body-Color Grille w/Colored Accents- Black Wheel Well Trim and Black Fender Flares
- Black Side Windows Trim- Black Rear Bumper w/2 Tow Hooks
- Black Power Heated Side Mirrors w/Manual Folding- Black Front Bumper w/2 Tow Hooks
- Black Door Handles

Safety

- 2 12V DC Power Outlets- 2 12V DC Power Outlets and 1 AC Power Outlet
- 2 Seatback Storage Pockets
- 4-Way Passenger Seat -inc: Manual Recline and Fore/Aft Movement
- 6-Way Driver Seat -inc: Manual Recline, Height Adjustment, Fore/Aft Movement and Manual Lumbar Support
- 60-40 Folding Split-Bench Front Facing Fold Forward Seatback Premium Cloth Rear Seat
- 97 mph Maximum Speed Calibration- Air Filtration- Analog Display- Compass
- Cruise Control w/Steering Wheel Controls- Day-Night Rearview Mirror
- Delayed Accessory Power
- Driver And Passenger Visor Vanity Mirrors w/Driver And Passenger Illumination
- Engine Immobilizer- Fade-To-Off Interior Lighting- Front And Rear Map Lights
- Front Center Armrest w/Storage
- Front Seats w/Cloth Back Material and Manual Driver Lumbar
- Full Carpet Floor Covering -inc: Carpet Front And Rear Floor Mats
- Full Floor Console w/Locking Storage, 2 12V DC Power Outlets and 1 AC Power Outlet
- Garage Door Transmitter
- Gauges -inc: Speedometer, Odometer, Voltmeter, Oil Pressure, Engine Coolant Temp, Tachometer, Engine Hour Meter, Trip Odometer and Trip Computer
- HVAC -inc: Console Ducts- Illuminated Front Cupholder- Illuminated Rear Cupholder
- Instrument Panel Bin, Dashboard Storage, Driver / Passenger And Rear Door Bins
- Interior Trim -inc: Colored Instrument Panel Insert, Metal-Look Door Panel Insert, Metal-Look Console Insert and Metal-Look Interior Accents
- Leather Steering Wheel- Locking Glove Box
- Manual Adjustable Front Head Restraints and Foldable Rear Head Restraints
- Manual Tilt/Telescoping Steering Column- Outside Temp Gauge- Perimeter Alarm
- Power 1st Row Windows w/Driver And Passenger 1-Touch Down
- Power Door Locks w/Autolock Feature- Power Rear Windows
- Premium Cloth Low-Back Bucket Seats- Proximity Key For Push Button Start Only
- Redundant Digital Speedometer
- Remote Keyless Entry w/Integrated Key Transmitter, Illuminated Entry and Panic Button
- Smart Device Integration- Systems Monitor- Trip Computer- Urethane Gear Shift Knob
- Voice Activated Dual Zone Front Automatic Air Conditioning

Mechanical

- 1200lbs. Maximum Payload- 22 Gal. Fuel Tank- 220 Amp Alternator
 - 4-Wheel Disc Brakes w/4-Wheel ABS, Front And Rear Vented Discs, Brake Assist and Hill Hold Control
 - 4.10 Rear Axle Ratio- 5 Skid Plates- 50 State Emissions
 - 650CCA Maintenance-Free Battery w/Run Down Protection- Auto Locking Hubs
 - Brake Actuated Limited Slip Differential
 - Class II Towing Equipment -inc: Hitch and Trailer Sway Control
 - Driver Selectable Front Locking Differential- Driver Selectable Rear Locking Differential
 - Electro-Hydraulic Power Assist Steering- Engine Auto Stop-Start Feature
 - Engine Oil Cooler- Engine: 3.6L V6 24V VVT UPG I w/ESS
 - Fox Brand Name Shock Absorbers
 - Front Active w/Driver Control Anti-Roll Bar and Rear Anti-Roll Bar- GVWR: TBA
 - Leading Link Front Suspension w/Coil Springs- Manual Transfer Case
 - Part-Time Four-Wheel Drive- Performance Suspension- Single Stainless Steel Exhaust
 - Trailer Wiring Harness- Trailing Arm Rear Suspension w/Coil Springs
 - Transmission: 6-Speed Manual
-

Option Packages

Factory Installed Packages

ENGINE: 3.6L V6 24V VVT UPG I W/ESS

TRANSMISSION: 8-SPEED AUTOMATIC (850RE)

-inc: Tip Start, Transmission Skid Plate, Selec-Speed Control \$2,000

8.4" RADIO & PREMIUM AUDIO GROUP

-inc: Emergency/Assistance Call, SiriusXM Traffic Plus, Alpine Premium Audio System, HD Radio, Radio: Uconnect 4C Nav w/8.4" Display, Rear View Auto Dim Mirror, For Details, Visit DriveUconnect.com, 1-Year SiriusXM Guardian Trial, 5-Year SiriusXM Travel Link Service, 5-Year SiriusXM Traffic Service, SiriusXM Travel Link \$1,595

AUXILIARY SWITCH GROUP

-inc: 700 Amp Maintenance Free Battery, 240 Amp Alternator, Auxiliary Switches \$295

BLACK 3-PIECE HARD TOP

-inc: Freedom Panel Storage Bag, Rear Window Defroster, Rear Sliding Window, No Soft Top \$1,195

COLD WEATHER GROUP

-inc: Heated Steering Wheel, Heated Front Seats \$995

INTEGRATED OFF-ROAD CAMERA

\$595

LED LIGHTING GROUP

-inc: Daytime Running Lamps, LED Accents, LED Park Turn Lamps, Front LED Fog Lamps, LED Reflector Headlamps, LED Taillamps \$995

REMOTE PROXIMITY KEYLESS ENTRY

\$495

ROLL-UP TONNEAU COVER

\$495

SAFETY GROUP

-inc: ParkSense Rear Park Assist System, Blind Spot & Cross Path Detection \$995

SPRAY IN BEDLINER

\$495

TRAILER TOW PACKAGE

-inc: Trailer Hitch Zoom, Class IV Hitch Receiver, Heavy Duty Engine Cooling, 240 Amp Alternator \$250

QUICK ORDER PACKAGE 24R

OPTION PACKAGES

-inc: Engine: 3.6L V6 24V VVT
UPG I w/ESS, Transmission: 8-
Speed Automatic (850RE)

Option Packages Total
\$10,400

Texas Vehicle Exchange

tveauto.com

972-242-5350

1724 Luna Road

Carrollton, TX 75006

© 2023 AutoRevo - All rights reserved. - Powered by AutoRevo