



2004 Porsche 911 Carrera

Our Price \$28,998

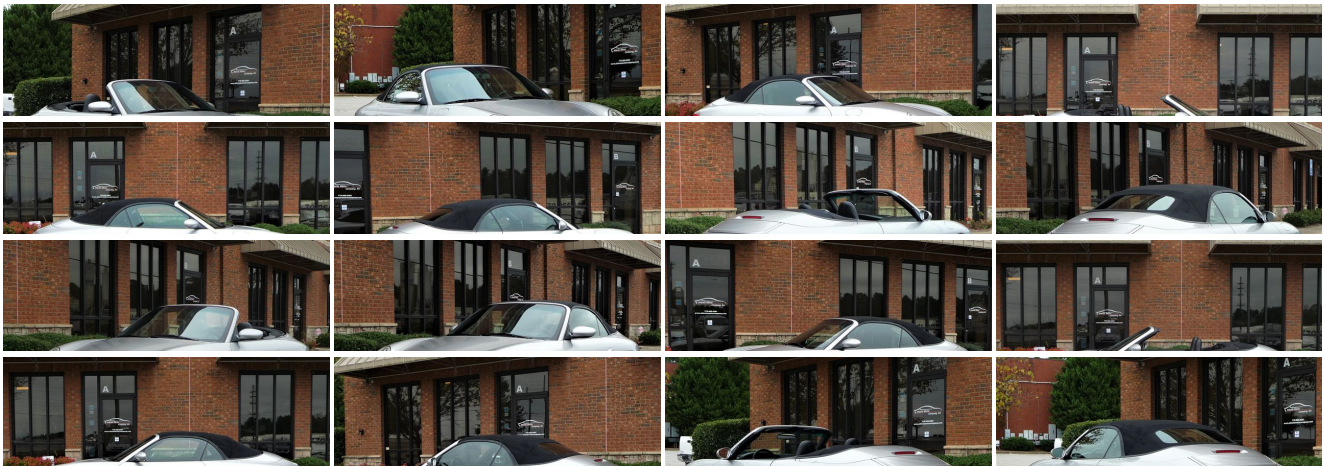
View this vehicle on our website at atlantamotorcompany.com



[\(770\) 965-0281](tel:7709650281)

4606 Elk Ridge Ct., Suite A, Flowery Branch, Georgia 30542

Photos
Details
Contact





Specifications:

Year:	2004
VIN:	WP0CA29954S652775
Make:	Porsche
Stock:	T2437
Model/Trim:	911 Carrera
Condition:	Pre-Owned
Body:	Convertible
Exterior:	Arctic Silver Metallic
Engine:	3.6L (219) DOHC SMPI aluminum water-cooled horizontally-opposed 24-valve 6-cyl engine
Interior:	Black Leather
Transmission:	5-SPEED TIPTRONIC AUTOMATIC TRANSMISSION
Mileage:	38,207
Drivetrain:	Rear Wheel Drive
Economy:	City 18 / Highway 26

Vehicle Description

SHOWN BY APPOINTMENT ONLY

Installed Options

Interior

- AM/FM stereo w/CD player
- Front bucket seats-inc: length/height adjustments, pwr backrest adjustment
- Illuminated visor vanity mirrors- 2 + 2 Seating- Adjustable steering column
- Anti-theft system-inc: immobilizer, interior sensor, remote control
- Automatic climate control w/carbon filter- CD storage shelf
- Central locking w/remote control- Cruise control- Folding rear seat backrests
- Instrumentation-inc: analog & digital speedometer, analog tachometer, digital odometer/trip odometer
- Integrated dual cup holders- Leather-wrapped 3-spoke steering wheel w/Porsche crest
- Leather-wrapped shift knob & handbrake lever
- Lockable storage compartment behind brake lever- Locking glove box
- Multi-function trip computer- Pwr windows-inc: one-touch up/down, anti-jam feature
- Rear window defroster- Remote hood/trunk releases- Standard leather interior
- Steering wheel-mounted gear selectors

Exterior

- Light-weight body-color removable hardtop- Speed-dependent extendable rear spoiler
- Heated windshield washer nozzles- Integrated front fog lights
- Pwr operated double-lined soft top- Pwr/heated color-keyed exterior mirrors
- Rear high-density fog light

Safety

- AM/FM stereo w/CD player
- Front bucket seats-inc: length/height adjustments, pwr backrest adjustment
- Illuminated visor vanity mirrors- 2 + 2 Seating- Adjustable steering column
- Anti-theft system-inc: immobilizer, interior sensor, remote control
- Automatic climate control w/carbon filter- CD storage shelf
- Central locking w/remote control- Cruise control- Folding rear seat backrests
- Instrumentation-inc: analog & digital speedometer, analog tachometer, digital odometer/trip odometer
- Integrated dual cup holders- Leather-wrapped 3-spoke steering wheel w/Porsche crest
- Leather-wrapped shift knob & handbrake lever
- Lockable storage compartment behind brake lever- Locking glove box
- Multi-function trip computer- Pwr windows-inc: one-touch up/down, anti-jam feature
- Rear window defroster- Remote hood/trunk releases- Standard leather interior
- Steering wheel-mounted gear selectors

Mechanical

- 17" x 7" front/17" x 9" rear carrera II light aluminum alloy wheels-inc: wheel center caps w/monochrome Porsche crest
- 16.9 gallon fuel tank- 205/50ZR17 performance SBR front tires
- 255/40ZR17 performance SBR rear tires
- 3.6L (219) DOHC SMPI aluminum water-cooled horizontally-opposed 24-valve 6-cyl engine
- 4-piston light alloy brake calipers- 5-speed tiptronic automatic transmission
- Anti-lock braking system (ABS)- Double inertia flywheel
- Force-sensitive pwr rack & pinion steering- Front/rear stabilizer bars
- Independent multi-link rear suspension w/coil springs
- MacPherson strut front suspension w/aluminum suspension components
- Motronic ME 7.8 electronic engine management system-inc: electronic throttle
- Pwr 4-wheel 12.5" front/11.8" rear vented disc brakes w/cross drilled rotors
- Rear wheel drive- VarioCam Plus variable valve timing system

Option Packages

Factory Installed Packages

5-SPEED TIPTRONIC AUTOMATIC TRANSMISSION	
-inc: steering wheel-mounted gear selectors	\$3,420
BLACK FLOOR MAT W/PORSCHE LETTERING	\$115
PWR SEAT PKG	
-inc: driver memory, full electrical adjustment	\$1,550
HI-FI SOUND	
-inc: 10 speakers w/2 bass boxes, 6 channel amplifier w/4x40 and 2x70 watts	\$830
18" LIGHT ALLOY CARRERA WHEELS	\$1,435
WHEEL CAPS W/COLORED PORSCHE CREST	\$175
PORSCHE WINDSTOP	\$250
XENON HEADLAMP PKG	
-inc: dynamic leveling, headlamp washers	\$1,090
METALLIC PAINT	\$825
STANDARD LEATHER SEATS	
Option Packages Total	\$9,690

Atlanta Motor Company, Inc

Atlanta Motor Company, Inc

View this car on our website at atlantamotorcompany.com/6697751

Website: atlantamotorcompany.com

Phone: (770) 965-0281

Map: 4606 Elk Ridge Ct., Suite A, Flowery Branch, Georgia 30542

